

# NCA-5220

**1U 19" Rackmount Network Appliance Built with Intel® Xeon® E or Core i3 or Pentium or Celeron Processor (Codenamed Coffee Lake)**



Images are for reference only. See ordering information for SKU details.

## ■ Features

- Intel® Xeon® E or Core i3 or Pentium or Celeron Processor (Codenamed Coffee Lake)
- 2x Gbe RJ45 for Dual MGMT Intel® i210, 8x Gbe RJ45 Intel® i210(SKU A), 4x Gbe RJ45 Intel® i350-AM4 (SKU A), 4x SFP LAN Ports (By Project), Max. 5 Pairs of Gen3 Bypass (By SKU)
- DDR4 2666MHz ECC (By CPU) or Non-ECC UDIMM, Max. 128GB
- 2x NIC Module Slots, 1x RJ45 Console, 2x USB 3.0, 4x Keypads
- 2x 2.5" HDD/SSD Bays, 1x M.2 2242, B+M Key (Optional)
- 2x PCI-E\*4 FH/HL (Optional), 2x System Fans
- 300W 1+1 ATX Redundant PSUs

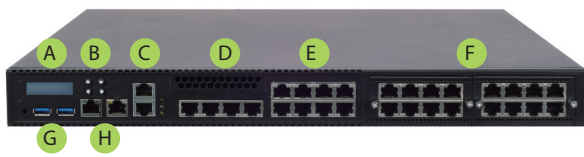
## ■ Specifications

Platform	
Form Factor	1U 19" Rackmount
Processor Options	Intel® Xeon® E or Core i3 or Pentium or Celeron Processor (Coffee Lake) (Up to 6 Cores)
CPU Socket	1 x LGA1151
Chipset	Intel® C246
Security Acceleration	-
BIOS	AMI SPI Flash BIOS
System Memory	
Technology	DDR4 2666 MHz ECC (By CPU) or Non-ECC UDIMM
Max. Capacity	128GB (32GB per DIMM)
Socket	4 x 288-pin DIMM
Networking	
Ethernet Ports	2x Gbe RJ45 for Dual MGMT Intel® i210 8x Gbe RJ45 Intel® i210(SKU A) 4x Gbe RJ45 Intel® i350-AM4 (SKU A) 4x SFP LAN Ports (By Project)
Bypass	Up to 5 Pairs of Gen3 Bypass (By SKU)
NIC Module Slot	2
LOM	
IO Interface	1 x RJ45
OPMA Slot	Yes
I/O Interface	
Reset Button	1
LED	Power/Status/Storage
Power Button	1 x ATX Power Switch
Console	1 x RJ45
USB	2 x USB 3.0
LCD Module	4 x Keypads, 16x2 Character LCD
Display	From OPMA Slot (Optional)
Power Input	AC Power Inlet on PSU

Storage	
HDD/SSD Support	2 x 2.5" Bays
Onboard Slots	1 x M.2 2242, B+M Key (Optional)
Expansion	
PCIe	2 x PCIe*4 FH/HL (Optional)
mini-PCIe	N/A
Miscellaneous	
Watchdog	Yes
Internal RTC with Li Battery	Yes
TPM	Yes (Optional)
Cooling	
Processor	Passive CPU Heatsink
System	2 x Cooling Fans with Smart Fan
Environmental Parameters	
Temperature	0~40°C Operating -20~70°C Non-Operating
Humidity (RH)	5~90% Operating 5~95% Non-Operating
System Dimensions	
(WxDxH)	438mm x 500mm x 44mm
Weight	7.1kg
Package Dimensions	
(WxDxH)	739mm x 582mm x 215mm
Weight	13kg
Power	
Type / Watts	300W 1+1 ATX Redundant PSUs
Input	AC 90V~264V @47~63Hz
Certification	
Approvals and Compliance	RoHS, CE/FCC Class A, UL

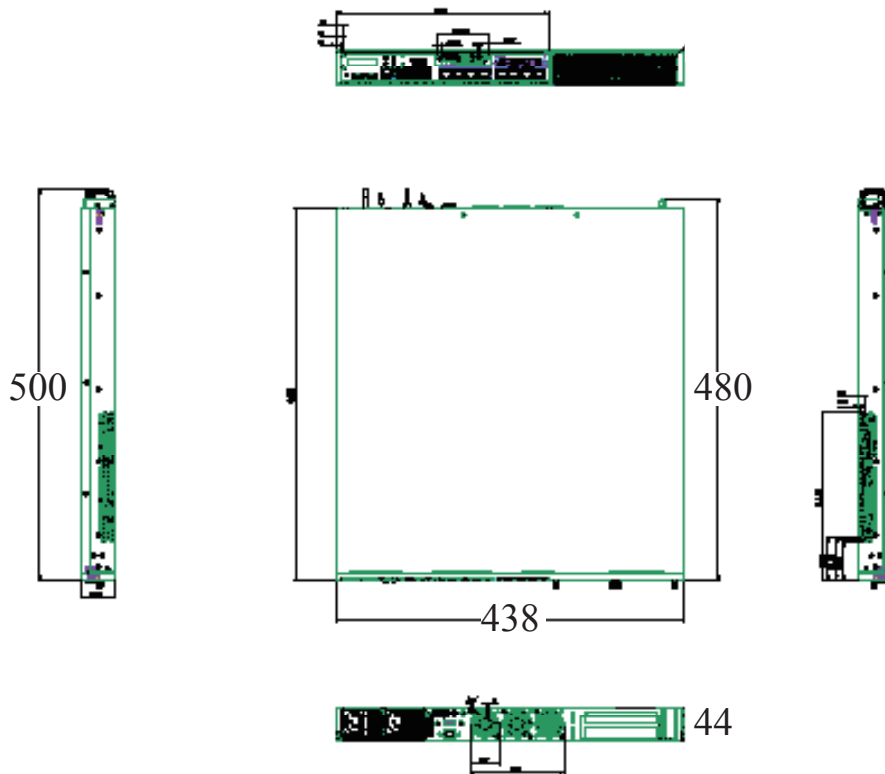
## Product I/O View

Images are for reference only. See ordering information for SKU details.



- |  |   |                           |                             |
|--|---|---------------------------|-----------------------------|
| <b>A</b> Display                         | <b>E</b> 8x RJ45 Intel® i210 (SKU A)            | <b>I</b> Optional PCI-E*4 | <b>M</b> PSUs               |
| <b>B</b> Keypads                         | <b>F</b> NIC Module Slots                       | <b>J</b> Cooling Fans     | <b>N</b> USB 3.0 (Optional) |
| <b>C</b> 2x RJ45 (Dual MGMT)             | <b>G</b> USB 3.0                                | <b>K</b> COM (Optional)   |                             |
| <b>D</b> 4x RJ45 Intel® i350-AM4 (SKU A) | <b>H</b> Console & LOM via IPMI Card (Optional) | <b>L</b> Power Switch     |                             |

## Dimensions (WxDxH): 438 x 500 x 44 mm



## Ordering Information

NCA-5220A

Intel Xeon E or Core i3 or Pentium or Celeron (up to 6 cores), 12Gbe RJ45, with 5 Pairs of Bypass, 2x RJ45 MGT, 2x NIC Module Slots, LCM, Redundant PSUs

V1-2020.07.29

# Lanner

© Lanner Electronics Inc. All rights reserved.  
All product specifications are subject to change without notice.  
[contact@lannerinc.com](mailto:contact@lannerinc.com) | [www.lannerinc.com](http://www.lannerinc.com)