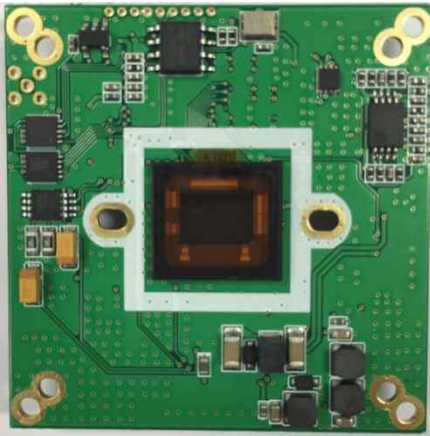


## AH243TS

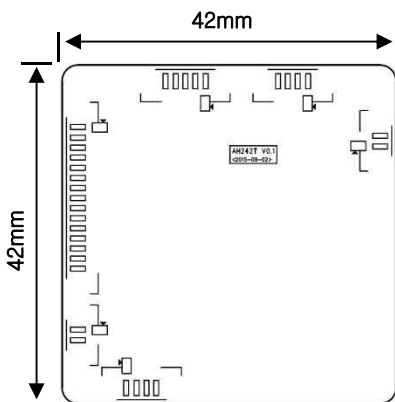
2.1Mega pixel TVI Camera



### Features

- 1/3" SONY CMOS Sensor
- HD-TVI Resolution : 1080p 30fps
- WDR (Wide Dynamic Range)
- DNR ( Digital Noise Reduction: 2D + 3D)
- Privacy Mask Function
- Intelligent Motion Detection
- Defog : Defogging foggy video image
- RS-485 OPTION
- EX-SDI 1.0 / 2.0
- Dimension : 42mm x 42mm
- 2MOTOR OPTION

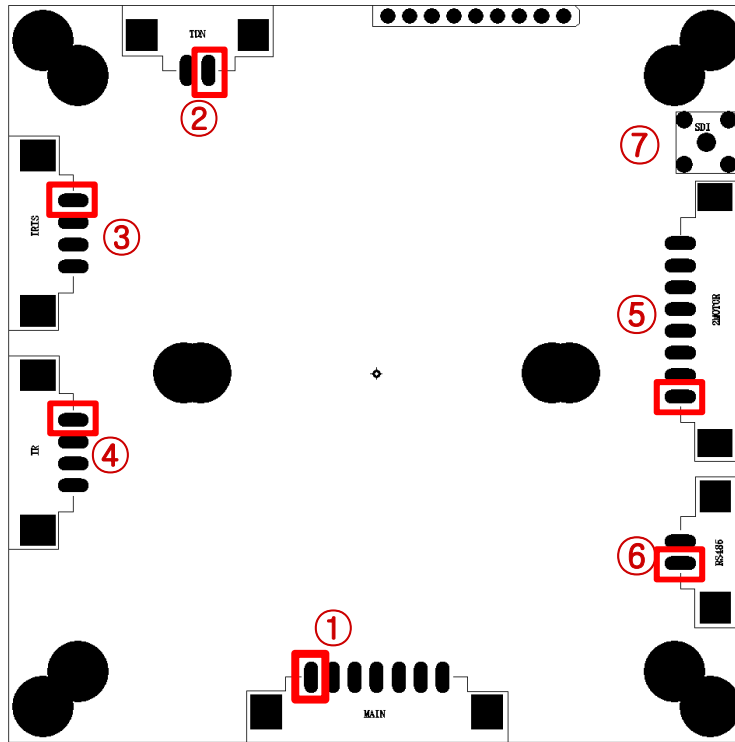
### Dimensions



### Specifications

AH243TS	
Image Device	1/3" 2.1Mega pixel SONY CMOS (Progressive)
Resolution	Digital : 1920 X 1080p , 1280 X 720p Analog : 700TVL
Total Pixels	2010(H) X 1108(V) = 2,227,080(pixel)
Effective Pixels	1944(H) X 1092(V) = 2,122,848(pixel)
Shutter Speed	Auto / Manual ( 1/30(1/25) ~ 1/60000 ) / FLICKER
Min. illumination	Color : 1.0 Lux / BW : 0.5 Lux
	Color DSS: 0.002 Lux / BW DSS : 0.001 Lux
S/N Ratio	More Than 50dB (AGC off)
HDTVI - ISP	EN-771T
Fix Lens	Normal / Deblur
DC IRIS	Indoor / Outdoor / Deblur
SENSE UP	x2 / x4 / x8 / x16 / x32
DAY & NIGHT	Auto / Day / Night / Ext / Color
SMART IR	Off / On
WHITE BALANCE	Auto / Auto Ext / Preset / Manual
MIRROR	Off / H / V / H&V
E.ZOOM	x1 ~ x8
DNR	Off / Low / Middle / High
PRIVACY	Off / On (16 points)
MOTION	Off / On (16 points)
SHADING	0 ~ 100%
DEFOG	Off / On
WDR / BLC / HLC	Off / WDR(Low / Middle / High) / BLC / HLC
COMMUNICATION	ID(1 ~ 255)
	BAUDRATE (2400/ 4800/ 9600/ 19200/ 38400/ 57600/ 115200)
SYSTEM	NTSC / PAL
HD-TVI	1080P / 720P ( 25 / 30fps )
Operating Temp./Hum	-10℃ ~ +50℃ / Max 90%RH
Storage Temp./Hum	-20℃ ~ + 60℃ / Max 90%RH
Video Output	Analog : NTSC / PAL(without WDR) , TVI,AHD,CVI,CVBS
Power Input	DC7.5V ~ 12V
Power Consumption	Max 200mA
Size	42 x 42mm

## Connector Pin map



Connector	Pin number	Pin name	Description
①	1	GND	Board Ground
	2	12V	DC 12V input
	3	VBS	Composite Video Output
	4	GND	Board Ground
	5	E-V	Extra Composite Video Output
	6	AD/KEY	AD/KEY
	7	MD	Motion Detection
②	1	TDN MA +	DRIVE1
	2	TDN MA -	DRIVE2
③	1	DMP+	DAMP+
	2	DMP-	DAMP-
	3	DRV+	DRIVE+
④	4	GND	Board Ground
	1	12V	DC 12V Output
	2	GND	Board Ground
	3	IR LED	IR LED Output OR CUSTOM D&N(GPIO)
⑤	4	CDS	Day & Night Input
	1	F A-	FOCUS A-
	2	F A+	FOCUS A+
	3	Z A-	ZOOM A-
	4	Z A+	ZOOM A+
	5	Z B+	ZOOM B+
	6	Z B-	ZOOM B-
	7	F B-	FOCUS B-
8	F B+	FOCUS B+	
⑥	1	485-RX	RS-485
	2	485-TX	
⑦	1	HD-SDI	MMCX

## Address

Rm.915, Keumkang Hightech Valley, 177, Sagimakgol-ro Jungwon-ku, Seongnam-si, Gyeonggi-do, Korea