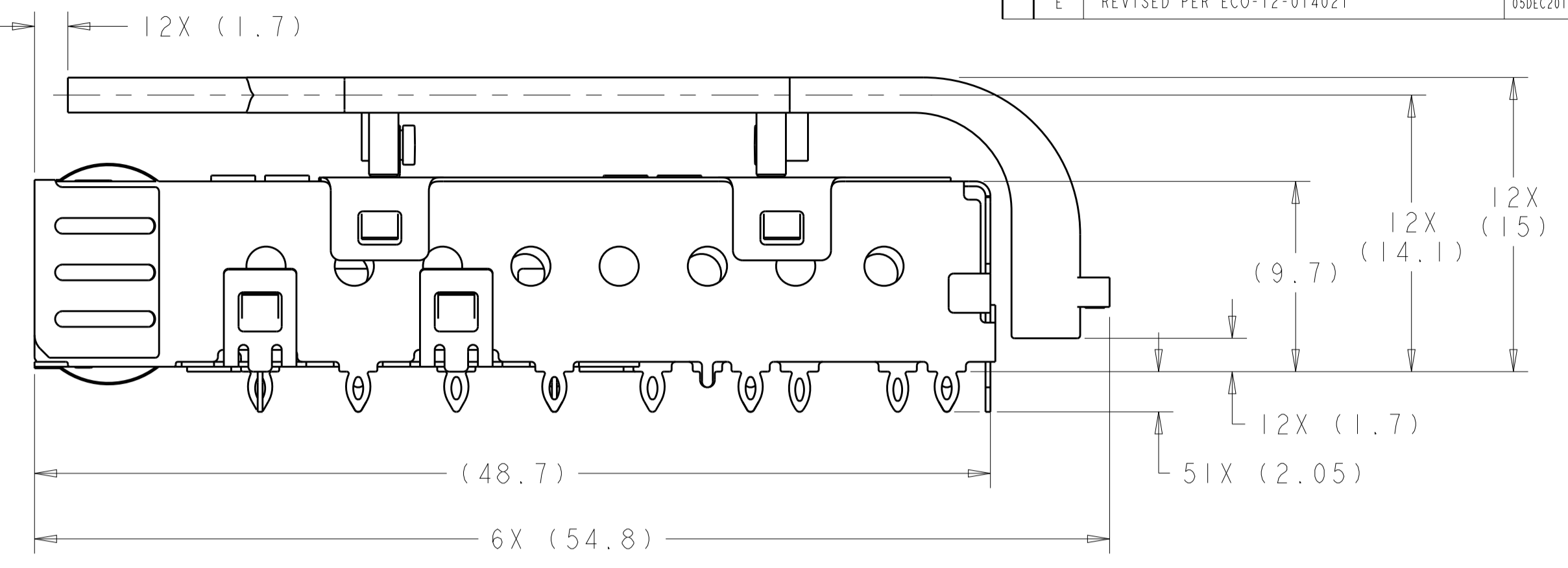
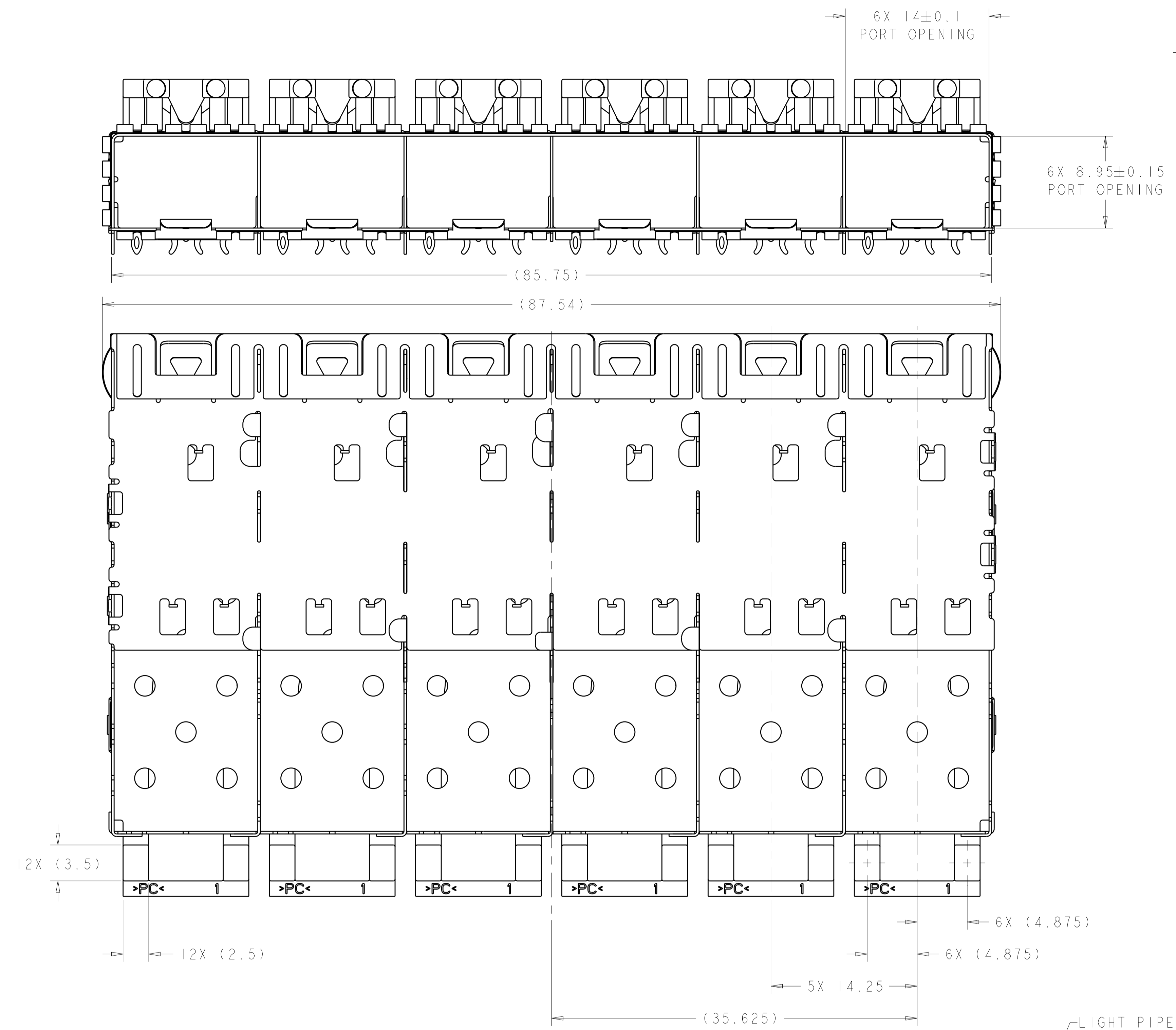
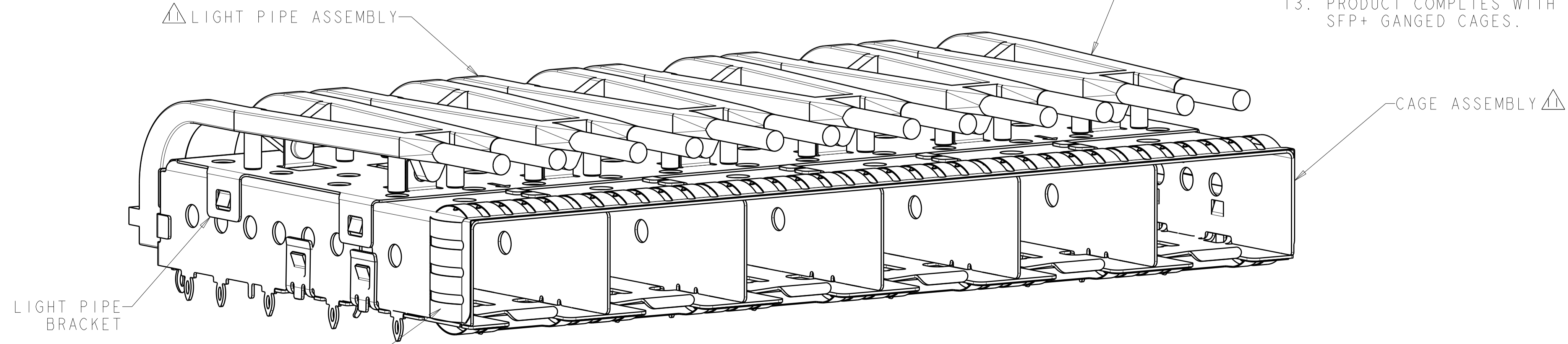


| LOC |     | DIST                      |           | REVISIONS |      |  |  |
|-----|-----|---------------------------|-----------|-----------|------|--|--|
| P   | LTN | DESCRIPTION               | DATE      | DWN       | APVD |  |  |
| B   |     | REVISED PER ECO-09-022874 | 20OCT2009 | CR        | MS   |  |  |
| C   |     | REVISED PER ECO-10-004036 | 01MAR2010 | CJV       | MRS  |  |  |
| D   |     | REVISED PER ECO-11-019224 | 10JAN2012 | TX        | AC   |  |  |
| E   |     | REVISED PER ECO-12-014021 | 05DEC2012 | TD        | AC   |  |  |



- 1. MATERIAL:  
 CAGE ASSEMBLY: 0.25mm THICK NICKEL SILVER ALLOY.  
 LIGHT PIPE CLIP: STAINLESS STEEL  
 LIGHT PIPE: POLYCARBONATE, CLEAR
- 2. FINISH:  
 SPRINGS: MINIMUM OF 0.8um TIN PLATE OVER A MINIMUM OF 0.8um NICKEL UNDERPLATE.  
 NON-PLATED EDGES PERMISSIBLE.
- 3. MATES WITH SFP MSA COMPLIANT TRANSCEIVERS.
- 4. PADS AND VIAS CHASSIS GROUND.
- 5. INTERPRETATION OF DATUM REFERENCE FRAME IN ACCORDANCE WITH SECT 4.4.1.1 OF ASME Y14.5M-1994.
- 6. MINIMUM PCB BOARD THICKNESS:  
 SINGLE SIDED = 1.50  
 DOUBLE SIDED = 2.25
- 7. HOLE PATTERN REPEATS FOR EACH PORT. SPACING BETWEEN PORTS IS 14.25mm.
- 8. DATUM AND BASIC DIMENSION ESTABLISHED BY CUSTOMER.
- 9. REFERENCE APPLICATION SPEC. 114-13120, HOLE A, FOR RECOMMENDED DRILL HOLE DIAMETER AND PLATING THICKNESS.
- 10. REFERENCE APPLICATION SPEC. 114-13120, HOLE B, FOR RECOMMENDED DRILL HOLE DIAMETER AND PLATING THICKNESS.
- 11. LIGHT PIPE ASSEMBLY SHIPPED UNASSEMBLED TO CAGE ASSEMBLY. CAGE ASSEMBLY TO BE PRESSED INTO THE PCB PRIOR TO ATTACHING THE LIGHT PIPE ASSEMBLY TO THE CAGE.
- 12. CERTAIN MATING TRANSCEIVERS MAY REQUIRE ADDITIONAL PCB THICKNESS THAT WOULD NEED TO BE DETERMINED BY THE CUSTOMER.
- 13. PRODUCT COMPLIES WITH SPECIFICATION SFF-8433 IMPROVED PLUGGABLE FORM FACTOR FOR SFP+ GANGED CAGES.



2007250-1  
 FINISHED ASSEMBLY  
 SCALE 4:1

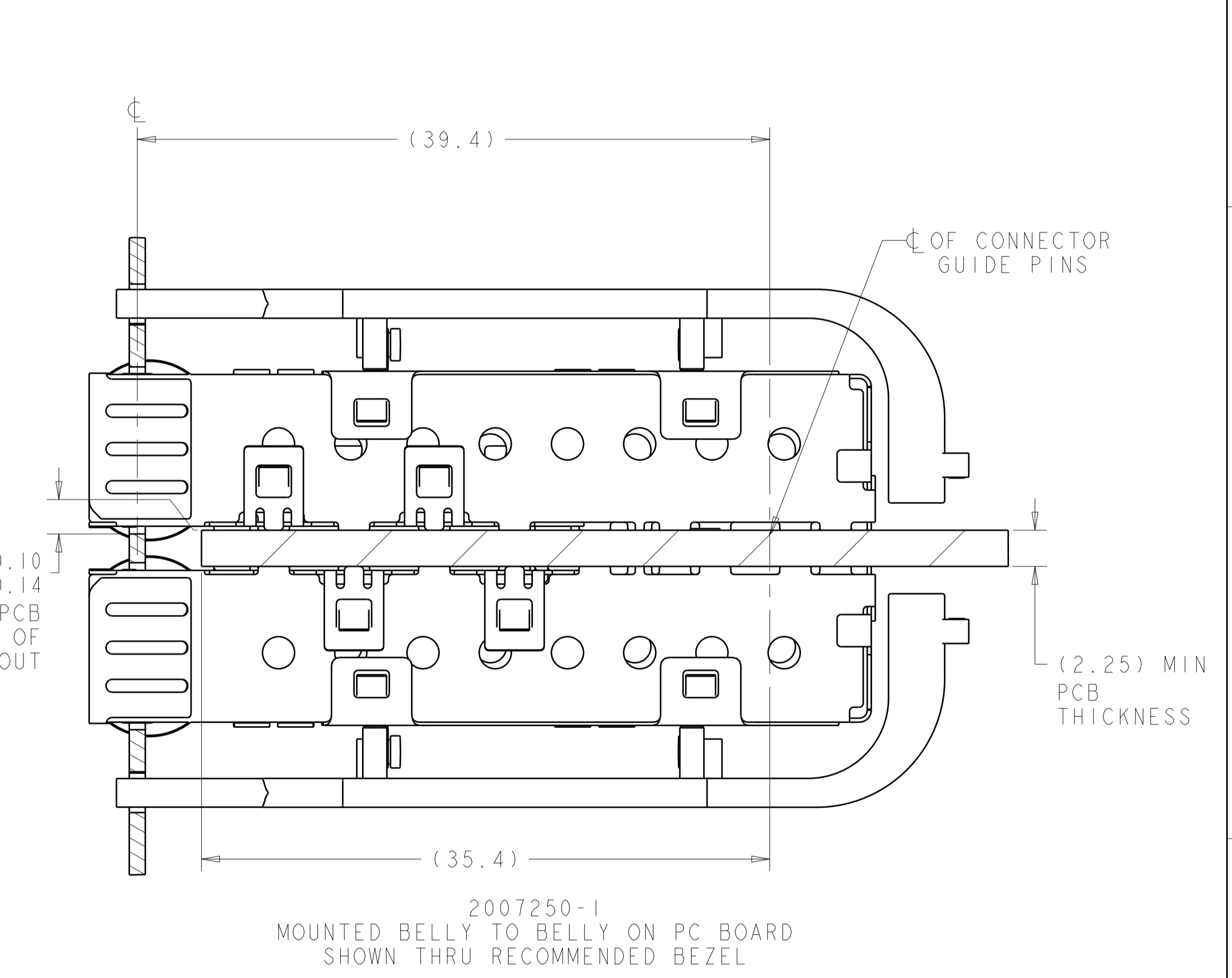
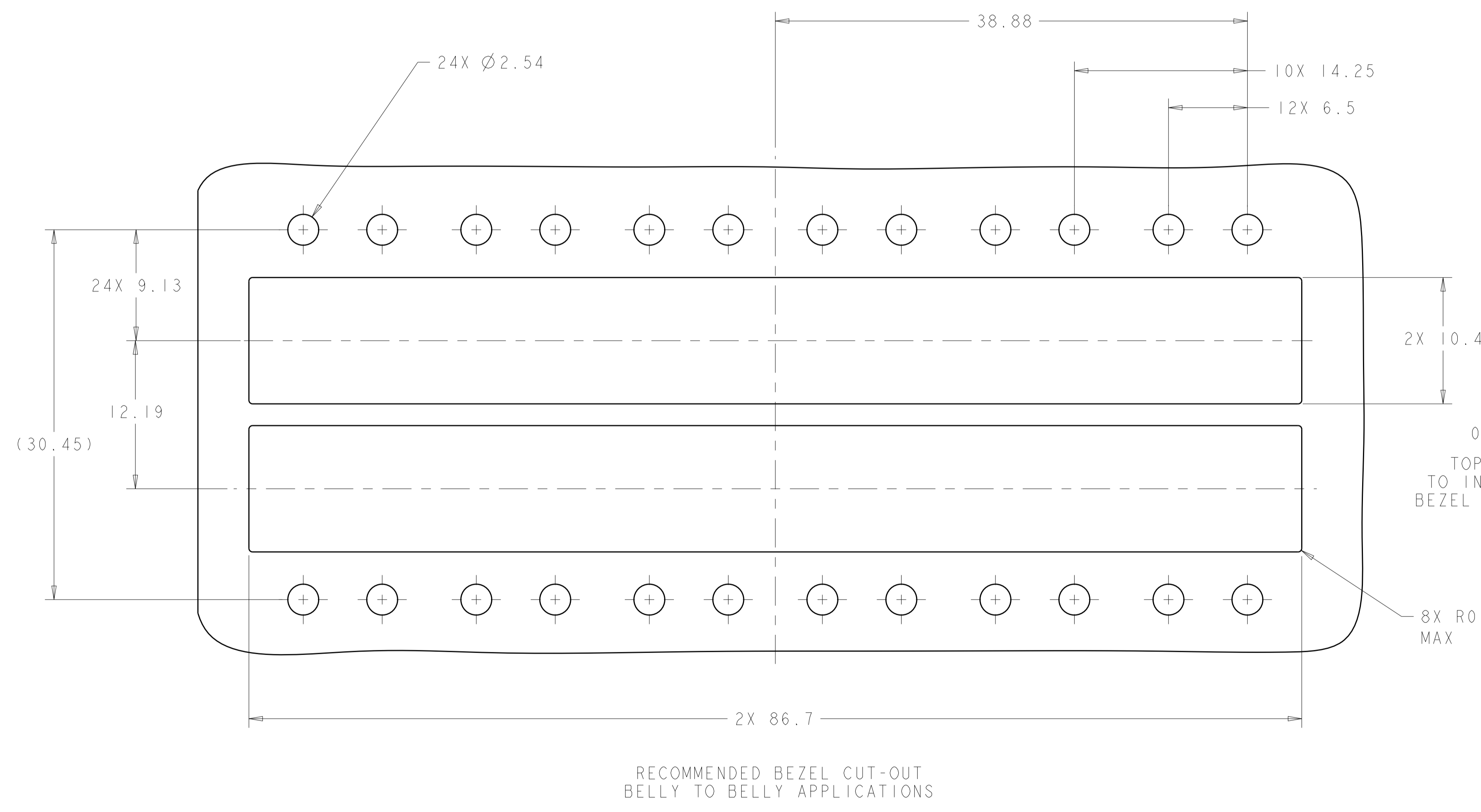
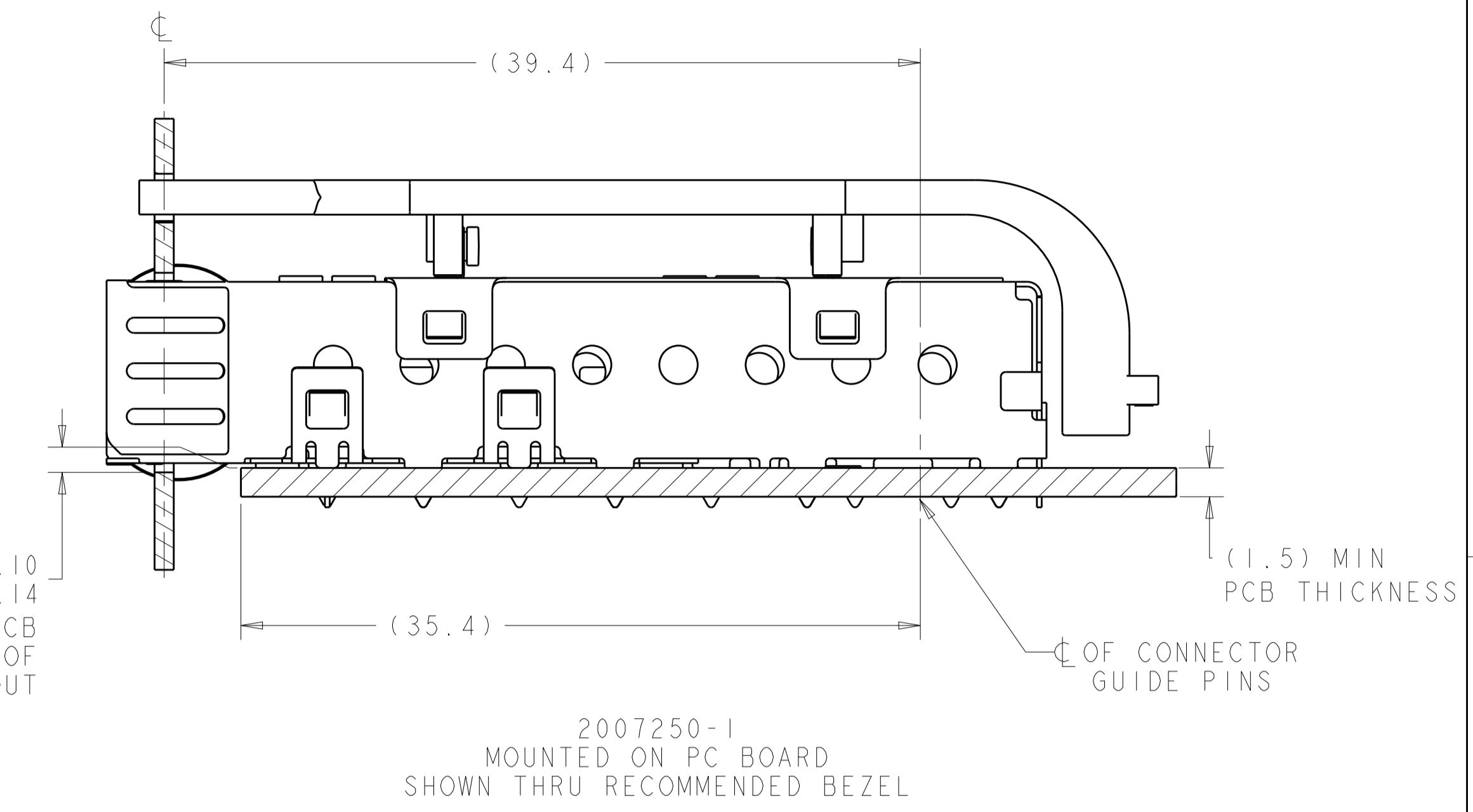
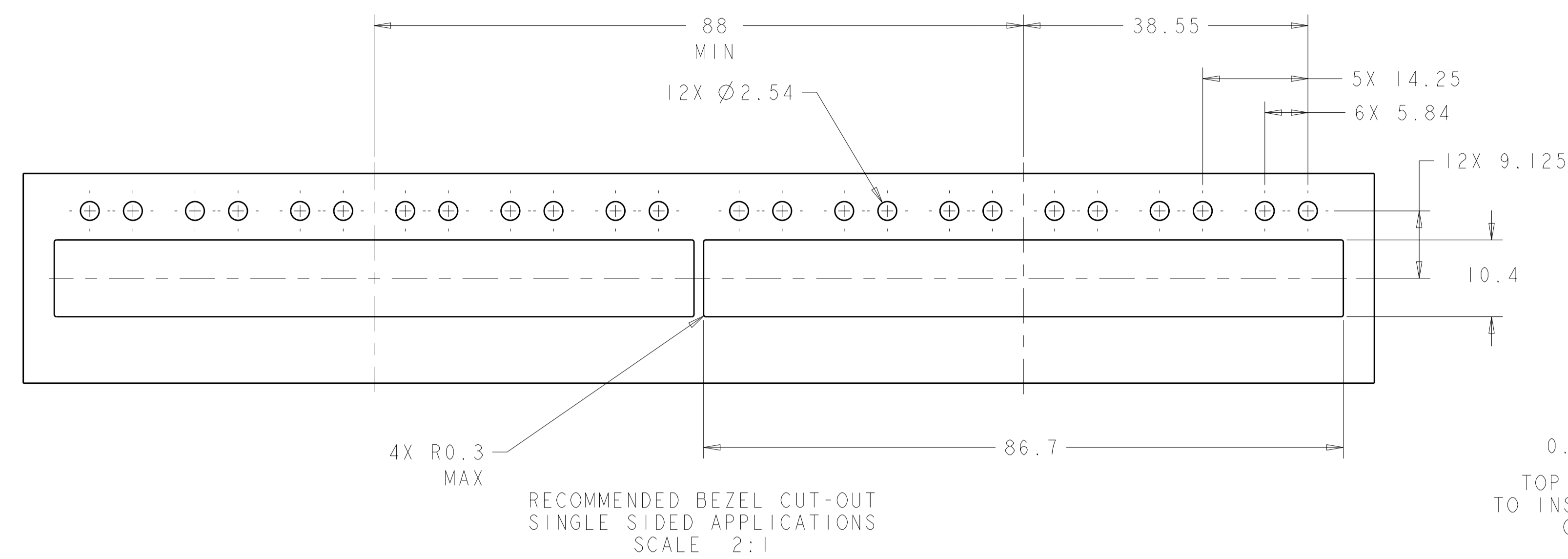
2007250-1  
 PART NUMBER

|  |  |  |               |  |  |
|--|--|--|---------------|--|--|
| THIS DRAWING IS A CONTROLLED DOCUMENT.   |  | DWN                                    | Z. M. BEAM    | 17JUL2007  | TE Connectivity<br>NAME<br>SFP+ 1X6 CAGE ASSEMBLY<br>PRESS FIT, EXTERNAL EMI SPRINGS<br>WITH LIGHT PIPES |
| DIMENSIONS:  |  | CHK                                    | M. R. SCHMITT | 17JUL2007  |  |
| mm   |  | APVD                                   | R. H. WERTZ   | 17JUL2007  |  |
| 0 PLC ±0.1<br>1 PLC ±0.1<br>2 PLC ±0.1<br>3 PLC ±0.1<br>4 PLC ±0.1<br>ANGLES ±1° |  | TOLERANCES UNLESS OTHERWISE SPECIFIED: |               | PRODUCT SPEC<br>108-2364<br>APPLICATION SPEC<br>114-13120<br>WEIGHT<br>- |  |
| MATERIAL   |  | Customer Drawing                       |               | SCALE  | 4:1  |
| FINISH   |  | Customer Drawing                       |               | SHEET  | 1 OF 4   |
| Customer Drawing   |  | Customer Drawing                       |               | REV  | E  |

| LOC | DIST | REV | DATE | BY | APPD |
|-----|------|-----|------|----|------|
| GP  | 00   |     |      |    |      |

| REVISIONS |             | DATE | BY | APPD |
|-----------|-------------|------|----|------|
| 1         | SEE SHEET 1 |      |    |      |



|  |  |  |                                       |
|--|--|--|---------------------------------------|
| THIS DRAWING IS A CONTROLLED DOCUMENT.                             |  | OWN: Z.M.BEAM 17JUL2007  | TE Connectivity                       |
| DIMENSIONS: mm   |  | CHK: M.R.SCHMITT 17JUL2007   |                                       |
| TOLERANCES UNLESS OTHERWISE SPECIFIED:                             |  | APPD: B.H.WERTZ 17JUL2007  |                                       |
| 0 PLC ±0.1<br>2 PLC ±0.1<br>3 PLC ±0.1<br>4 PLC ±0.1<br>ANGLES ±1° |  | NAME: SFP+ 1X6 CAGE ASSEMBLY<br>PRODUCT SPEC: 108-2364<br>APPLICATION SPEC: 114-13120<br>WEIGHT: -<br>Customer Drawing |                                       |
| MATERIAL: -  |  | RESTRICTED TO: -   | SCALE: 4:1<br>SHEET: 2 OF 4<br>REV: E |



