

Coaxial Frequency Mixer

ZMX-8GH

Level 17 (LO Power +17 dBm) 3700 to 8000 MHz

Maximum Ratings

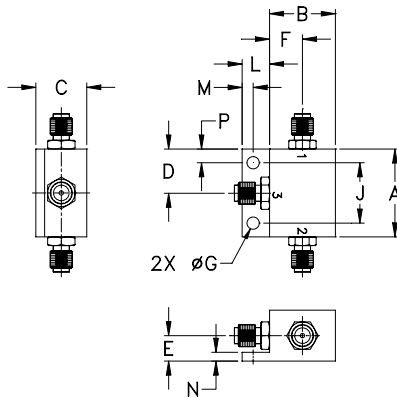
Operating Temperature	-55°C to 100°C
Storage Temperature	-55°C to 100°C
RF Power	200mW
IF Current	40mA

Permanent damage may occur if any of these limits are exceeded.

Coaxial Connections

LO	1
RF	2
IF	3

Outline Drawing



Outline Dimensions (inch/mm)

A	B	C	D	E	F	G	H
1.00	.75	.58	.50	.29	.38	.140	--
25.40	19.05	14.73	12.70	7.37	9.65	3.56	--
J	K	L	M	N	P	wt	
.687	--	.32	.13	.10	.16	grams	
17.45	--	8.13	3.30	2.54	4.06	25.0	

Features

- wide frequency range, 3700 to 8000 MHz
- low conversion loss, 5.8 dB typ.
- high L-R isolation, 40 dB typ.

Applications

- SATCOM
- instrumentation
- defense & federal communications
- SHF



CASE STYLE: BU413

Connectors	Model
SMA	ZMX-8GH

Electrical Specifications

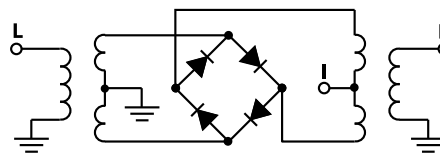
FREQUENCY (MHz)	CONVERSION LOSS (dB)	LO-RF ISOLATION (dB)		LO-IF ISOLATION (dB)	
		Typ.	Min.	Typ.	Min.
3700-8000	DC-2000	40	20	18	8

1 dB COMP.: +14 dBm typ.

Typical Performance Data

Frequency (MHz)	Conversion Loss (dB)	Isolation L-R (dB)	Isolation L-I (dB)	VSWR RF Port (:1)	VSWR LO Port (:1)
3700.00	3730.00	4.92	33.44	12.23	5.02
3886.79	3916.79	4.99	31.47	12.75	5.42
4000.00	4030.00	5.03	32.33	13.05	5.47
4260.38	4290.38	4.94	41.36	14.54	5.55
4509.43	4539.43	4.87	35.93	14.36	6.15
4758.49	4788.49	4.82	34.53	15.93	5.69
5000.00	4970.00	4.34	40.09	17.09	5.09
5256.60	5226.60	4.34	40.85	17.27	3.30
5505.66	5475.66	4.30	38.82	18.71	2.15
5754.72	5724.72	4.42	40.06	18.33	1.77
6000.00	5970.00	5.20	36.23	18.33	1.74
6439.62	6409.62	4.38	33.53	17.51	1.73
6688.68	6658.68	4.17	31.56	17.45	1.64
7000.00	6970.00	4.42	29.88	17.86	1.59
7240.00	7210.00	4.51	27.35	17.67	1.55
7493.33	7463.33	4.39	24.88	17.03	1.40
7683.33	7653.33	4.71	22.85	16.56	1.25
7746.67	7716.67	4.97	22.55	17.30	1.13
7810.00	7780.00	5.05	22.39	17.74	1.10
8000.00	7970.00	4.96	22.56	21.24	1.08

Electrical Schematic



Mini-Circuits
ISO 9001 ISO 14001 AS 9100 CERTIFIED

For detailed performance specs & shopping online see web site

P.O. Box 350166, Brooklyn, New York 11235-0003 (718) 934-4500 Fax (718) 332-4661 The Design Engineers Search Engine www.minicircuits.com Provides ACTUAL Data Instantly at [minicircuits.com](http://www.minicircuits.com)

IF/RF MICROWAVE COMPONENTS

Notes: 1. Performance and quality attributes and conditions not expressly stated in this specification sheet are intended to be excluded and do not form a part of this specification sheet. 2. Electrical specifications and performance data contained herein are based on Mini-Circuit's applicable established test performance criteria and measurement instructions. 3. The parts covered by this specification sheet are subject to Mini-Circuit's standard limited warranty and terms and conditions (collectively, "Standard Terms"); Purchasers of this part are entitled to the rights and benefits contained therein. For a full statement of the Standard Terms and the exclusive rights and remedies thereunder, please visit Mini-Circuit's website at www.minicircuits.com/MCLStore/terms.jsp.

REV. A
M151107
ZMX-8GH
DJ/TD/CP/AM
151009
Page 1 of 2

