

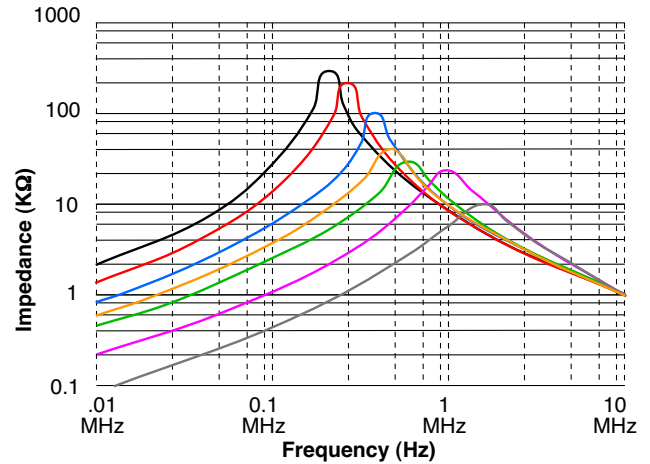
- Used as AC Power Line Filters in CTV, VTR, Audios, PC's, Facsimilies and Power Supply Applications
- Applicable Frequency : 0.1 MHz to 10 MHz
- Low Profile In Vertical Core Layout
- UL940-V Recognized Materials
- UL1446 Insulating System
- 2-Section Bobbin

### Electrical Parameters @ 25° C

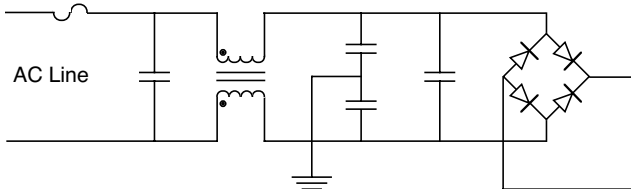
Part Number	Inductance (mH Min.) [Pins 1-2, 4-3]	Current Rating (A rms Max.)
EPZ3058-901	0.9	2.0
EPZ3058-182	1.8	1.6
EPZ3058-452	4.5	1.0
EPZ3058-722	7.2	0.8
EPZ3058-902	9.0	0.7
EPZ3058-183	18	0.5
EPZ3058-273	27	0.4

• Isolation : 2000 Vrms • Temperature Rise : 45°C Max. •

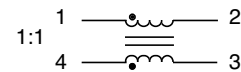
### Impedance Characteristics



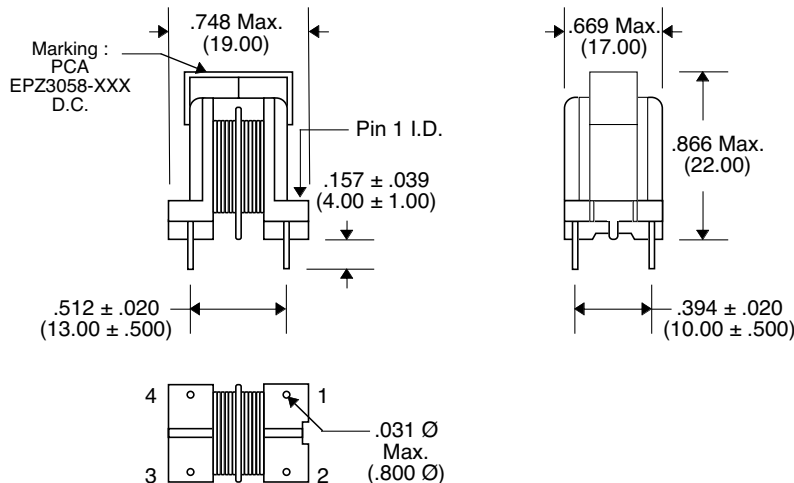
### Circuit Sample



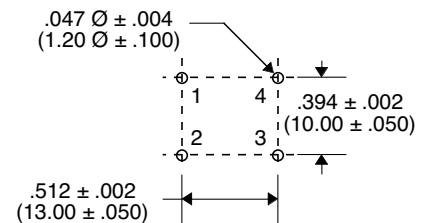
### Schematic



### Package



### Recommended PWB Piercing Plan



Unless Otherwise Specified Dimensions are in Inches /mm ± .010 / .25