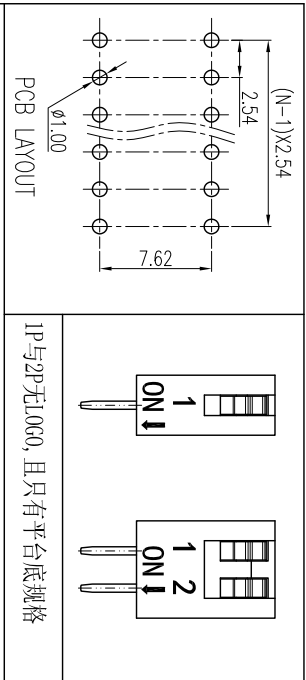
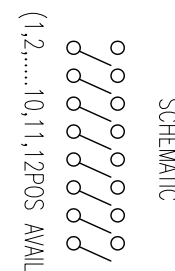
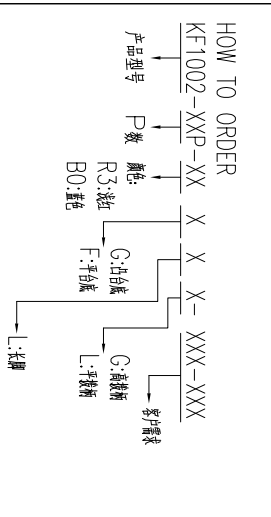
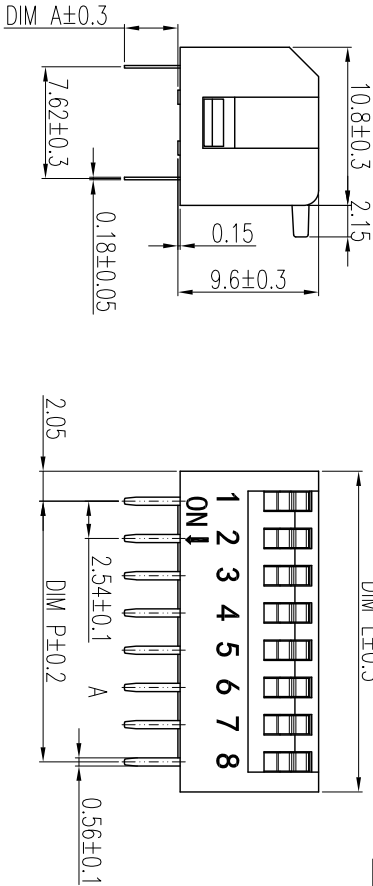
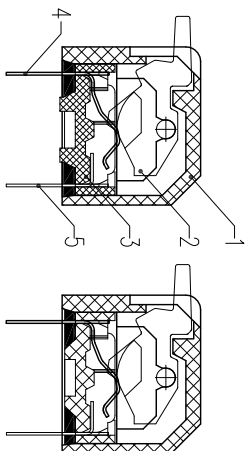
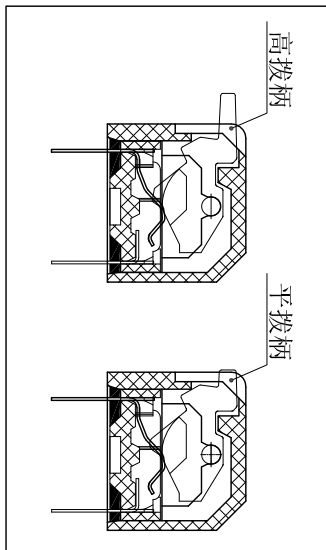
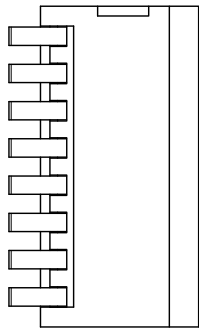


REV	ECN	CONTENT	CHECK	DATE
V0.0		初版发行	LJ	2019.01.13
V1.0		整理图纸	WL	2020.06.03



1P与2P无10G0, 且只有平台底座规格

DIM A	长针
凸台底座	3.65
平台底座	3.80



General tolerance in mm			radii and chamfers			shorter angle side		
over	to	±	over	to	±	over	to	±
0	3	±0.15	0	0.5	±0.2	0	10	±30°
3	6	±0.2	0.5	3	±0.2	10	50	±20°
6	30	±0.25	3	6	±0.5	50	120	±0.5
30	120	±0.3	6	6	±1.0	100	100	0.2
120	400	±0.5	1000	10	±0.8	150	150	0.3
400	400	±0.8	1000	10	±1.0	100	100	0.5
1000	1000	±1.0	1000	10	±1.0	150	150	0.5

POLES	DIM P	DIM L
1	/	4.11
2	2.54	6.65
3	5.08	9.19
4	7.62	11.73
5	10.16	14.27
6	12.70	16.81
7	15.24	19.35
8	17.78	21.89
9	20.32	24.43
10	22.86	26.97
11	25.40	29.51
12	27.94	32.05

序号	零件名称	零件编码	数量	材质	备注
1	外壳	/	1	工程塑料	UL94V-0
2	拔柄	/	/	/	/
3	底座	/	1	工程塑料	UL94V-0
4	PIN1	/	P	铜合金	镀金
5	PIN2	/	P	铜合金	镀金

APP.	DATE	2020.6.3	NAME	KF1002-XXP-XXXXLX-0N-XXX
CHK.	DATE	2020.6.3	DWGNO.	W20004301
DESIGNER	DATE	2020.6.3	SHEET	1/1
DATE	2020.6.3	PROJECTION-METHOD		



焊接说明:
 手工焊接: 30W电烙铁, 320±5°C, 3S max
 波峰焊接: 250±10°C, 5S max
 焊接前保持开关在“OFF”状态

- 技术要求:
- 额定电流: 25mA, 24VDC (开与关切换时) 100mA, 50VDC (开与关不切换时)
 - 接触阻抗: ≤50mΩ (初始), ≤100mΩ (寿命测试后)
 - 绝缘电阻: ≥100MΩ/500 VDC
 - 耐电压: 500VAC/1minute
 - 拨动力: 1000g max
 - 机械寿命: ≥2000 cycles
 - 使用温度: -40°C~+85°C
 - 存储温度: -40°C~+85°C
 - 符合RoHS要求