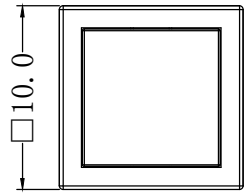
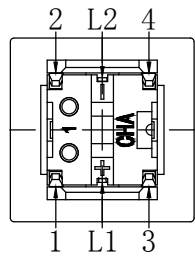
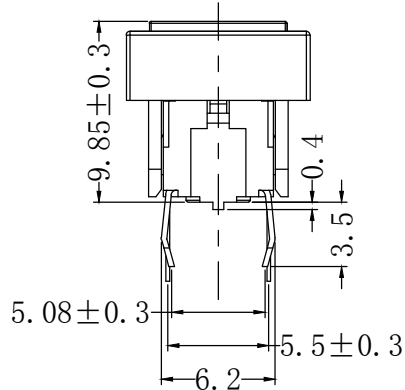
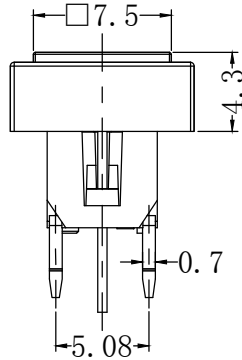
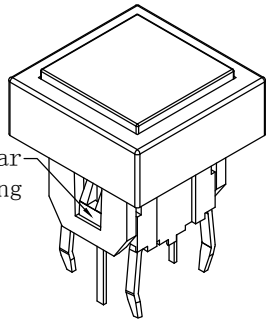


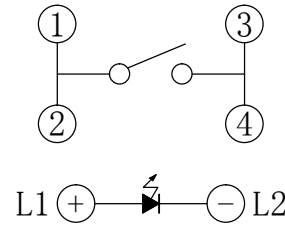
修 改	记号	内 容	修改者	日期



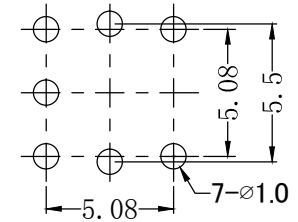
Negative polar coloring



### CIRCUIT



### P. C. B. LAYOUT



C601	A	1	0	-	-	1	S	R					
CATEGORY		BASIC SWITCH		CAP TYPE		FUNCTION		LED COLOR		LED BRIGHTNESS		LED TYPE	
A	Without cap	1	Square	-	Nothing	Non-Illuminated		1	Red	S	Standard	R	Round Gibbous
B	With cap	2	Round *	1		-	Standard type	2	Yellow	C	Customization	F	Flat head
		3	Bugle form	2		M	SMT type	3	Green				
				5			Illuminated	4	Blue				
				15		L	Standard type	5	White				
						ML	SMT type	6	Pure Green				
								7	Amber				
								12	Red/Yellow				
								13	Red/Green				
								23	Yellow/Green				

- 1.RATING :12VDC 50mA.
- 2.INSULATION RESISTANCE :100MΩ Min(250VDC).
- 3.DIELECTRIC STRENGTH :250VAC 50/60Hz for 1min.
- 4.CONTACT RESISTANCE :100mΩ Max.
- 5.ELECTRICALLY LIFE :100,000cycles.
- 6.OPERATING TEMPERATURE RANGE :-20°C~+70°C.
- 7.OPERATING FORCE :160±50g / 250±50g.
- 8.TRAVEL :0.25±0.1 mm
- 9.IT IS RECOMMENDED THAT THE NUMBER OF TIMES TO PULL OUT THE CAP SHOULD NOT EXCEED 3

If you have any other requirements, please ask the sales representative for details

序号	零件名称	材质	数量	备注	Color	VR	IF	Recommended Operating Current	VF		
									Nom.	Max	
					Red	DC 5V	20mA	20mA	2.0 V	2.4 V	
1	外壳	尼龙	1	黑色	Yellow	DC 5V	20mA	20mA	2.3 V	2.5 V	
2	散光片	PC	1	白色	Green	DC 5V	20mA	20mA	2.4 V	2.7 V	
3	推柄	尼龙	1	白色	Blue	DC 5V	20mA	20mA	3.3 V	3.6 V	
4	底座	塑胶	尼龙	1	黑色	White	DC 5V	20mA	20mA	3.0 V	3.6 V
		端子	黄铜	1	镀银						
5	弹片	不锈钢	1		Full Green	DC 5V	20mA	20mA	3.0 V	3.6 V	
6	LED灯		1		Amber	DC 5V	20mA	20mA	2.3 V	2.5 V	

本公司智慧财产，未经同意不得复制  
Without permission, copying is strictly prohibited. Chau-hua

ALL DIMENSIONS ARE IN MILLIMETERS, GENERAL TOLERANCES MAX. ± 0.20mm.

制图	H H	比例		日期	
设计	H H	单位	MM	材质	
校对	LZY	全周倒角		数量	
审核	M W	视图		处理	



昭华集团(香港)有限公司  
CHAU-HUA GROUP (HONGKONG) CO., LIMITED

名称 C601B-111L  
型号 C601 Series