



Series 6556 Universal Test Socket Receptacle

FEATURES

- The Aries Universal Test Socket Receptacle is sturdy, open-frame, and easily mounted to PC boards.
- Allows for easy replacement of Aries and other manufacturers' test sockets.
- The threaded inserts at both ends of the receptacle provide a firm and positive connection for the test socket.
- A choice of four collet pin styles makes the receptacle useful for any interconnection method.
- If a high-temperature version for use with socket shown on Data Sheet 10002 is required, please contact Aries for availability.

GENERAL SPECIFICATIONS

- SOCKET BODY: black UL 94V-0 glass-filled Polyphenylene Sulfide (PPS)
- PIN BODY: Brass 360 1/2-hard per UNS C36000 ASTM B16/B16M-05
- PIN BODY PLATING: 100 μ [2.54 μ] Ni underplate per SAE AMS-QQ-N-290, overplated with either: "X0" 200 μ [5.08 μ] min. matte Sn per ASTM B545-97(2004) e1 X0TL 200 μ [5.08 μ] min. 93/7 Sn/Pb per ASTM B545; "X1" 10 μ [0.25 μ] min. Au per MIL-G-45204
- 4-FINGER COLLET CONTACT: BeCu per UNS C17200 ASTM B194-08
- CONTACT PLATING: 30 μ [0.76 μ] min. Au per MIL-G-45204 over 50 μ [1.27 μ] min. Ni per QQ-N-290
- HARDWARE: Stainless Steel and Ni-plated Brass
- CONTACT CURRENT RATING: 3 amps
- OPERATING TEMPERATURE: 221°F [105°C] Sn plating; 302°F [150°C] Au plating
- ACCEPTS LEADS: 0.015-0.025 [0.38-0.64] in dia., 0.110-0.150 [2.54-3.81] long
- INSERTION FORCE: 180g/pin, based on 0.018 [0.46] dia. test lead
- WITHDRAWAL FORCE: 90g/pin, based on 0.018 [0.46] dia. test lead
- NORMAL FORCE: 140g/pin, based on 0.018 [0.46] dia. test lead

MOUNTING CONSIDERATIONS

- See Dimension Table on 2 of 2



CUSTOMIZATION: In addition to the standard products shown on this page, Aries specializes in custom design and production. Special materials, platings, sizes, and configurations can be furnished, depending on the quantity. **NOTE:** Aries reserves the right to change product general specifications without notice.

ORDERING INFORMATION

XX-6556-X X

Pins
(see Table)
Series

Plating
0 = Sn Body; Au Collet
OTL = Sn/Pb Body; Au Collet
1 = Au Body; Au Collet

Pin Style
1 = Solder Tail
2 = 2-level Wire Wrap
3 = 3-level Wire Wrap
4 = Solder Cup

ALL DIMENSIONS: INCHES [MILLIMETERS]

ALL TOLERANCES: ± 0.005 [0.13] UNLESS OTHERWISE SPECIFIED

ARIES UNIVERSAL TEST SOCKET SERIES X55X. CONSULT [DATA SHEET 10001](#) AND [DATA SHEET 10002](#) FOR DETAILS.

CONSULT FACTORY FOR OTHER SIZES AND CONFIGURATIONS

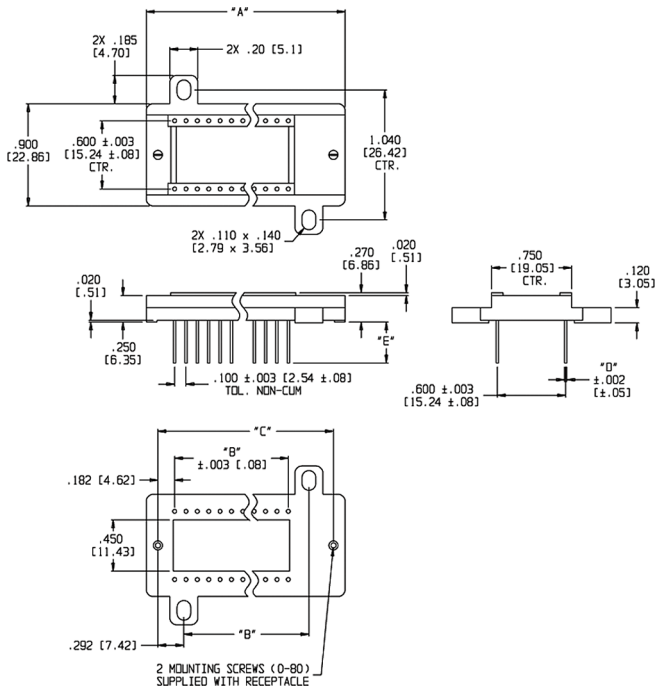


Bristol, PA 19007-6810 USA
TEL (215) 781-9956 • FAX (215) 781-9845
WWW.ARIESELEC.COM • INFO@ARIESELEC.COM





Series 6556 Universal Test Socket Receptacle

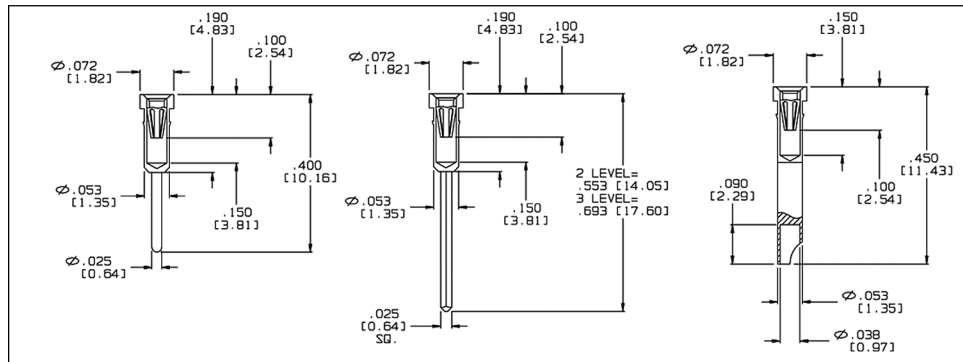


DIMENSION TABLE			
# Pins	Dim. "A"	Dim. "B"	Dim. "C"
24	1.790 [45.47]	1.100 [27.94]	1.615 [41.02]
28	1.990 [50.55]	1.300 [33.02]	1.815 [46.10]
32	2.190 [55.63]	1.500 [38.10]	2.015 [51.18]
36	2.390 [60.71]	1.700 [43.18]	2.215 [56.26]
40	2.590 [65.79]	1.900 [48.26]	2.415 [61.34]
42	2.660 [67.56]	2.000 [50.80]	2.515 [63.88]
44	2.790 [70.87]	2.100 [53.34]	2.615 [66.42]
48	2.990 [75.85]	2.300 [58.42]	2.815 [71.50]

SOLDER TAIL

WIRE WRAP

SOLDER CUP



Pin Style	Dim. "D" ±0.002 [±0.05]	Dim. "E"	Rec. PCB Hole Dia. Size ±0.002 [±0.05]
1	0.025 [0.64]	0.130 [3.30]	0.035 [0.89]
2	0.025 [0.64]	0.283 [7.19]	0.044 [1.12]
3	0.025 [0.64]	0.423 [10.74]	0.044 [1.12]
4	0.053 [1.35]	0.180 [4.57]	0.063 [1.60]



Bristol, PA 19007-6810 USA
 TEL (215) 781-9956 • FAX (215) 781-9845
 WWW.ARIESELEC.COM • INFO@ARIESELEC.COM



PRINTOUTS OF THIS DOCUMENT MAY BE OUT OF DATE AND SHOULD BE CONSIDERED UNCONTROLLED

10003
 2 of 2
 Rev. AA