

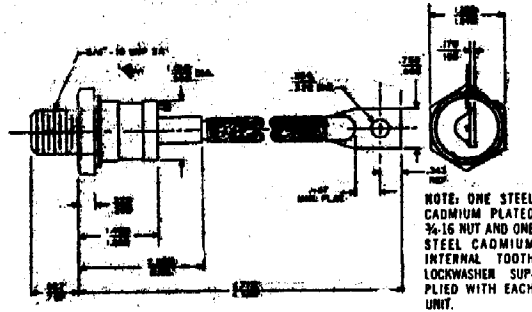
Silicon Rectifiers

1N3260-73,R

This product features:

- Choice of stud anode or stud cathode types
- Thermal fatigue resistant
- Low reverse current
- Great uniformity of product
- High surge current capabilities

OUTLINE DRAWING



RATINGS AND SPECIFICATIONS:⁽¹⁾

1N3260 1N3261 1N3262 1N3263 1N3264 1N3265 1N3266 1N3267 1N3268 1N3269 1N3270 1N3271 1N3272 1N3273

*Maximum Allowable Repetitive Peak Reverse Voltage, $V_{RRM(rep)}$ ⁽²⁾	50	100	150	200	250	300	350	400	500	600	700	800	900	1000
*Maximum Allowable DC Blocking Voltage, V_R ⁽²⁾	40	80	120	160	200	240	280	320	400	480	560	640	720	800
*Maximum Allowable Average Forward Current, $I_F(AV)$ (single phase, 125°C case temperature)	←————— 160 amperes —————→													
*Maximum Allowable Peak One-Cycle Surge Current, $I_{TSM}(surge)$ (60 cps single-phase basis, non-repetitive)	←————— 2000 amperes —————→													
Minimum I^2t Rating (non-repetitive)	←————— 8,250 amperes ² seconds (see Chart 7) —————→													
*Maximum Peak Forward Voltage Drop, V_{FM} ($I_T = 160$ amps DC, $T_C = 125^\circ C$)	←————— 1.6 volts —————→													
*Maximum Full Load Reverse Current, $I_{R(AV)}$ (full-cycle average, 125°C case temperature, single phase)	←————— 12 milliamperes —————→													
*Maximum Thermal Resistance, $R_{\theta JC}$ (junction to case)	←————— 0.3°C/watt —————→													
*Storage Temperature, T_{STG}	←————— 65°C to +175°C —————→													
*Operating Temperature, T_O	←————— 55°C to +190°C —————→													
*Stud Torque ⁽³⁾ —Maximum	←————— 325 inch-pounds (375 kg-cm) —————→													
—Minimum	←————— 275 inch-pounds (320 kg-cm) —————→													

NOTES: ⁽¹⁾ Models listed are stud cathode (forward polarity) types. Order 1N32____R for stud anode (reverse polarity) types. Ratings and specifications are for frequencies from 50 up to 400 cycles/second, except where noted differently.

⁽²⁾ Rating assumes a rectifier diode heat sink dissipation of 2.0°C/watt, or less.

⁽³⁾ Rating assumes a rectifier diode heat sink dissipation of 1.0°C/watt, or less.

⁽⁴⁾ Use of a silicone grease between the rectifier base and heat sink is recommended.

*Indicates JEDEC Registration Parameters.