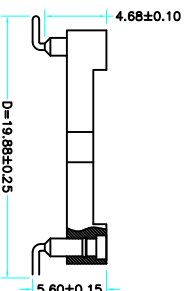
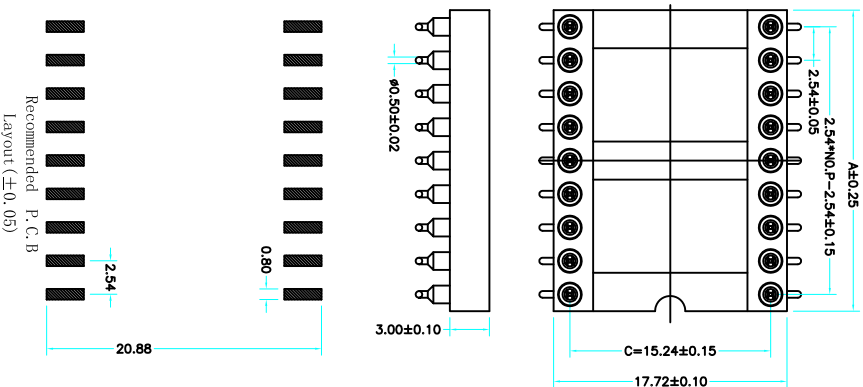


Poles	Dimensions(mm) A
2*02	5.08
2*03	7.62
2*04	10.16
2*05	12.70
2*06	15.24
2*07	17.78
2*08	20.32
2*09	22.86
2*10	25.40
2*12	30.48
2*14	35.56
2*16	40.64
2*20	50.80
2*21	53.34
2*24	60.96
2*25	63.50



Technical Data
Pin(outer sleeve):Brass,machined CuZn38Pb2
Clip(Contact 4 Finger):Beryllium copper,heat treated
Insulator:PBT UL94V-0 colour:black
Tin Plated:2um/80u"Ni,5um/200u"Sn
Gold Plated:2um"/80u"Ni,GF
Current rating:3Amps
Contact resistance:max 10m Ω
Dielectric strength:min 1000V RMS
Operating temperature:-40°C to+105°C

X5621 F V S-2*XX-C1524 D1988

- ① Series: NO.
- ② Category : F-Female
- ③ Welding Board Angle : V-Straight 180°
- ④ S:SMT
- ⑤ Row No-Pin No:2*XX-03,04,05,06,07,08,09,10,12,14,16, 20,21,24,25
- ⑥ Plastic Height :C=15.24mm
- ⑦ Pin Length :D:1988=19.88;

X5621FVS-2*XX-C1524D1988	PBT 94V-0	Brass	Tin Gold 1u"	X5621F
PART NO	Material	Material(Terminal)	Finish(Terminal)	Mates With XKB Pin Header

MARK	DESCRIPTION	DATE	REVISED	APPROVED	UNSPECIFIED TOLERANCES
ΔX					ANGULAR
ΔX					L ≤ 4
ΔX					4 < L ≤ 16
ΔX					16 < L ≤ 63
ΔX					L > 63
					±0.5
					±0.2
					±0.3
					±0.4
					±0.5
					DSND
					DWN
					CHKD
					APPD
					SCALE: N/A
					VIEW:
					UNIT: mm
					SIZE: A4
					MODEL TYPE:
					PART NO.:
					DWG NO.:
					X5621FVS-2*XX-C1524D1988
					WEIGHT
					1.0g
					SHEET
					1/1
					REVISION
					A0