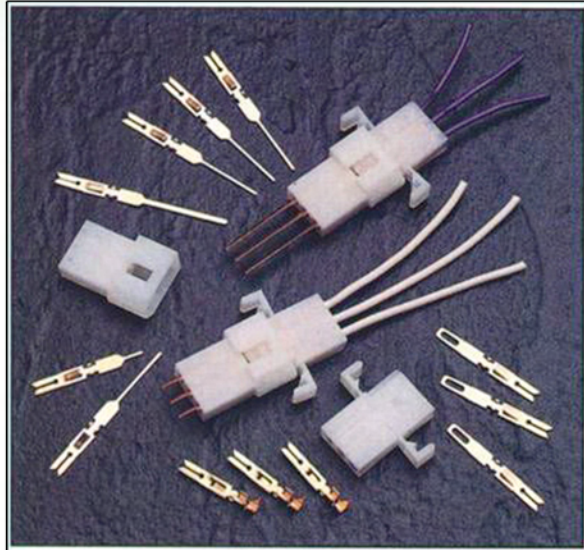
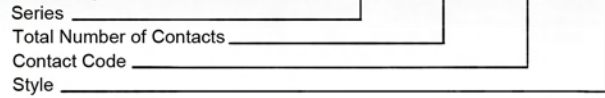




# SERIES 556



Example Part Number **556 - 003 - 500 - 102**



### Series 556

**Total Number of Contacts** 003

Contact Code	Description & Tail Size	Tail Length "G"
000	No Contacts Assembled	---
500	Wire Hole .110 x .024 (2.79 x 0.61)	.245 (6.22)
501	Taper Tail	.245 (6.22)
520	P.C. Tail .025 x .024 (0.64 x 0.61)	.215 (5.46)
540	Wire Wrap .050 x .024 (1.27 x 0.61)	.600(15.24)
541	Wire Wrap .026 x .024 (0.66 x 0.61)	.620(15.75)
542	Wire Wrap .050 x .024 (1.27 x 0.61)	.790(20.07)

Style and Material	Style
101	Plug
201	Receptacle
102	Plug with Panel Retention

### Ordering Code Notes

- 1) Crimp contacts are also available for the 556 series connectors. Contacts may be ordered separately for pre-wired or select position assembly

Part Number	Description	Silhouette
516-290-500	Wire Hole	
516-290-501	Taper Tail	
516-290-520	P.C. Tail	
516-290-540	Wire Wrap	
516-290-541	Wire Wrap	
516-290-542	Wire Wrap	
516-290-590	Crimp - Loose	
516-290-591	Crimp - 1800 Contacts per reel	

- 2) Insulator design prevents improper mating of individual plug and receptacle

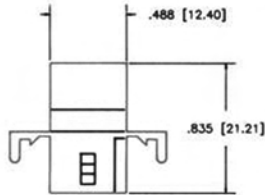
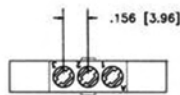
## FEATURES

- UL Recognized
- .156 (3.96) Contact Spacing
- Plug and Receptacle in 3 Contact Sizes
- Edacon Hermaphroditic Contact Mating Design
- Contact Termination Options include Crimp, P.C. Tail, Wire Hole, Wire Wrap and Taper Tail
- Tools Available for Contact Installation, Removal and Crimping

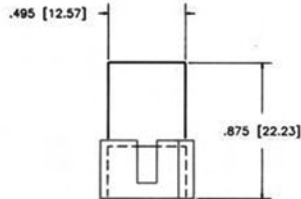
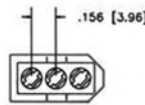
## SPECIFICATIONS

- Circuit board substrate available in 94V-0
- Insulator Material: White Nylon
- Contact Material: Phosphor Bronze Alloy CA-510
- Contact Plating: Gold over Nickel
- Current Rating: 8.5 Amperes
- Contact Resistance: 10 Milliohms Maximum
- Dielectric Withstanding Voltage: 2000 V AC rms at Sea Level
- Insulation Resistance: 5000 Megohms Minimum
- Operating Temperature: -65 to +105 Degrees C
- Insertion and Withdrawl Force: 2 to 16 oz (0.56 to 4.45N) per Contact Position

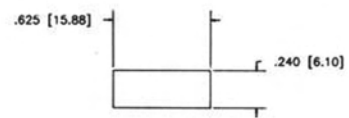
**MALE CONNECTOR**  
(Hermaphroditic contacts)



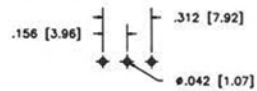
**FEMALE CONNECTOR**  
(Hermaphroditic contacts)



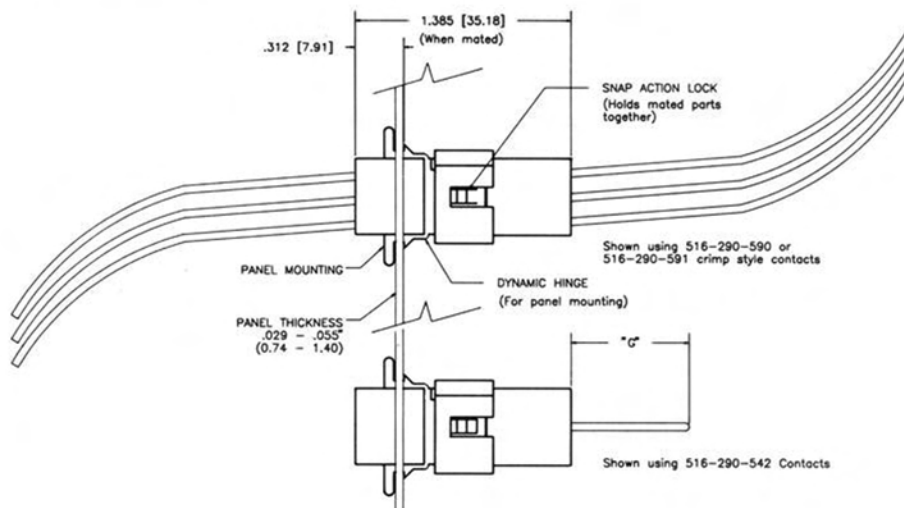
**RECOMMENDED  
PANEL OPENING**  
(If Desired)



**RECOMMENDED  
BOARD LAYOUT**



**CONNECTOR MATING FACE VIEWS**



# Mouser Electronics

Authorized Distributor

Click to View Pricing, Inventory, Delivery & Lifecycle Information:

[EDAC:](#)

[556-003-000-201](#) [556-003-000-101](#) [556-003-000-102](#)