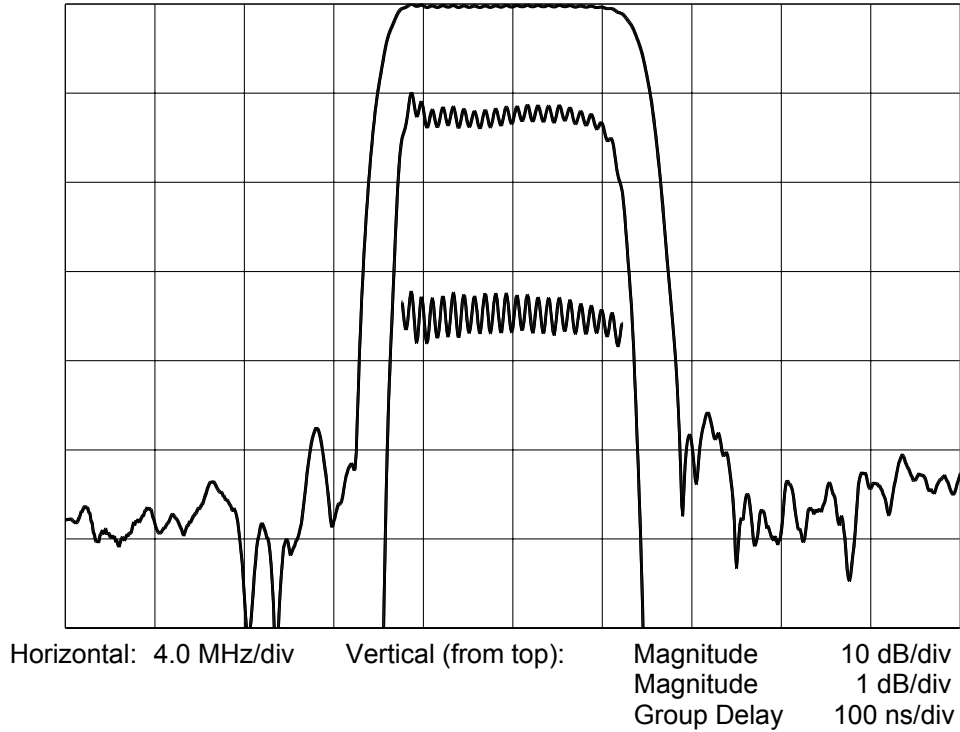




TYPICAL PERFORMANCE



SPECIFICATION

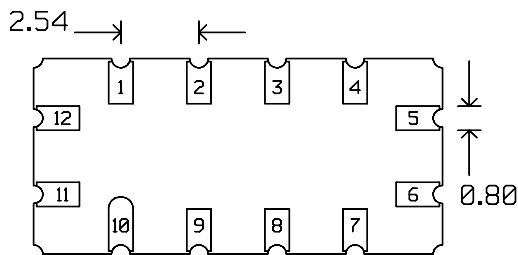
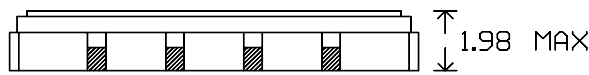
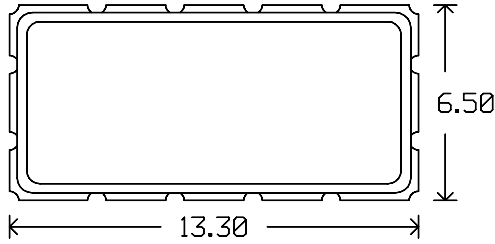
Parameter	Min.	Typ.	Max.	Units.
Center Frequency (Fc) ¹	139.6	140.0	140.4	MHz
Insertion Loss		10.2	11.0	dB
1 dB Bandwidth	8.0	10.2		MHz
3 dB Bandwidth	10.0	11.1		MHz
35 dB Bandwidth		14.0	15.0	MHz
Passband Ripple ²		0.5	1.0	dB p-p
Phase Ripple ²		6.0	15	deg p-p
Group Delay Ripple ²		75	120	ns p-p
Absolute Delay		1.06		us
Ultimate Rejection	40	50		dB
Temperature Coefficient of Frequency		-94		ppm/° C
Substrate Material	YZ Lithium Niobate			
Source and Load Impedance	50			Ω
Ambient Temperature	25			° C

Notes:

1. Mean Value of 3 dB points. 3dB measured from peak.
2. Measured over 90% of 3 dB Bandwidth



PACKAGE OUTLINE

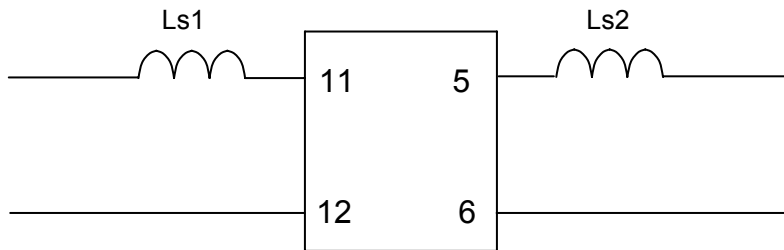


Units: mm

Pin Configuration:

Input: 11
 Input Return: 12
 Output: 5
 Output Return: 6
 Ground: All other pins

MATCHING CIRCUIT



Component values:

Ls1 = 47 nH Ls2 = 100 nH (Minimum Q = 45)

Notes

1. Recommend use of 5% tolerance components.
2. Optimum values depend on board layout. Values intended as guide only.

