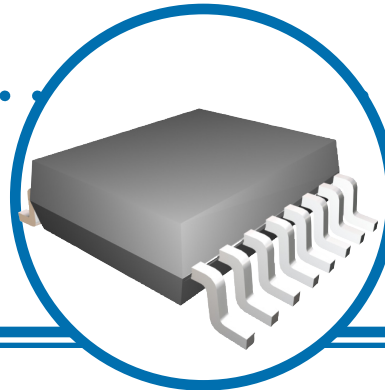


TaNCap[®] Tapped Filter Network



Tapped Filter Series

- Improves signal quality
- Reduces unwanted signal transmissions
- Highly integrated - replaces up to 16 discretes
- RoHS compliant and Sn/Pb terminations available
- Proven TaNCap[®] thin film technology in QSOP, SOIC, and TSSOP packages



IRC's TaNCap[®] tapped filter networks are designed for the most demanding low pass filter applications. These TaNSil[®] technology thin film networks offer attenuation of high frequency signal components with minimal inductive effects. EMI/RFI reduction, improved signal quality and reduction of false triggers in digital circuits while minimizing insertion loss are characteristics of these silicon based filter networks.

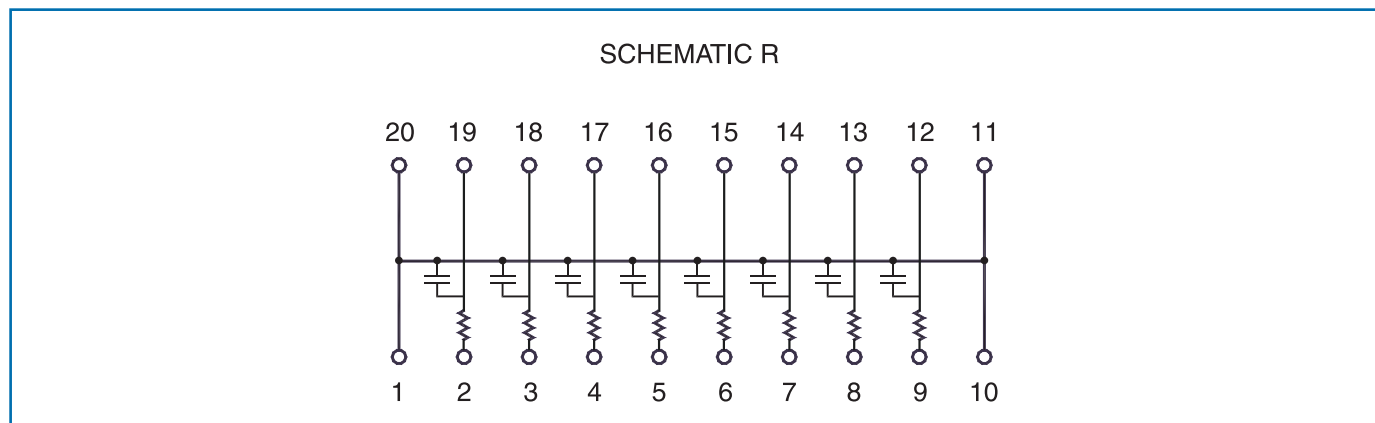
The SOIC, QSOP, and TSSOP packages offer a high level of integration in today's most popular surface mount configurations. One tapped filter network replaces up to 16 discrete components.

The TaNCap[®] series of resistor-capacitor networks are manufactured using IRC's military and space proven tantalum nitride thin film technology. For high reliability combined with superior performance, use IRC TaNCap[®] Tapped Filter networks for your most demanding high speed analog and digital designs.

Electrical Data

	Range	Tolerance (%)	Breakdown Voltage (volts)	TCR (ppm/°C)	Max. Power Dissipation (watts)	Operating Temp. Range (°C)
Resistors	10Ω to 100Ω	±10	N/A	±100	0.1 per resistor	-55 to +125
Capacitors	10pF to 33pF	±20	200 to 100	N/A	N/A	
	34pF to 200pF	±10	100 to 25			

Schematic Data



General Note

IRC reserves the right to make changes in product specification without notice or liability. All information is subject to IRC's own data and is considered accurate at time of going to print.

TaNCap[®] Tapped Filter Network



Physical Data

Model	Body Type	# Pins	Reference IRC Datasheet
QS20R	QSOP	20	Surface Mount QSOP Termination Networks
SL20R	SOIC-W	20	Surface Mount SOIC Termination Networks
TS20R	TSSOP	20	Surface Mount TSSOP Termination Networks

Ordering Data

Sample Part Number **GUS** - **QS20RLF** - **330** - **K** - **470** - **M**

Family **GUS**

Model **QS20RLF**
 QS20R, QS20RLF = Tapped Filter QSOP Package
 SL20R, SL20RLF = Tapped Filter SOIC-W Package
 TS20R, TS20RLF = Tapped Filter TSSOP Package

Note: LF suffix indicates 100% matte tin, Pb-free termination

Resistor Code **330**
 Example: 330 = 33Ω, 101 = 100Ω

Resistor Tolerance **K**
 K = ±10%, M = ±20%

Capacitor Code **470**
 Example: 470 = 47pF, 330 = 33pF

Capacitor Tolerance **M**
 M = ±20%

Packaging Available
 Tubes, Tape & Reel

For additional information or to discuss your specific requirements, please contact our Applications Team using the contact details below.