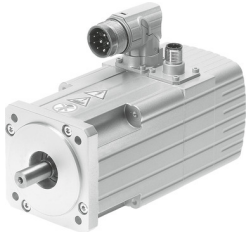


Servo motor EMMS-AS-70-S-HS-RM-S1

Part number: 1550917

FESTO



Data sheet

Feature	Value
Number of pole pairs	4
Type code	EMMS-AS
Rotor position sensor	Absolute encoder, multi-turn
Rotor position sensor interface	EnDat® 22
Rotor position sensor measuring principle	Inductive
Temperature monitoring	PTC resistor
Max. rotational speed	6460 1/min
Nominal rotary speed	5800 1/min
Insulation protection class	F
Motor constants	1.016 Nm/A
Nominal operating voltage DC	565 V
Motor nominal power	794 W
DC nominal voltage	565 V
Motor nominal current	1.29 A
Rotor position sensor resolution	19 bit
Phase-phase winding resistance	22.442 Ohm
Winding inductance phase-phase	31.785 mH
Type of winding switch	Star inside
Peak current	5.9 A
Voltage constant, phase-to-phase	61.83 mVmin
Rating class according to EN 60034-1	S1
CE marking (see declaration of conformity)	As per EU EMC directive As per EU low voltage directive
Corrosion resistance class (CRC)	2 - Moderate corrosion stress
Storage temperature	-20 °C ... 60 °C
Relative air humidity	0 - 90 %
Degree of protection	IP65
Ambient temperature	-10 °C ... 40 °C
Certification	RCM compliance mark c UL us - Recognized (OL)
Total output inertia moment	0.379 kgcm ²
Nominal torque	1.31 Nm
Peak torque	5.17 Nm
Stall torque	1.5 Nm
Permissible axial shaft load	75 N
Permissible radial shaft load	150 N

Feature	Value
MTTF, subcomponent	76 years, rotor position sensor
MTTFd, subcomponent	152 years, rotor position sensor
Product weight	2100 g
Electrical connection technology	Plug
Note on materials	RoHS-compliant
Conforms to standard	IEC 60034