



2D14B_1U Series

2W Single Output - Fixed Input - Isolated & Unregulated
DIP PACKAGE

DC-DC Converter

2 Watt

- ⊕ Small footprint
- ⊕ 14 Pin DIL package
- ⊕ Low ripple and noise
- ⊕ 1kVDC isolation
- ⊕ RoHS compliance
- ⊕ Temperature range: -40°C ~ +85°C
- ⊕ Efficiency up to 86%
- ⊕ Internal SMD construction

The 2D14B_1U series is a family of cost effective 2W single & dual output DC-DC converters. These converters achieve low cost and ultra-miniature DIP14 pin size. Devices are encapsulated using flame retardant resin. High performance features include 1000VDC input/output isolation, high efficiency operation and output voltage accuracy of $\pm 3\%$ maximum. Standard features include an input range of $\pm 10\%$ tolerance and low output ripple and noise.



Common specifications	
Short circuit protection:	1 second
Case temperature:	100°C MAX
Cooling:	Nature convection
Operation temperature range:	-40°C – +85°C
Storage temperature range:	-40°C – +125°C
Soldering temperature:	260°C (1.5mm from case for 10 sec.)
Storage humidity range:	< 95%
Case material:	Plastic [UL94-V0]
Pin material:	0.5mm Alloy42 solder-coated
Potting material:	Plastic [UL94-V0]
Safety standard:	IEC 60950-1
MTBF:	>3,500,000 hours
Weight:	2.6g
Dimensions:	20.32 x 10.16 x 6.88mm

Input specifications						
Item	Test condition	Min	Typ	Max	Units	
Voltage range				± 10	%	
Input filter	Capacitor					
Input reflected ripple current	Simulated source inductance of 12 μ H		20		mA _{pk-pk}	
Input surge voltage (100ms)	<ul style="list-style-type: none"> • 3.3VDC input • 5VDC input • 12VDC input • 15VDC input • 24VDC input • 48VDC input 			6 7 15 18 28 54	VDC	

Isolation specifications						
Item	Test condition	Min	Typ	Max	Units	
Isolation voltage	Tested for 1 minute	1000			VDC	
Isolation resistance		1000			M Ω	
Isolation capacitance			60		pF	

Output specifications						
Item	Test condition	Min	Typ	Max	Units	
Output voltage accuracy	100% full load			± 3	%	
Line regulation	Per V_{in} change of $\pm 1\%$		± 1.2		%	
Load regulation	20% to 100% full load • 3.3V output • others			± 20 ± 10	%	
Temperature coefficient	100% full load			± 0.02	%/°C	
Ripple&Noise	20MHz Bandwidth		75		mV _{pk-pk}	
Switching frequency	Full load, nominal input		80		KHz	

EMC specifications		
CE*	EN55032	CLASS B
RE	EN55032	CLASS B
ESD	IEC/EN61000-4-2	perf. Criteria A
RS	IEC/EN61000-4-3	perf. Criteria A
EFT**	IEC/EN61000-4-4	perf. Criteria A
Surge**	IEC/EN61000-4-5	perf. Criteria A
CS	IEC/EN61000-4-6	perf. Criteria A
PFMF	IEC/EN61000-4-8	perf. Criteria A

* Input filter components are required to help meet conducted emissions class B, which application refer to the EMI filter of design & feature configuration.

** An external filter capacitor is required if the module has to meet IEC61000-4-4 and IEC61000-4-5.

Example:

2D14B_0505S1U

2= 2Watt; S7= SIP7; A= Pinning; 5Vin; 5Vout; S= Single Output;
1= 1kVDC; U= Unregulated Output

Note:

1. Operation under minimum load will not damage the converter; However, they may not meet all specification listed, and that will reduce the life of product.
2. All specifications measured at $T_a=25^\circ\text{C}$, humidity<75%, nominal input voltage and rated output load unless otherwise specified.
3. In this datasheet, all the test methods of indications are based on corporate standards.
4. Only typical models listed, other models may be different, please contact our technical person for more details.

2D14B_1U Series

2W Output Dual Output - Fixed Input - Isolated & Unregulated
DIP PACKAGE

Part Number	Input Voltage [V]	Input Current [mA]		Output Voltage [VDC]	Output Current [mA, full load]	Efficiency [%, max]	Capacitor load (μ F, max)
		no load	full load				
2D14B_0303S1U	3.3	26	808	3.3	400	75	470
2D14B_0305S1U	3.3	40	819	5	400	74	470
2D14B_0307S1U	3.3	40	808	7.2	277.7	75	470
2D14B_0309S1U	3.3	45	808	9	222.2	75	470
2D14B_0312S1U	3.3	50	767	12	166.7	79	470
2D14B_0315S1U	3.3	47	767	15	133.3	79	470
2D14B_0318S1U	3.3	50	787	18	111.1	77	470
2D14B_0324S1U	3.3	47	797	24	83.3	76	470
2D14B_0503S1U	5	30	367	3.3	400	72	470
2D14B_0505S1U	5	30	512	5	400	78	470
2D14B_0507S1U	5	30	500	7.2	277.7	80	470
2D14B_0509S1U	5	30	500	9	222.2	80	470
2D14B_0512S1U	5	30	487	12	166.7	82	470
2D14B_0515S1U	5	30	487	15	133.3	82	470
2D14B_0518S1U	5	30	487	18	111.1	82	470
2D14B_0524S1U	5	30	487	24	83.3	82	470
2D14B_1203S1U	12	20	152	3.3	400	72	470
2D14B_1205S1U	12	20	216	5	400	77	470
2D14B_1207S1U	12	20	208	7.2	277.7	80	470
2D14B_1209S1U	12	20	208	9	222.2	80	470
2D14B_1212S1U	12	20	208	12	166.7	80	470
2D14B_1215S1U	12	20	208	15	133.3	80	470
2D14B_1218S1U	12	20	208	18	111.1	80	470
2D14B_1224S1U	12	20	208	24	83.3	80	470
2D14B_2403S1U	24	10	76	3.3	400	72	470
2D14B_2405S1U	24	10	105	5	400	79	470
2D14B_2407S1U	24	10	115	7.2	277.7	72	470
2D14B_2409S1U	24	10	104	9	222.2	80	470
2D14B_2412S1U	24	10	104	12	166.7	80	470
2D14B_2415S1U	24	10	104	15	133.3	80	470
2D14B_2418S1U	24	10	104	18	111.1	80	470
2D14B_2424S1U	24	10	104	24	83.3	80	470
2D14B_4803S1U	48	6	45	3.3	400	60	470
2D14B_4805S1U	48	6	54	5	400	77	470
2D14B_4807S1U	48	6	54	7.2	277.7	77	470
2D14B_4809S1U	48	6	54	9	222.2	77	470
2D14B_4812S1U	48	6	53	12	166.7	78	470
2D14B_4815S1U	48	6	53	15	133.3	78	470
2D14B_4818S1U	48	6	53	18	111.1	78	470
2D14B_4824S1U	48	6	55	24	83.3	75	470

2D14B_1U Series

2W Output Dual Output - Fixed Input - Isolated & Unregulated
DIP PACKAGE

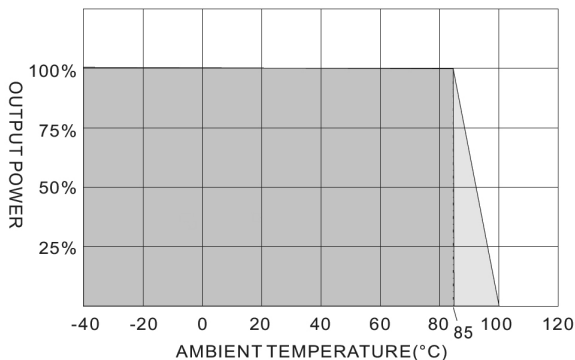
Part Number	Input Voltage [V]	Input Current [mA]		Output Voltage [VDC]	Output Current [mA, max]	Efficiency [%, max]	Capacitor load (μ F, max)
		no load	full load				
2D14B_0303D1U	3.3	25	808	\pm 3.3	\pm 200	75	\pm 220
2D14B_0305D1U	3.3	45	808	\pm 5	\pm 200	75	\pm 220
2D14B_0307D1U	3.3	40	797	\pm 7.2	\pm 138.1	76	\pm 220
2D14B_0309D1U	3.3	40	797	\pm 9	\pm 111.1	76	\pm 220
2D14B_0312D1U	3.3	45	777	\pm 12	\pm 83.3	78	\pm 220
2D14B_0315D1U	3.3	45	777	\pm 15	\pm 66.67	78	\pm 220
2D14B_0318D1U	3.3	45	777	\pm 18	\pm 55.55	78	\pm 220
2D14B_0324D1U	3.3	45	767	\pm 24	\pm 41.67	79	\pm 220
2D14B_0503D1U	5	30	406	\pm 3.3	\pm 200	66	\pm 220
2D14B_0505D1U	5	30	555	\pm 5	\pm 200	72	\pm 220
2D14B_0507D1U	5	30	555	\pm 7.2	\pm 138.1	72	\pm 220
2D14B_0509D1U	5	30	519	\pm 9	\pm 111.1	77	\pm 220
2D14B_0512D1U	5	30	512	\pm 12	\pm 83.3	78	\pm 220
2D14B_0515D1U	5	30	500	\pm 15	\pm 66.67	80	\pm 220
2D14B_0518D1U	5	30	500	\pm 18	\pm 55.55	80	\pm 220
2D14B_0524D1U	5	30	500	\pm 24	\pm 41.67	80	\pm 220
2D14B_1203D1U	12	20	164	\pm 3.3	\pm 200	67	\pm 220
2D14B_1205D1U	12	20	222	\pm 5	\pm 200	75	\pm 220
2D14B_1207D1U	12	20	219	\pm 7.2	\pm 138.1	76	\pm 220
2D14B_1209D1U	12	20	216	\pm 9	\pm 111.1	77	\pm 220
2D14B_1212D1U	12	20	203	\pm 12	\pm 83.3	82	\pm 220
2D14B_1215D1U	12	20	203	\pm 15	\pm 66.67	82	\pm 220
2D14B_1218D1U	12	20	203	\pm 18	\pm 55.55	82	\pm 220
2D14B_1224D1U	12	20	203	\pm 24	\pm 41.67	82	\pm 220
2D14B_2403D1U	24	10	80	\pm 3.3	\pm 200	68	\pm 220
2D14B_2405D1U	24	10	111	\pm 5	\pm 200	75	\pm 220
2D14B_2407D1U	24	10	111	\pm 7.2	\pm 138.1	75	\pm 220
2D14B_2409D1U	24	10	104	\pm 9	\pm 111.1	80	\pm 220
2D14B_2412D1U	24	10	101	\pm 12	\pm 83.3	82	\pm 220
2D14B_2415D1U	24	10	101	\pm 15	\pm 66.67	82	\pm 220
2D14B_2418D1U	24	10	101	\pm 18	\pm 55.55	82	\pm 220
2D14B_2424D1U	24	10	101	\pm 24	\pm 41.67	82	\pm 220
2D14B_4803D1U	48	6	45	\pm 3.3	\pm 200	60	\pm 220
2D14B_4805D1U	48	6	57	\pm 5	\pm 200	73	\pm 220
2D14B_4807D1U	48	6	54	\pm 7.2	\pm 138.1	77	\pm 220
2D14B_4809D1U	48	6	54	\pm 9	\pm 111.1	77	\pm 220
2D14B_4812D1U	48	6	52	\pm 12	\pm 83.3	80	\pm 220
2D14B_4815D1U	48	6	52	\pm 15	\pm 66.67	80	\pm 220
2D14B_4818D1U	48	6	52	\pm 18	\pm 55.55	80	\pm 220
2D14B_4824D1U	48	6	52	\pm 24	\pm 41.67	80	\pm 220

2D14B_1U Series

2W Output Dual Output - Fixed Input - Isolated & Unregulated
DIP PACKAGE

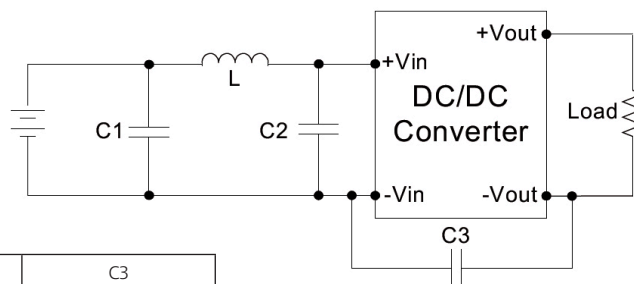
Typical characteristics

Derating Curve



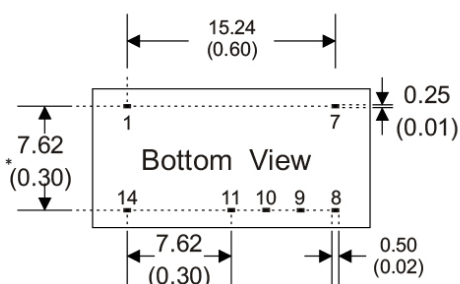
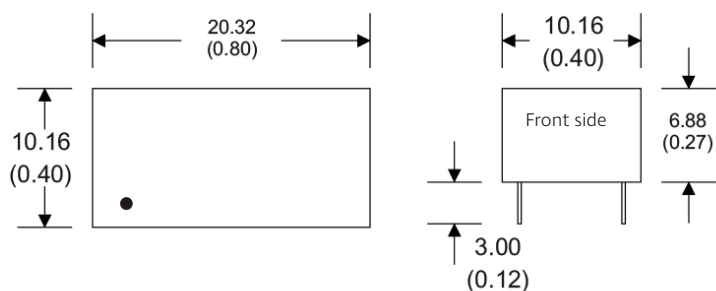
EMI filter

Input filter components (C1, L, C2, C3) are used to help meet conducted emissions requirement for the module. These components should be mounted as close as possible to the module; and all leads should be minimized to decrease radiated noise.



	C1	L	C2	C3
2D14B_03xxS1U	1210, 2.2μF/100V	18μH		
2D14B_05xxS1U	1210, 2.2μF/100V	18μH		
2D14B_12xxS1U	1210, 2.2μF/100V	18μH		
2D14B_15xxS1U	1210, 2.2μF/100V	18μH		
2D14B_24xxS1U	1210, 2.2μF/100V	18μH	1210, 2.2μF/100V	1206, 470pF/2KV
2D14B_48xxS1U	Electrolytic capacitor, 10μF/100V	18μH	1210, 2.2μF/100V	1206, 470pF/2KV

Mechanical Dimensions



Pin connections:

PIN	Single	Dual
1	-Vin	-Vin
7	N.C.	N.C.
8	N.P.	Common
9	+Vout	+Vout
10	N.P.	N.P.
11	-Vout	-Vout
14	+Vin	+Vin

Note:

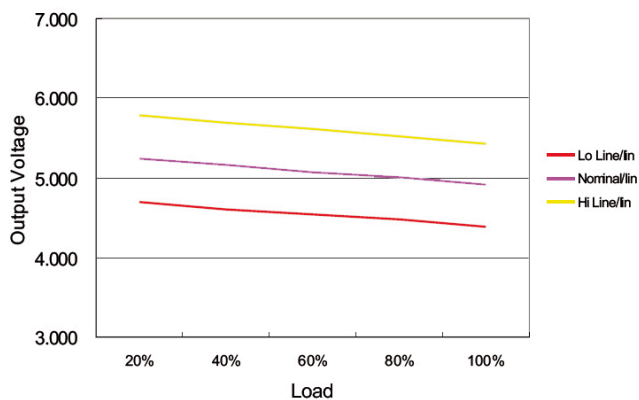
Unit: mm [inch]
Pin diameter: 0.5 ±0.05 [0.02 ±0.002]
Pin pitch and length tolerance: ±0.35 [±0.014]
Case tolerance: ±0.5 [±0.02]

2D14B_1U Series

2W Output Dual Output - Fixed Input - Isolated & Unregulated
DIP PACKAGE

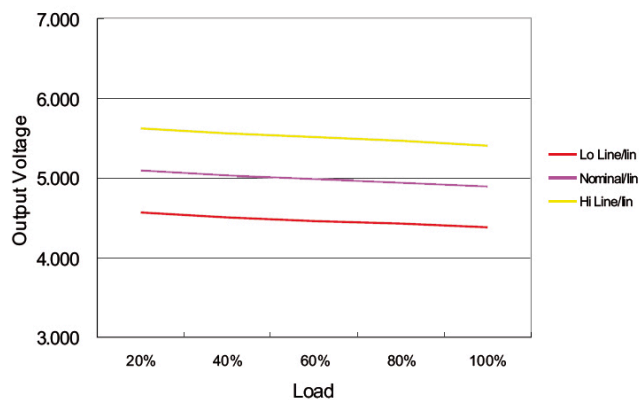
Loading vs. output voltage

LOADING VS OUTPUT VOLTAGE



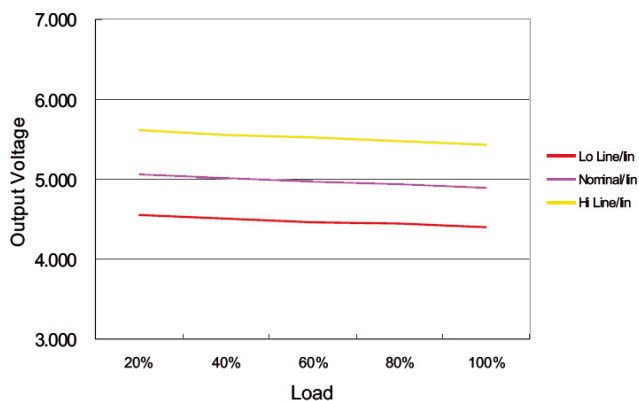
05 Models

LOADING VS OUTPUT VOLTAGE



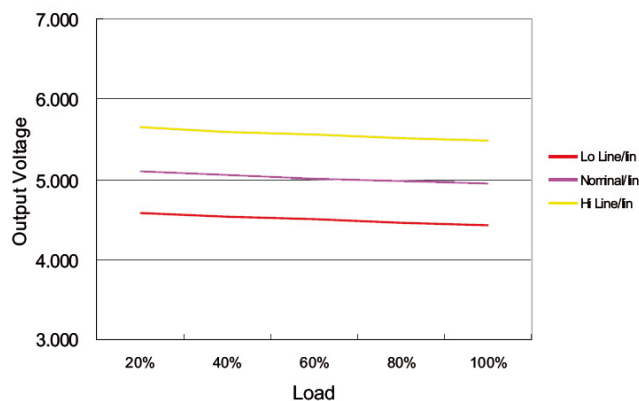
12 Models

LOADING VS OUTPUT VOLTAGE



24 Models

LOADING VS OUTPUT VOLTAGE



48 Models