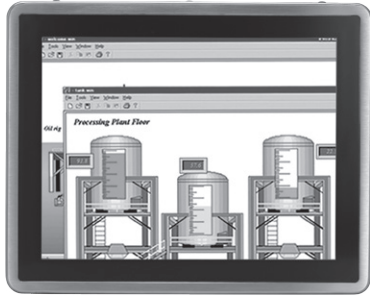


GOT817-834

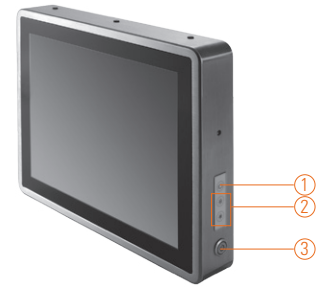
17" SXGA TFT IP66-rated Stainless Steel Fanless PCT (or Resistive Touch) Panel Computer with Intel® Atom™ Processor E3827 and Flat Bezel Design (-20°C ~ +55°C)

NEW

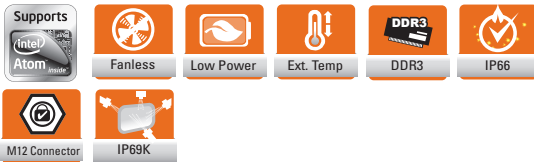


waterproof, dustproof ventilation valve

1. Backlight switch
2. Brightness adjust
3. Power switch (ATX)
4. DC power connector (A-coded M12)
5. COM 1 (RS-232/422/485) (A-coded M12)
6. COM 2 (RS-232/422/485) (A-coded M12)
7. Ethernet (X-coded)
8. USB 2.0 x 2 (A-coded M12)
9. USB 2.0 x 2 (A-coded M12)



▲ Side view



Introduction

The 17-inch GOT817-834 is specially designed for food processing applications. Its IP66-rated stainless steel housing protects entire system from damage of water, powder and dust. It also outfits wide operating temperature range of -20°C ~ +55°C. Thus, this robust unit is best suited for extreme humidity, dusty or wet spaces in food factories or kitchens and more harsh applications.

IP66-sealed system

The Axiomtek stainless touch panel PC GOT817-834 adopts a water/dust-proof housing design and five IP66-rated M12 connectors. It passes IP66 test by SGS and verified salt mist test.

Full IP66 and IP69K compliance

Full NEMA4/IP66-rated, M12 I/O connectors and IP69K compliance that ensures the product's ability to resist ingress of high temperature and high pressure water. The Axiomtek GOT817-834 was tested by a spray nozzle with high temperature water (80°C) and a flow rate of 14-16 L/min and a nozzle hold with distance 10-15cm away from the device at angles of 0°, 30°, 60° and 90° for 30 seconds. The outstanding 17" stainless touch panel PC is qualified to meet harsh environment applications.

Wide temp. (-20°C ~ +55°C) & anti-vibration (2G) design

The rugged 17" industrial stainless touch panel PC GOT817-834 supports wide temperature range from -20°C to +55°C and a-coded M12 connectors. Besides, the patent of anti-vibration for SSD ensures system reliability and stability for mission-critical environment.

Features

- 17" SXGA TFT LCD flat bezel-projected capacitive (or resistive) touch
- IP66/IP69K-rated (NEMA4X) water/dust/corrosion-proof design
- Full stainless steel enclosure with type 316
- Wide operating temperature range of -20°C ~ +55°C
- Fanless system with Intel® Atom™ processor E3827 1.75 GHz
- Wireless network connectivity
- Wide range 12~36VDC
- Supports suspension and VESA mount
- M12 type I/O connectors for harsh environments

Specifications

Enclosure	Stainless type 316	
LCD Panel	Display Type	17" SXGA TFT LCD
	Brightness (cd/m ²)	350 nits
	Resolution	1280 x 1024
	Viewing Angle (H/V)	170°/160°
Main System	CPU	Intel® Atom™ processor E3827 1.75 GHz (Bay Trail)
	Chipset	SoC Integrated
	System Memory	1 x 204-pin DDR3L SO-DIMM max. up to 8 GB
	BIOS	AMI with Axiomtek standard features; such as, SmartView, Ethernet Boot ROM (RPL & PXE), customer CMOS backup
	Storage	1 x 2.5" SSD 1 x CFast™
Watchdog Timer	255 levels, 1-255 sec.	
Onboard Graphics	Integrated in Intel® GFX	



Specifications

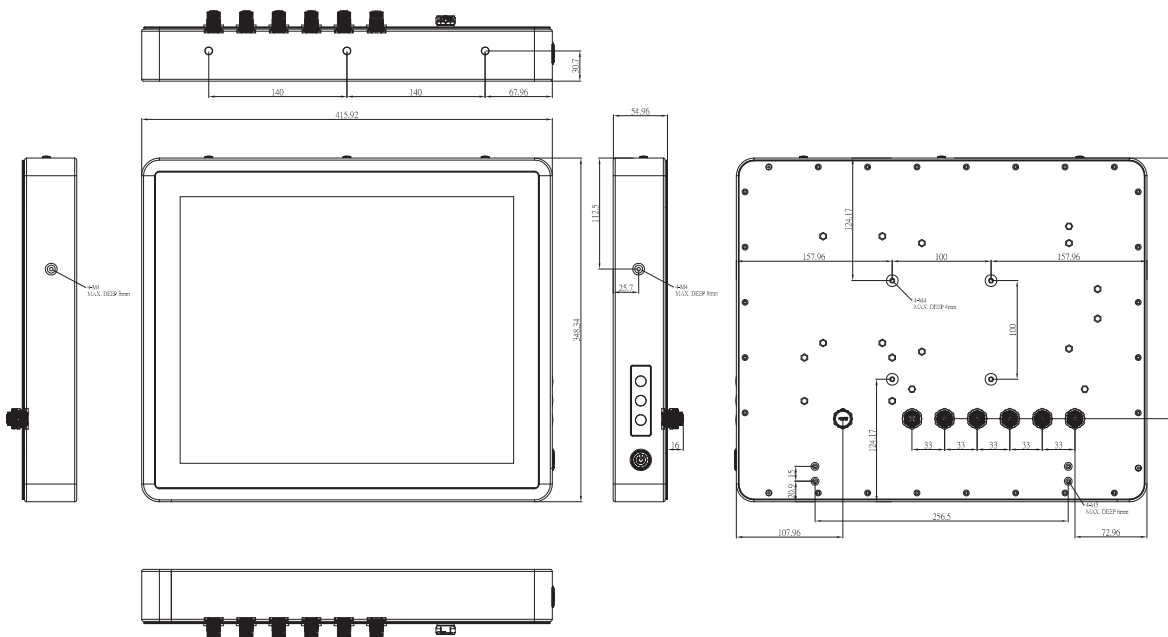
I/O Connector	2 x RS-232/422/485 (default RS-232, A-Coded) 4 x USB 2.0 (A-Coded) 1 x 10/100/1000Mbps Ethernet (X-Coded)
Expansion Interface	2 x PCIe Mini Card slot
Touchscreen	5-wire resistive touch or projected capacitive multi-touch
Power Supply	Power input 12-36VDC
Dimensions	415.92 mm (16.37") (W) x 54.96 mm (2.16") (D) x 348.34 mm (13.71") (H)
Packing Dimensions	250 mm (9.84") (W) x 585 mm (23.03") (D) x 615 mm (24.21") (H)
Weight (net/gross)	7.04 kg(15.52 lb)/10.3 kg (22.71 lb)
Environment	Operating temperature: -20°C ~ +55°C (-4°F ~ +131°F) Storage Temperature: -30°C ~ +70°C (-22°F ~ +158°F) Relative humidity: 10% ~ 95% @ 40°C, non-condensing Operation vibration: 2G, 5 ~ 500Hz, random for 2.5" SSD 2G, 5 ~ 500Hz, random for CFast™
Certificate	CE

* W.T.: Wide Temperature. All W.T. supported products have to be sorted by Axiomtek.

Optional Accessories

594B8122100E	Water-proof COM port cable (1.8 m)
594B8122820E	Water-proof USB cable (1.8 m)
594B8152710E	Water-proof LAN cable (1.8 m)
50964A23000E	72W/24V power adapter with M12 connector

Dimensions



Ordering Information

Sunlight readable type	
GOT817-834-C-DC	17" SXGA fanless IP66-rated stainless steel touch panel computer with Intel® Atom™ E3827, projected capacitive touch screen, 12-36VDC power input, flat-bezel design and Wi-Fi or 3G
GOT817-834-C-RF-DC	17" SXGA fanless IP66-rated stainless steel touch panel computer with Intel® Atom™ E3827, projected capacitive touch screen, 12-36VDC power input, flat-bezel design and Wi-Fi or 3G
GOT817-834-R-DC	17" SXGA fanless IP66-rated stainless steel touch panel computer with Intel® Atom™ E3827, 5-wire flat resistive touch screen, 12-36VDC power input, flat-bezel design and Wi-Fi or 3G
GOT817-834-R-RF-DC	17" SXGA fanless IP66-rated stainless steel touch panel computer with Intel® Atom™ E3827, 5-wire flat resistive touch screen, 12-36VDC power input, flat-bezel design and Wi-Fi or 3G

* Specification and certifications are based on options and may vary.

Optional EOS Installation

WES 7
WEBS

Optional OS Installation

Windows® 7
Windows® 8/8.1

Overview

Fanless Touch Panel Computers

2

Heavy-duty Fanless Touch Panel Computers

Industrial Touch Panel Computers

Industrial Touch panel Monitors

Infotainment Touch Panel Computers

Healthcare & Medical Solutions

Open Frame Panel Computers

Accessories

