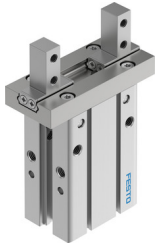


# Parallel gripper DHPC-L-25-A-NO-S-1

Part number: 8116874

FESTO



## Data sheet

| Feature  | Value  |
|--|--|
| Size   | 25   |
| Stroke per gripper jaw                           | 11 mm  |
| Max. interchangeability                          | 0.2 mm   |
| Max. gripper jaw angular play ax, ay             | 0 deg  |
| Max. gripper jaw backlash Sz                     | 0 mm   |
| Rotational symmetry                              | ≤0.2 mm  |
| Pneumatic gripper repetition accuracy            | ≤0.02 mm   |
| Number of gripper jaws                           | 2  |
| Mounting position                                | Any  |
| Mode of operation                                | Single-acting<br>Open  |
| Gripper function                                 | Parallel   |
| Structural design                                | Connection direction at side<br>Lever<br>Side mounting type for gripper fingers<br>Positively driven motion sequence |
| Guide  | Ball guide   |
| Position sensing                                 | For proximity sensor   |
| Symbol   | 00997349   |
| Total gripping force at 6 bar, closing           | 241.3 N  |
| Operating pressure                               | 0.25 MPa ... 0.8 MPa   |
| Operating pressure                               | 2.5 bar ... 8 bar  |
| Operating pressure                               | 36.25 psi ... 116 psi  |
| Max. operating frequency of pneumatic gripper    | 3 Hz   |
| Min. opening time at 6 bar                       | 171 ms   |
| Min. closing time at 6 bar                       | 46 ms  |
| Max. mass per external gripper finger            | 550 g  |
| Operating medium                                 | Compressed air as per ISO 8573-1:2010 [7:4:4]  |
| Information on operating and pilot media         | Operation with oil lubrication possible (required for further use)   |
| Corrosion resistance class (CRC)                 | 0 - No corrosion stress  |
| LABS conformity                                  | VDMA24364-B2-L   |
| Ambient temperature                              | -10 °C ... 60 °C   |
| Gripping force per gripper jaw at 6 bar, closing | 120.6 N  |
| Mass moment of inertia                           | 2.18 kgcm <sup>2</sup>   |
| Maximum force on gripper jaw Fz, static          | 127.5 N  |
| Maximum torque on gripper jaw, Mx static         | 0.97 Nm  |
| Maximum torque on gripper jaw, My static         | 1.94 Nm  |

| <b>Feature</b>                           | <b>Value</b>   |
|--|--|
| Maximum torque on gripper jaw, Mz static | 0.97 Nm  |
| Product weight                           | 495 g  |
| Type of mounting                         | Optionally:<br>Direct mounting via through-hole<br>Direct fastening via thread<br>On mounting frame<br>With through-hole and dowel pin<br>With internal thread and dowel pin |
| Pneumatic connection                     | M5   |
| Note on materials                        | Free of copper and PTFE<br>RoHS-compliant  |
| Housing material                         | Aluminum, anodized   |
| Gripper jaw material                     | High-alloy stainless steel   |