

THIS DRAWING IS UNPUBLISHED. RELEASED FOR PUBLICATION. 20

SET UP GAUGE 2119599-1, LOC A, DIST 66. REVISIONS table with columns for P, LTM, DESCRIPTION, DATE, DWN, APVD.

APPLICATOR STYLE CONVERSION CHART. Table with columns: PART NUMBER, REVISION, DESCRIPTION, FEED TYPE, CONVERT TO, PART NUMBERS REQUIRED.

APPLICATOR DATA table with columns: CRIMP, SIZE, TYPE. Includes WIRE and INSUL values.

TERMINAL DATA: ITT CANNON TERMINAL ITT CANNON CRIMP SPECIFICATION. Includes WIRE STRIP LENGTH and INSULATION DIAMETER RANGE.

TERMINALS APPLIED table with columns: TE TERMINAL, ITT CANNON TERMINAL, TE SEAL, ITT CANNON SEAL, CABLE DIAMETER.

WIRE SIZE table with columns: WIRE SIZE, CRIMP HEIGHT mm [INCH], CRIMP HEIGHT REFERENCE SETTING.

- RECOMMENDED SPARE PARTS
GREASE BEARING SURFACES LIGHTLY
LUBRICATE DAILY PER THE APPLICATOR INSTRUCTION SHEET SUPPLIED WITH THE APPLICATOR.
APPLICATOR SPECIFIC DATA TO BE ENTERED INTO BLANK MEMORY CHIP AT ASSEMBLY.

\*WARNING
ON INSTALLATION, SET WIRE DISC, ITEM 40 TO LARGEST WIRE SIZE SETTING. USE OF SETTINGS BELOW MINIMUM REQUIRED CRIMP HEIGHT SETTING WILL CAUSE DAMAGE TO CRIMP TOOLING.

Table with columns: ITEM NO, PART NO, DESCRIPTION. Includes items 260 and 252.

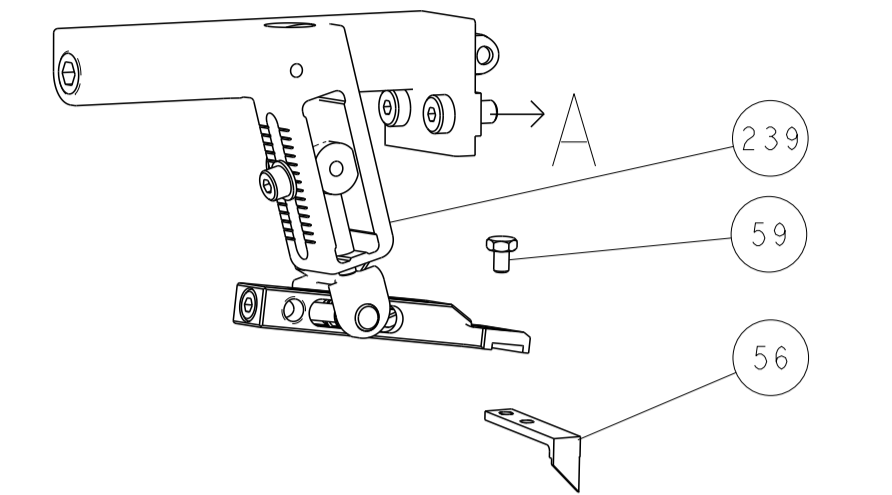
ATLANTIC VERSION
Shown on sheets 1 of 4 & 2 of 4
(Pacific version shown on sheets 3 of 4 & 4 of 4)

Main parts list table with columns: P, LTM, DESCRIPTION, DATE, DWN, APVD. Lists various mechanical parts like PUSH ROD, BUSHING, FEED CAM, etc.

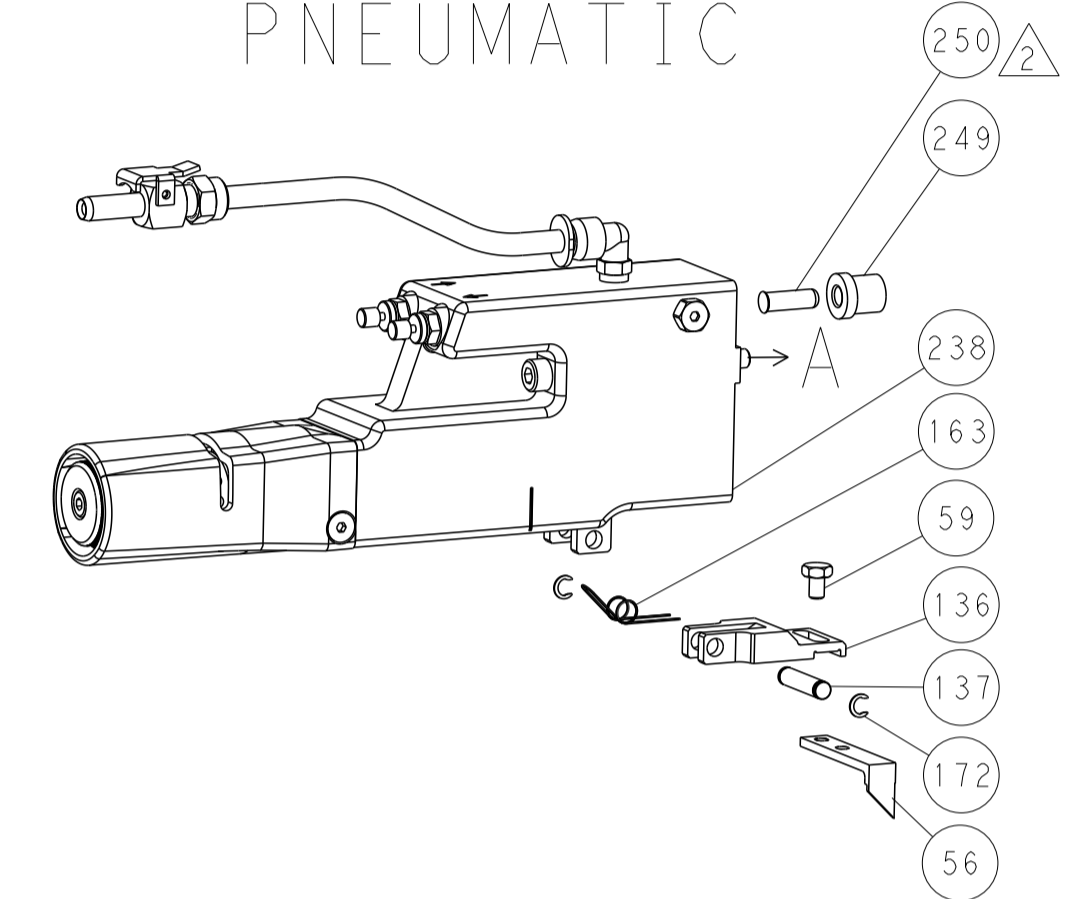
STE TE Connectivity logo and drawing information including dimensions, tolerances, material, weight, and scale.

LOC		DIST		REVISIONS					
A		66		P	LTN	DESCRIPTION	DATE	DWN	APVD
				-	-	SEE SHEET 1	-	-	-

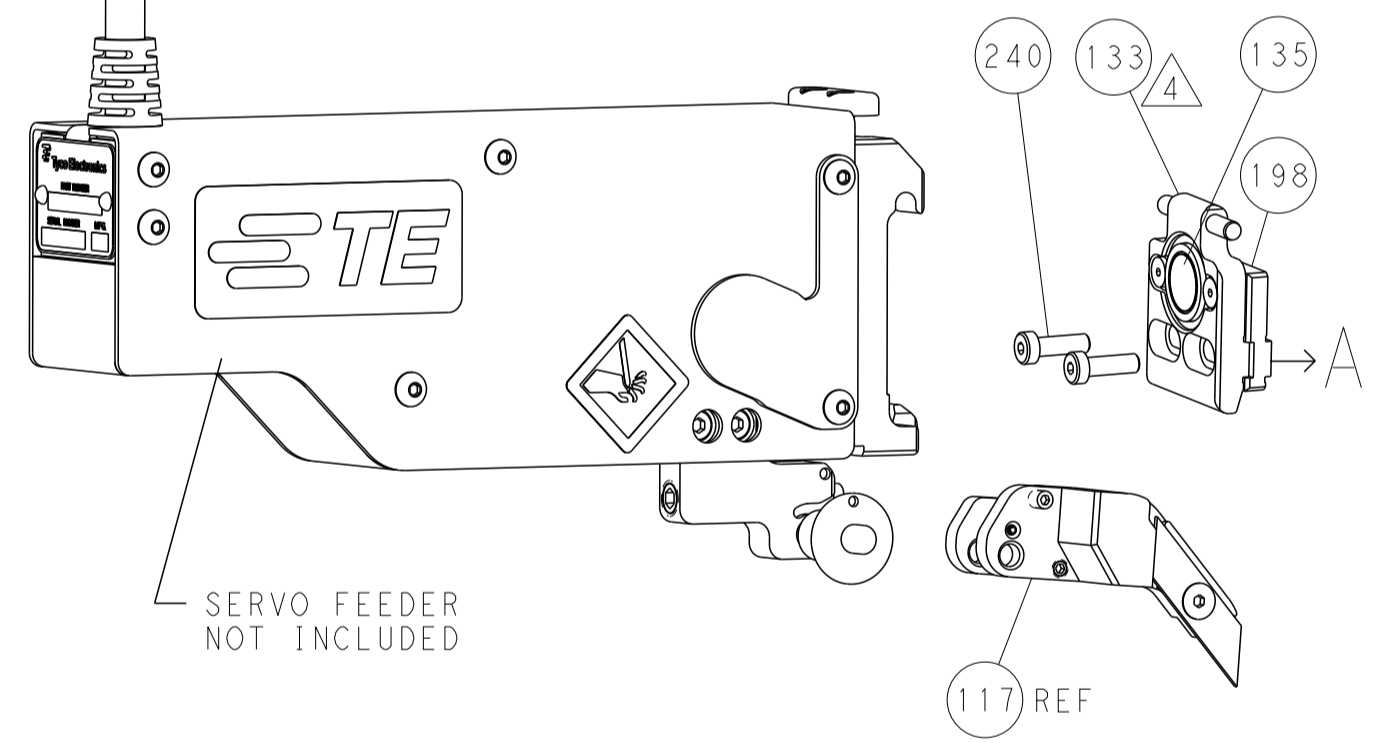
### FEED TYPE MECHANICAL



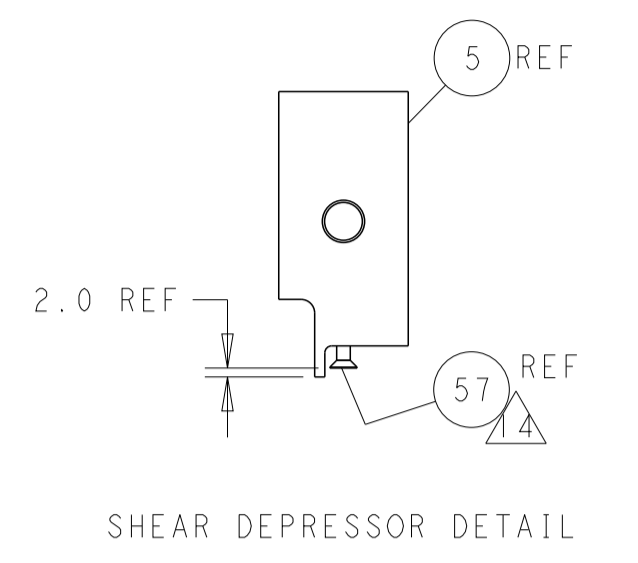
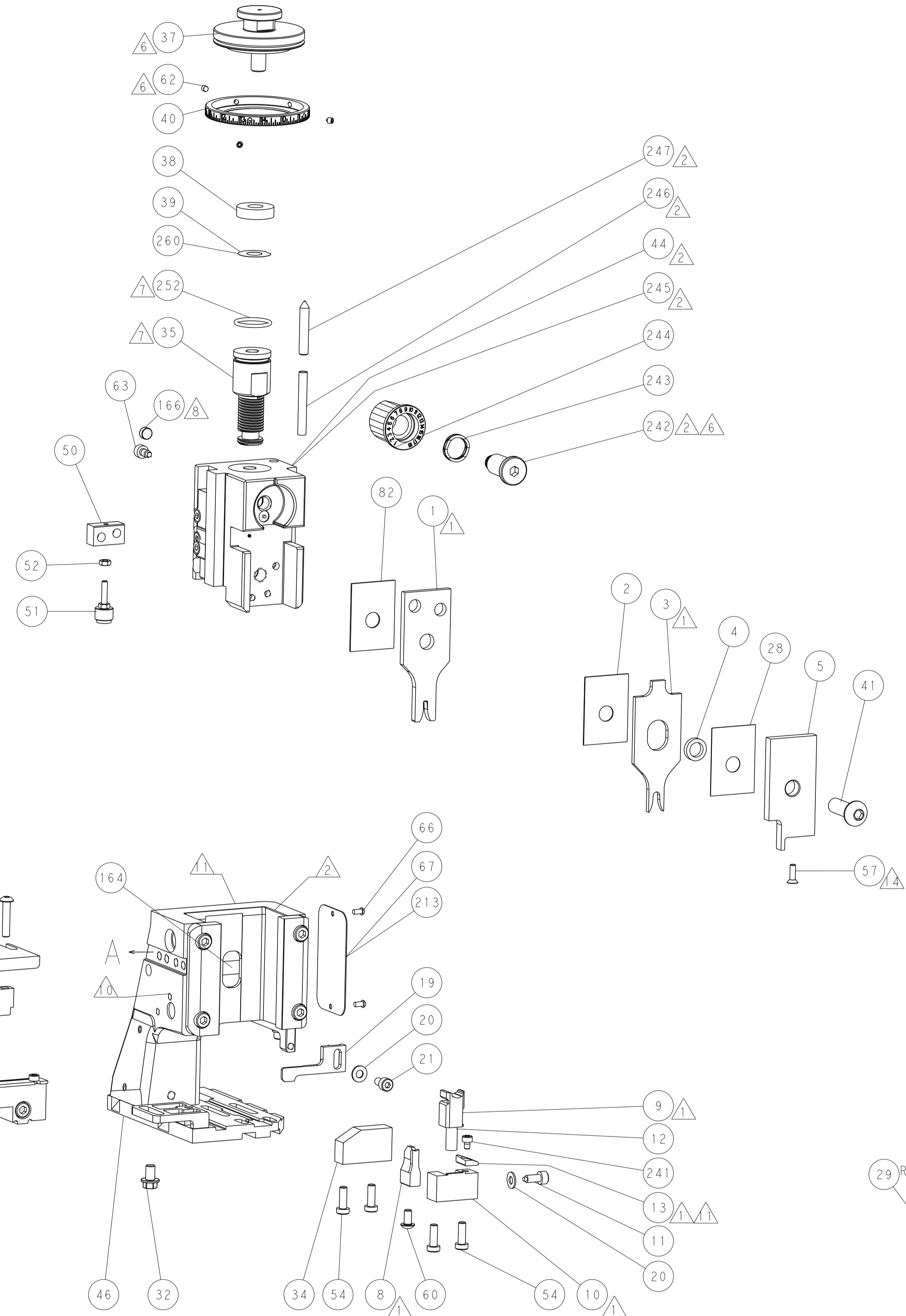
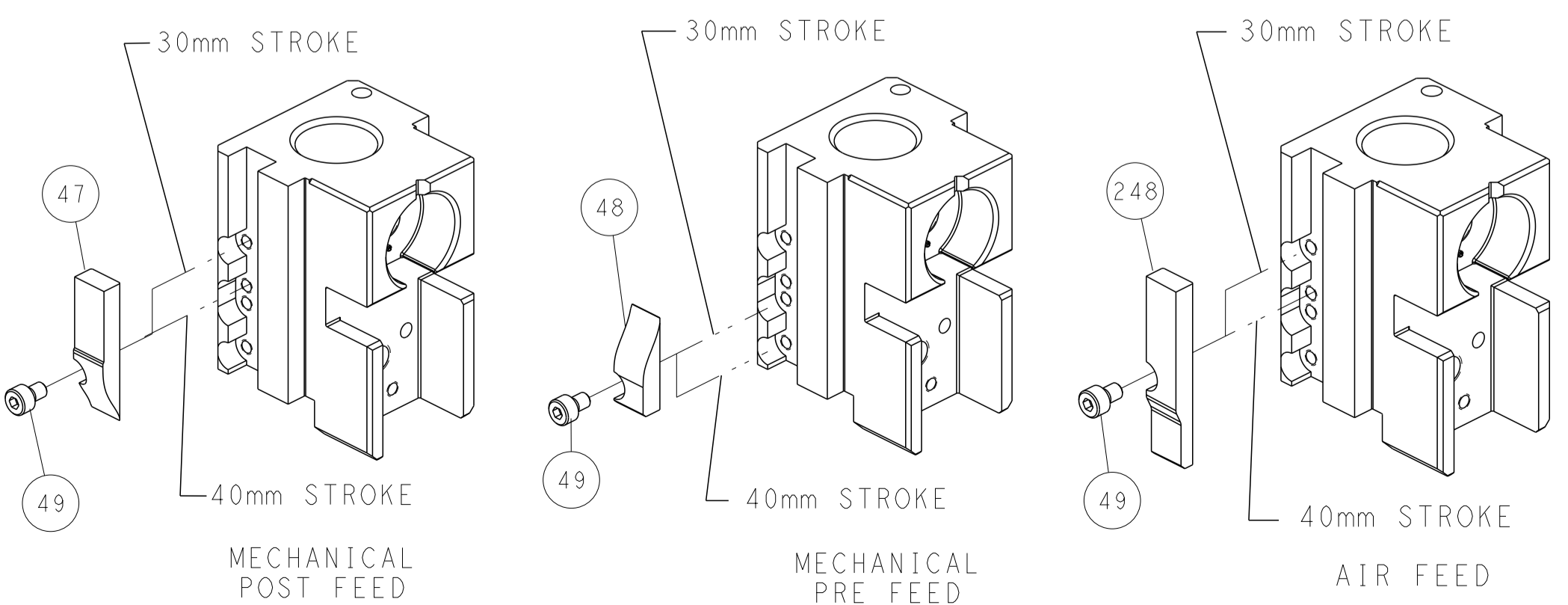
### PNEUMATIC



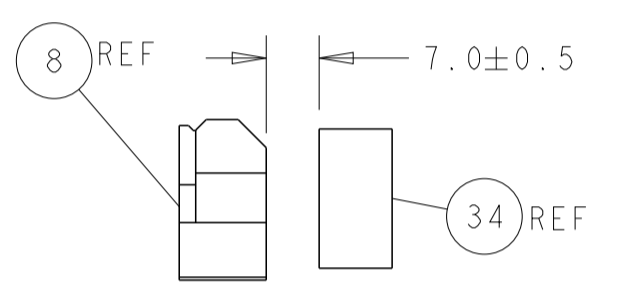
### SERVO LATCH PLATE



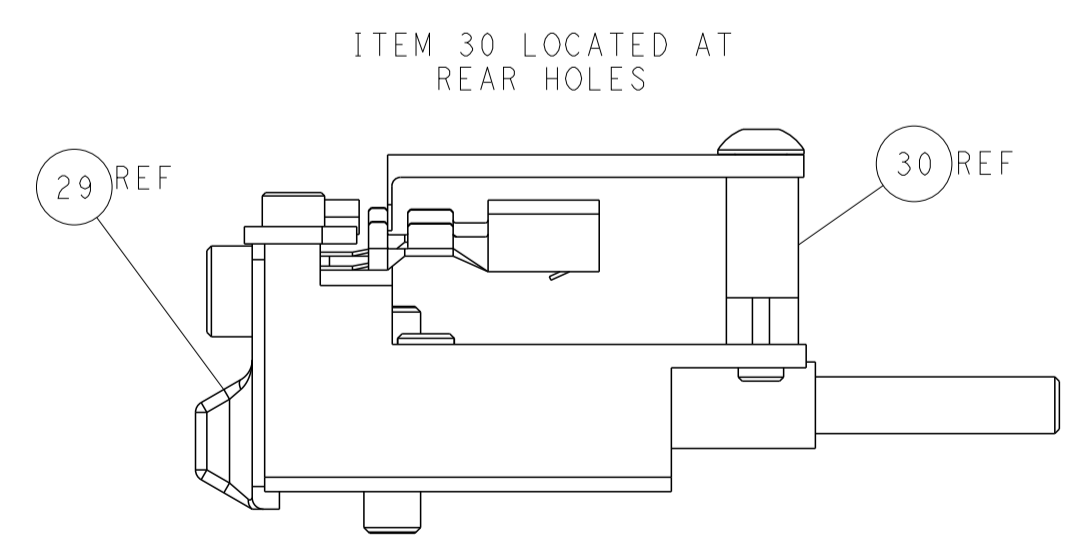
### CAM POSITIONS



SHEAR DEPRESSOR DETAIL



TERMINAL SUPPORT LOCATION



FEED TRACK POSITION GUIDE BY INSULATION BARREL

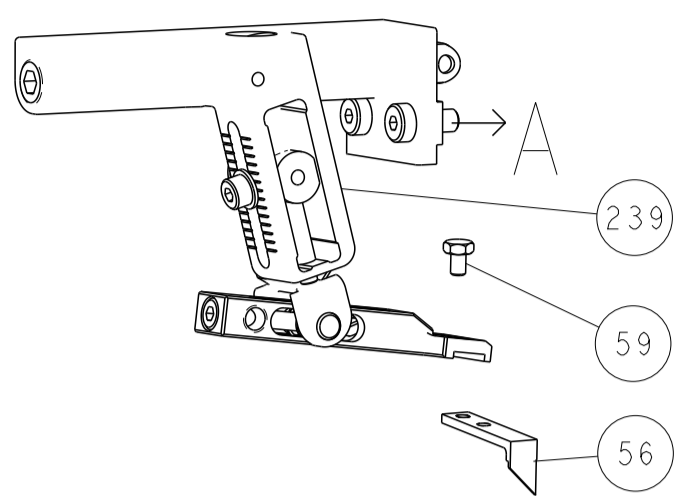
**ATLANTIC VERSION**  
 Shown on sheets 1 of 4 & 2 of 4  
 (Pacific version shown on sheets 3 of 4 & 4 of 4)

DIMENSIONS:		TOLERANCES UNLESS OTHERWISE SPECIFIED:		DWN	23MAR2015	TE Connectivity Harrisburg, PA 17105-3608
mm		0 PLC ±		CHK	23MAR2015	
		1 PLC ±		APVD	23MAR2015	NAME
		2 PLC ±				Ocean Side Feed
		3 PLC ±				Applicator
		4 PLC ±				
		ANGLES ±				SIZE
		FINISH ±				CAGE CODE
MATERIAL				WEIGHT		DRAWING NO
						A1 00779
				Customer Accessible Production Drawing		RESTRICTED TO
				SCALE		1:2
				SHEET		2 of 4
				REV		B

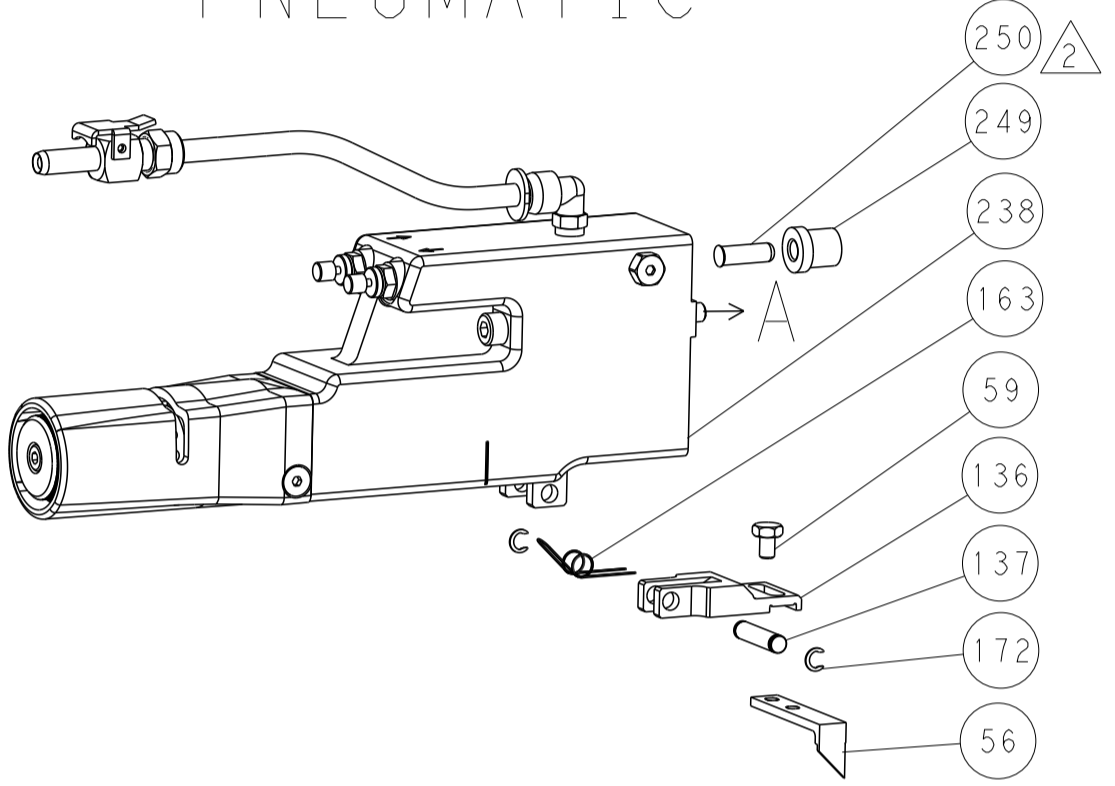


LOC	DIST	REVISIONS					
A	66	P	LTN	DESCRIPTION	DATE	OWN	APVD
		-		SEE SHEET 1			

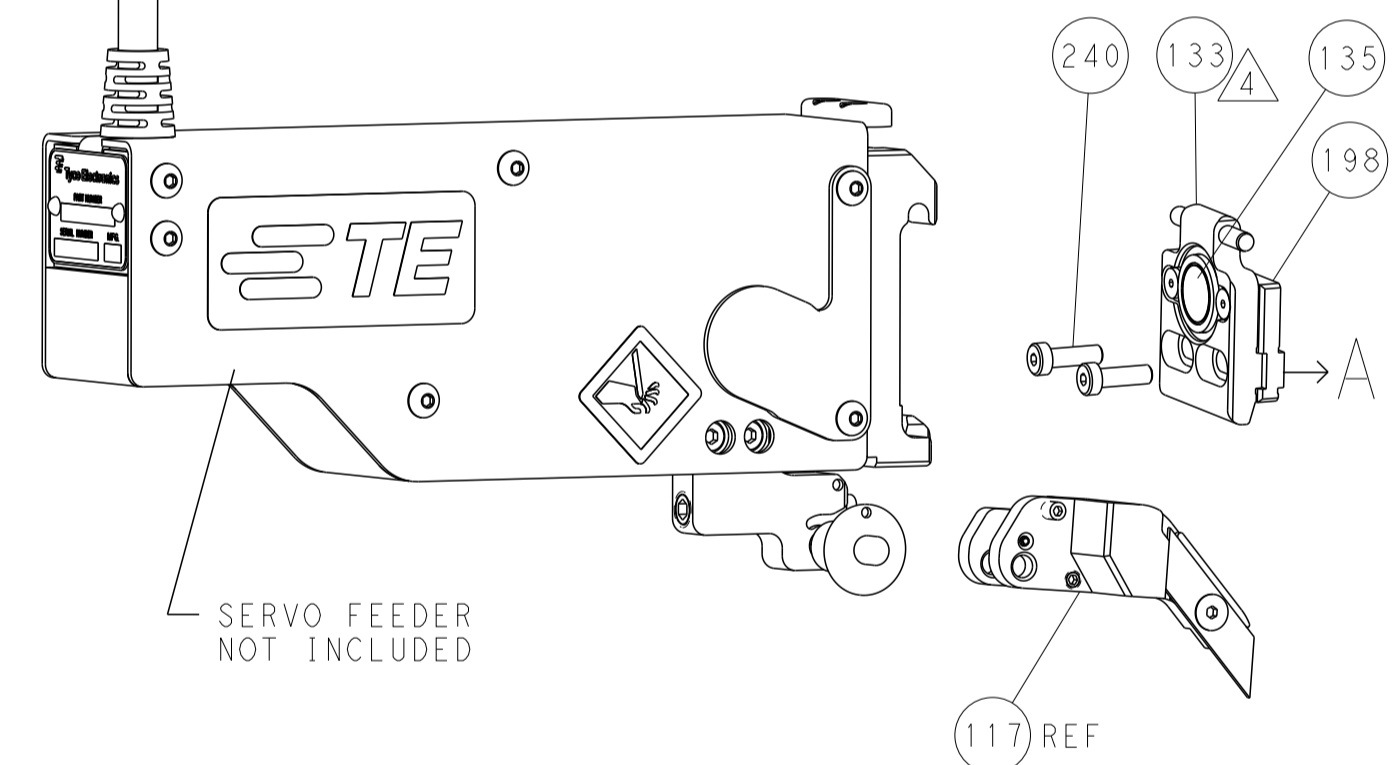
# FEED TYPE MECHANICAL



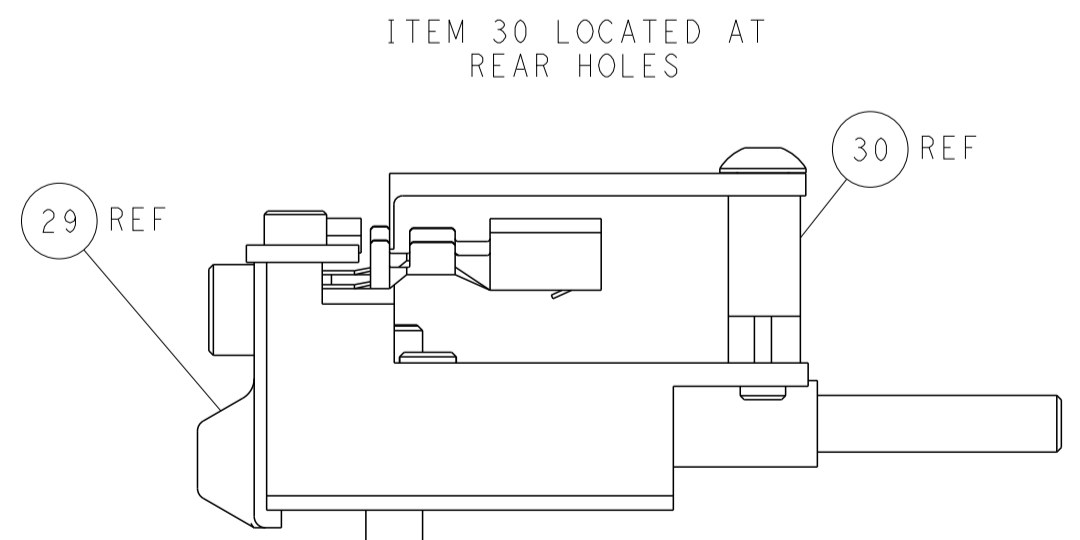
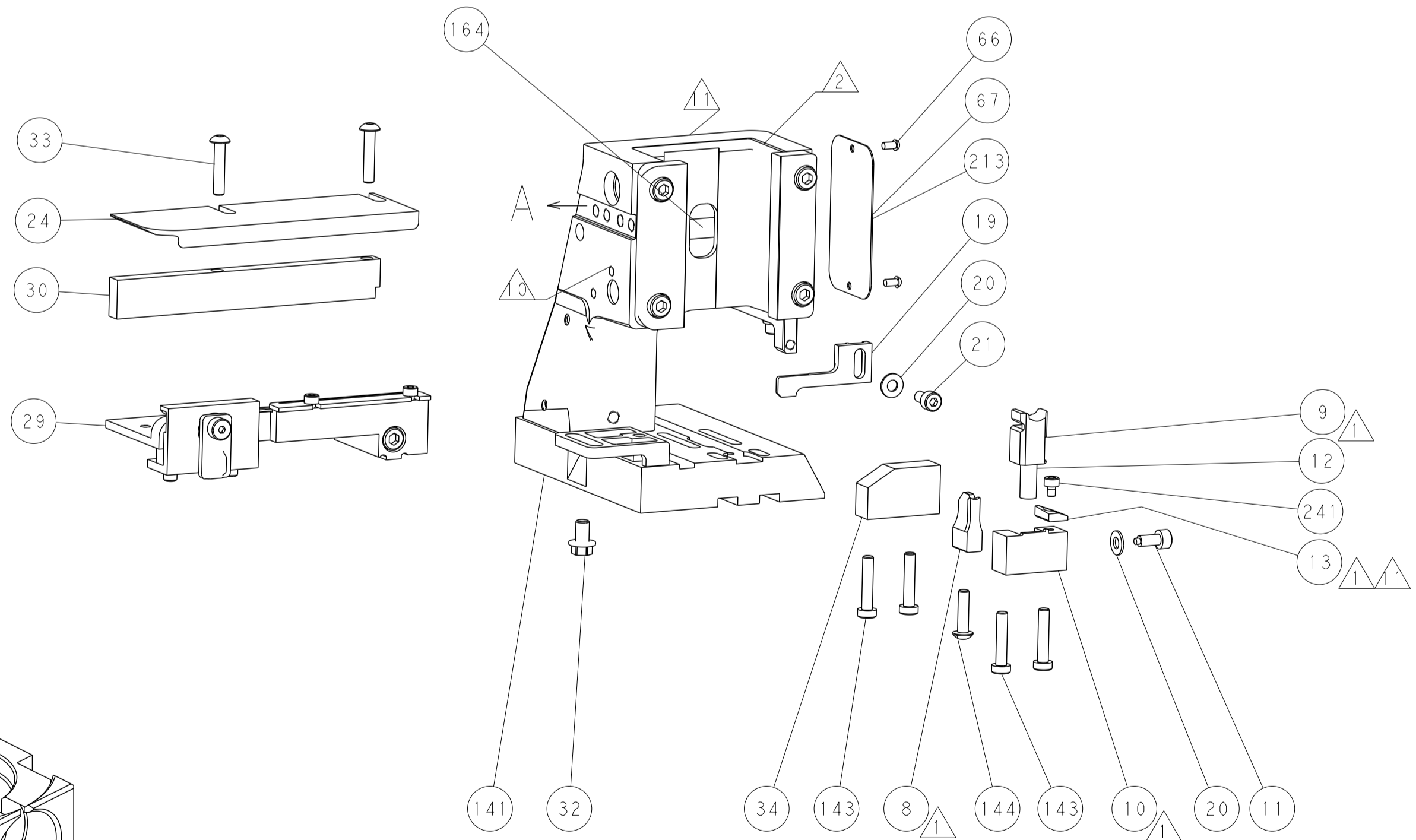
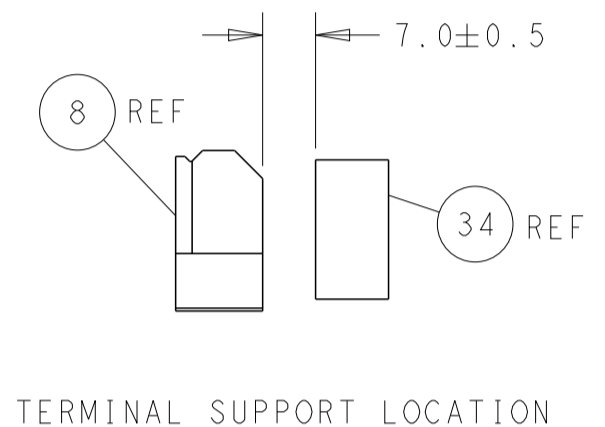
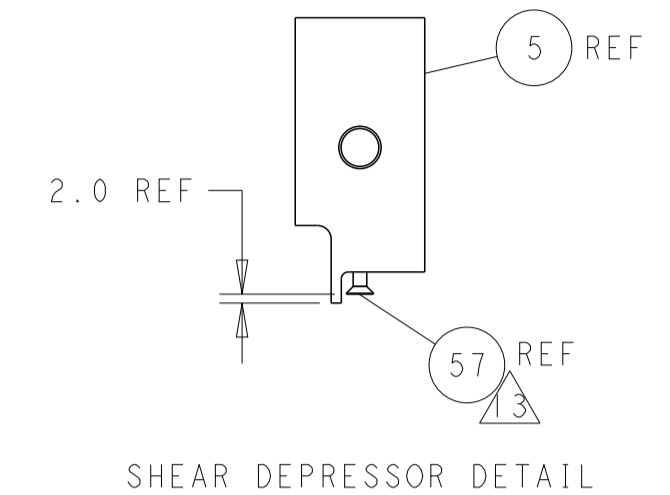
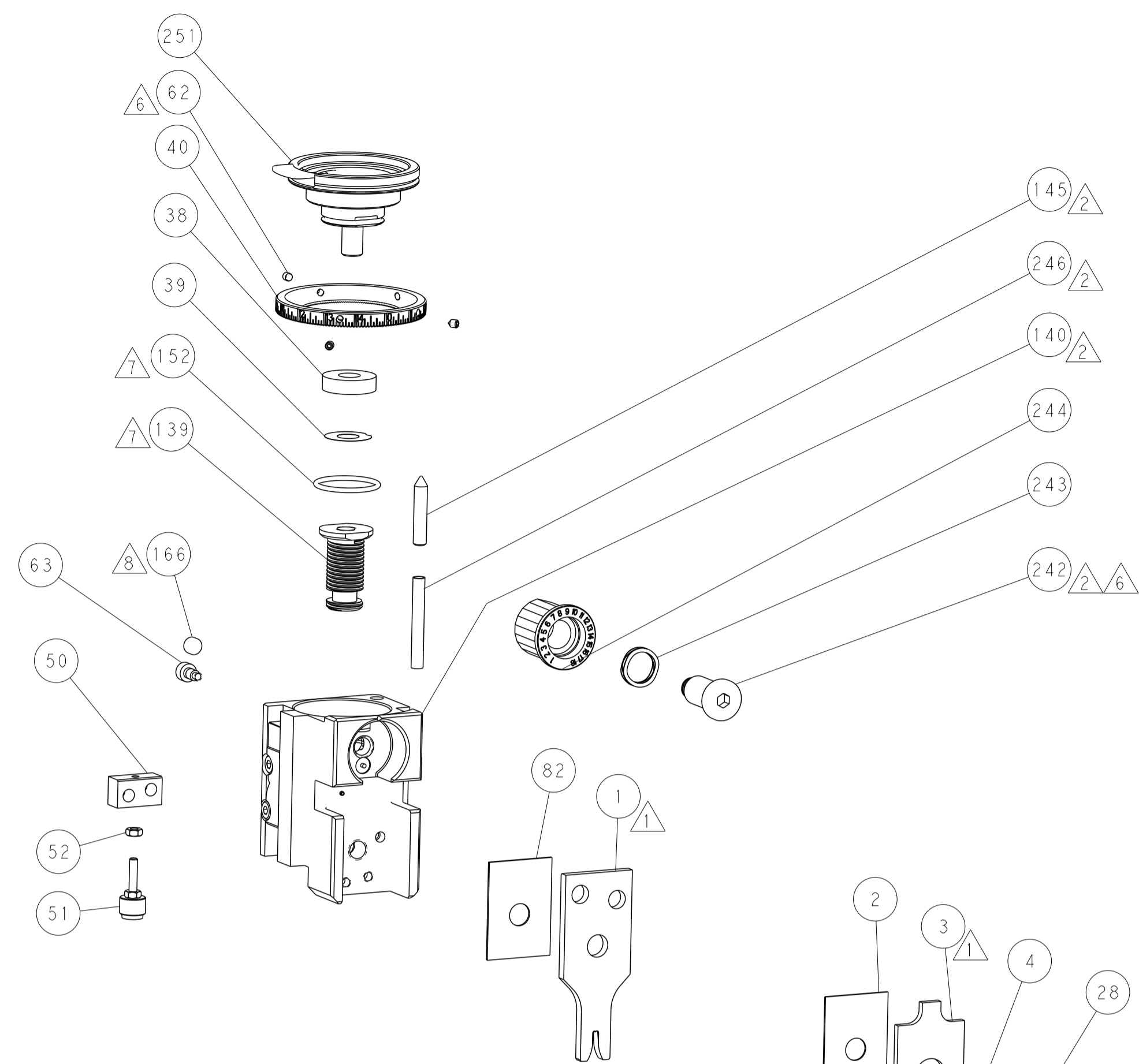
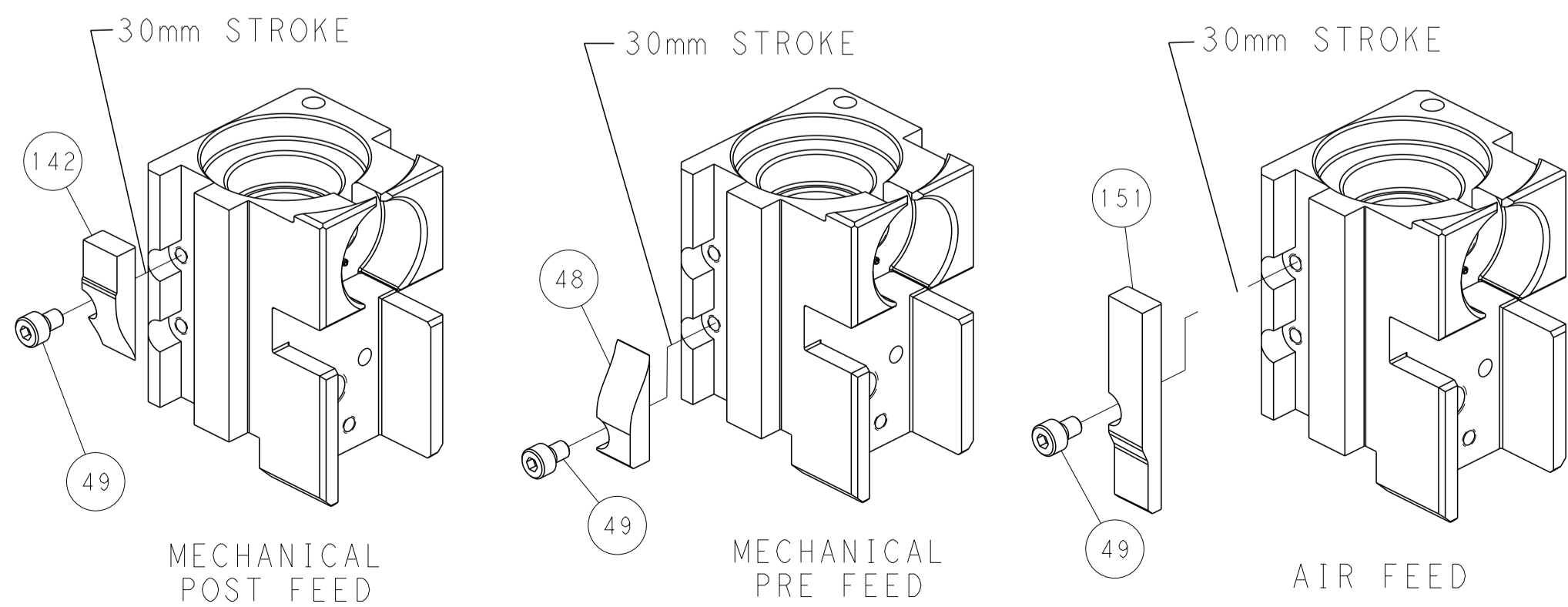
# PNEUMATIC



# SERVO LATCH PLATE



# CAM POSITIONS



**PACIFIC VERSION**  
 Shown on sheets 3 of 4 & 4 of 4  
 (Atlantic version shown on sheets 1 of 4 & 2 of 4)

DIMENSIONS:		TOLERANCES UNLESS OTHERWISE SPECIFIED:		DWG: H. HUANG 23MAR2015		CHK: L. ZHANG 23MAR2015		APVD: H. GUO 23MAR2015		NAME: Ocean Side Feed Applicator	
mm	0 PLC ±	1 PLC ±	2 PLC ±	3 PLC ±	4 PLC ±	ANGLES ±	FINISH	SIZE: A1	CAGE CODE: 00779	DRAWING NO: C=2266732	RESTRICTED TO: -
MATERIAL:								SCALE: 1:2	SHEET: 4	OF: 4	REV: B