

DR371-1 Series Radial Leaded Inductors

Features

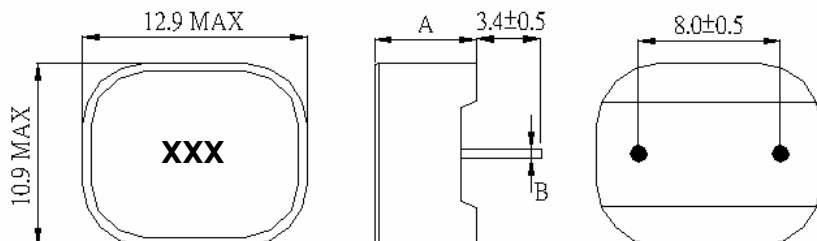
- High Current Rating
- Height: 10.5mm Max
- Inductance Range: 0.22 μ H – 4.7 μ H
- Operating Temperature -55°C to +125°C
- Non-RoHS Versions are Available (Note 5)



ELECTRICAL SPECIFICATIONS AT 25°C

Part Number	Inductance (μ H) 1V @ 100kHz, 0Adc	DCR (m Ω) Max.	Heating Current Idc (Note 3)	Saturating Current Idc (Note 4)
DR371-1-221	0.22	0.59	38	56
DR371-1-331	0.33	0.82	33	48
DR371-1-361	0.36	0.82	33	46
DR371-1-391	0.39	0.82	33	45
DR371-1-471	0.47	1.00	30	40
DR371-1-561	0.56	1.00	30	40
DR371-1-681	0.68	1.00	30	40
DR371-1-801	0.8	1.29	26	36
DR371-1-102	1.0	2.06	21	32
DR371-1-122	1.2	2.06	21	32
DR371-1-152	1.5	3.53	16	30
DR371-1-222	2.2	5.06	13.6	24
DR371-1-282	2.8	6.59	12.3	20
DR371-1-332	3.3	8.00	11.2	16
DR371-1-472	4.7	10.35	10	15

MECHANICAL SPECIFICATIONS



NOTES:

1. Dimensions are shown in inches/millimeters
2. Inductance tolerance: $\pm 20\%$
3. DC current that will cause a rise of 40°C from ambient
4. DC current causing a 30% drop in inductance
5. For non-RoHS parts replace DR prefix with 42- (e.g. DR371-1 becomes 42-371-1)
6. Terminal finish is compliant to RoHS requirements

Part Number	A	B
DR371-1-221	9.5 MAX	1.5 \pm 0.2
DR371-1-331	9.5 MAX	1.5 \pm 0.2
DR371-1-361	9.5 MAX	1.5 \pm 0.2
DR371-1-391	9.5 MAX	1.5 \pm 0.2
DR371-1-471	10.0 MAX	1.5 \pm 0.2
DR371-1-561	10.0 MAX	1.5 \pm 0.2
DR371-1-681	10.0 MAX	1.5 \pm 0.2
DR371-1-801	10.5 MAX	1.5 \pm 0.2
DR371-1-102	10.5 MAX	1.3 \pm 0.2
DR371-1-122	10.5 MAX	1.3 \pm 0.2
DR371-1-152	10.5 MAX	1.3 \pm 0.2
DR371-1-222	10.5 MAX	1.1 \pm 0.2
DR371-1-282	10.5 MAX	1.0 \pm 0.2
DR371-1-332	10.5 MAX	1.0 \pm 0.2
DR371-1-472	10.5 MAX	1.0 \pm 0.2