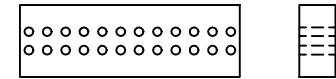


SCALE DRAWING 1:1

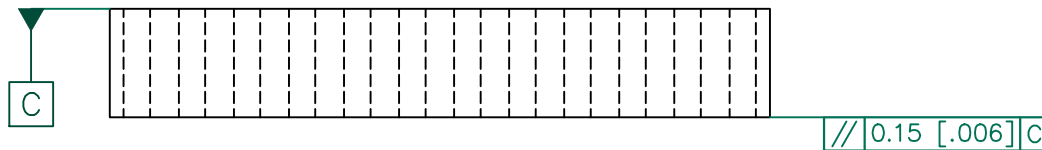
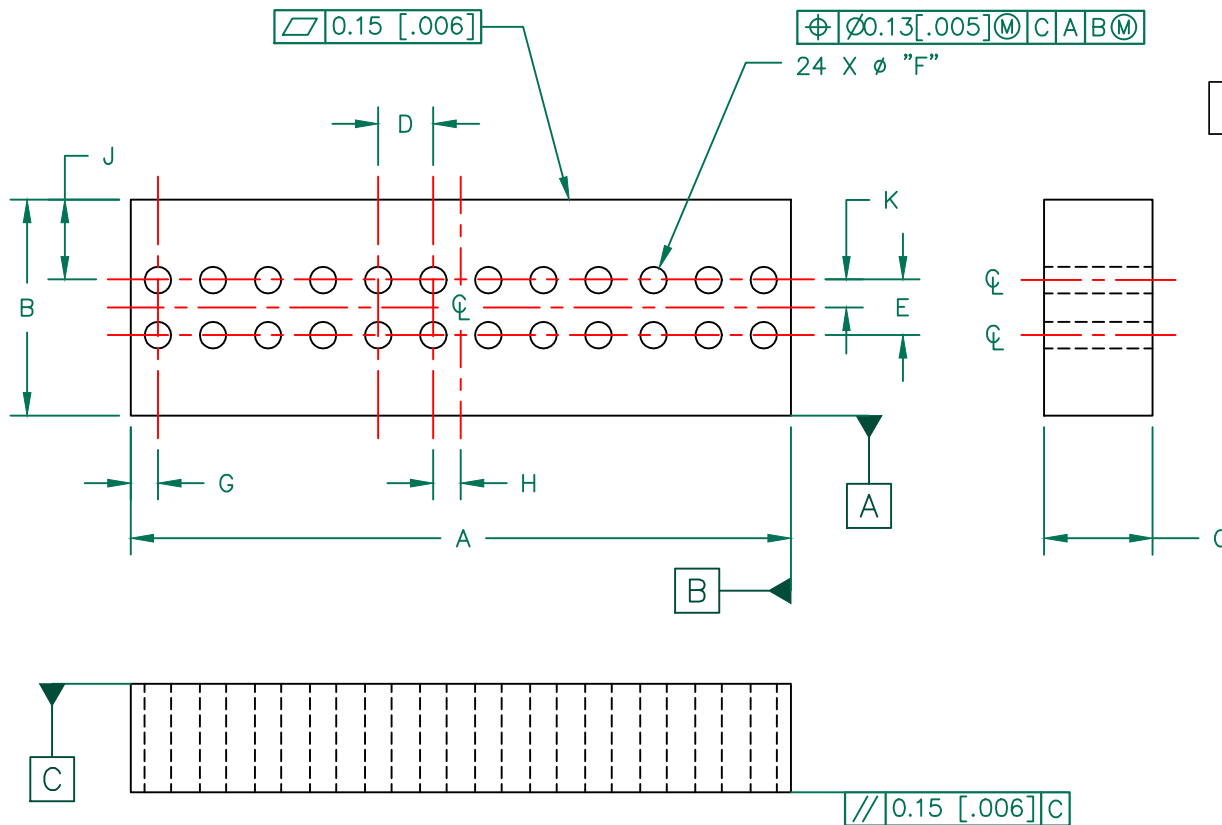


29D2416-000

RoHS

ELECTRICAL TESTING

TEST:	Z	Z
# TURNS	1	1
AWG	-	-
FREQUENCY	25 MHz	100 MHz
NOMINAL	40 Ω	63 Ω
MINIMUM	30 Ω	47 Ω
MAXIMUM	- Ω	79 Ω
WEIGHT/K	6.80 Kgs	15.0 Lbs



CORE DIMENSIONS:

∇ C	A	30.46 [1.199]	+	0.46 [.018]
∇ C	B	9.96 [.392]	+	0.15 [.006]
∇ C	C	5.00 [.197]	+	0.13 [.005]
	D	2.54 [.100]	+	0.10 [.004]
	E	2.54 [.100]	+	0.05 [.002]
∇ C	F	1.22 [.048]	+	0.05 [.002]
	G	1.26 [.050]	+	0.05 [.002]
	H	1.27 [.050]	+	0.05 [.002]
	J	3.71 [.146]	+	0.05 [.002]
	K	1.27 [.050]	+	0.05 [.002]

UNCONTROLLED DOCUMENT

NOTES: UNLESS OTHERWISE SPECIFIED

1. REFERENCE PREVIOUS STEWARD P/N 29B2416-000.
2. COSMETIC SPECIFICATION REFER TO WI-QA-038.

DIMENSIONS ARE IN mm [INCHES].				This print is the property of Laird Tech. and is loaned in confidence subject to return upon request and with the understanding that no copies shall be made without the written consent of Laird Tech. All rights to design or invention are reserved.			
K	UPDATE THE LOGO	06/19/15	QIU	PROJECT/PART NUMBER:	REV	PART TYPE:	DRAWN BY:
J	UPDATE LOGO, ADD KGS TO WGT	08/21/09	JRK	29D2416-000	K	CNZ CORE	JAZ
H	UPDATE PRINT FORMAT. ADD Z SPEC (MAX), & GEO TOL. REMOVE NOTE #1. REVISE NOTE #2, DIMENSIONS,	11/30/00	TMB	DATE:	SCALE:	MATERIAL:	
G	UPDATED PRINT. ADDED WARPAGE & BOW SYMBOLS & NOTES	05/13/97	BAC	06/02/94	3 : 1	FERRITE	
REV	DESCRIPTION	DATE	INT	CAD #	TOOL #		
				29D2416-000-K	D2416		

CRITICAL PARAMETER ∇ C