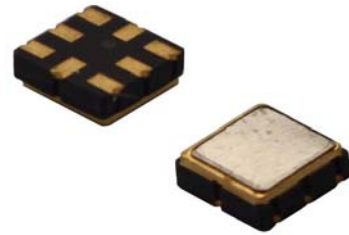


Application

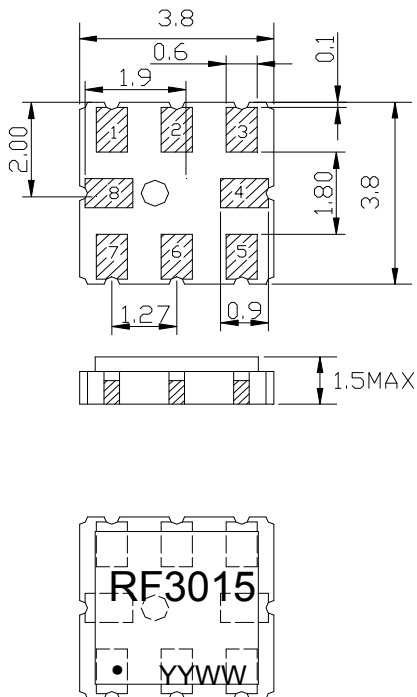
- Low-loss SAW component
- Low amplitude ripple
- Sharp rejections at both out-bands
- Usable passband 6.0 MHz



Features

- Ceramic Package for **Surface Mounted Technology (SMT)**
- **RoHS** compatible
- Package size 3.80x3.80x1.50mm³
- Package Code QCC8B
- **Electrostatic Sensitive Device(ESD)**

Package Dimensions (Unit: mm)



Pin Configuration

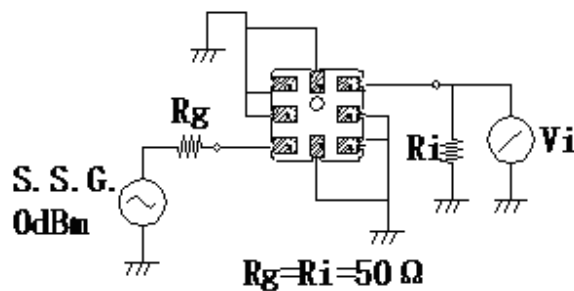
Pin No.	Description
5	Input
1	Output
2,3,6,7	To be Grounded
4,8	Case Ground

Marking Description

RF	R	Manufacturer
	F	SAW Filter
3015	Part Number	
●	Pin 1	
YYWW	Year Code & Week Code	

*Fig: If the products produced in 06th week of 2015, The year code & week code is 1506.

Test Circuit (Bottom View)



Performance**Maximum Rating**

Item		Value	Unit
DC Voltage	V_{DC}	3	V
Operation Temperature	T	-40 ~ +85	°C
Storage Temperature	T_{stg}	-55 ~ +125	°C
RF Power Dissipation	P	15	dBm

Electronic Characteristics

Test Temperature: $25^{\circ}\text{C} \pm 2^{\circ}\text{C}$

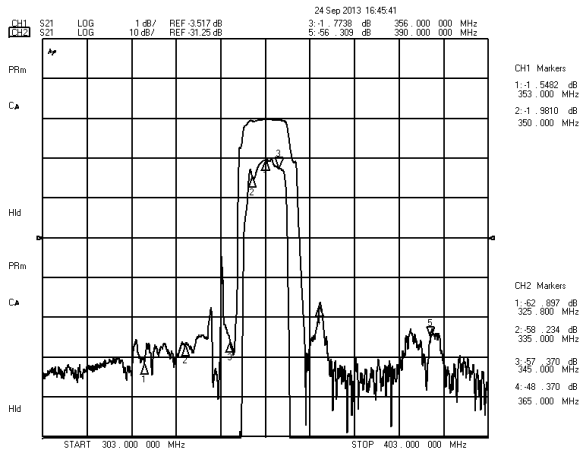
Terminating source impedance: 50Ω

Terminating load impedance: 50Ω

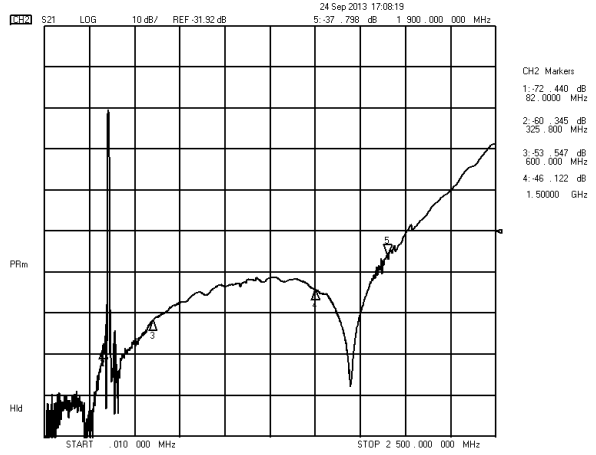
Item		Minimum	Typical	Maximum	Unit
Center Frequency	fc		353.00		MHz
Insertion Loss(min)	IL		1.6	2.5	dB
Insertion Loss	IL		2.1	3.0	dB
Amplitude Ripple (p-p)	Δa		0.5	1.0	dB
Group Delay Ripple			70.0	120.0	ns
Absolute Attenuation	a				
	DC - 82.00 MHz	50.0	65.0		dB
	82.00 - 325.80MHz	40.0	50.0		dB
	325.80-335.00MHz	45.0	55.0		dB
	335.00-345.00MHz	25.0	35.0		dB
	365.00-403.00MHz	35.0	45.0		dB
	403.00-600.00MHz	40.0	50.0		dB
	600.00-1500.00MHz	30.0	40.0		dB
	1500.00-1900.00MHz	25.0	35.0		dB
Input VSWR	350.00 - 356.00 MHz		1.7:1	2.0:1	
Output VSWR	350.00 - 356.00 MHz		1.7:1	2.0:1	

Frequency Characteristics

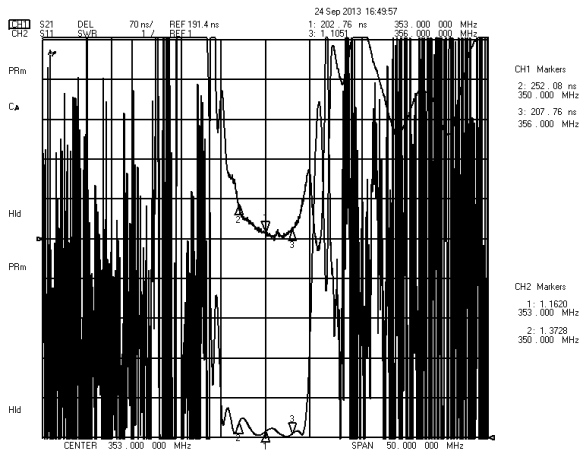
Frequency Response



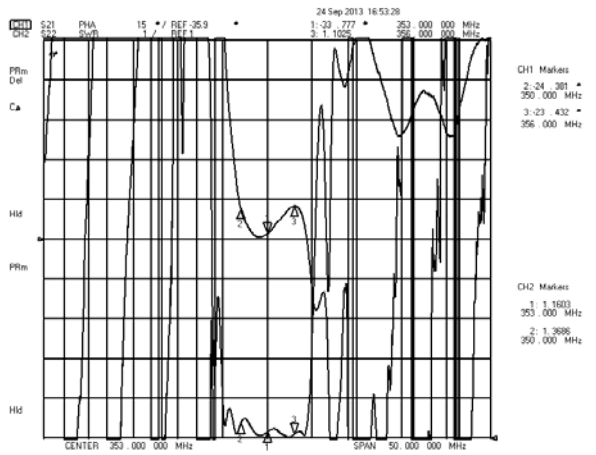
Frequency Response (wideband)



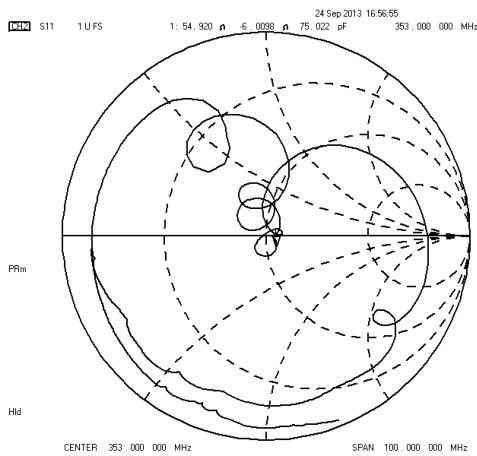
Delay Ripple & S11 VSWR



Phase Linearity & S22 VSWR



S11 Smith Chart



S22 Smith Chart

