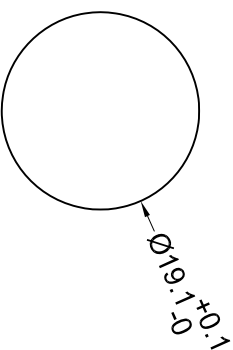
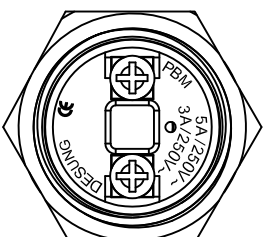
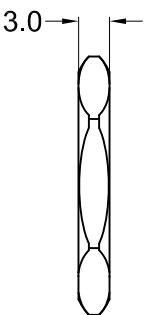
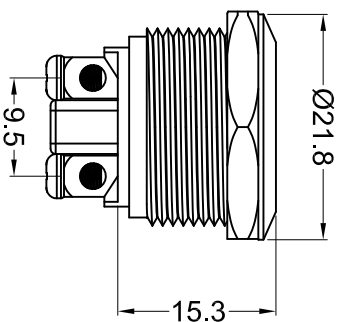
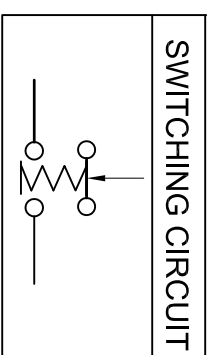


外壳绝缘D-SWITCH,
背面相对位置绝缘PBM



CUT OUT



Nut Torque: 5 ~ 14Nm
 Operating Pressure: 500gf ±150gf
 Operating Stroke: 1.8mm±0.3
 Protection Grade: IP65
 Function: (ON) -OFF
 Contact: Silver Alloy
 Base: PA66
 Shell: SUS
 Button: SUS
 Rating (Resistive load): 5A 250V AC
 Contact Resistance: 50mΩ MAX.
 Insulation Resistance: 100MΩ MIN.
 Dielectric Strength: 1500V AC 1 minute
 Electrical life: 50,000 cycles
 Mechanical life: 200,000 cycles
 Operating Temperature: -20°C~80°C
 Relative Air Humidity: 45%~85%
 Safety Approval:



东莞市德致电子有限公司
D-SWITCH ELECTRONICS CO.,LTD.

公差 TOLERANCES .X±0.5 .XX±0.3 角度 ANGLE ±1° 单位 DIMENSION UNIT mm.

版本 VER	变更说明 CHANGE DESCRIPTION	日期 DATE	ECON NO.	核准 APPROVED BY	核对 CHECKED BY	绘图 DRAWN BY	品名 TITLE	图号 DRAWING NO
				A0		孙成	PBM -19M11-FT-N-NN-S7L-A3	PBM -19M11-FT-N-NN-S7L-A3_A0