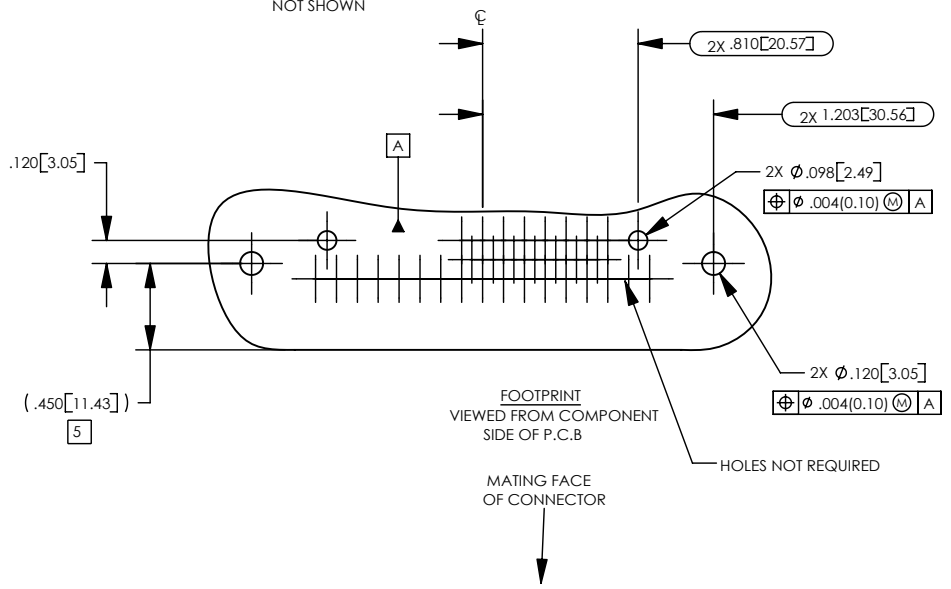
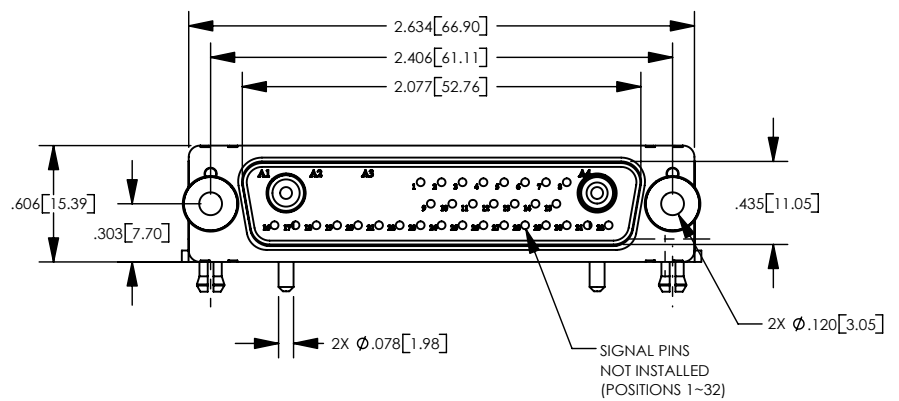
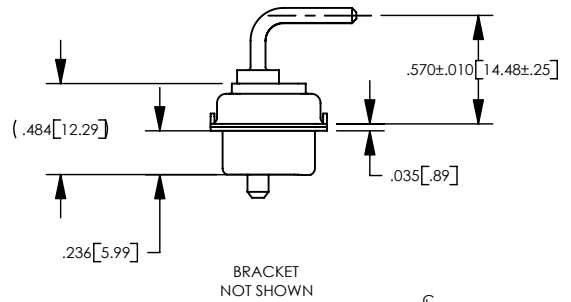
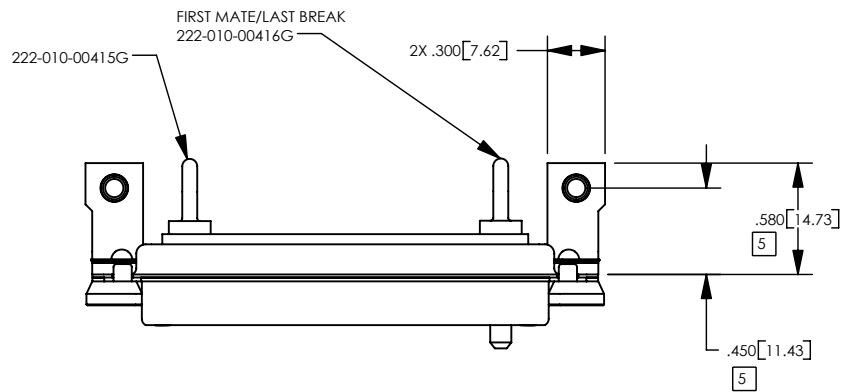


REV	DESCRIPTION	BY DATE	APPD
A	RELEASED PER ECR8036	JEM 02/10/04	JED
B	REDRAW PER ECR8988	COL 08/21/06	DW



NOTES: UNLESS OTHERWISE SPECIFIED  
 1. FOR GENERAL SERIES SPECIFICATIONS, SEE SD10-0000.

2. MATERIAL SPECIFICATIONS:  
 SHELLS: COLD ROLLED STEEL PER ASTM A568  
 INSULATORS: HIGH TEMPERATURE THERMOPLASTIC  
 BRACKETS: COLD ROLLED STEEL PER ASTM A620  
 CLINCH NUTS: BRASS PER ASTM B16  
 SNAP IN BOARDLOCKS: COPPER ALLOY

3. FINISH SPECIFICATIONS:  
 INSULATORS: BLACK  
 ALL OTHER METAL PARTS: YELLOW CHROMIUM OVER ZINC PER ASTM B633  
 SNAP IN BOARDLOCKS: TIN PLATE PER ASTM B545

4. FOR POWER CONTACT SPECIFICATIONS SEE CONTACT SALES DRAWINGS SD222-010-00415G & SD222-010-00416G.

5 FROM REAR OF D-SUB FLANGE.

PER ASME Y14.5M-1994  
 UNLESS OTHERWISE SPECIFIED:  
 DIMENSIONS ARE IN INCHES [MM]  
 TOLERANCES:  
 DECIMAL: XX ± .01 [0.3]  
 .XXX ± .005 [0.13]  
 .XXXX ± .XXXX  
 ANGLES: ± 2° SCALE: 1:1

**Winchester Electronics**  
 Winchester Electronics Corporation  
 62 Barnes Industrial Road North  
 Wallingford, Connecticut 06492

<b>CUSTOMER DRAWING</b>		RIGHT ANGLE 34W2P-D-SUB	
DRAWN JEM	DATE 11/25/03	APPROVED CWB	DATE 12/2/03
APPROVED JED	DATE 12/2/03	APPROVED MG	DATE 12/3/03

<b>A</b>	SDRM34W2P-1003	SHT 1 OF 1	REV <b>B</b>
----------	----------------	------------	--------------