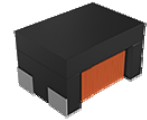


Wire Wound Chip Common Mode Choke Coil – AMCW-P Series

Operating Temp. : -40°C ~+150°C



FEATURES

- Winding type realizes small size and low profile
- Prevention of common mode noise at high frequency
- Excellent solderability
- AEC-Q200 verified

APPLICATIONS

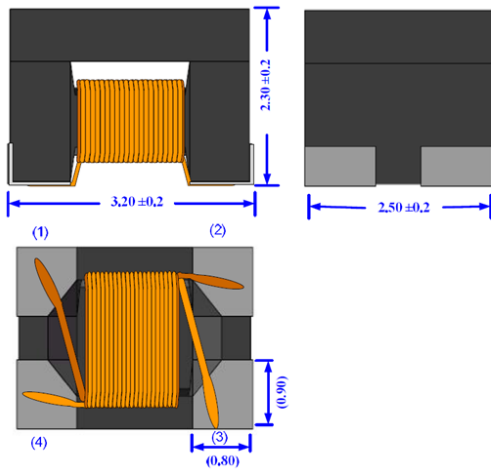
- Common mode noise filter for power line.

PRODUCT IDENTIFICATION

<u>AMCW</u> ①	<u>3225</u> ②	<u>P</u> ③	<u>-2</u> ④	<u>-242</u> ⑤	<u>T</u> ⑥	<u>S01</u> ⑦																																
①	②	③	④	⑤	⑥	⑦																																
<table border="1"> <tr><th colspan="2">Type</th></tr> <tr><td>AMCW</td><td>Winding Type Common Mode Choke Coil</td></tr> </table>	Type		AMCW	Winding Type Common Mode Choke Coil	<table border="1"> <tr><th colspan="2">External Dimensions (L×W) (mm)</th></tr> <tr><td>3225 [1210]</td><td>3.2×2.5</td></tr> </table>	External Dimensions (L×W) (mm)		3225 [1210]	3.2×2.5	<table border="1"> <tr><th colspan="2">Code</th></tr> <tr><td>P</td><td>for Power Line</td></tr> </table>	Code		P	for Power Line	<table border="1"> <tr><th colspan="2">Number of Lines</th></tr> <tr><td colspan="2">2</td></tr> </table>	Number of Lines		2		<table border="1"> <tr><th colspan="2">Nominal Impedance(Ω)</th></tr> <tr><th>Example</th><th>Nominal Value</th></tr> <tr><td>242</td><td>2400</td></tr> </table>	Nominal Impedance(Ω)		Example	Nominal Value	242	2400	<table border="1"> <tr><th colspan="2">Packing</th></tr> <tr><td>T</td><td>Tape & Reel</td></tr> </table>	Packing		T	Tape & Reel	<table border="1"> <tr><th colspan="2">Internal Code</th></tr> <tr><td colspan="2">S01</td></tr> </table>	Internal Code		S01			
Type																																						
AMCW	Winding Type Common Mode Choke Coil																																					
External Dimensions (L×W) (mm)																																						
3225 [1210]	3.2×2.5																																					
Code																																						
P	for Power Line																																					
Number of Lines																																						
2																																						
Nominal Impedance(Ω)																																						
Example	Nominal Value																																					
242	2400																																					
Packing																																						
T	Tape & Reel																																					
Internal Code																																						
S01																																						
①	②	③	④	⑤	⑥	⑦																																
<table border="1"> <tr><th colspan="2">Type</th></tr> <tr><td>AMCW</td><td>Winding Type Common Mode Choke Coil</td></tr> </table>	Type		AMCW	Winding Type Common Mode Choke Coil	<table border="1"> <tr><th colspan="2">External Dimensions (L×W) (mm)</th></tr> <tr><th>(L×W) (mm)</th><th>External Dimensions (L×W) (mm)</th></tr> <tr><td>4532[1812]</td><td>4.5×3.2</td></tr> </table>	External Dimensions (L×W) (mm)		(L×W) (mm)	External Dimensions (L×W) (mm)	4532[1812]	4.5×3.2	<table border="1"> <tr><th colspan="2">Code</th></tr> <tr><td>P</td><td>for Power Line</td></tr> </table>	Code		P	for Power Line	<table border="1"> <tr><th colspan="2">Number of Lines</th></tr> <tr><td colspan="2">2</td></tr> </table>	Number of Lines		2		<table border="1"> <tr><th colspan="2">Nominal Impedance(Ω)</th></tr> <tr><th>Example</th><th>Nominal Value</th></tr> <tr><td>701</td><td>700</td></tr> </table>	Nominal Impedance(Ω)		Example	Nominal Value	701	700	<table border="1"> <tr><th colspan="2">Packing</th></tr> <tr><td>T</td><td>Tape & Reel</td></tr> </table>	Packing		T	Tape & Reel	<table border="1"> <tr><th colspan="2">Internal Code</th></tr> <tr><td colspan="2">S01</td></tr> </table>	Internal Code		S01	
Type																																						
AMCW	Winding Type Common Mode Choke Coil																																					
External Dimensions (L×W) (mm)																																						
(L×W) (mm)	External Dimensions (L×W) (mm)																																					
4532[1812]	4.5×3.2																																					
Code																																						
P	for Power Line																																					
Number of Lines																																						
2																																						
Nominal Impedance(Ω)																																						
Example	Nominal Value																																					
701	700																																					
Packing																																						
T	Tape & Reel																																					
Internal Code																																						
S01																																						

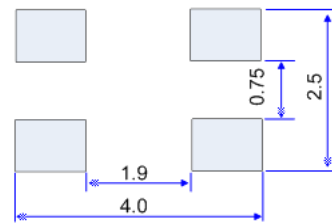
SHAPE AND DIMENSIONS

AMCW3225P TYPE

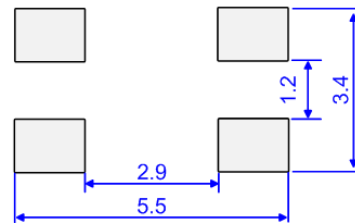
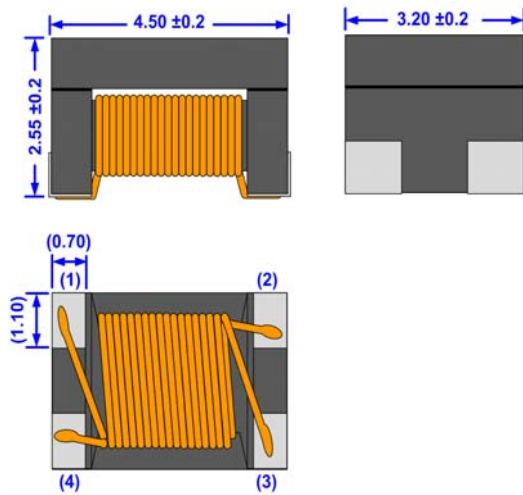


Recommended Land Pattern

Unit: mm



AMCW4532P TYPE



SPECIFICATIONS

AMCW3225P TYPE

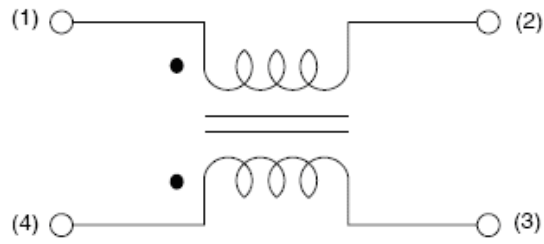
Part Number	Common Mode Impedance@100MHz	DC Resistance	Rated Current	Rated Voltage	Insulation Resistance
	±25%	Max.	Max.	Max.	Min.
Units	Ω	Ω	mA	Volts	M Ω
Symbol	$ Z $	DCR	I _{rms}	V _{DC}	IR
AMCW3225P-2-242TS01	2400	0.3	640	50	10

AMCW4532P TYPE

Part Number	Common Mode Impedance@100MHz	DC Resistance	Rated Current	Rated Voltage	Insulation Resistance
	±25%	Max.	Max.	Max.	Min.
Units	Ω	Ω	mA	Volts	M Ω
Symbol	$ Z $	DCR	I _{rms}	V _{DC}	IR
AMCW4532P-2-701T	700	0.15	1000	50	10

※: Products with other electrical characteristics can be provided upon customer's request. Please contact your local sales.

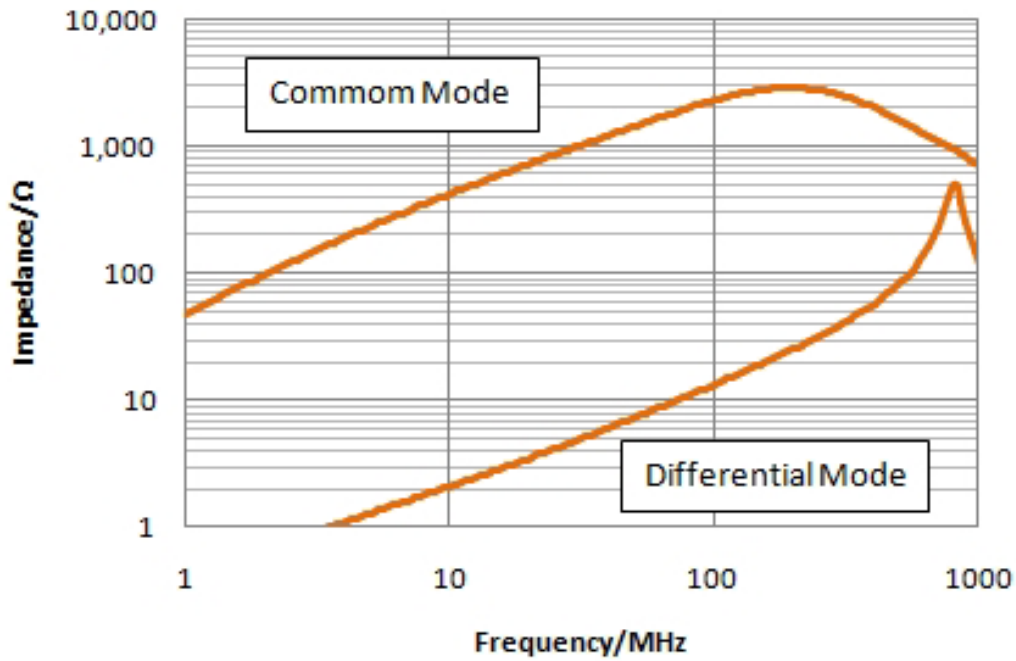
EQUIVALENT CIRCUIT



TYPICAL ELECTRICAL CHARACTERISTICS

Impedance vs. Frequency

AMCW3225P TYPE



TYPICAL ELECTRICAL CHARACTERISTICS

Impedance vs. Frequency

AMCW4532P TYPE

