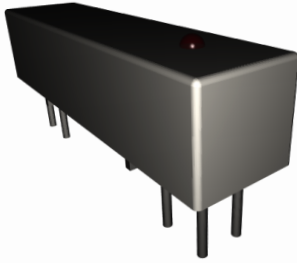


20D FormC Series

PCB Mount



PRODUCT DESCRIPTIONS

The 20D-1C Series comes in Form C configuration, and has been on the market for more than 25 years. This series is available with different electrical performances tuned to your specific requirements.

If you are looking for a product not listed in our catalog, please contact our sales engineers for more details.

SPECIFICATIONS



20D FormC Series		20D-1C□1)2□2)1			PCB Mount
Parameters	Units	1 Form C			Test Conditions
Coil Specifications					
Nominal Coil Voltage	VDC	5.0	12.0	24.0	±10% @ 20°C 15°C to 35°C 15°C to 35°C
Coil Resistance	Ω	120	600	1800	
Operate Voltage	VDC Max	3.2	7.8	18.4	
Release Voltage	VDC Min	0.7	1.2	2.4	
Contact Ratings					
Switching Voltage	Volts	100			Max DC/Peak AC resistance
Switching Current	Amps	0.2			Max DC/Peak AC resistance
Carry Current	Amps	0.5			Max DC/Peak AC resistance
Contact Rating	Watts	3			Max DC/Peak AC resistance
Life Expectancy	x10 ⁶ Cycle	50			@ 1V 10mA
Contact Resistance	mΩ	150			Max initial @ operate voltage
Contact Resistance Stability	mΩ	5.0			Max initial @ operate voltage
Relay Specifications					
Insulation Resistance	Ω Min	10 ¹¹			Between all isolated pins @ 100V 20°C 40%RH
Dielectric Strength	VDC Min	200			Between contacts
	VDC Min	500			Contacts to shield
	VDC Min	500			Contacts/Shield to coil
Operate Time (Including Bounce)	msec Max	1.5			@ nominal coil voltage
Release Time	msec Max	2.0			100Hz square wave Diode suppression
Environmental Ratings					
Measurement Reference Conditions		Storage temp: -40°C to +85°C			
Temp: 15°C to 35°C		Operate temp: -20°C to +80°C			
Humidity: 25% to 75%RH		Vibration: 20G's to 2000Hz			
Atmospheric Pressure: 860 to 1060hpa		Shock: 50G's			

Ordering Code:

20D-1C□1)2□2)1

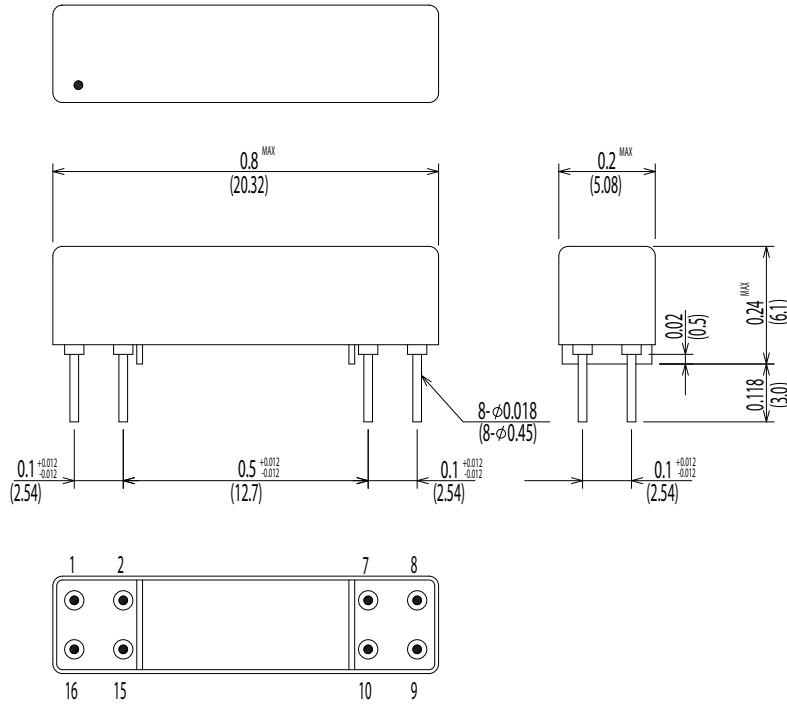
□1)=1 (5.0VDC), 2 (12.0VDC), 3 (24.0VDC)

□2)= D (Diode), E (LED), N (No diode)

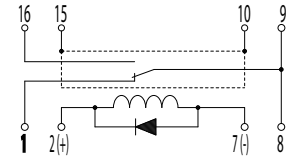
Dimensions All Dimensions are inches (mm)

Schematic <Top View>

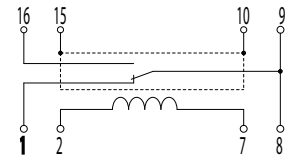
20D-1C□2D1 / 20D-1C□2N1



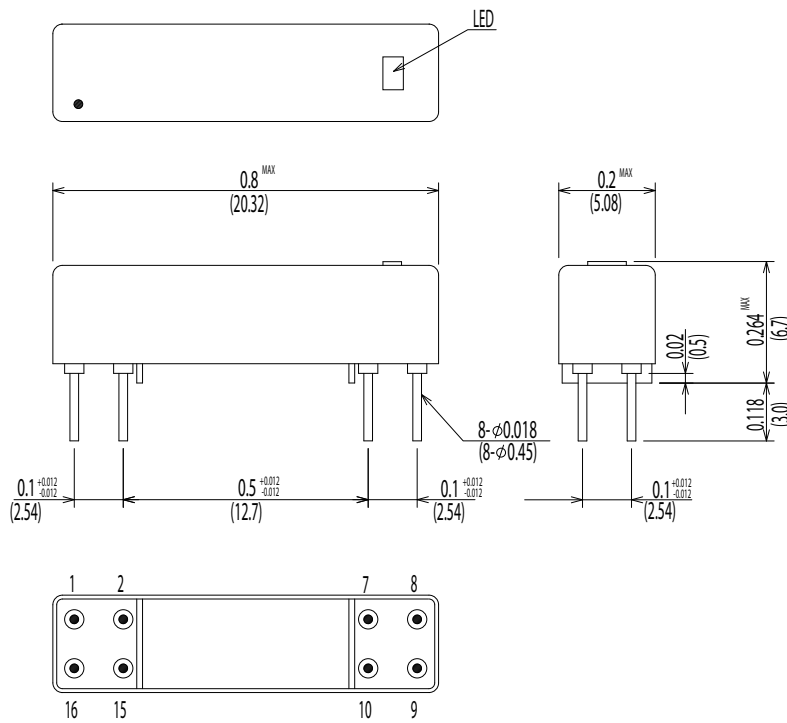
20D-1C□2D1



20D-1C□2N1



20D-1C□2E1



20D-1C□2E1

