

# Coaxial Frequency Mixer

## ZMX-7GR

Level 7 (LO Power +7 dBm) 3700 to 7000 MHz



CASE STYLE: BU413

Connectors	Model
SMA	ZMX-7GR

### Maximum Ratings

Operating Temperature	-55°C to 100°C
Storage Temperature	-55°C to 100°C
RF Power	50mW
IF Current	40mA

Permanent damage may occur if any of these limits are exceeded.

### Coaxial Connections

LO	2
RF	1
IF	3

### Features

- wide frequency range, 3700 to 7000 MHz
- low conversion loss, 5.0 dB typ.
- high L-I isolation, 36 dB typ.

### Applications

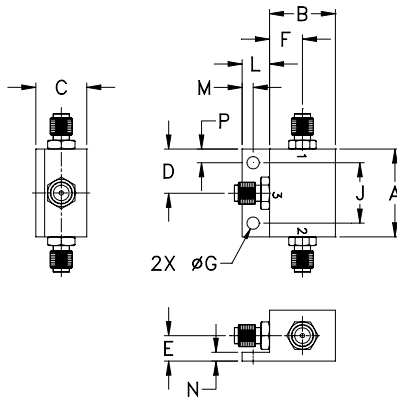
- SATCOM
- instrumentation
- defense & federal communications
- SHF

### Electrical Specifications

FREQUENCY (MHz)	CONVERSION LOSS (dB)	LO-RF ISOLATION (dB)		LO-IF ISOLATION (dB)	
		Typ.	Min.	Typ.	Min.
3700-7000	5.0	30	20	36	20

1 dB COMP.: +1 dBm typ.

### Outline Drawing



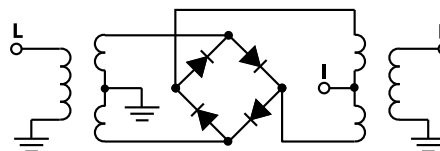
### Outline Dimensions (inch/mm)

A	B	C	D	E	F	G	H
1.00	.75	.58	.50	.29	.38	.140	--
25.40	19.05	14.73	12.70	7.37	9.65	3.56	--
J	K	L	M	N	P	wt	
.687	--	.32	.13	.10	.16	grams	
17.45	--	8.13	3.30	2.54	4.06	25.0	

### Typical Performance Data

Frequency (MHz)		Conversion Loss (dB)	Isolation L-R (dB)	Isolation L-I (dB)	VSWR RF Port (:1)	VSWR LO Port (:1)
RF	LO	LO +7dBm	LO +7dBm	LO +7dBm	LO +7dBm	LO +7dBm
3700.00	3730.00	4.25	30.50	25.89	1.09	1.23
3949.06	3979.06	4.38	29.45	27.95	1.94	1.29
4000.00	4030.00	4.40	29.82	28.13	2.21	1.34
4198.11	4228.11	4.74	31.47	29.71	3.01	1.41
4447.17	4477.17	5.21	32.54	31.21	3.28	1.35
4633.96	4663.96	5.53	30.64	31.84	3.09	1.27
4820.75	4850.75	5.68	30.03	32.73	2.74	1.28
5000.00	4970.00	5.69	30.38	33.91	2.70	1.20
5194.34	5164.34	5.73	30.78	34.92	2.98	1.15
5443.40	5413.40	5.81	30.19	35.19	3.32	1.09
5692.45	5662.45	5.95	30.25	35.33	3.76	1.13
5879.25	5849.25	5.99	30.83	35.33	4.12	1.16
6000.00	5970.00	6.26	30.52	35.10	4.29	1.16
6128.30	6098.30	6.57	30.24	34.77	4.77	1.12
6252.83	6222.83	6.64	29.94	34.14	4.76	1.13
6377.36	6347.36	6.72	29.71	33.58	4.82	1.18
6501.89	6471.89	6.68	29.55	32.81	4.73	1.20
6626.42	6596.42	6.58	29.56	32.09	4.74	1.19
6875.47	6845.47	6.29	28.82	30.49	4.41	1.07
7000.00	6970.00	6.26	28.55	29.90	4.17	1.13

### Electrical Schematic



**Mini-Circuits**  
ISO 9001 ISO 14001 AS 9100 CERTIFIED

P.O. Box 350166, Brooklyn, New York 11235-0003 (718) 934-4500 Fax (718) 332-4661 The Design Engineers Search Engine [www.minicircuits.com](http://www.minicircuits.com) Provides ACTUAL Data Instantly at [minicircuits.com](http://www.minicircuits.com)

IF/RF MICROWAVE COMPONENTS

For detailed performance specs & shopping online see web site

Notes: 1. Performance and quality attributes and conditions not expressly stated in this specification sheet are intended to be excluded and do not form a part of this specification sheet. 2. Electrical specifications and performance data contained herein are based on Mini-Circuit's applicable established test performance criteria and measurement instructions. 3. The parts covered by this specification sheet are subject to Mini-Circuit's standard limited warranty and terms and conditions (collectively, "Standard Terms"); Purchasers of this part are entitled to the rights and benefits contained therein. For a full statement of the Standard Terms and the exclusive rights and remedies thereunder, please visit Mini-Circuit's website at [www.minicircuits.com/MCLStore/terms.jsp](http://www.minicircuits.com/MCLStore/terms.jsp).

REV. A  
M151107  
ZMX-7GR  
ED-3937/1  
DJ/TD/CP/AM  
151009  
Page 1 of 2

