

# Customer Information Sheet

DRAWING No.: M50-315XX42R

IF IN DOUBT - ASK

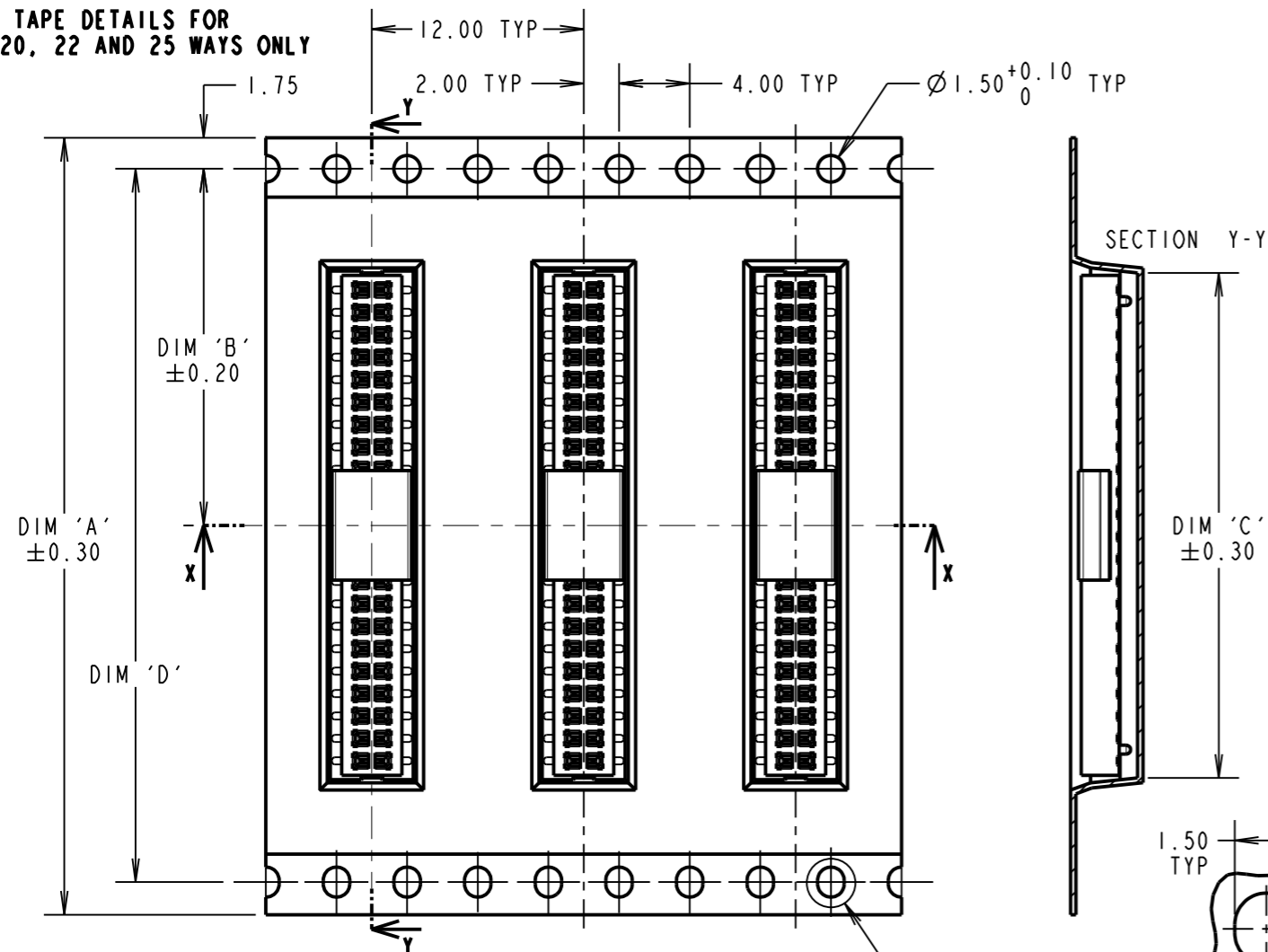
©

NOT TO SCALE

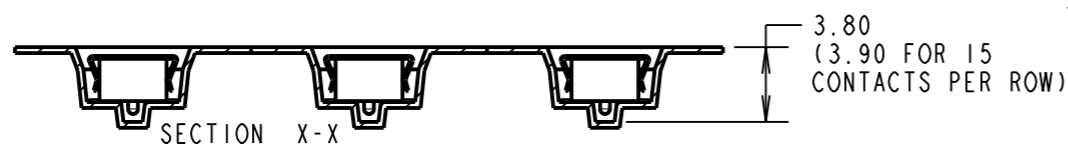
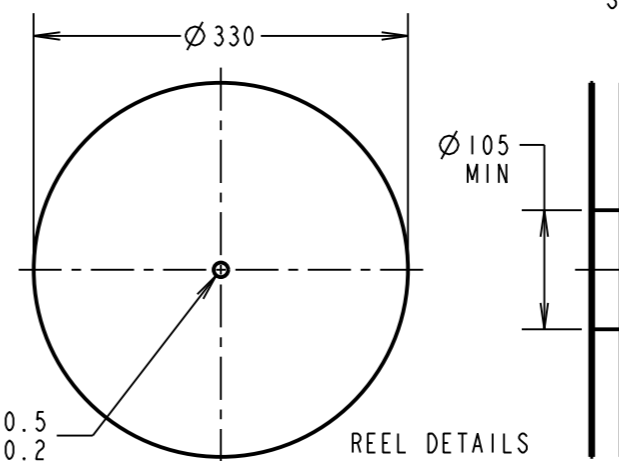
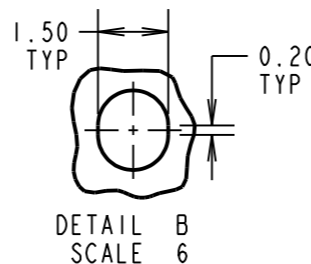
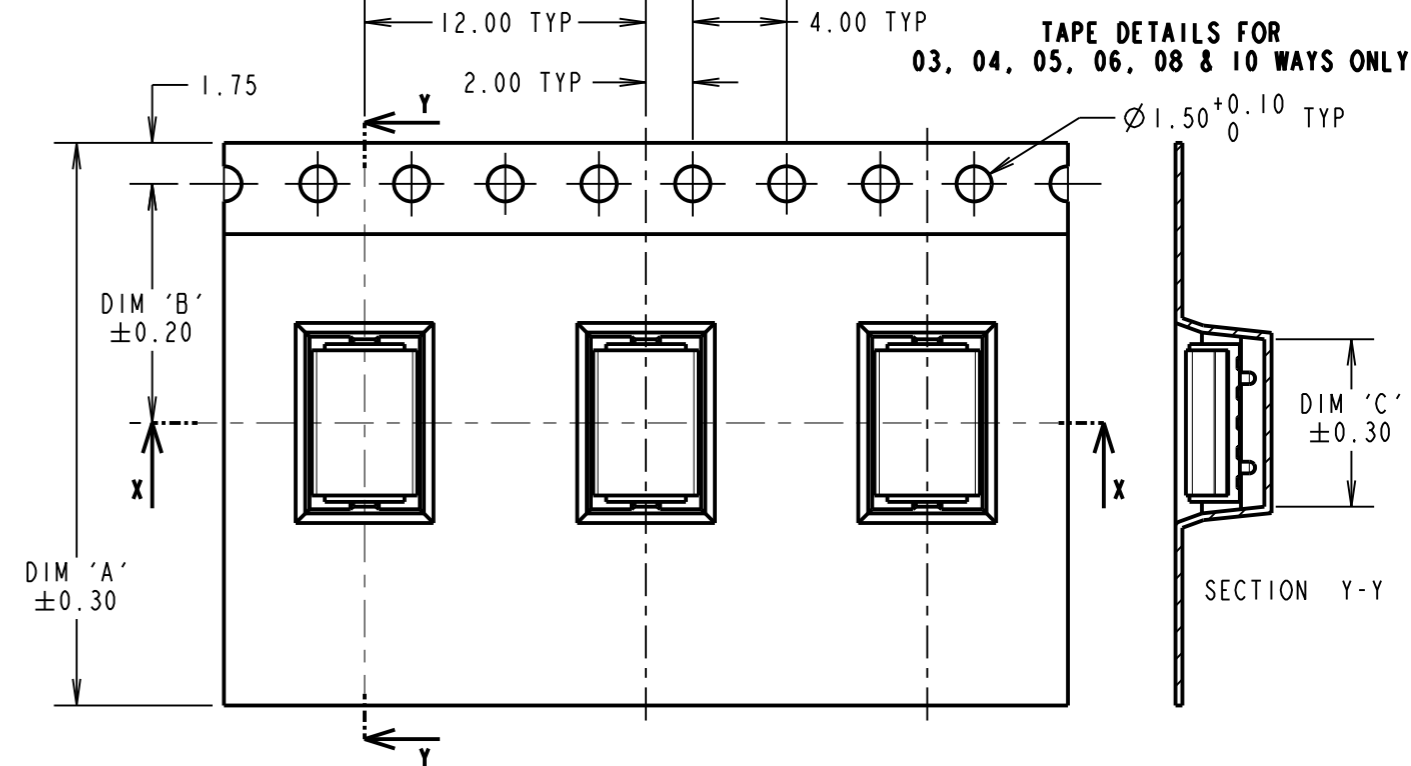
THIRD ANGLE PROJECTION

ALL DIMENSIONS IN mm

**TAPE DETAILS FOR  
15, 20, 22 AND 25 WAYS ONLY**



**TAPE DETAILS FOR  
03, 04, 05, 06, 08 & 10 WAYS ONLY**

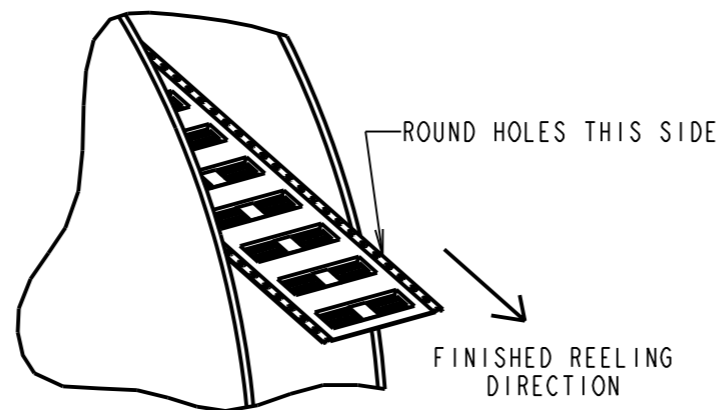


ORDER CODE: **M50-315XX42R**

No. OF CONTACTS PER ROW:  
03, 04, 05, 06, 08,  
10, 15, 20, 22, 25

FINISH:  
42 = GOLD FLASH + 100% TIN OVER NICKEL

REELED PART No.	DIM 'A'	DIM 'B'	DIM 'C'	DIM 'D'	PACK SIZE
M50-3150342R	16.00	7.50	4.55	N/A	1400
M50-3150442R			5.78		
M50-3150542R			7.15		
M50-3150642R	24.00	10.20	8.30	N/A	1300
M50-3150842R			11.50		
M50-3151042R			13.40		
M50-3151542R	32.00	14.20	20.10	28.40	1400
M50-3152042R	44.00	20.20	26.10	40.40	1300
M50-3152242R			28.60		
M50-3152542R			32.45		



- NOTES:
- PRODUCT IS TAPE AND REELED IN GENERAL ACCORDANCE WITH EIA-481 (ELECTRONIC INDUSTRIES ASSOCIATION).
  - CUMULATIVE TOLERANCE OVER 10 PITCHES =  $\pm 0.20$ mm
  - FOR CONNECTOR DETAILS AND SPECIFICATIONS SEE SHEET 4.

MSP	10	17.08.17	20750
NAME	ISS.	DATE	C/NOTE
APPROVED: M.PERREN			
CHECKED: M.PLESTED			
DRAWN: R.ADDE			
CUSTOMER REF.:			
ASSEMBLY DRG:			

**HARWIN**

www.harwin.com  
technical@harwin.com

THIS DRAWING AND ANY INFORMATION OR DESCRIPTIVE MATTER SET OUT HEREON ARE CONFIDENTIAL AND COPYRIGHT PROPERTY OF THE HARWIN GROUP AND MUST NOT BE DISCLOSED, LOANED, COPIED OR USED FOR MANUFACTURING, TENDERING OR FOR ANY OTHER PURPOSE WITHOUT THEIR WRITTEN PERMISSION.

TOLERANCES  
X. =  $\pm 1$ mm  
X.X =  $\pm 0.25$ mm  
X.XX =  $\pm 0.10$ mm  
X.XXX =  $\pm 0.01$ mm  
ANGLES =  $\pm 5^\circ$   
UNLESS STATED

MATERIAL:  
SEE SHEET 4  
FINISH: SEE ABOVE  
S/AREA: mm<sup>2</sup>

TITLE: 1.27mm PITCH DIL SMT VERT  
LOW PROFILE SOCKET ASSY  
(TAPE & REEL)

DRAWING NUMBER: **M50-315XX42R**  
SHT 3 OF 4

# Customer Information Sheet

DRAWING No.: M50-315XX42R

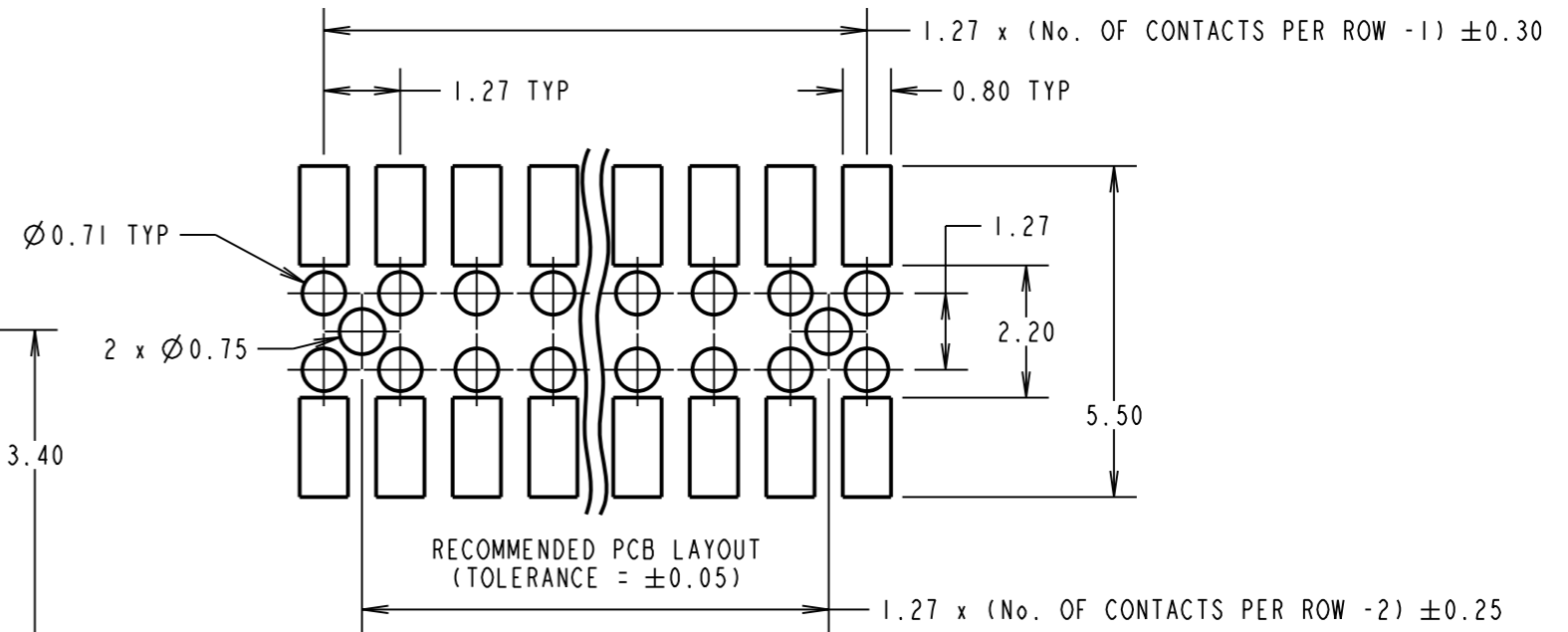
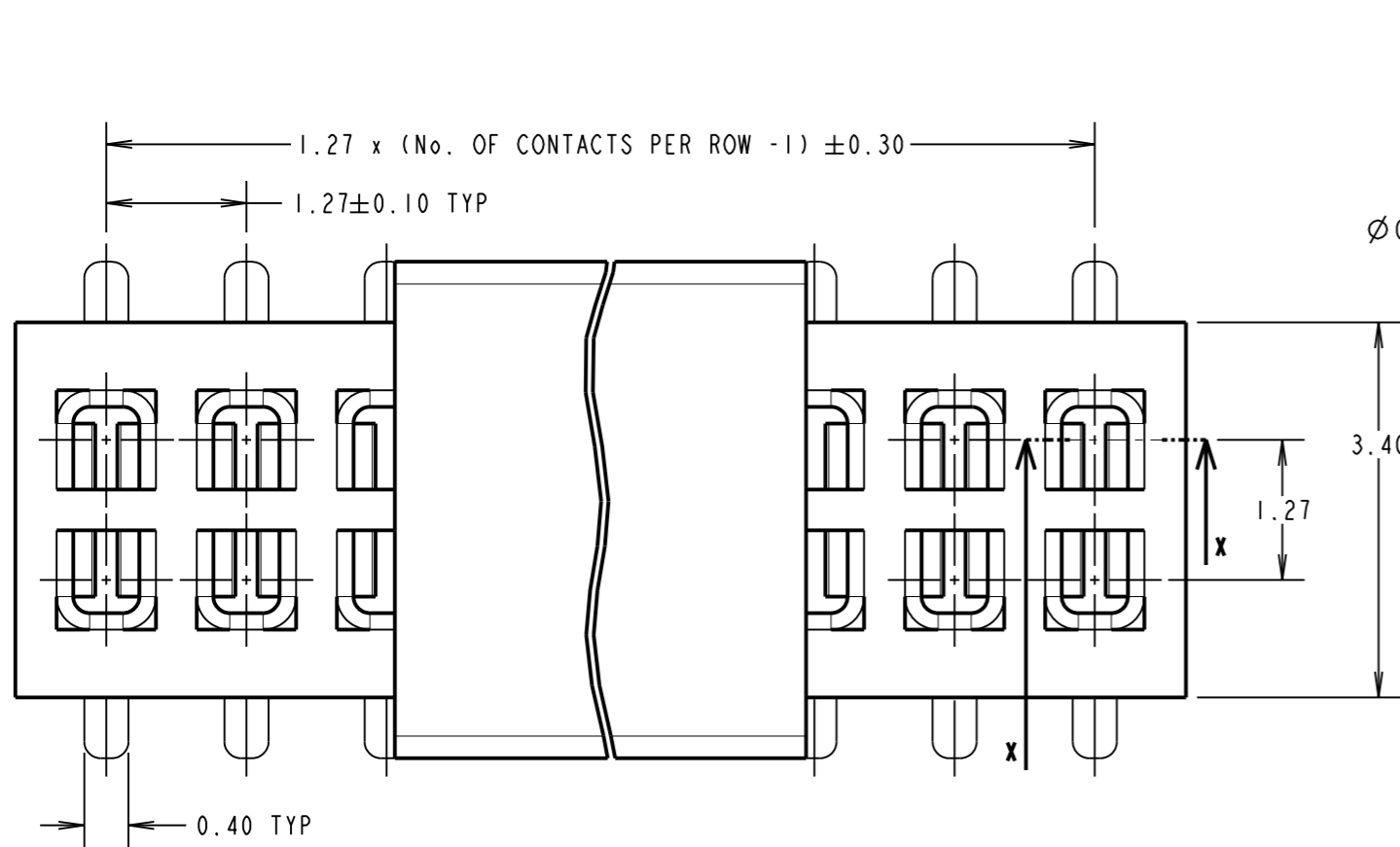
IF IN DOUBT - ASK

©

NOT TO SCALE

THIRD ANGLE PROJECTION

ALL DIMENSIONS IN mm



**SPECIFICATION:**

**MATERIAL:**  
 MOULDING = NYLON-6T, UL94V-0, BLACK  
 CONTACTS = PHOSPHOR BRONZE  
**FINISH:**  
 CONTACTS =  $1.27\mu$  NICKEL ALL OVER,  
 GOLD FLASH ON CONTACT AREA,  
 $2.54\mu$  100% TIN ON TAILS

**ELECTRICAL:**  
 CURRENT RATING = 1A  
 CONTACT RESISTANCE =  $20m\Omega$  MAX  
 INSULATION RESISTANCE =  $1000M\Omega$  MIN  
 DIELECTRIC WITHSTANDING = 500V AC FOR ONE MINUTE

**MECHANICAL:**  
 DURABILITY = 300 CYCLES MIN  
 INSERTION FORCE = 1.5N MAX PER CONTACT  
 WITHDRAWAL FORCE = 0.2N MIN PER CONTACT

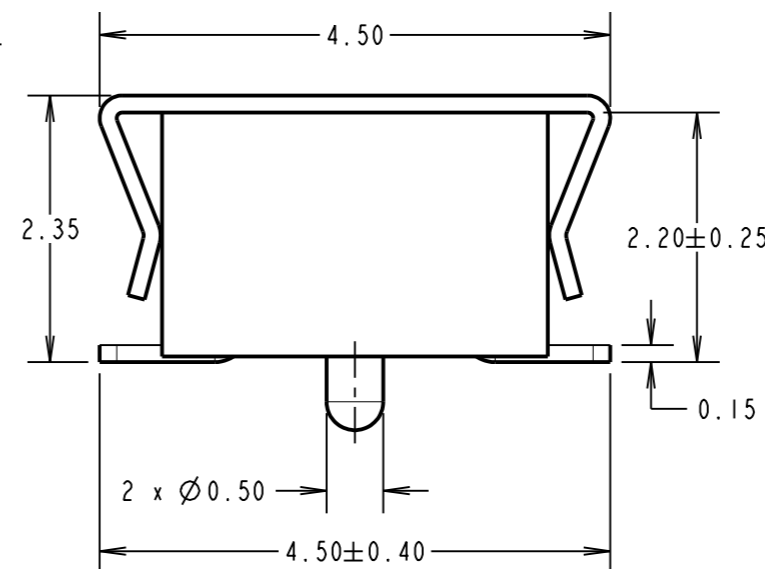
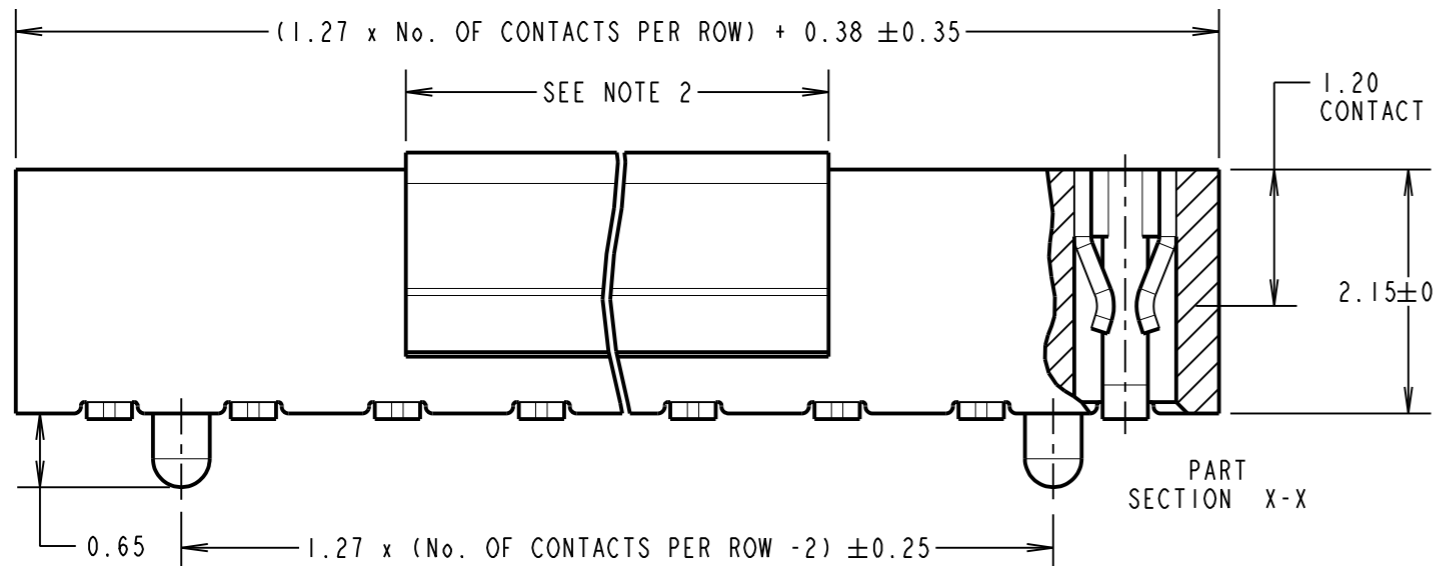
**ENVIRONMENTAL:**  
 TEMPERATURE RANGE =  $-40^\circ\text{C}$  TO  $+105^\circ\text{C}$

**PACKING:**  
 REEL  
 FOR COMPLETE SPECIFICATION, SEE COMPONENT SPECIFICATION C029XX (LATEST ISSUE)

ORDER CODE:  
**M50-315XX42R**

No. OF CONTACTS PER ROW:  
 03, 04, 05, 06, 08,  
 10, 15, 20, 22, 25

FINISH:  
 42 = GOLD FLASH + 100% TIN OVER NICKEL



- NOTE:
- ALL TOLERANCES ARE  $\pm 0.15$  UNLESS OTHERWISE STATED.
  - PICK AND PLACE CAP LENGTH =  $4.20$ mm FOR 03 TO 05 CONTACTS PER ROW,  
 $6.90$ mm FOR 06 TO 40 CONTACTS PER ROW.
  - FOR TAPE AND REEL DETAILS, SEE SHEET 3.

**HARWIN**

www.harwin.com  
 technical@harwin.com

THIS DRAWING AND ANY INFORMATION OR DESCRIPTIVE MATTER SET OUT HEREON ARE CONFIDENTIAL AND COPYRIGHT PROPERTY OF THE HARWIN GROUP AND MUST NOT BE DISCLOSED, LOANED, COPIED OR USED FOR MANUFACTURING, TENDERING OR FOR ANY OTHER PURPOSE WITHOUT THEIR WRITTEN PERMISSION.

**TOLERANCES**  
 $X = \pm 1\text{mm}$   
 $X.X = \pm 0.25\text{mm}$   
 $X.XX = \pm 0.10\text{mm}$   
 $X.XXX = \pm 0.01\text{mm}$   
 ANGLES =  $\pm 5^\circ$   
 UNLESS STATED

**MATERIAL:**  
 SEE ABOVE  
**FINISH:**  
 SEE ABOVE  
**S/AREA:**  
 mm<sup>2</sup>

**TITLE:** 1.27mm PITCH DIL SMT VERT  
 LOW PROFILE SOCKET ASSY  
 (TAPE & REEL)

**DRAWING NUMBER:**  
**M50-315XX42R**

MSP	10	17.08.17	20750
NAME	ISS.	DATE	C/NOTE
APPROVED: M.PERREN			
CHECKED: M.PLESTED			
DRAWN: R.ADDE			
CUSTOMER REF.:			
ASSEMBLY DRG:			