

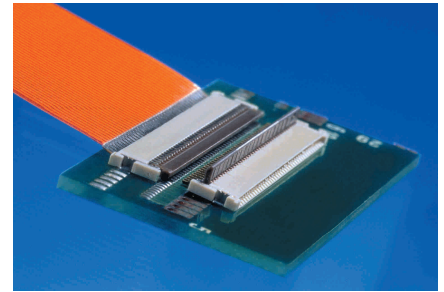
INTRODUCTION

Molex offers a wide variety of ultra low-profile SMT FFC/FPC connectors for tight packaging applications. Features include profile heights as low as 0.90mm (.035"), pull-type and flip-type actuators, straight and right-angle versions, and circuit sizes from 4-60. See Molex's website for further details, drawings, and the latest updates to our ultra low-profile FFC/FPC connector range.

Specifications:

- Current: 0.5A
- Voltage: 50V
- Circuit Size Range: 4-60
- Contact Resistance: 40mΩ max.
- Insulation Resistance: 50MΩ min.
- Withstanding Voltage: 250V AC/1 minute
- Packaging: Embossed Tape

molex® 0.30 and 0.50mm Pitch Ultra-Low Profile SMT FFC/FPC Connectors



New BackFlip™ 0.90mm (.035") Height Connector

SELECTION MATRIX

0.30mm (.012") Pitch FFC/FPC Connectors

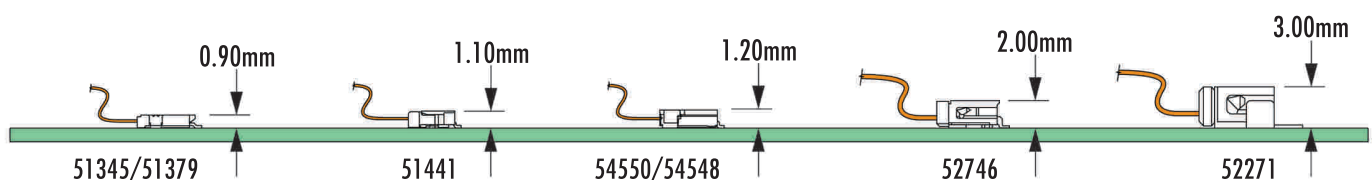
	Description	Series Number *	Circuit Size	Actuator/Contact Type	Housing/Actuator Material (UL 94V-0)	FFC/FPC
	Height: 1.30mm ZIF, Right Angle	54809	11, 15, 19, 21, 25, 27, 31, 33, 39, 45, 51	Easy-On™ Bottom Contact	LCP/PPS	0.20mm Thickness

0.50mm (.020") Pitch FFC/FPC Connectors

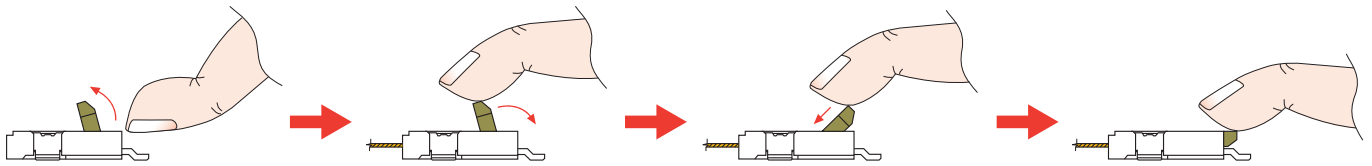
	Description	Series Number *	Circuit Size	Actuator/Contact Type	Housing/Actuator Material (UL 94V-0)	FFC/FPC
	Height: 0.90mm ZIF, Right Angle	51345	4, 6, 17, 18, 40	BackFlip™ Easy-On™ Top Contact	LCP/PPS	0.12mm Thickness
	Height: 0.90mm ZIF, Right Angle	51379	4, 5, 7, 12	Pull Type Top Contact	LCP/PPS	0.20mm Thickness
	Height: 1.10mm ZIF, Right Angle	51441	6, 7, 8, 9, 10, 11, 12, 16, 17, 18, 20, 22, 24	Easy-On™ Bottom Contact	LCP/PPS	0.30mm Thickness
	Height: 1.20mm ZIF, Right Angle	54550	5, 6, 7, 8, 9, 10, 11, 12, 13, 14, 15, 16, 17, 18, 19, 20, 21, 22, 24, 25, 26	Pull Type Top Contact	LCP/PPS	0.30mm Thickness (26 Ckt. = 0.28mm)
	Height: 1.20mm ZIF, Right Angle	54548	5, 6, 7, 8, 9, 10, 11, 12, 13, 14, 15, 16, 17, 18, 19, 20, 21, 22, 24, 26	Pull Type Bottom Contact	LCP/PPS	0.30mm Thickness (26 Ckt. = 0.28mm)
	Height: 1.20mm Non-ZIF, Right Angle	51281	5, 6, 8, 9, 10, 12, 14, 16, 18, 20, 22, 24, 26	No Actuator Dual Contact	LCP (No Actuator)	0.30mm Thickness
	Height: 1.30mm ZIF, Right Angle	51296	8, 12, 14, 18, 45	Easy-On™ Bottom Contact	LCP/Polyamide	0.30mm Thickness
	Height: 4.05mm (Locked) ZIF, Vertical	51374	10, 13, 15, 20, 26, 30, 33, 40, 45, 50, 60	Easy-On™ Vertical	LCP/PPS	0.30mm Thickness

Note: Contact Molex for ordering details, plating options and additional circuit sizes.

FFC/FPC HEIGHT COMPARISON

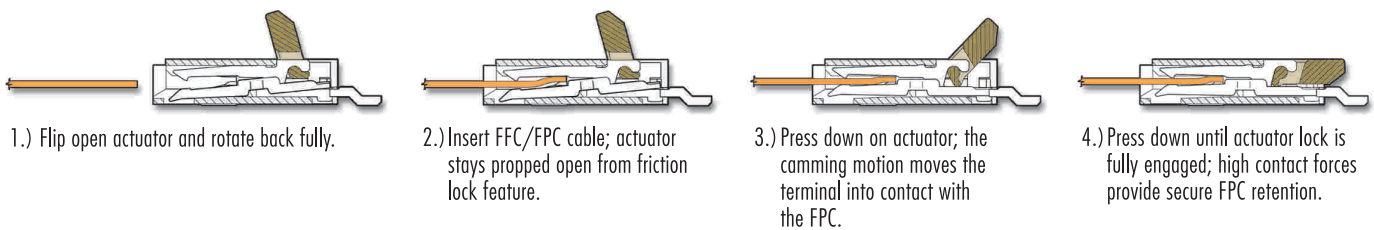


External View: Locking Feature



Internal View: Actuator on Contact

New 0.90mm (.035") Height BackFlip™ Connector Provides Space Saving and Easy Cable Insertion/Extraction



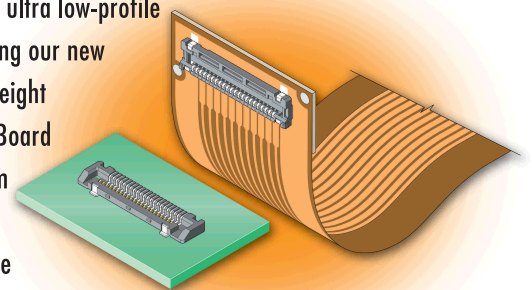
APPLICATIONS

- Cellular Phone
- Digital Still Camera
- Digital Camcorder
- PDA or PHS
- Voice Recorder
- GPS
- Portable Game Machine
- Any Low-Profile Mobile Device



ULTRA LOW-PROFILE FPC-to-BOARD

Molex offers other ultra low-profile connectors, including our new 0.95mm (.037") height single-row FPC-to-Board version on 0.40mm (.016") pitch. See Molex's website for more information.



Plug	Receptacle
500464-XXXX	500463-XXXX

Note: Circuit Sizes 07-22; see Molex's website for additional details.

See www.molex.com for drawings and details.



Bringing People & Technology Together, WorldwideSM

American Headquarters
2222 Wellington Ct,
Lisle, Illinois 60532 USA
Tel: 1-800-78MOLEX
amerinfo@molex.com

Far East North Headquarters
Yamato, Kanagawa, Japan
Tel: 81-462-65-2324
feninfo@molex.com

Far East South Headquarters
Jurong, Singapore
Tel: 65-6-268-6868
fesinfo@molex.com

European Headquarters
Munich, Germany
Tel: 49-89-413092-0
euroinfo@molex.com

Corporate Headquarters
2222 Wellington Ct,
Lisle, Illinois 60532 USA
Tel: 630-969-4550