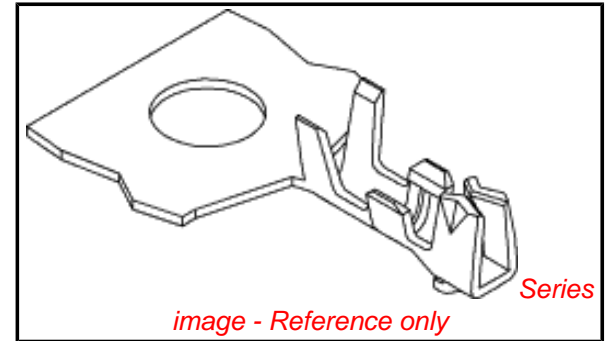


PLEASE CHECK WWW.MOLEX.COM FOR LATEST PART INFORMATION

Part Number: **0500588000**
Status: **Active**
Overview: picoblade
Description: 1.25mm (.049") Pitch PicoBlade™ Crimp Terminal, Female, 28-32 AWG, Reel

Documents:

3D Model	Product Specification PS-51021-022 (PDF)
Drawing (PDF)	Product Specification PS-51021-023 (PDF)
Product Specification PS-51021-001 (PDF)	Product Specification PS-51021-026 (PDF)
Product Specification PS-51021-002 (PDF)	Product Specification PS-51021-027 (PDF)
Product Specification PS-51021-009 (PDF)	Product Specification PS-51021-028 (PDF)
Product Specification PS-51021-010 (PDF)	RoHS Certificate of Compliance (PDF)
Product Specification PS-51021-011 (PDF)	



General

Product Family	Crimp Terminals
Series	<u>50058</u>
Crimp Quality Equipment	Yes
MolexKits	Yes
Overview	<u>picoblade</u>
Product Name	PicoBlade™

Physical

Gender	Female
Material - Metal	Phosphor Bronze
Material - Plating Mating	Tin
Material - Plating Termination	Tin
Packaging Type	Reel
Plating min: Mating (µin)	36
Plating min: Mating (µm)	0.90
Plating min: Termination (µin)	36
Plating min: Termination (µm)	0.90
Termination Interface: Style	Crimp or Compression
Wire Insulation Diameter	0.50-1.00mm (.020-.039")
Wire Size AWG	28, 30, 32
Wire Size mm²	N/A

Material Info

Reference - Drawing Numbers

Packaging Specification	SPK-50058-001
Product Specification	PS-51021-001, PS-51021-002, PS-51021-009, PS-51021-010, PS-51021-011, PS-51021-022, PS-51021-023, PS-51021-026, PS-51021-027, PS-51021-028, RPS-501576-001, RPS-51021-001, RPS-51021-002, RPS-51021-003, RPS-51021-004, RPS-51021-006, RPS-51021-007, RPS-51021-008, RPS-51021-009, RPS-51021-010, RPS-51021-011, RPS-51021-013, RPS-51021-014, RPS-51021-015, RPS-51021-016, RPS-51021-017, RPS-51021-018, RPS-51021-019, RPS-51021-020, RPS-51021-021, RPS-51021-022, RPS-51021-023, RPS-51021-024, RPS-51021-025, RPS-51021-026, RPS-51021-027, RPS-51021-028, RPS-51021-029, RPS-51021-030, RPS-51021-031, RPS-51021-032, RPS-51021-033, RPS-51021-034, RPS-51021-037, RPS-51021-038,

EU RoHS

**ELV and RoHS
Compliant**
**REACH SVHC
Contains SVHC: No**
**Halogen-Free
Status**

China RoHS



**Need more information on product
environmental compliance?**

Email productcompliance@molex.com
For a multiple part number RoHS Certificate of
Compliance, [click here](#)

Please visit the [Contact Us](#) section for any
non-product compliance questions.

Search Parts in this Series
50058Series

Mates With
50125 Crimp Terminal 26-28 AWG, 50133
Crimp Terminal 28-32 AWG

Use With
51021 Housing

Application Tooling | FAQ

*Tooling specifications and manuals are
found by selecting the products below.
Crimp Height Specifications are then
contained in the Application Tooling
Specification document.*

Global

Description	Product #
Hand Crimp Tool for 1.25mm (.049") Pitch PicoBlade™ Crimp Terminals, 26-32 AWG	<u>0638190300</u>
Hand Crimp Tool for 1.25mm (.049") Pitch	<u>0638190400</u>

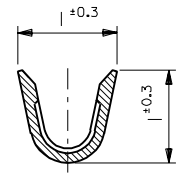
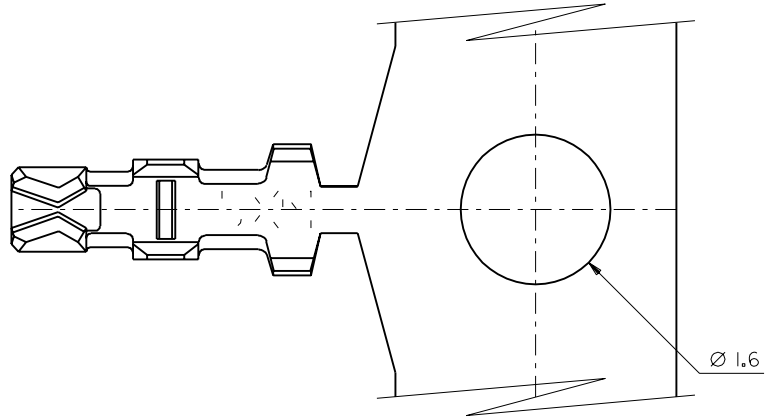
Sales Drawing

RPS-51021-039, RPS-51021-040, RPS-51021-041,
RPS-51021-042, RPS-51021-043, RPS-51021-044,
RPS-51021-045, RPS-51021-046, RPS-51021-047,
RPS-51021-048, RPS-51021-050, RPS-51021-051,
RPS-51021-052, RPS-51021-053, RPS-51021-054,
RPS-51021-055, RPS-51021-056, RPS-51021-057,
RPS-51021-058, RPS-51021-059, RPS-51021-060,
RPS-51021-061, RPS-51021-062, RPS-51021-063,
RPS-51021-064, RPS-51021-065, RPS-51021-066,
RPS-51021-067, RPS-51021-068, RPS-51021-071,
RPS-51021-072, RPS-51021-073, RPS-51021-074,
RPS-51021-076, RPS-51021-077, RPS-51021-078,
RPS-51021-079, RPS-51021-083, RPS-51021-084,
RPS-51021-085, RPS-51021-086, RPS-51021-089,
RPS-51021-091, RPS-51021-092, RPS-51021-096,
RPS-51021-097, RPS-51021-101, RPS-53398-002,
RPS-53398-037, RPS-53398-038
SD-50058-8*00

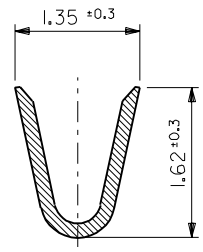
PicoBlade™ Crimp Terminals, 26-32 AWG	
T2 Terminator	<u>0639103700</u>
Tooling Die	
FineAdjust™	<u>0639003700</u>
1.25mm (.049") Pitch Crim Terminal, 28-32 AWG	
Extraction Tool	<u>0011030043</u>
Hand Crimp Tool for Series 50058 and 50079 Terminals on Metal Strip	<u>0638110000</u>
Japan	
Description	Product #
Applicator for M21 1A Bench Press, 26-32 AWG, for 50058 and 50079 Crimp Terminal	<u>0570673000</u>
Side-Feed Applicator For Full-Auto Machine	<u>0570673200</u>
Extraction Tool	<u>0570726000</u>

This document was generated on 06/07/2010

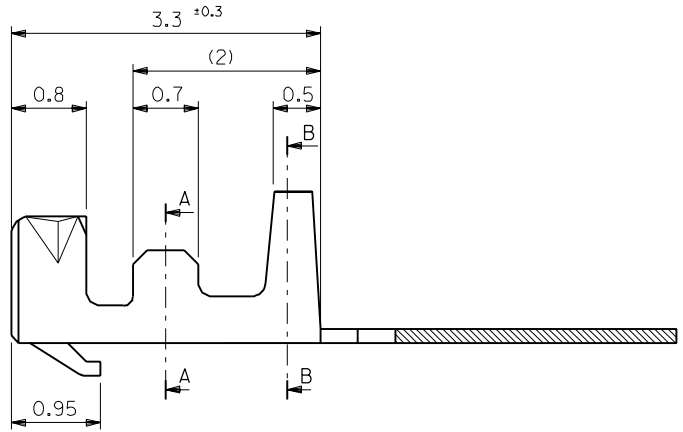
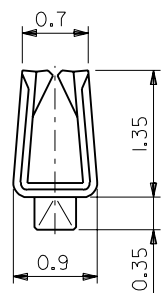
PLEASE CHECK WWW.MOLEX.COM FOR LATEST PART INFORMATION



SECT. A-A



SECT. B-B



50058-8100	バラ状 LOOSE
50058-8000	連鎖状 CHAIN
ENG. NO.	端子形状 FORM

注記
NOTES

- 適合ハウジング：51021シリーズ
APPLICABLE HOUSING：51021 SERIES
- メッキ仕様 PLATING
錫 0.9 μ m MIN. リフロー処理（前メッキ）
TIN 0.9 μ m MIN. REFLOW TREATMENT (PRE-PLATED)

材料 MATERIAL リン青銅 PHOSPHOR BRONZE ($t=0.15$)		仕上げ FINISH —H—	
適用電線範囲 WIRE RANGE AWG #28-32		被覆外径 INS. RANGE $\phi 0.5-1.0$	
DRAWN BY '92/10/21 H.HIRAMOTO		CHK'D BY '93/9/6 M.FUKUSHIMA	
APP'D BY '93/9/6 M.FUKUSHIMA		尺度 SCALE 20 - 1	
DR. / CHK.	日付 DATE	変更内容 REVISION RECORD	記号 LTR
D	'93/9/3	変更 (J30883)	H.H / M.F
C	'92/10/27	変更 & 再作図 REVISED & REDRAWN (J20810)	H.H / M.F
一般公差 GENERAL TOLERANCES			
角度 ANGLE	$\pm 3^\circ$		
30以上 OVER	± 0.3		
10以上 30未満 OVER UNDER	± 0.25		
10未満 UNDER	± 0.2		

molex MOLEX-JAPAN CO.,LTD. 日本モレックス株式会社	
REVISE ONLY ON CAD SYSTEM	
TITLE 名称 1.25 WIRE TO BOARD CONN. CRIMP REC. TERMINAL	
DWG. NO.	REV
SD-50058-8*00	D