

Monolithic crystal filter

MQF21.4-1500/16



Application

- 8 pol filter
- i.f.- filter
- use in mobile and stationary transceivers

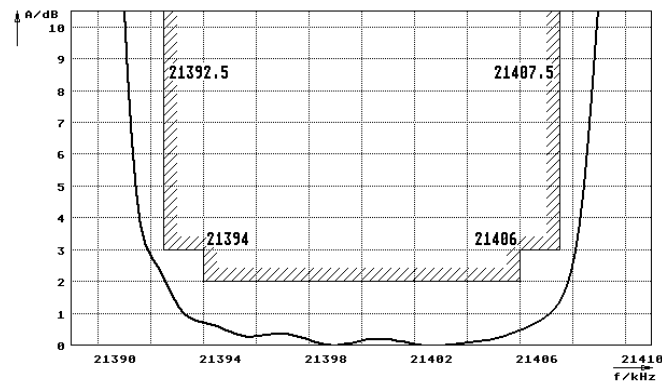
Limiting values		Unit	Value
Nominal frequency	f_0	MHz	21.4
Insertion loss		dB	< 3.5
Pass band at 3.0dB		kHz	$\pm > 7.5$
Ripple in pass band	$f_0 \pm 6$ kHz	dB	< 2.0
Stop band attenuation	$f_0 \pm 17$ kHz	dB	> 70
	$f_0 \pm 22$ kHz	dB	> 90
Alternate attenuation	$f_0 \pm 22 \dots 500$ kHz	dB	> 90
	IMD (Input power -10dBm)		
	$f_1=f_0 \pm 50$ kHz	dB	< -105 (output level)
	$f_2=f_0 \pm 100$ kHz	dB	< -105 (output level)

Terminating impedance Z			
R1 C1		Ohm/pF	910 25
R2 C2		Ohm/pF	910 25

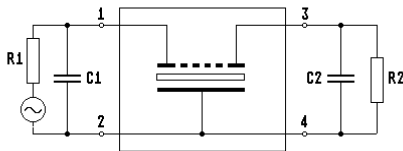
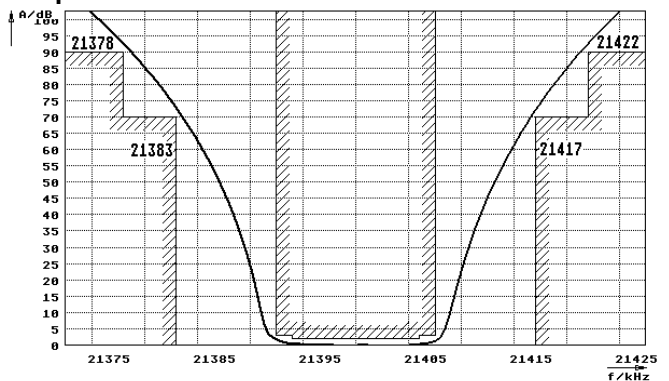
Operating temp. range	°C	-10... +70
Storage temp. range	°C	-45... +85
Environment conditions		according to CF001

Characteristics MQF21.4-1500/16

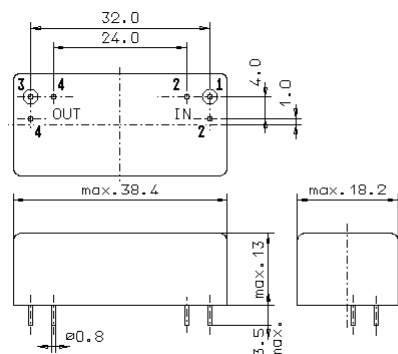
Pass band



Stop band



- Pin connections:
- 1 Input
 - 2 Ground
 - 3 Output
 - 4 Ground



GM17

RoHS compliant