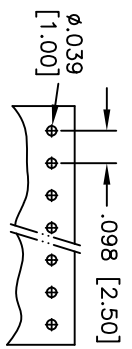
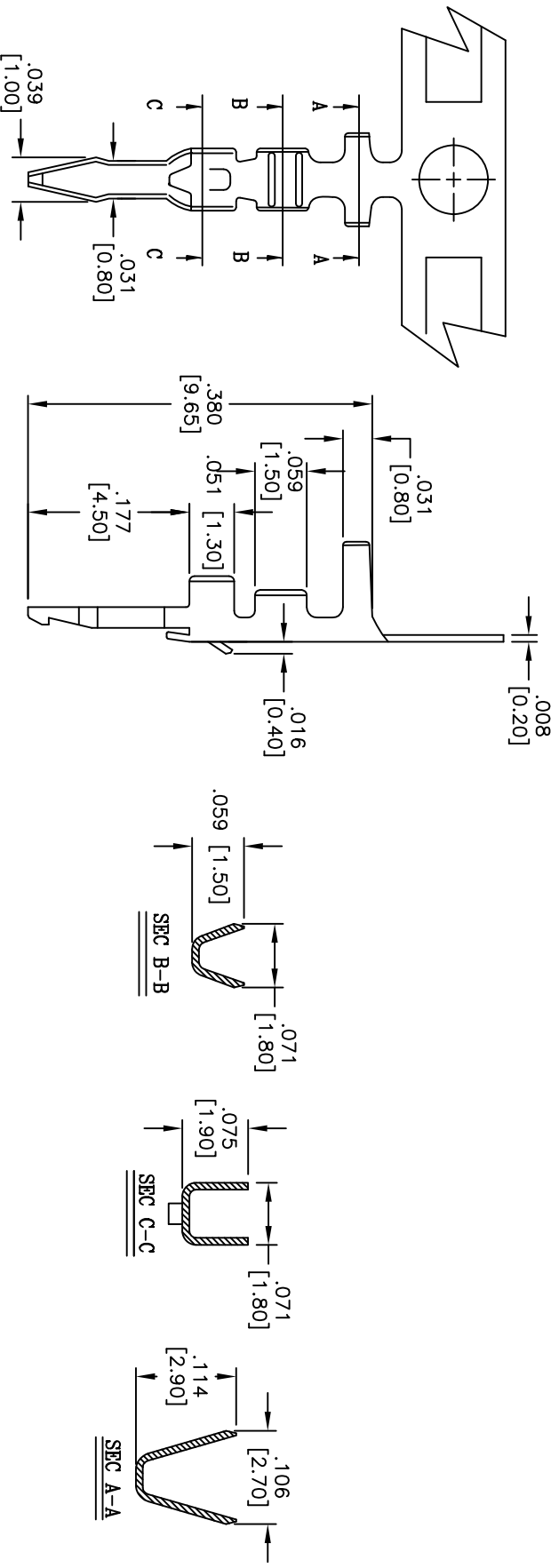


Rev	AWO #	Description	Date	Appr
-		RELEASED	10/22/10	

APPROVED: _____
 DATE: _____ TITLE: _____



RECOMMENDED PCB LAYOUT

SPECIFICATIONS:

- Material: Brass bronze
- Plating: Matt Tin plated
- Mechanical:
- Insulation O.D.: 1.6-2.1mm
- Wire Range: 22-28 AWG.
- Packaging: Reel, 10K pcs / reel
- Environmental:
- Lead free, RoHS Compliant



UNLESS OTHERWISE SPECIFIED
 ALL DIMENSIONS ARE IN INCHES [MM]
 TOLERANCES: EXCEPT AS NOTED
 INCHES: .X ± .10 .XX ± .020 .XXX ± .015
 MILLIMETERS: .X ± .10 .XX ± .015 .XXX ± .010

ADAM TECH
 909 Rahway Avenue, Union, NJ 07083
 Phone: 908-687-5000 Fax: 908-687-5710

TITLE: **.098 [2.50] CRIMP TERMINAL**

DRAWN	DY	10/22/10
CHECKED		
APPROVED		

SIZE	PART NO.	REV.
X	25CTF-MT-R	-
REF: 500/63T	SCALE: NTS	SHEET 1 OF 1