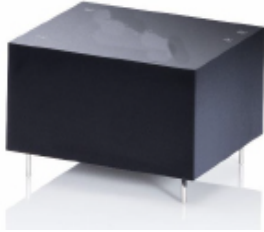




## OAC10- Series

## 10 Watt AC/DC Power Supply



NO LOAD CONSUMPTION 0.1 W  
 Isolated output 3750VAC  
 Short Circuit protection  
 Encapsulated compact size 1" X1"  
 CE recognized  
 ITE & AC Motor Applications  
 2 year Warranty



		UNIT		
<b>INPUT</b>	<b>Voltage/Freq</b>	V	Universal Input voltage AC 90V ~ 264V	47 ~ 63Hz
	<b>Current Typ. 110V</b>	A	250 mA	
	<b>220V</b>		150 mA	
	<b>Start-up time 115V</b>	-	2s	
	<b>FUSE EXTERNAL</b>			
<b>Inrush Current</b>	A	115V 20 ( Ta=25°C , Io=100% at cold Start ); 230V 40 ( Ta=25°C , Io=100% at cold Start )		
<b>Leakage</b>	mA	264V=0.25		

		UNIT	OAC10-3.3	OAC10-5	OAC10-12	OAC10-24
<b>OUTPUT</b>	<b>Nominal Voltage</b>	VDC	3.3	5	12	24
	<b>Efficiency typ</b>	%	70	76	78	80
	<b>Current</b>	A	2.5	2.0	0.84	0.42
	<b>Capacitive Load max.</b>	uF	18000uF	4800uF	2000uF	360uF
	<b>Line Regulation</b>	mV	+/-1.5	+/-1.5	+/-1.5	+/-1.5
	<b>Load Regulation</b>	mV	+/-2	+/-2	+/-2	+/-2
	<b>Ripple Noise maximum</b>	mVp-p	180	150	150	180
	<b>Hold up Time</b>	mS	115V/60 Hz 8ms			
	<b>Over Load Protection</b>	-	Auto Recovery	Auto Recovery	Auto Recovery	Auto Recovery
	<b>Short Circuit Protection</b>	-	CONT. Auto Recovery	CONT. Auto Recovery	CONT. Auto Recovery	CONT. Auto Recovery

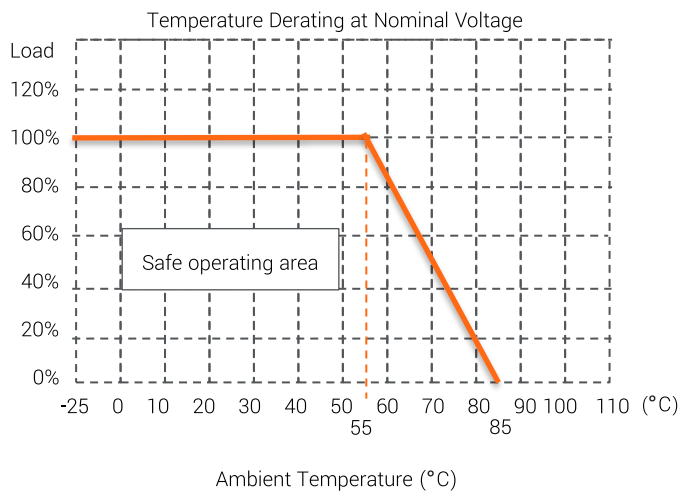
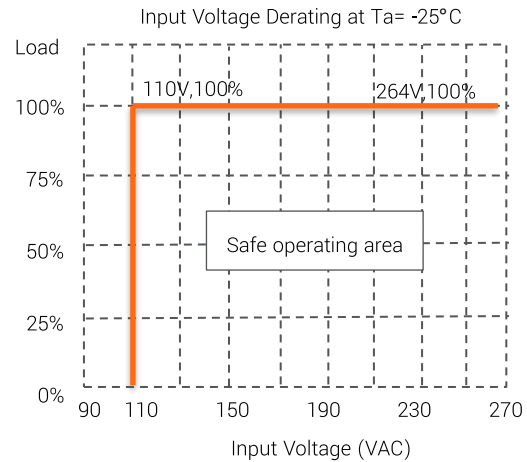
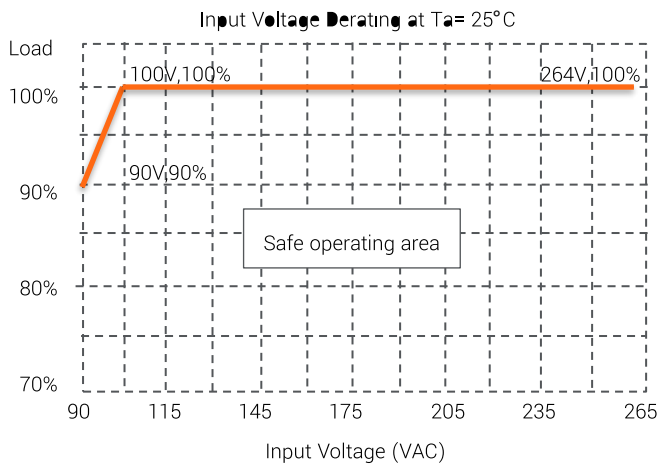
<b>Isolation</b>	<b>Isolation Voltage</b>	1Min. Pri to Sec. cut-off current 5mA	3750VAC
------------------	--------------------------	---------------------------------------	---------





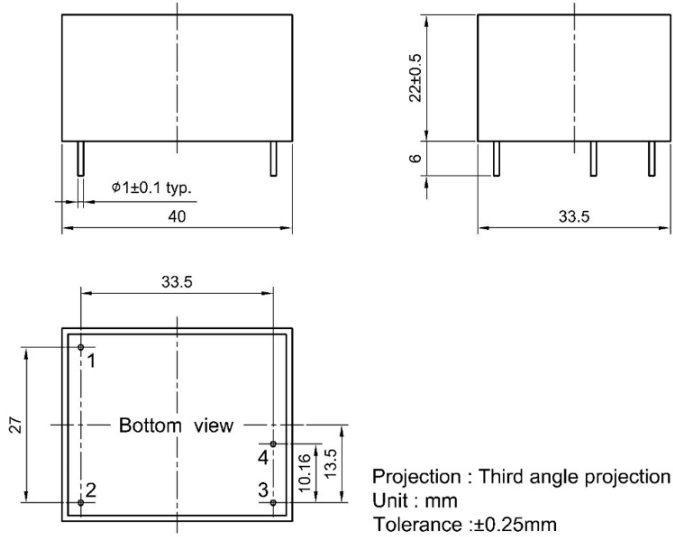
<b>Environment</b>	<b>Isolation Capacitance</b>	TYP. 1100 pF	
	<b>Isolation Resistance</b>	DC 500V 1 minute GΩ (At room temperature & Humidity)	
	<b>Operating temp/hum</b>	-25~ +55☒	
	<b>Storage temp/hum</b>	-25 ~ +85☒ HUMIDITY 95%	
	<b>Vibration</b>	MIL-STD-202G	
<b>Safety</b>	<b>MTBF</b>	115VAC@ 25C	776K hrs; 230VAX@25C 606K hrs
	<b>CE</b>	IEC61000-4-2 ESD, IEC61000-4-4 EFT, IEC61000-4-5 SURGE CLASSA	
	<b>Line Emission</b>	EN55032-B	
<b>Size</b>	<b>MM/G</b>	40X33.5X22	42 grams

## OUTPUT DERATING CURVE AND RECCOMENDED MOUNTING DIAGRAM



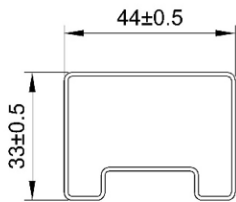


## DIMENSIONAL DRAWING (mm)



Pin	Single
1	Vin(N)
2	Vin(L)
3	+Vout
4	-Vout

## Package



UNIT:mm  
 1 Tube = 14 pcs  
 Length:520 $\pm 2$ mm

## Ripple and Noise

