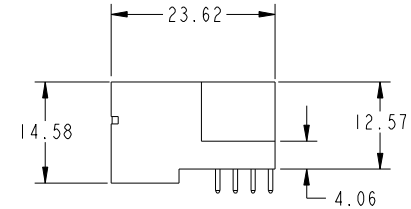
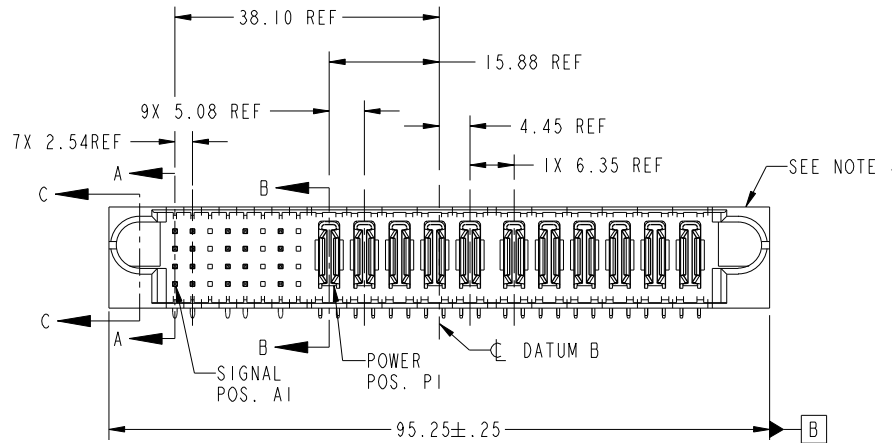


Tous droits strictement reserves. Reproduction ou communication a des tiers interdite sous quelque forme que ce soit sans autorisation écrite du propriétaire. Propriete de c FCI. Droits de reproduction FCI.



All rights strictly reserved. Reproduction or issue to third parties in any form whatever is not permitted without written authority from the proprietor. Property of FCI. Copyright FCI.

PRODUCT NO.	ROWS	SIGNAL								POWER															
		E1	1	2	3	4	5	6	7	8	P1	P2	P3	P4	P5	P6	P7	P8	P9	P10	P11	E2			
51939-259 NOTE: ③	D C B A		H	H	H	H	X	H	X		PA	PA	PA	PA	PA	PA	PA	PA	PA	PA	PA	PA			
			G	X	G	G	X	T	X																
			F	X	F	F	X	F	X																
			E	X	E	E	X	E	X																



CODE	DIM "M" MATING LENGTH	CONTACT TYPE
H	[5.59]	SIGNAL
R	[6.86]	SIGNAL
T	[6.86]	SIGNAL
PA	[N/A]	POWER
G	[5.59]	SIGNAL
F	[5.59]	SIGNAL
E	[5.59]	SIGNAL
X	OMITTED	OMITTED

mat'l code				SEE NOTE 2		tolerances unless otherwise specified		CUSTOMER	
ltr	ecn no.	dr	date	linear		0.X ± 0.3	COPY		www.fciconnect.com
A	DG06-0447	JMG	10/20/06	angles		0.XX ± 0.13	projection		
						0.XXX ± 0.051			title
				dr	JM GUO	10/20/06			32S + 11P
				enrg	RYAN YUAN	10/20/06			RIGHT ANGLE SOLDER HEADER
				chr	BEER FU	10/20/06			product family
				appd	JOSEPH HSIA	10/20/06			PwrBlade
sheet index	revision sheet	A	A	A	A	A			code
		1	2	3	4				213
									sheet
									1 of 4

cage code 22526

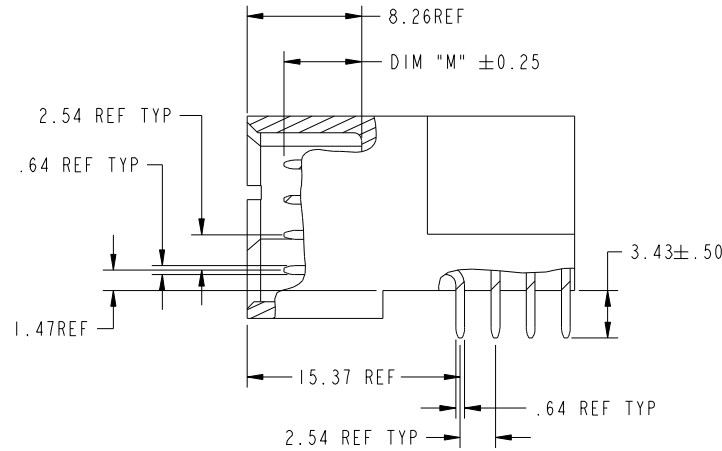
Pro/E

Tous droits strictement réservés. Reproduction ou communication a des tiers interdite sous quelque forme que ce soit sans autorisation écrite du propriétaire. Propriété de c FCI. Droits de reproduction FCI.

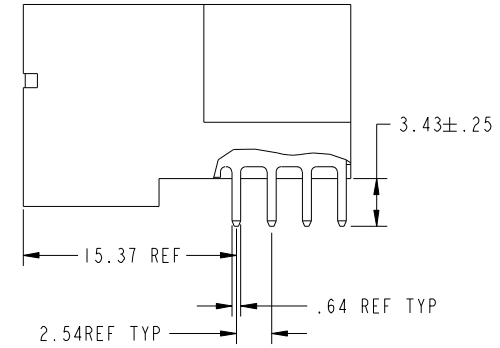
All rights strictly reserved. Reproduction or issue to third parties in any form whatever is not permitted without written authority from the proprietor. Property of FCI. Copyright FCI.



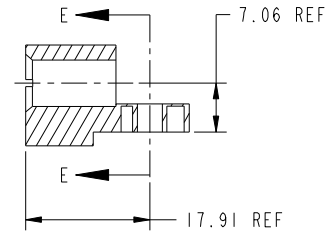
PRODUCT NUMBER
51939-259_--
NOTE: ③



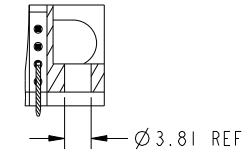
BROKEN-OUT SECTION A-A
SCALE 2:1



BROKEN-OUT SECTION B-B
SCALE 2:1



SECTION C-C



PARTIAL SECTION E-E

mat'l code				SEE NOTE 2		tolerances unless otherwise specified		CUSTOMER		FCI	
ltr	ecr no.	dr	date	linear	0.X ±0.3	COPY		www.fciconnect.com		title	
A					0.XX ±0.13	projection		32S + 11P		RIGHT ANGLE SOLDER HEADER	
				angles	0.XXX ±0.051	MIM		product family		PwrBlade	
				dr	0° ±2°	scale		size		code	
				enr	JM GUO 10/20/06	1:1		dwg no		213	
				chr	RYAN YUAN 10/20/06			51939-259		sheet	
				appd	BEER FU 10/20/06			A		2 of 4	
					JOSEPH HSIA 10/20/06						
sheet index		revision sheet									

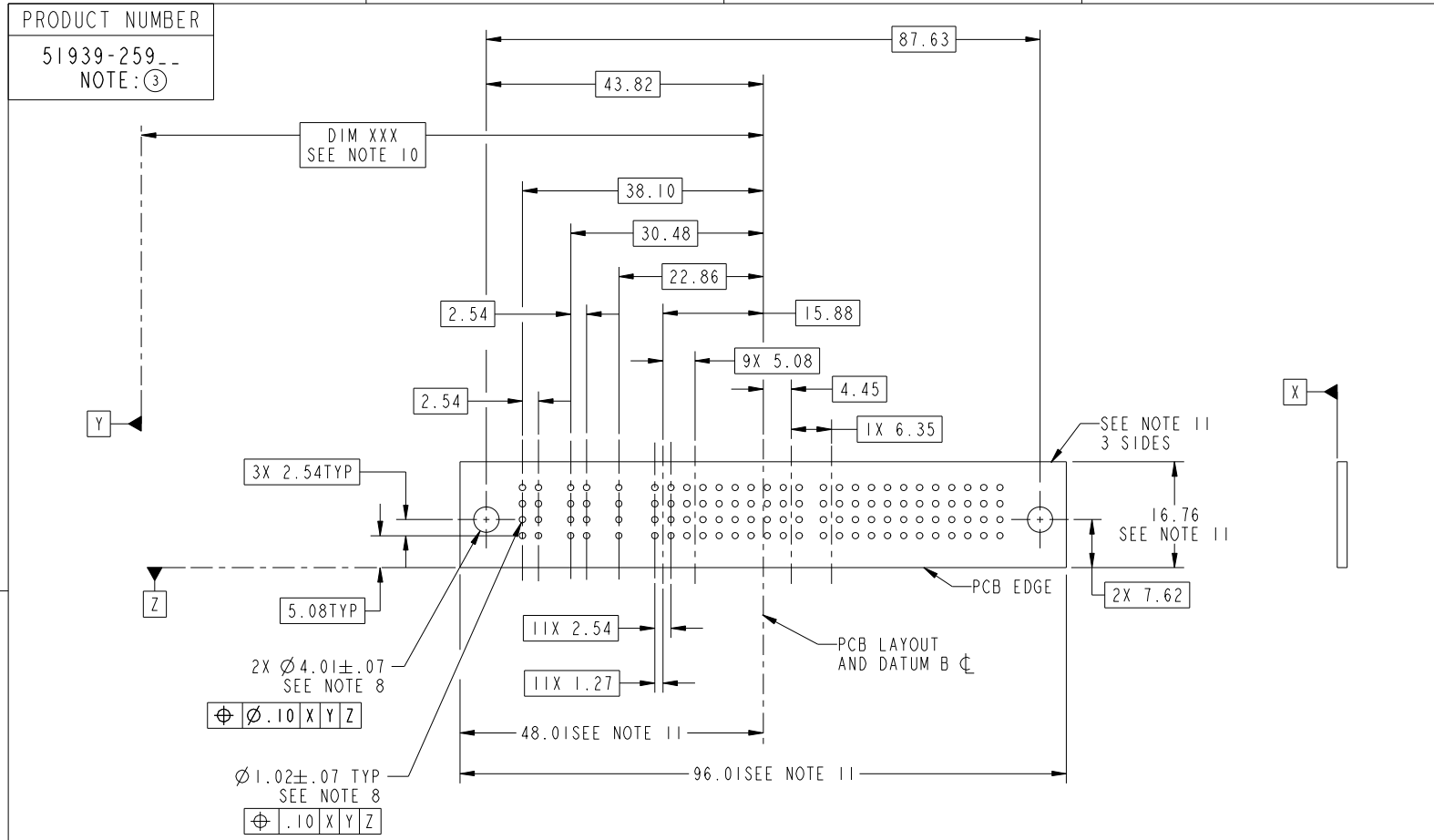
cage code 22526

Pro/E

Tous droits strictement reserves. Reproduction ou communication a des tiers interdite sous quelque forme que ce soit sans autorisation écrite du propriétaire. Propriete de c FCI. Droits de reproduction FCI.



All rights strictly reserved. Reproduction or issue to third parties in any form whatever is not permitted without written authority from the proprietor. Property of FCI. Copyright FCI.



RECOMMENDED PCB LAYOUT

mat'l code		SEE NOTE 2		tolerances unless otherwise specified		CUSTOMER		 www.fciconnect.com	
ltr	ecn no.	dr	date	linear	0.X ± 0.3	COPY		title	
A					0.XX ± 0.13	projection		32S + 11P	
				angles	0.XXX ± 0.051			RIGHT ANGLE SOLDER HEADER	
				dr	0° ± 2°			product family PwrBlade code 213	
				enr	JM GUO 10/20/06	scale		size dwg no 213	
				chr	RYAN YUAN 10/20/06	1:1		51939-259 sheet 3 of 4	
				appd	BEER FU 10/20/06				
					JOSEPH HSIA 10/20/06				
sheet index	revision sheet								

cage code 22526

Pro/E

Tous droits strictement reserves. Reproduction ou communication a des tiers interdite sous quelque forme que ce soit sans autorisation écrite du propriétaire. Propriete de c FCI. Droits de reproduction FCI.



All rights strictly reserved. Reproduction or issue to third parties in any form whatever is not permitted without written authority from the proprietor. Property of FCI. Copyright FCI.

PRODUCT NUMBER
51939-259_--
NOTE: ③

NOTES:

1. DIMENSIONS AND TOLERANCES ARE IN ACCORDANCE WITH ASME Y14.5M, 1994 UNLESS OTHERWISE SPECIFIED.

CONNECTOR NOTES:

2. HOUSING MATERIAL: UL 94 V-0 GLASS FILLED HIGH-TEMP THERMOPLASTIC
POWER CONTACT MATERIAL: COPPER ALLOY
SIGNAL PIN MATERIAL: COPPER ALLOY

③ 51939-259; 51939-259LF; 51939-259GLF PLATING SPEC. SEE PRINT: 10064183

4. MANUFACTURER'S NAME, P/N, AND DATE CODE TO APPEAR ON THIS SURFACE.

5. PRODUCT SPECIFICATION GS-12-149.
APPLICATION SPECIFICATION BUS-20-067.

6. PACKAGED IN TRAYS.

PCB NOTES:

7. ALL HOLE DIAMETERS ARE FINISHED HOLE SIZE.

8. MOUNTING HOLES, WHERE APPLICABLE, ARE UNPLATED.

9. $\varnothing 1.151 \pm 0.025$ DRILLED HOLES PLATED WITH 0.008 MIN SnPb OR Sn OVER 0.03 TO 0.08 Cu PLATING TO ACHIEVE $\varnothing 1.02 \pm 0.07$ HOLE.

10. "DIM XXX" TO BE DETERMINED BY THE CUSTOMER.

11. CONNECTOR KEEP-OUT ZONE.

mat'l code		SEE NOTE		tolerances unless otherwise specified		CUSTOMER		FCI		www.fciconnect.com	
ltr	ecr no.	dr	date	linear	$0.X \pm 0.3$	COPY		projection	title		
A					$0.XX \pm 0.13$	MIM			32S + 11P		
				angles	$0.XXX \pm 0.051$	← MIM →			RIGHT ANGLE SOLDER HEADER		
				dr	JM GUO 10/20/06	scale		product family		PwrBlade	code
				enr	RYAN YUAN 10/20/06	1:1		size	dwg no		213
				chr	BEER FU 10/20/06	A		51939-259		sheet	
				appd	JOSEPH HSIA 10/20/06			4 of 4			
sheet index	revision sheet										

cage code 22526

Pro/E