

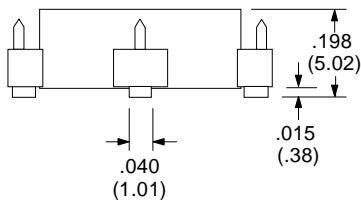
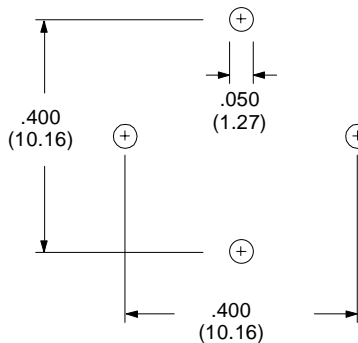
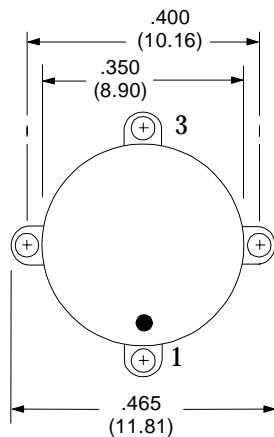
SURFACE MOUNT INDUCTOR

| Parameter | Min. | Typ. | Max. | Units |
|--------------|------|------|------|------------------|
| Inductance * | | 40 | | μH |
| DCR | | 0.30 | | $\text{m}\Omega$ |

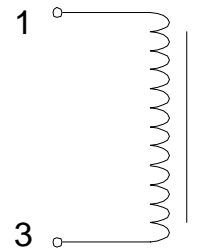
Materials used in construction of this component meet or exceed UL Class B and can be operated up to 130°C.

* Inductance tested at 100Khz-100mV
200 mA Max. Current for 40°C temp rise

Physical Dimensions inches (mm)



Schematic Diagram



RHOMBUS P/N: **L-399**

CUST P/N:

NAME:

DATE: **2/19/99**

SHEET: 1 OF 1