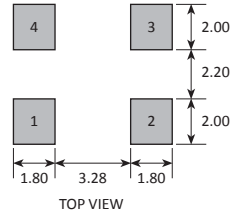


PAD	CONNECTION
1	Not connected or Enable/Disable
2	Ground
3	Output
4	Supply



TOP VIEW

Features

- ▢ Ceramic package with metal lid
- ▢ Standard frequencies held in stock
- ▢ Enable / disable tristate function
- ▢ Power saving option
- ▢ Competitive pricing

Specifications

Parameters	Product	Option Codes	
	GXO-7551		
Frequency range:	0.50 ~ 107MHz	■	
Frequency stability:	±100ppm ±50ppm ±25ppm ±20ppm	■ □ □ □	B A D
Operating temperature range:	-10 to +70°C -40 to +85°C	■ □	I
Storage temperature range:	-55 to +125°C	■	
Supply voltage (V _{DD}):	+5.0V (±5%)	■	
Supply current (max):	10mA (0.5 ~ 29.9MHz) 15mA (30.0 ~ 34.9MHz) 30mA (35.0 ~ 65.9MHz) 50mA (66.0 ~ 80.0MHz) 60mA (80.1 ~ 107MHz)	■ ■ ■ ■ ■	
Logic levels:	'0' level = 10%V _{DD} max '1' level = 90%V _{DD} min	■ ■	
Start up time:	10ms max	■	
Waveform symmetry:	45:55 max 40:60 max (>50.0MHz)	■ ■	
Driving ability:	15pF CMOS (*see note)	■	
Rise / fall time:	10ns max (<40MHz) 7ns max (40.0~99.9MHz) 5ns max (>100MHz)	■ ■ ■	
Enable / disable function:	None (pad 1 not connected) Standard tristate, no power saving (E/D times 100ns / 100ns) Power-saving, standby current 10µA (E/D times 10ms / 100ns)	□ ■ □	N P

■ Standard. □ Optional - Please specify required code(s) when ordering

* Note: will drive up to 50pF, but figures for rise/fall and supply current may vary from those shown. For details, contact our sales office.

Ordering Information

Product name + option codes (if any) + frequency

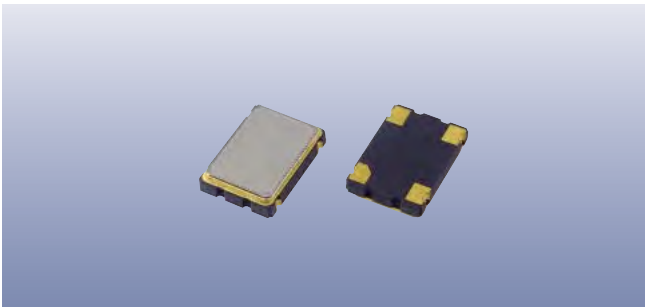
eg: **GXO-7551 32.0MHz** 5V, ±100ppm, -10+70°C

GXO-7551/BIP 40.0MHz 5V, ±50ppm, -40+85°C, power-saving



Option code X (eg GXO-7551/X) denotes a custom spec.

Enable / Disable Function

Input (pad 1)	Output (pad 3)
Open	Enabled
'1' level	Enabled
'0' level	High Impedance



Construction

-  Ceramic body with gold-plated pads
-  Metal lid, seam sealed

Composition



This product is lead-free, and is fully compliant with the RoHS 2 directive 2011/65/EU



Packaging & Handling

Production quantities supplied on T&R, 1k pcs per reel.
Small quantities may be supplied on tape (no reel), or in bulk.



♦ Static sensitive product. Observe proper handling precautions

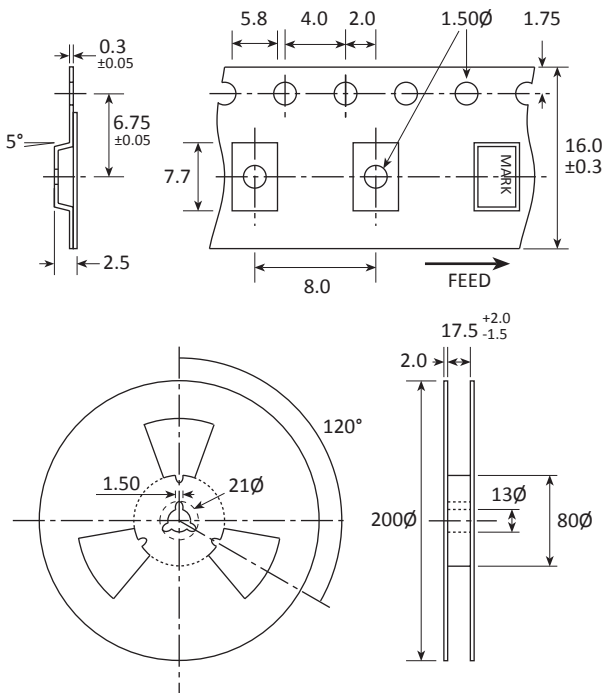
Marking

GOLLEDGE
FREQUENCY
• PARTNO DC

- Pin 1
- Marking type: Laser
- DC = Date code in YM, eg "EC" = Mar 2015

	A	B	C	D	E	F	G	H	J	K	L	M
Y	1	2	3	4	5	6	7	8	9	0		
M	Jan	Feb	Mar	Apr	May	Jun	Jul	Aug	Sep	Oct	Nov	Dec

Tape & Reel Specification



Not to scale. Dimensions in mm. Tolerances ±0.1mm unless otherwise stated.

Soldering Profile

