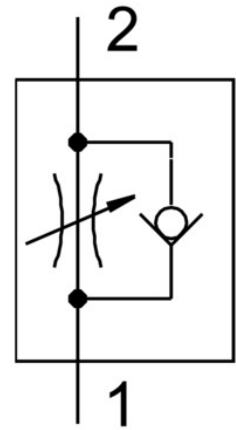
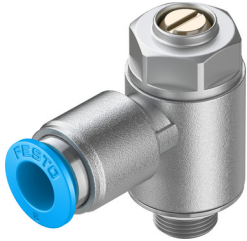


One-way flow control valve GRLA-1/8-QS-8-MF-D

Part number: 537076

FESTO



Data sheet

Feature	Value
Type code	GRLA
Valve function	Flow control non-return function
Pneumatic connection 1	QS-8
Pneumatic connection 2	G1/8
Type of mounting	Screw-in With external thread
Standard nominal flow rate in flow control direction	475 l/min
Standard nominal flow rate in non-return direction	325 l/min ... 500 l/min
Ambient temperature	-10 °C ... 60 °C
Maritime classification	See certificate
Mounting position	Any
Symbol	00991452
Operating pressure for entire temperature range	0.2 bar ... 10 bar
Standard flow rate in flow control direction 6 → 0 bar	720 l/min
Standard flow rate in non-return direction at 6 → 0 bar	610 l/min ... 760 l/min
Operating medium	Compressed air as per ISO 8573-1:2010 [7:4:4]
Information on operating and pilot media	Operation with oil lubrication possible (required for further use)
Storage temperature	-10 °C ... 40 °C
Temperature of medium	-10 °C ... 60 °C
Nominal tightening torque	3 Nm
Tolerance for nominal tightening torque	± 10%
Product weight	32 g
Note on materials	RoHS-compliant
Seals material	NBR
Hollow bolt material	Wrought aluminum alloy Anodized
Releasing ring material	POM
Material of adjusting screw	Brass
Swivel joint material	Die-cast zinc