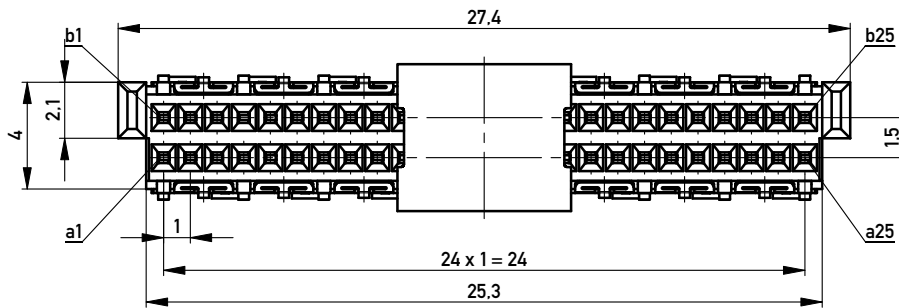
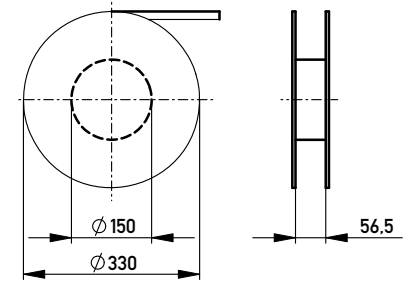
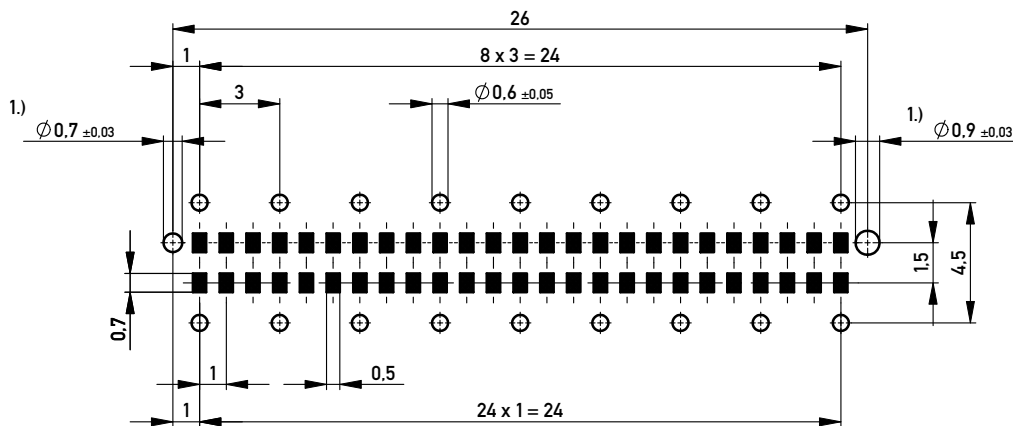


Verpackt in Gurtverpackung - Tape on Reel Packaging
 Verpackungseinheit: 260 Stück - Packaging unit: 260 pcs



Leiterplatten-Layout Vorschlag / PCB-Layout Proposal



1.) Durchmesser des Bohrers / Drill tool

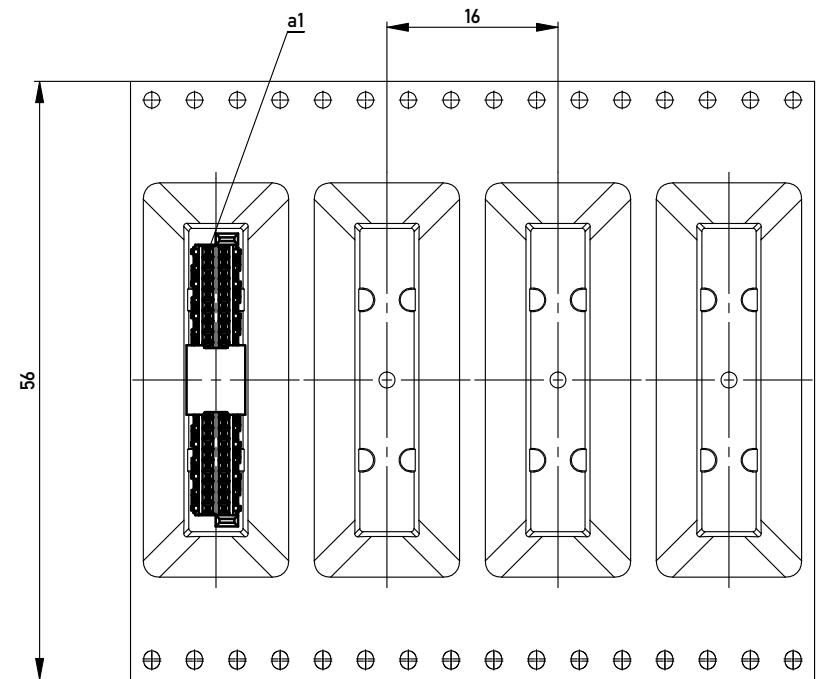
Anforderungsstufe 1
 Performance Level 1

Kontaktbereich vergoldet
 Mating Area gold plating

Anschlussbereich verzinkt 4-6µm
 Terminal Area 4-6µm tin plating

Koplanarität der Anschlüsse ≤ 0,1mm
 Coplanarity Area of Termination ≤ 0,1mm

Abspulrichtung - Reel off Direction



Information:	Tolerances	 All Dimensions in mm	Scale	5:1
	All rights reserved. Only for Information. To ensure that this is the latest version of this drawing, please contact one of the ERNI companies before using.		Designation F08 MSpeed BlindMate 50 THR	
Subject to modification without prior notice. Drawing will not be updated.		www.ERNI.com		354179
a	31.08.2010	Class		MSPEED
Index	Date			I A3

Copyright by ERNI GmbH.
 Proprietary notice pursuant to ISO 16016 to be observed.