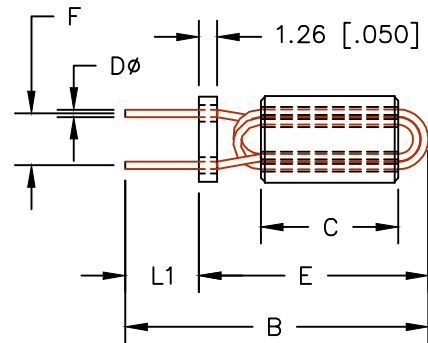
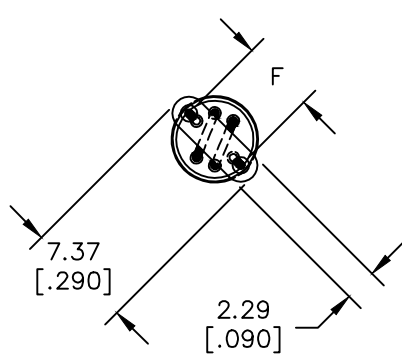
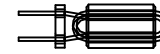


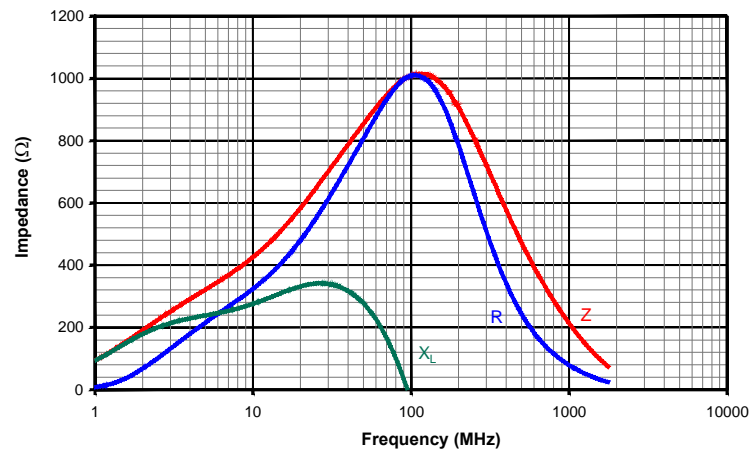
SCALE DRAWING 1:1



ELECTRICAL TESTING

TEST:	Z	Z
# TURNS	3	3
AWG	#24	#24
FREQUENCY	25 MHz	100 MHz
NOMINAL	605 Ω	998 Ω
MINIMUM	- Ω	749 Ω
MAXIMUM	- Ω	- Ω

Z, R, X vs Frequency



NOTES:

1. WIRE: COPPER 24 AWG 0.51 [.0201] DIAMETER.
2. PLATING: 100% TIN 5μ ± 2μ [200 μin ± 80 μin]
3. LEADS:
 - A. LEADS SOLDERABILITY CONFORMS TO MIL-STD-202, METHOD 208.
4. REF. STEWARD CORE P/N 28C0236-000.
5. WEIGHT/1000 1.22 kgs. 2.7 lbs.

UNCONTROLLED DOCUMENT

DIMENSIONS:

A	6.00 [.236]	±	0.20 [.008]
B	20.96 [.825]		MAX
C	10.01 [.394]	±	0.25 [.010]
D	0.51 [.020]		TYP.
E	15.90 [.625]		MAX.
F	5.08 [.200]	±	0.64 [.025]
L1	5.08 [.200]	±	1.27 [.050]

DIMENSIONS ARE IN mm [INCHES].

This print is the property of Laird Tech. and is loaned in confidence subject to return upon request and with the understanding that no copies shall be made without the written consent of Laird Tech. All rights to design or invention are reserved.



S	UPDATE COMPANY LOGO	04/27/15	QIU	PROJECT/PART NUMBER:		REV	PART TYPE:	DRAWN BY:
R	UPDATE COMPANY LOGO	12/16/08	JRK	28C0236-0JW-10		S	ASSEMBLY	DJB
Q	UPDATE COMPANY LOGO	04/16/07	JRK	DATE: 01/28/92		SCALE: 2 : 1		MATERIAL:
P	CHG TOLS ON A DIM ADD ROHS SYMBOL	03/07/07	JRK	CAD #		TOOL # C0236		NiZn Ferrite
N	CHG TOLS ON B DIM TO MAX	04/06/06	JRK	REV				
REV	DESCRIPTION	DATE	INT	28C0236-0JW-10-S				