

## Han-Eco 24B Outd-HSM2-w. SL-M25-cov.-gl.

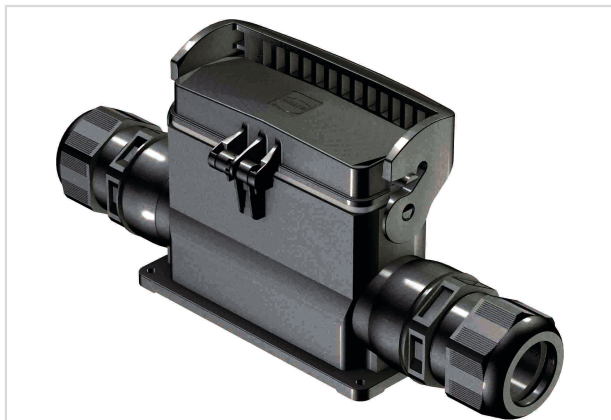


Image is for illustration purposes only. Please refer to product description.

|                    |   |
|--------------------|---|
| Part number        | 19 43 324 0296  |
| Specification      | Han-Eco 24B Outd-HSM2-w. SL-M25-cov.-gl.  |
| HARTING eCatalogue | <a href="https://b2b.harting.com/19433240296">https://b2b.harting.com/19433240296</a> |

### Identification

|                             |  |
|-----------------------------|--|
| Category                    | Hoods/Housings   |
| Series of hoods/housings    | Han-Eco <sup>®</sup> B                                   |
| Type of hood/housing        | Surface mounted housing                                  |
| Description of hood/housing | With thermo-plastic cover<br>With integrated cable gland |

### Version

|              |                      |
|--------------|----------------------|
| Locking type | Single locking lever |
| Size         | 24 B                 |
| Version      | Side entry           |
| Cable entry  | 2x M25               |

### Technical characteristics

|  |                 |
|--|-----------------|
| Limiting temperature                   | -40 ... +125 °C |
| Number of relockings                   | ≥500            |
| Degree of protection acc. to IEC 60529 | IP66            |
| Clamping range                         | 9 ... 17 mm     |

### Material properties

|                         |  |
|-------------------------|--|
| Material (hood/housing) | Polyamide (PA)<br>Fibre-glass reinforced |
| Colour (hood/housing)   | RAL 9005 (jet black)                     |
| Material (seal)         | FPM                                      |
| Colour (seal)           | RAL 7001 (silver-grey)                   |



Pushing Performance

## Material properties

|  |  |
|--|--|
| Material (locking)   | Polyamide (PA)<br>Fibre-glass reinforced               |
| Colour (locking)   | RAL 9005 (jet black)                                   |
| Material flammability class acc. to UL 94                  | V-0  |
| Material flammability class acc. to UL 94 (locking levers) | V-0  |
| RoHS   | compliant with exemption                               |
| RoHS exemptions  | 6(c): Copper alloy containing up to 4 % lead by weight |
| ELV status   | compliant with exemption                               |
| China RoHS   | 50   |
| REACH Annex XVII substances                                | No   |
| REACH ANNEX XIV substances                                 | No   |
| REACH SVHC substances                                      | Yes  |
| REACH SVHC substances                                      | Lead   |

## Specifications and approvals

|                |  |
|----------------|--|
| Specifications | IEC 61984<br>EN 45545-2 R22: HL1, HL2, HL3<br>EN 45545-2 R23: HL1, HL2, HL3<br>EN 45545-2 R24: HL1, HL2, HL3 |
| CE             | Yes  |

## Commercial data

|                                |  |
|--------------------------------|--|
| Packaging size                 | 1  |
| Net weight                     | 370 g                                    |
| Country of origin              | Germany                                  |
| European customs tariff number | 85389099                                 |
| eCl@ss                         | 27440202 Shell for industrial connectors |