

ADSL CPE SIDE SPLITTER
P/N: AD-9063 DATA SHEET



Bothhand USA. e-mail: sales@bothhandusa.com http://www.bothhand.com

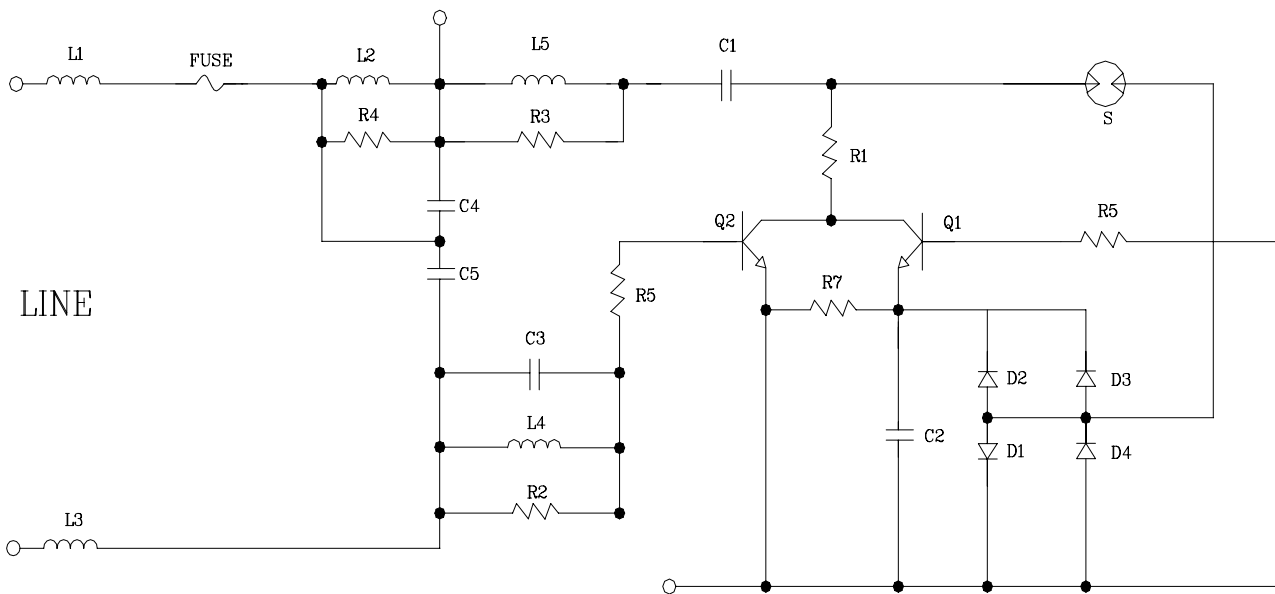
Feature



- For applications where both data and voice are transmitted over the same copper pair.
- Compact package, includes RJ-11 connectors for ease of Installation.
- Will pass only voice band signals while attenuating the higher ADSL data frequency.
- Meets ANSI T1.413 & ITU G.992.1 (G.dmt) requirements.
- Operating Temperature: -10°C to +60.°C.
- Storage Temperature: -25°C to +75°C.

| Electrical Specifications @ 25°C | | | | | |
|---|-------------------|----------|------|-------|-------|
| PARAMETER | FREQUENCY | MIN. | NOM. | MAX. | UNITS |
| Insertion Loss 100Ωline Side 100ΩPhone Side | 30KHz – 1.1MHz | | | -0.25 | dB |
| | 30 KHz | -18 | | | |
| | 100 KHz – 300 KHz | -30 | | | |
| 300 KHz -1.1MHz | -40 | | | | |
| CUTOFF FREQUENCY | 12KHz | 3 | | | |
| Return Loss Referenced (TN12) impedance | 300 Hz – 2000 Hz | -15 | | | |
| | 2000Hz – 3400Hz | -12 | | | |
| | 3400 Hz –10000 Hz | -8 | | | |
| Total DC Resistance | | | | 100 | Ω |

Schematic

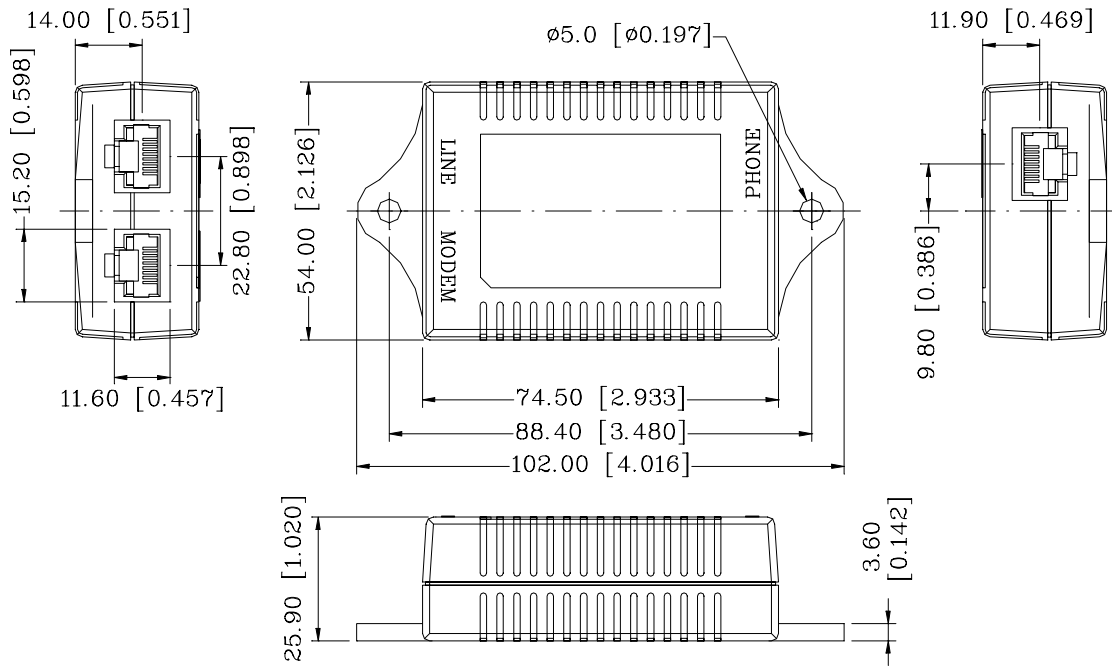


ADSL CPE SIDE SPLITTER
P/N: AD-9063 DATA SHEET



Bothhand USA. e-mail: sales@bothhandusa.com <http://www.bothhand.com>

Mechanical



Units: mm [Inches] Tolerances: xx.x0 \pm 0.25 [0.01]
0.xx \pm 0.05 [0.002]