

PLEASE CHECK WWW.MOLEX.COM FOR LATEST PART INFORMATION

Part Number: [5015712007](#)
Status: **Active**
Overview: [picoclasp](#)
Description: 1.00mm (.039") Pitch Pico-Clasp™ Wire-to-Board PCB Header, Dual Row, Right Angle, 20 Circuits, Lead-free

Documents:

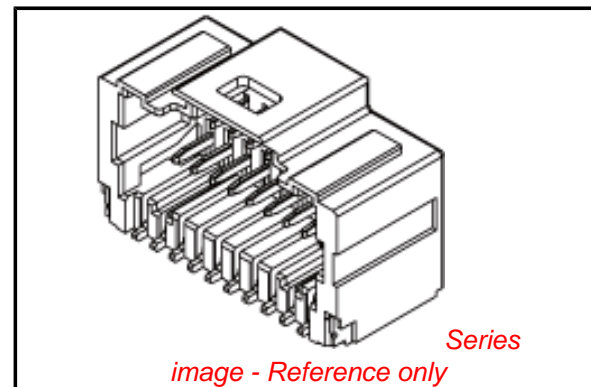
[3D Model](#) [Product Specification PS-501571-001 \(PDF\)](#)
[Drawing \(PDF\)](#) [RoHS Certificate of Compliance \(PDF\)](#)

General

| | |
|----------------|---------------------------|
| Product Family | PCB Headers |
| Series | 501571 |
| Application | Wire-to-Board |
| Overview | picoclasp |
| Product Name | Pico-Clasp™ |

Physical

| | |
|--------------------------------|--------------------------------|
| Breakaway | No |
| Circuits (Loaded) | 20 |
| Circuits (maximum) | 20 |
| Color - Resin | Natural |
| Durability (mating cycles max) | 30 |
| First Mate / Last Break | No |
| Glow-Wire Compliant | No |
| Guide to Mating Part | No |
| Keying to Mating Part | None |
| Lock to Mating Part | Yes |
| Material - Metal | Brass, Phosphor Bronze |
| Material - Plating Mating | Gold |
| Material - Plating Termination | Gold |
| Material - Resin | High Temperature Thermoplastic |
| Number of Rows | 2 |
| Orientation | Right Angle |
| PC Tail Length (in) | 0.000 In |
| PC Tail Length (mm) | 0.00 mm |
| PCB Locator | No |
| PCB Retention | Yes |
| PCB Thickness Recommended (in) | 0.000 In |
| PCB Thickness Recommended (mm) | 0.00 mm |
| Packaging Type | Embossed Tape on Reel |
| Pitch - Mating Interface (in) | 0.039 In |
| Pitch - Mating Interface (mm) | 1.00 mm |
| Pitch - Term. Interface (in) | 0.039 In |
| Pitch - Term. Interface (mm) | 1.00 mm |
| Plating min: Mating (µin) | 4 |
| Plating min: Mating (µm) | 0.1 |
| Plating min: Termination (µin) | 4 |
| Plating min: Termination (µm) | 0.1 |
| Polarized to Mating Part | Yes |
| Polarized to PCB | Yes |
| Shrouded | Yes |
| Stackable | No |
| Surface Mount Compatible (SMC) | Yes |
| Temperature Range - Operating | -40°C to +85°C |
| Termination Interface: Style | Surface Mount |



EU RoHS

**ELV and RoHS
Compliant**
REACH SVHC
 Not Reviewed
Halogen-Free
Status
Not Reviewed

China RoHS



**Need more information on product
environmental compliance?**

Email productcompliance@molex.com
 For a multiple part number RoHS Certificate of Compliance, [click here](#)

Please visit the [Contact Us](#) section for any non-product compliance questions.

Search Parts in this Series

[501571Series](#)

Mates With

[501189](#) Pico-Clasp™ Wire-to-Board Female Housing

Electrical

Current - Maximum per Contact

0.8A, 1A

Voltage - Maximum

50V AC (RMS)/DC

Material Info**Reference - Drawing Numbers**

Packaging Specification

SPK-501571-001

Product Specification

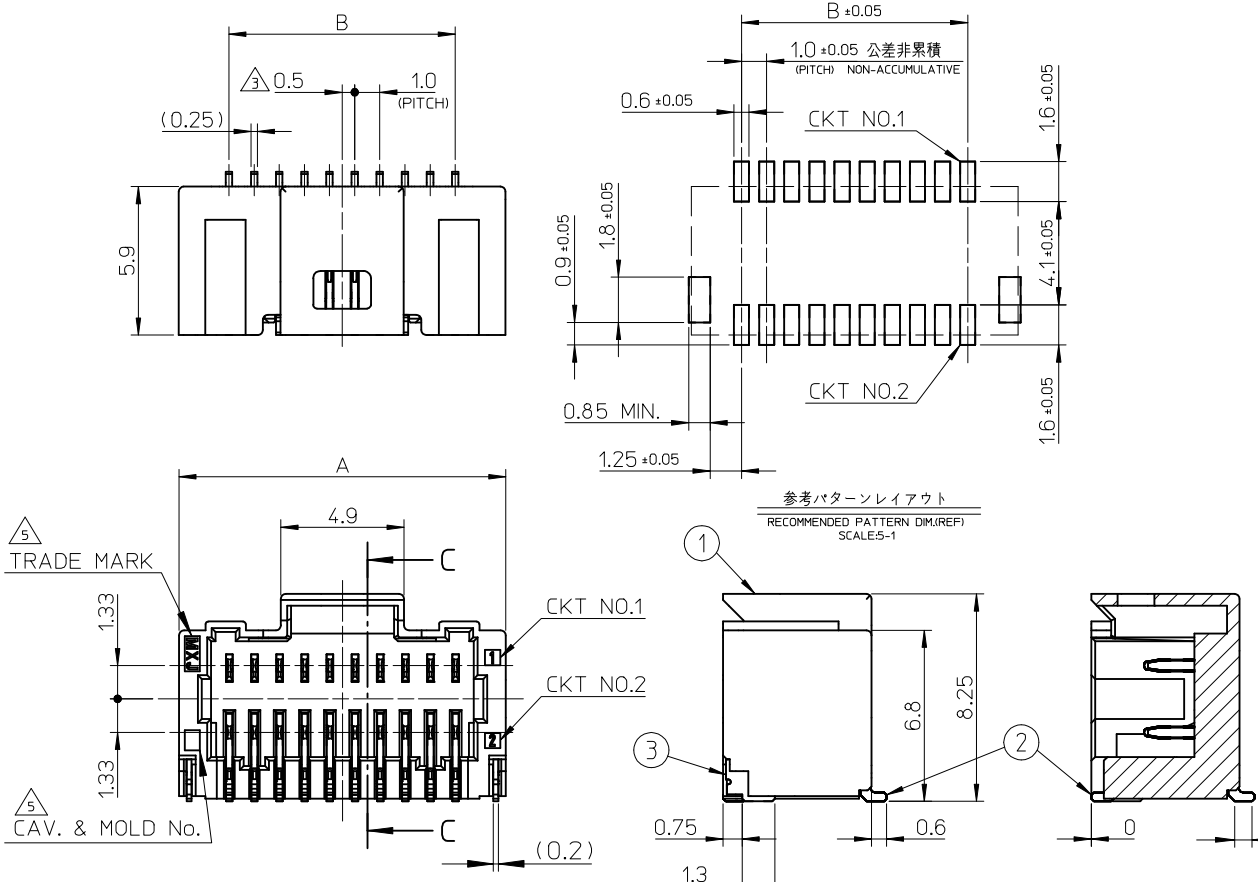
PS-501571-001, RPS-501190-003, RPS-501190-007,
RPS-501190-008, RPS-501331-001, RPS-501571-005,
RPS-501571-006, RPS-501571-007, RPS-501571-008
SD-501571-001, SD-501571-002

Sales Drawing

This document was generated on 05/26/2010

PLEASE CHECK WWW.MOLEX.COM FOR LATEST PART INFORMATION

10 9 8 7 6 5 4 3 2 1



NOTES

1. 嵌合相手: 501189-****
MATE WITH: 501189-****
2. ソルダピン及びネールの平坦度は0.1MAX.
SOLDER PIN AND NAIL COPLANRITY TO BE 0.1MAX.
3. \triangle 極数/2=偶数極の場合に適用
APPLY FOR (CIRCUIT/2=EVEN)
4. 製品番号
MATERIAL No.
501571 - **07
極数
CIRCUIT SIZE
5. \triangle トレードマーク: MXプラス1文字のアルファベットにて構成
但し"J"はJAPANを示す。(例 MXJ)
キャビティ番号: 1桁から2桁の数字にて構成
金型番号: アルファベット1文字にて構成
TRADE MARK: FORMED BY MX AND 1 MORE
LETTER OF ALPHABET, BUT "J" MEANS JAPAN. (e.g. MXJ)
CAVITY No.: FORMED BY 1 - 2 DIGIT NUMBERS.
MOLD No.: FORMED BY 1 LETTER OF ALPHABET.

SECTION C-C

| | | | |
|----------------------------------|----|--------------------|-----|
| 24 | 28 | 501571-5007 | 50 |
| 19 | 23 | 501571-4007 | 40 |
| 14 | 18 | 501571-3007 | 30 |
| 9 | 13 | 501571-2007 | 20 |
| B | A | (EMBOSSED) PACKAGE | CKT |
| | | オーダー番号 ORDER NO. | |
| CONNECTOR SERIES No. 501571-**09 | | | |

| 番号 NO. | 部品 PART | 材質 MATERIAL |
|-----------|----------------------|--|
| ① | ウエハー WAFER | 耐熱ナイロン、UL94V-0、色: 自然色 HEAT RESISTANCE NYLON, UL94V-0, COLOR:NATURAL |
| ② | ソルダーピン SOLDER PIN | リン青銅 PHOSPHOR BRONZE 金メッキ : 0.1 MICRO METER MINIMUM. GOLD PLATING ニッケル下地メッキ : 1 MICRO METER MINIMUM. NICKEL UNDER PLATING |
| ③ | ネイル NAIL | 黄銅 BRASS すずメッキ : 1 MICRO METER MINIMUM. TIN PLATING ニッケル下地メッキ : 1 MICRO METER MINIMUM. NICKEL UNDER PLATING |

| | | | | | | | |
|---|--------------|--|----------------------------|--|---|---------------------------|--|
| REVISED EC NO: J2010-0354 DRWNS:KUROSE 2009/08/31 CHKD:KASAKAWA 2009/08/31 APPR:NUKITA 2009/08/31 | DESCRIPTION | GENERAL TOLERANCES (UNLESS SPECIFIED) | DIMENSION STYLE MM ONLY | SCALE 5:1 | DESIGN UNITS METRIC | THIRD ANGLE PROJECTION | |
| | REV | 10 UNDER ±0.2 | DRAWN BY TRSUZUKI | DATE 2005/02/14 | TITLE 1.0 WIRE TO BOARD CONN. 2-ROW R/A WAFER ASSY -LEAD FREE- | | |
| | | 10 OVER 30 UNDER ±0.25 | CHECKED BY MYAGI | DATE 2005/02/14 | MOLEX INCORPORATED | | |
| | | 30 OVER ±0.3 | APPROVED BY ANODA | DATE 2005/02/14 | SD-501571-001 | | |
| | ANGULAR ±3 ° | DRAFT WHERE APPLICABLE MUST REMAIN WITHIN DIMENSIONS | MATERIAL NO. SEE TABLE | DOCUMENT NO. | SHEET NO. 1 OF 1 | | |
| | | | SIZE A3 | THIS DRAWING CONTAINS INFORMATION THAT IS PROPRIETARY TO MOLEX INCORPORATED AND SHOULD NOT BE USED WITHOUT WRITTEN PERMISSION | | | |

F

E

D

C

B

A

F

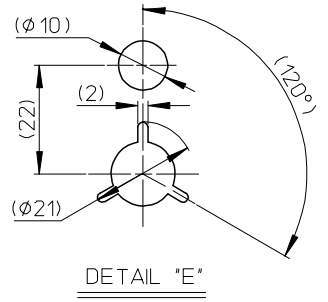
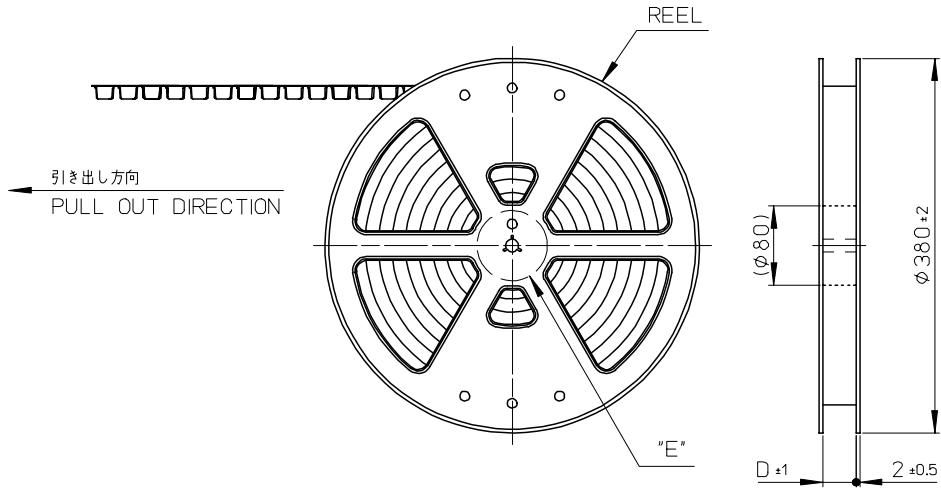
E

D

C

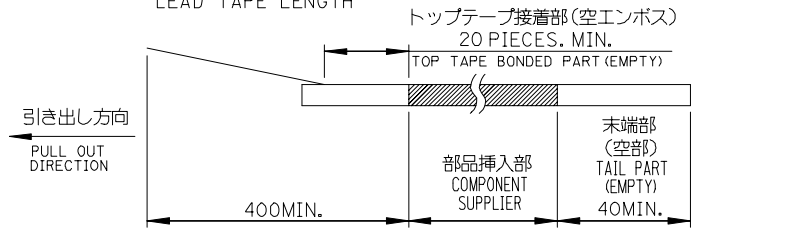
B

A

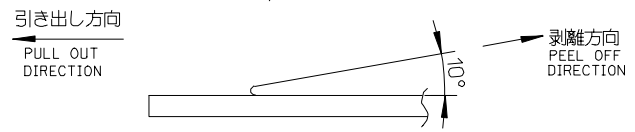


NOTES

- 製品詳細寸法については SD-501571-001 を参照ください。
RE DETAILED DIMENSION, SEE SD-501571-001
- 梱包数量： 800 個/リール
NUMBER OF CONNECTORS： 800 PIECES/REEL
- リードテープ長さ
LEAD TAPE LENGTH



- トップテープの剥離強度： 0.1 ~ 1.3N (10.2 ~ 132.5gf) (剥離方向は下図参照)
PEELING OFF FORCE OF TOP TAPE (PEELING DIRECTION AS SHOWN IN FOLLOWING FIGURE)
尚、本規格値は、出荷時に適用。(但し、輸送時に剥離が発生しないこと)
THIS REQUIREMENT SHOULD BE APPLIED AT SHIPMENT. PEEL OFF SHOULD NOT BE ALLOWED, DURING TRANSPORTATION.



- 材料
MATERIAL
キャリアテープ：ポリプロピレン
CARRIER TAPE: POLYPROPYLENE
トップテープ：PET, PE, REF
TOP TAPE
リール：ポリスチレン (リサイクル材を含む)
REEL: POLYSTYRENE (RECYCLE MATERIAL CONTAINED)

| | | | | | | | | |
|---|---------------------------------------|--|-----------------------------|--|---------------------|---|------------------------|--|
| RELEASED EC NO: J2005-2381 DRAWN: TRSUZUKI 2005/02/15 CHKD: MYAGI 2005/02/15 APPR: ANODA 2005/02/24 REV: 0 | GENERAL TOLERANCES (UNLESS SPECIFIED) | | DIMENSION STYLE MM ONLY | | SCALE --- | DESIGN UNITS METRIC | THIRD ANGLE PROJECTION | |
| | 10 UNDER | ±0.2 | DRAWN BY TRSUZUKI | | DATE 2005/02/14 | TITLE 1.0 WIRE TO BOARD CONN. 2-ROW R/A WAFER ASSY EMBTP PKG -LEAD FREE- | | |
| | 10 OVER 30 UNDER | ±0.25 | CHECKED BY MYAGI | | DATE 2005/02/14 | MOLEX INCORPORATED | | |
| | 30 OVER | ±0.3 | APPROVED BY ANODA | | DATE 2005/02/14 | DOCUMENT NO. SD-501571-002 | | |
| | ANGULAR | ±3 ° | MATERIAL NO. SEE SHEET 2 | | SHEET NO. 1 OF 2 | | SHEET NO. 1 OF 2 | |
| DRAFT WHERE APPLICABLE MUST REMAIN WITHIN DIMENSIONS | | SIZE THIS DRAWING CONTAINS INFORMATION THAT IS PROPRIETARY TO MOLEX INCORPORATED AND SHOULD NOT BE USED WITHOUT WRITTEN PERMISSION | | | | | | |

10 9 8 7 6 5 4 3 2 1

F

E

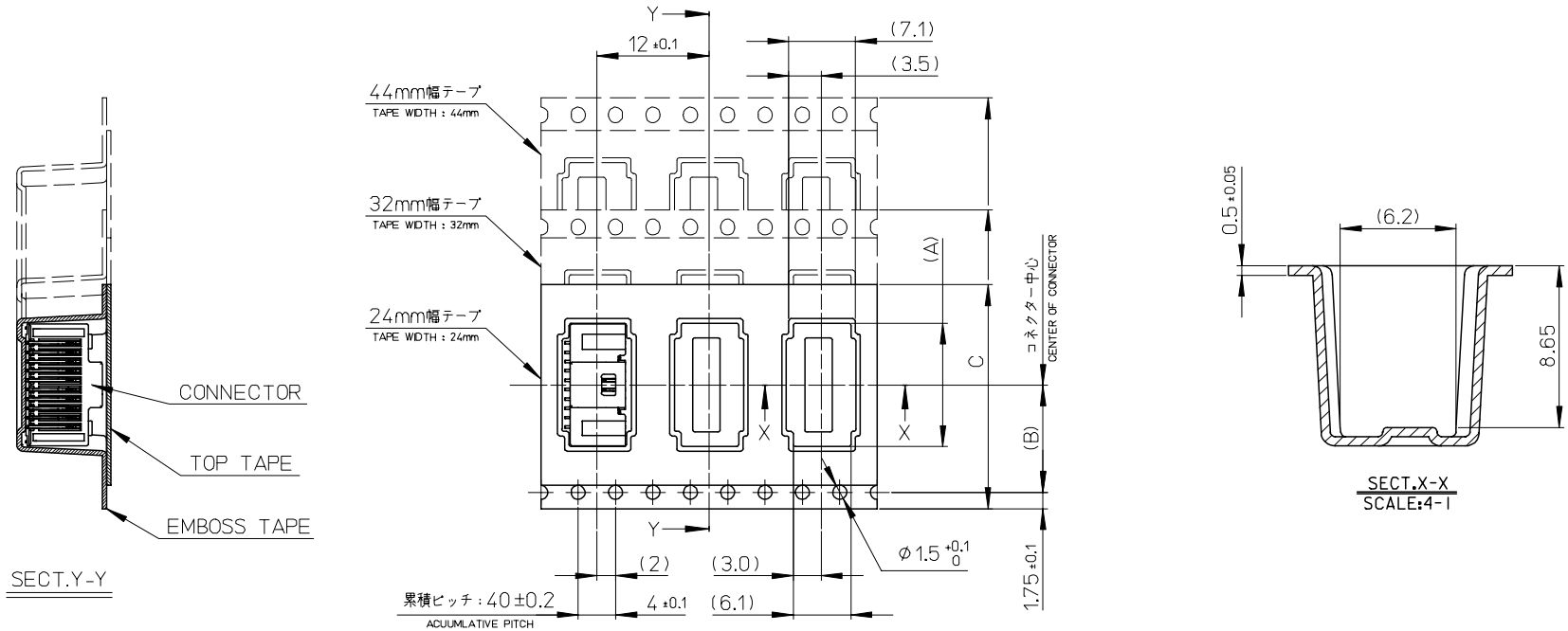
D

C

B

A

引き出し方向
PULL OUT DIRECTION



| | | | | | | |
|------|--------|--------------------|------|-------------|-------------|--------------------|
| 45.5 | 44±0.3 | 20.2 | 28.3 | 501571-5009 | 501571-5007 | 50 |
| | | | 23.3 | 501571-4009 | 501571-4007 | 40 |
| 33.5 | 32±0.3 | 14.2 | 18.3 | 501571-3009 | 501571-3007 | 30 |
| 25.5 | 24±0.3 | 11.5 | 13.3 | 501571-2009 | 501571-2007 | 20 |
| D | C | CARRIER TAPE WIDTH | (B) | (A) | CONNECTOR | MATERIAL NO. CKTS. |

| | | | | | | | |
|---|---------------------------------------|---|----------------------------|--------------------|---|------------------------|------------------------|
| RELEASED EC NO: J2005-2381 DRAWN: TRSUZUKI 2005/02/15 CHKD: MYAGI 2005/02/15 APPR: ANODA 2005/02/24 REV: 0 | GENERAL TOLERANCES (UNLESS SPECIFIED) | | DIMENSION STYLE MM ONLY | | SCALE --- | DESIGN UNITS METRIC | THIRD ANGLE PROJECTION |
| | 10 UNDER | ±0.2 | DRAWN BY TRSUZUKI | DATE 2005/02/14 | TITLE 1.0 WIRE TO BOARD CONN. 2-ROW R/A WAFER ASSY EMBTP PKG -LEAD FREE- | | |
| | 10 OVER 30 UNDER | ±0.25 | CHECKED BY MYAGI | DATE 2005/02/14 | MOLEX INCORPORATED | | |
| | 30 OVER | ±0.3 | APPROVED BY ANODA | DATE 2005/02/14 | DOCUMENT NO. SD-501571-002 | | |
| | ANGULAR ±3° | | MATERIAL NO. SEE CHART | | SHEET NO. 2 OF 2 | | |
| DRAFT WHERE APPLICABLE MUST REMAIN WITHIN DIMENSIONS | | THIS DRAWING CONTAINS INFORMATION THAT IS PROPRIETARY TO MOLEX INCORPORATED AND SHOULD NOT BE USED WITHOUT WRITTEN PERMISSION | | | | | |

9

8

7

6

5

4

3

2