

# RL-1507

## MINI-INDUCTORS CONFORMALLY COATED

### DESCRIPTION

- Conformally Coated Mini-Inductor

### ENVIRONMENTAL DATA

- Storage temperature range:  
-55°C to +130°C
- Operating temperature range:  
-40°C to +130°C

### PACKAGING INFORMATION

- Packaging information: pg. 507

### FEATURES & APPLICATIONS

- Have high Q and low distributed capacity
- Excellent for use where space, weight and size is a factor
- Suitable for automatic PCB insertion
- Standard industry color codes identify values

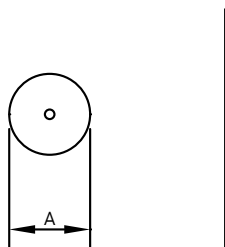
Verify operation with sample in actual circuit. Order samples at [www.rencousa.com](http://www.rencousa.com).

### MECHANICAL DIMENSIONS

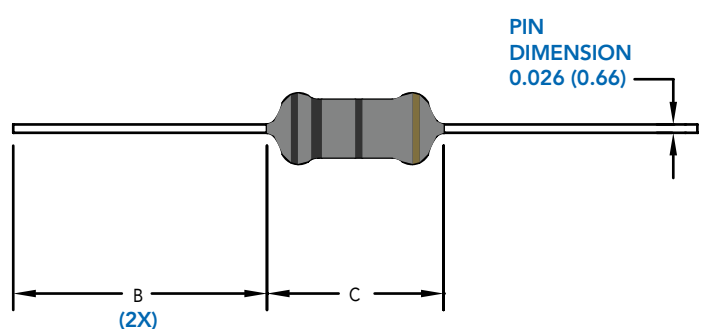
U.S. Standard (mm)

PART NUMBER	A (MAX.)	B (MIN.)	C (MAX.)	PART WEIGHT
RL-1507	0.100 (2.540)	0.850 (21.590)	0.280 (7.112)	0.30g (0.011oz)

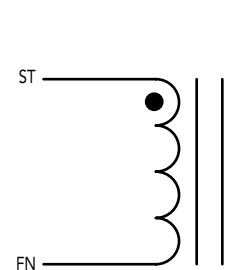
FRONT VIEW



SIDE VIEW



SCHEMATIC



**RENCO ELECTRONICS INC.**

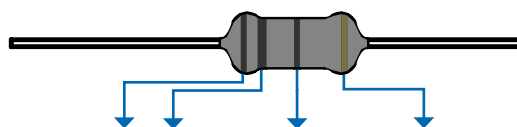
595 International Place, Rockledge, FL 32955-4200 USA • [www.rencousa.com](http://www.rencousa.com) • ISO 9001 Certified  
Toll Free Engineering Hot Line: 800.645.5828 • P: 321.637.1000 • F: 321.637.1600



# RL-1507

Renco Part No. RL-1507	Ind (μH)	DCR Max. (Ohms)	Q Min	MRF (MHz)	SRF (MHz) Min.	Isat (mA)
RL-1507-.22	0.22	0.40	35.0	25.2	150.0	400.0
RL-1507-.27	0.27	0.43	35.0	25.2	150.0	380.0
RL-1507-.33	0.33	0.48	35.0	25.2	150.0	370.0
RL-1507-.39	0.39	0.51	35.0	25.2	150.0	350.0
RL-1507-.47	0.47	0.56	40.0	25.2	150.0	330.0
RL-1507-.56	0.56	0.61	40.0	25.2	150.0	320.0
RL-1507-.68	0.68	0.67	40.0	25.2	150.0	310.0
RL-1507-.82	0.82	0.74	40.0	25.2	150.0	290.0
RL-1507-1.0	1.00	0.80	50.0	25.2	150.0	270.0
RL-1507-1.2	1.20	0.90	50.0	7.96	144.0	260.0
RL-1507-1.5	1.50	1.00	50.0	7.96	131.0	250.0
RL-1507-1.8	1.80	1.10	50.0	7.96	121.0	240.0
RL-1507-2.2	2.20	1.20	50.0	7.96	110.0	230.0
RL-1507-2.7	2.70	1.30	50.0	7.96	100.0	220.0
RL-1507-3.3	3.30	1.40	50.0	7.96	94.0	210.0
RL-1507-3.9	3.90	1.60	50.0	7.96	65.0	200.0
RL-1507-4.7	4.70	1.70	50.0	7.96	56.0	190.0
RL-1507-5.6	5.60	1.90	50.0	7.96	48.0	180.0
RL-1507-6.8	6.80	2.00	50.0	7.96	37.0	175.0
RL-1507-8.2	8.20	2.20	50.0	7.96	25.0	165.0

Renco Part No. RL-1507	Ind (μH)	DCR Max. (Ohms)	Q Min	MRF (MHz)	SRF (MHz) Min.	Isat (mA)
RL-1507-10	10.0	2.5	50.0	7.96	21.0	160.0
RL-1507-12	12.0	2.5	50.0	2.52	19.0	150.0
RL-1507-15	15.0	2.8	50.0	2.52	17.0	145.0
RL-1507-18	18.0	3.1	50.0	2.52	13.0	140.0
RL-1507-22	22.0	3.4	50.0	2.52	9.60	130.0
RL-1507-27	27.0	3.8	50.0	2.52	7.20	125.0
RL-1507-33	33.0	4.1	50.0	2.52	6.30	120.0
RL-1507-39	39.0	4.5	50.0	2.52	6.30	115.0
RL-1507-47	47.0	4.9	50.0	2.52	6.30	110.0
RL-1507-56	56.0	5.3	50.0	2.52	6.20	105.0
RL-1507-68	68.0	5.8	50.0	2.52	5.70	100.0
RL-1507-82	82.0	6.3	50.0	2.52	5.30	95.0
RL-1507-100	100.0	7.0	50.0	2.52	4.80	90.0
RL-1507-120	120.0	13.0	50.0	0.796	3.80	90.0
RL-1507-150	150.0	15.0	50.0	0.796	3.50	85.0
RL-1507-180	180.0	16.0	50.0	0.796	3.30	80.0
RL-1507-220	220.0	17.0	50.0	0.796	3.00	75.0
RL-1507-270	270.0	19.0	50.0	0.796	2.80	65.0
RL-1507-330	330.0	20.0	50.0	0.796	2.60	60.0
RL-1507-390	390.0	22.0	50.0	0.796	2.40	55.0
RL-1507-470	470.0	24.0	50.0	0.796	2.25	55.0
RL-1507-560	560.0	26.0	50.0	0.796	2.10	50.0
RL-1507-680	680.0	28.0	50.0	0.796	1.95	45.0
RL-1507-820	820.0	30.0	50.0	0.796	1.85	40.0
RL-1507-1000	1000.0	33.0	50.0	0.796	1.40	40.0



Color	Nominal Inductance (μH)			Tolerance
	First figure	Second figure	Decade Power Multiplier	
Black	0		1	±20%
Brown	1		10	
Red	2		100	
Orange	3		1000	
Yellow	4		--	
Green	5		--	
Blue	6		--	
Purple	7		--	
Grey	8		--	
White	9		--	
Gold	--		0.1	±5%
Silver	--		0.01	±10%

#### NOTES:

1. ELECTRICAL SPECIFICATIONS MEASURED AT 25°C
2. Isat - DC CURRENT THAT WILL CAUSE INDUCTANCE TO DROP BY 5%
3. INDUCTANCE TESTED AT 10 kHz, 0.1 Vrms
4. MRF = Q TEST MEASURING FREQUENCY



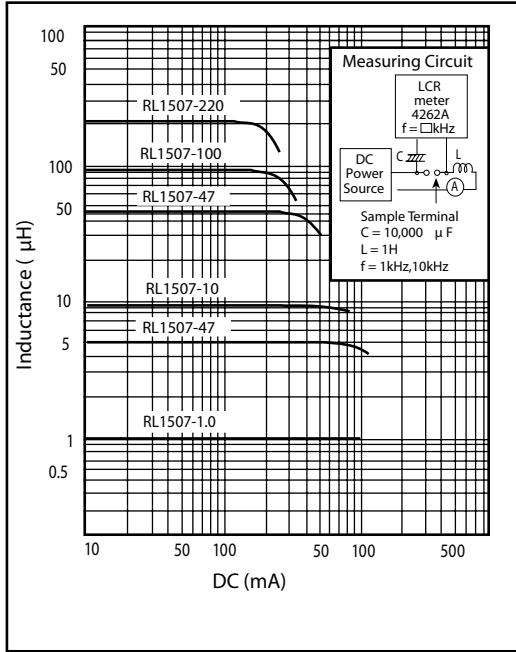
**RENCO ELECTRONICS INC.**

595 International Place, Rockledge, FL 32955-4200 USA • www.rencousa.com • ISO 9001 Certified  
Toll Free Engineering Hot Line: 800.645.5828 • P: 321.637.1000 • F: 321.637.1600

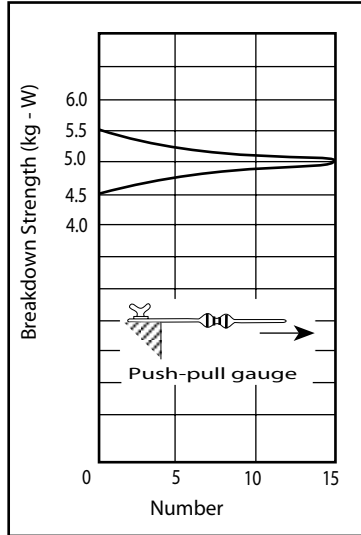


# RL-1507

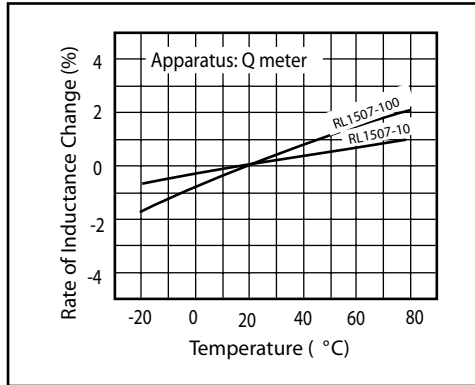
DC Characteristics



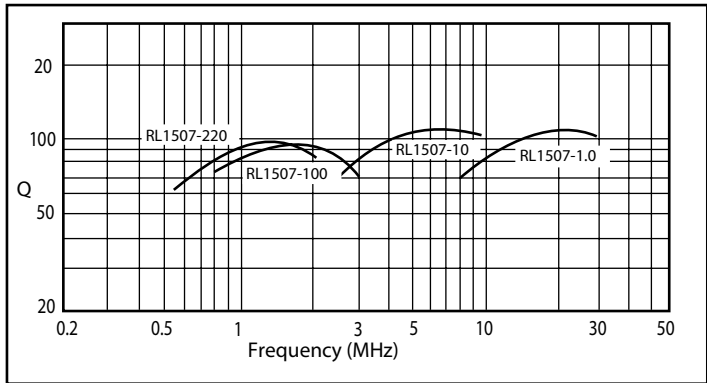
Tensile Strength



Temperature Characteristics



Q-Frequency Characteristics



**RENCO ELECTRONICS INC.**

595 International Place, Rockledge, FL 32955-4200 USA • www.rencousa.com • ISO 9001 Certified  
Toll Free Engineering Hot Line: 800.645.5828 • P: 321.637.1000 • F: 321.637.1600

