

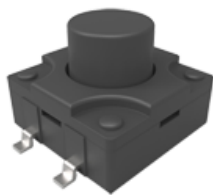
TACT SWITCH

Operation: SMT/贴片式 大型防水 轻触开关 [柄长/操作力可定制]



LTEM NO.: TS-1103E-** ** (Series)

(L5.20mm × W5.20mm TACT-SWITCH)



表面贴装 SMT

正向操作 DOWN

精密部品 NICETY

可靠 STABILIZE

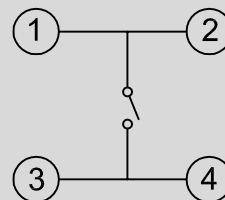
適合環保 RoHS

Technical parameter

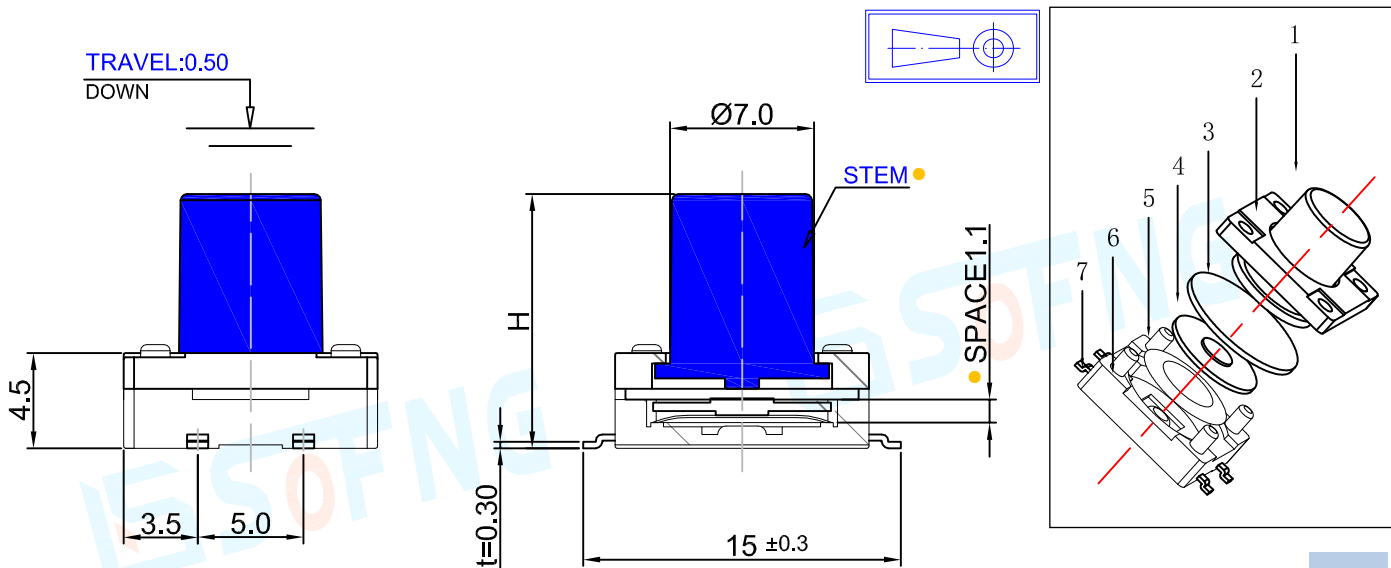
PROJECT	LEVEL	A[better product]	B[average product]
Electrical Properties	Contact Rating	25mA, 24V DC	
	Initial Contact Resistance	50mΩ max.	
Durable Performance	Insulation Resistance	100MΩ min.500V DC	Skey/PD: 100MΩ min.300V DC
	Withstand Voltage	300V AC for 1 minute	250 V AC for 1 minut
Storage temp.	There No Load	150,000 Cycles	100,000 Cycles
	Rated Load	125,000 Cycles	85,000 Cycles
Operating Force		-35℃~+75℃(Operating Temp:)	
Heat Rrsistance		1.6 / 2.6N. (1N.=100gram-force)	
		IR Reflow:255℃, 5sec. Manual:350℃, 3sec.	

Material declaration		
No.	NAME	Description
① A	拨柄	PA6T(Black)耐高温尼龙
② B	盖板	PA6T(Black)耐高温尼龙
③ C	覆膜	涂胶硅胶层
④ D	触点	PA6T(Black)耐高温尼龙
⑤ E	簧片	镀银&不锈钢 SUS304
⑥ F	基座	PA6T(Black)耐高温尼龙
⑦ G	嵌件	C5191R-H (t=0.30mm)镀银磷铜

CIRCUIT DIAGRAM



Unit:mm



H
6.0
6.5
7.0
7.5
8.0
~
19.0

P.C.B LAYOUT