

**20 dB, Bi-Directional Coupler,
1 - 1000 MHz**

**CH-132
V3**

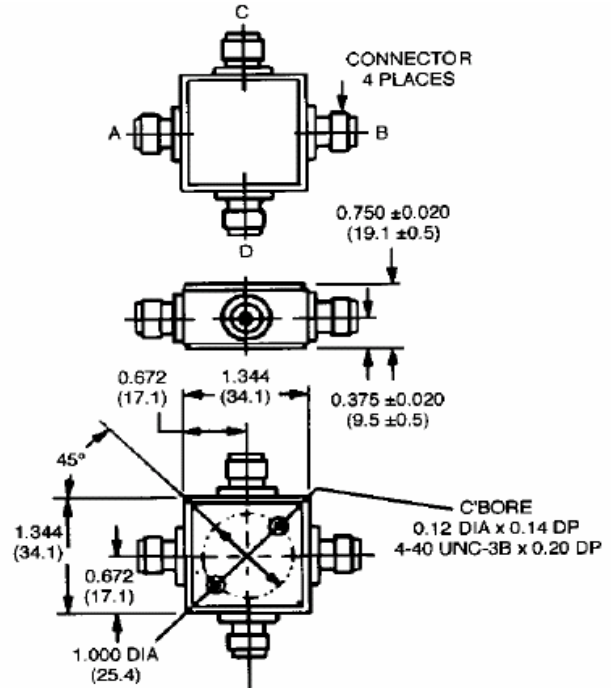
Features

- Broad Frequency Range
- Constant Coupling—Within ± 0.5 dB Max
- VSWR: 1.3:1 Max
-

Description

Bi-Directional Couplers offer the ability to couple the power in two directions while maintaining directivity.

C-8



Dimensions in () are in mm.
Unless Otherwise Noted: .xxx = ± 0.015 (x = ± 0.4)
WEIGHT (APPROX.): 2.5 OUNCES 71 GRAMS

Electrical Specifications¹: T_A = -55°C to +85°C

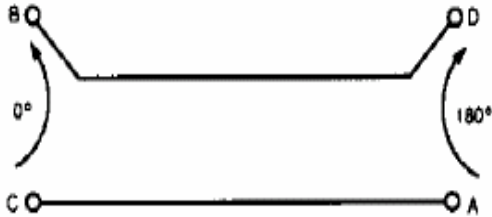
Parameter	Test Conditions	Frequency	Units	Min	Typ	Max
Coupling	Input to Output	1-1000 MHz	dB	19.0	20.0	21.0
Coupling Flatness	—	10 - 500 MHz	dB	—	—	± 0.25
		1 - 1000 MHz	dB	—	—	± 0.5
VSWR	All Ports	10 - 500 MHz	Ratio	—	—	1.2:1
		1 - 1000 MHz	Ratio	—	—	1.3:1
Directivity	Both Directions	10 - 500 MHz	dB	25	—	—
		1 - 1000 MHz	dB	20	—	—
Main Line Loss ²	—	10 - 500 MHz	dB	—	—	0.5
		1 - 1000 MHz	dB	—	—	0.7

1. All specifications apply with 50 ohm source and load impedance.
2. Includes theoretical power split.
This product contains elements protected by United States Patent number 3,426,298.

**20 dB, Bi-Directional Coupler,
1 - 1000 MHz**

**CH-132
V3**

Functional Diagram



Ordering Information

Part Number	Package
CH-132 BNC	Connectorized
CH-132 N	Connectorized
CH-132 SMA	Connectorized
CH-132 TNC	Connectorized

Typical Performance Curves

