

INTRODUCTION



0.50mm (.020") Pitch Easy-On™ SMT FFC Connectors for LVDS

Series 502231, 502244

Molex's new 0.50mm pitch LVDS SMT FFC connectors include special grounding techniques to provide superior noise suppression and signal line impedance control for high frequency, low power LVDS applications such as flat panel display TVs and gaming consoles.

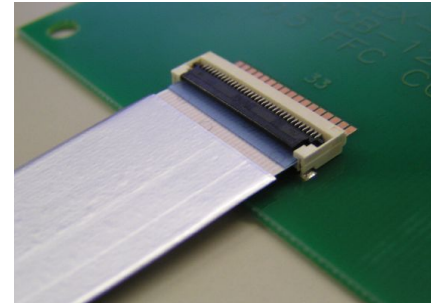
The connector design includes wide, robust grounding terminals that provide strong PCB retention and a stable ground plane. On the vertical version the ground terminals also serve as the main solder tabs, which saves space and eliminates the need for extra solder tabs on each connector end.

Both vertical and right angle versions are offered to accommodate cable placement on any part of the board. The Easy-On™ actuator further facilitates cable insertion and retention.

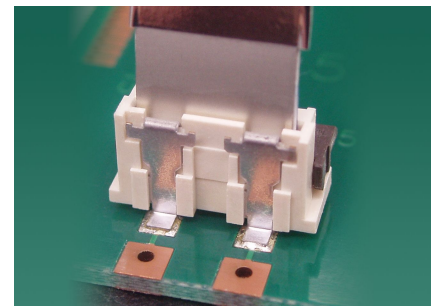
These connectors support 100-Ohm impedance designs for up to 1.25 Gbps.

Specifications:

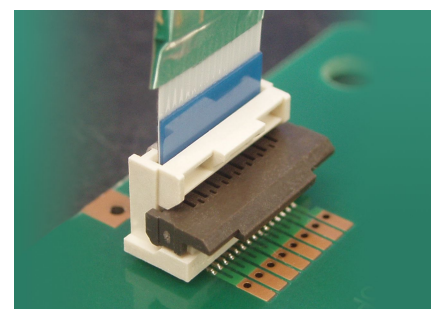
- Current: 0.4A
- Voltage: 50V
- Contact Resistance: 40 milliohms max.
- Dielectric Withstanding Voltage: 250V
- Insulation Resistance: 50 Megohms min.
- Operating Temperature: -20 to +85°C
- Flammability: UL 94V-0
- Packaging: Embossed Tape on Reel



Right Angle

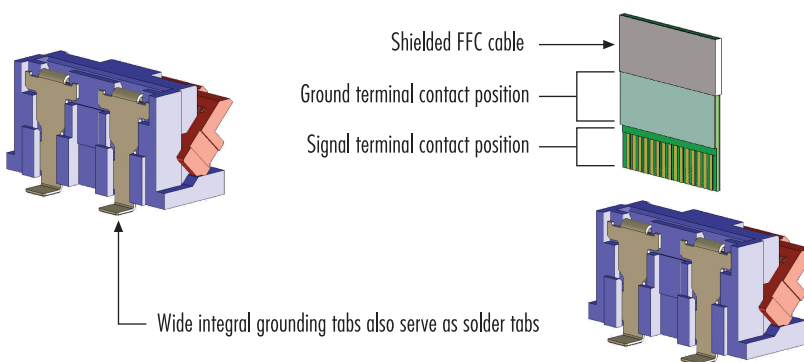


Vertical - Back View



Vertical - Front View (Actuator Closed)

Features	Benefits
• Grounding terminals	• Provide noise suppression and good signal integrity
• Wide base on grounding terminals	• Grounding support, PCB retention
• Easy-On™ actuator	• Facilitates cable insertion
• Wide, flat actuator top	• Stable pick-and-place area
• Reduced component usage	• Improved cost and lead-time



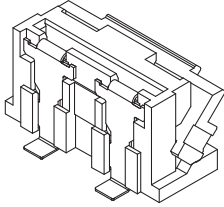
MARKETS AND APPLICATIONS

- PDP/LCD TVs
- Game consoles
- Car navigation
- Any high-frequency, low power application

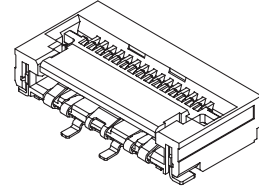


molex® **0.50mm (.020") Pitch**
Easy-On™ SMT FFC
Connectors for LVDS

Series **502231, 502244**



Vertical Type



Right Angle Type

Order No.	Circuits
502231-1500	15
502231-3300	33

Order No.	Circuits
502244-1530	15
502244-3330	33

molex®
 one company › a world of innovation

Americas Headquarters
 2222 Wellington Ct,
 Lisle, Illinois 60532 USA
 Tel: 1-800-78MOLEX
 amerinfo@molex.com

Asia Pacific North Headquarters
 Yamato, Kanagawa, Japan
 Tel: 81-46-265-2325
 apninfo@molex.com

Asia Pacific South Headquarters
 Jurong, Singapore
 Tel: 65-6-268-6868
 apsinfo@molex.com

European Headquarters
 Munich, Germany
 Tel: 49-89-413092-0
 euroinfo@molex.com

Corporate Headquarters
 2222 Wellington Ct,
 Lisle, Illinois 60532 USA
 Tel: 630-969-4550

Visit our website at www.molex.com