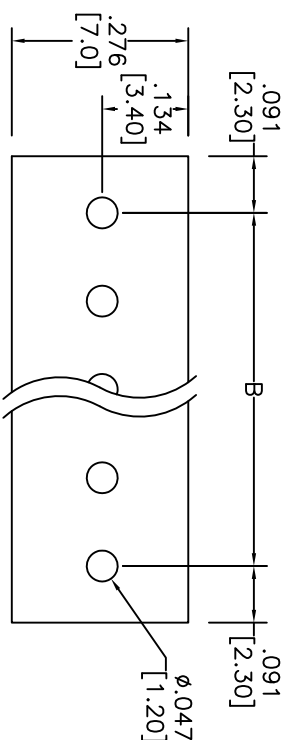
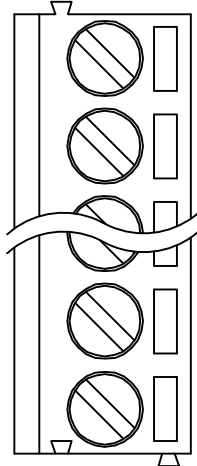
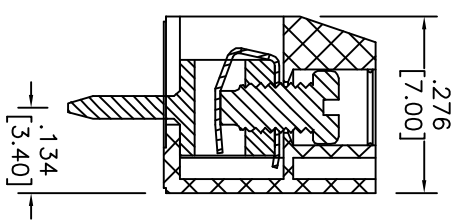
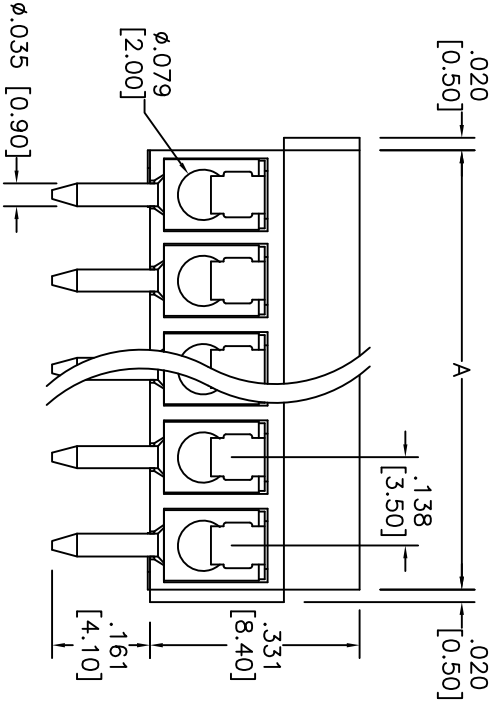


Rev	AWO #	Description	Date	Appr
-		RELEASED	8/05/10	

APPROVED: \_\_\_\_\_  
 DATE: \_\_\_\_\_ TITLE: \_\_\_\_\_



RECOMMENDED PCB LAYOUT



**SPECIFICATIONS:**

- Material: Insulator: Polyamide, glass filled, rated UL 94V-0
- Insulator color: Green
- Contact: Brass, Tin plated.
- Terminal Screw: Steel
- Wire guard: Stainless Steel
- Electrical:

- Operation voltage: 125 VAC max
- Current rating: 10 Amps max per Pole
- Contact resistance: 20 mohms max
- Insulation resistance: 5000 Mohms min@ 1000V
- Dielectric withstanding voltage: 1500 VAC for 1 minute
- Mechanical:
- Screw Torque: 1.5 Kgf-cm (max.)
- Wire Range: 16-26Awg.
- Environmental:
- Operating temperature: -33°C to +120°C
- Lead free, RoHS compliant.
- Recommended soldering temp: 235°C for 5 sec.



A = .138 [3.50] x No. of Positions  
 B = .138 [3.50] x No. of Spaces

UNLESS OTHERWISE SPECIFIED	
ALL DIMENSIONS ARE MM [INCHES]	
TOLERANCES: EXCEPT AS NOTED	
INCHES	HOLDS
.X ± .10	ØXX ± .10
.XX ± .020	ØXXX ± .015
.XXX ± .015	ØXXXX ± .010
APPROVALS	DATE
DRAWN	DY
CHECKED	
APPROVED	

**ADAM TECH**  
 909 Rahway Avenue, Union, NJ 07083  
 Phone: 908-687-5000 Fax: 908-687-5710

TITLE: EURO TERMINAL BLOCK, VERTICAL  
 .138 [3.50] PITCH, PCB TYPE, COLOR GREEN

SIZE	PART NO.	REV.
X	EBC-XXA-GRN	-
REF: S00007	SCALE: NTS	SHEET 1 OF 1

6 5 4 3 2 1