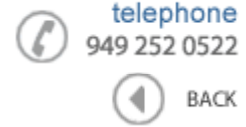




**Data Sheet**

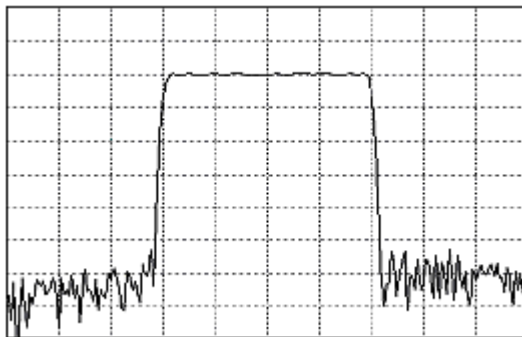


Product Category: IF SAW Filter

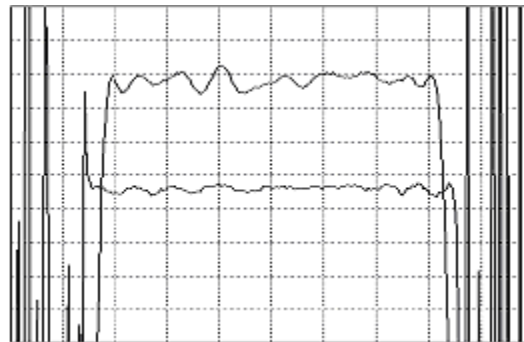
Part Number: 820-IF70.0M-HR      Package: 20.2 x 12.6 Thru Hole      Application: Base Station & Repeater      Last Modified: May 30 2003

TYPE :  
70.0 MHz Bandpass Filter  
19.5 MHz Bandwidth

PART NUMBER :  
**820-IF70.0M-HR**



Horizontal : 5.0 MHz/Div  
Vertical : 10 dB/Div



Horizontal : 3.0 MHz/Div  
Vertical : 1 dB/Div  
Vertical : 100 ns/Div

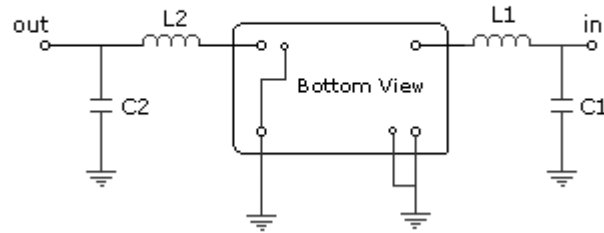
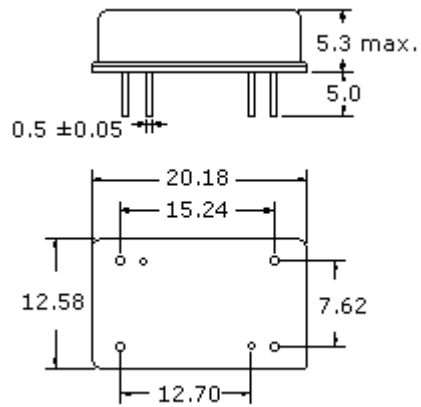
**OPERATING CONDITIONS / ELECTRICAL CHARACTERISTICS**

PARAMETERS	Minimum	Typical	Maximum	Units
Center Frequency	69.94	70.00	70.06	MHz
Insertion Loss	-	24.0	26.0	dB
1dB Bandwidth	19.00	19.15	-	MHz
3dB Bandwidth	19.50	19.60	-	MHz
40dB Bandwidth	-	21.45	21.70	MHz
Passband Ripple	-	0.8	1.0	dB
Group Delay Variation	-	30	80	nsec
Absolute Delay	-	1.98	-	µsec
Ultimate Rejection	50	55	-	dB
Substrate Material	-	LN	-	-
Ambient Temperature	-	25	-	°C

\* Custom SAW IF Filters available. Contact Oscilent for assistance.

**PACKAGE OUTLINE (mm)**

**TEST FIXTURE**



L1 = 150nH      C1 = 0pF  
 L2 = 220nH      C2 = 43pF  
 Source/Load Impedance = 50 ohms

**Oscilent Corporation** - CALL **949.252.0522**

17962 Sky Park Circle, Building D, Irvine, CA 92614, USA  
 Fax: 949.252.0599, E-Mail: Sales@Oscilent.com

**Part No.:** 820-IF70.0M-HR