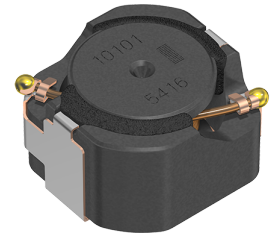


CLF12577NIT-151M-D



|                     |  |
|---------------------|--|
| <b>Applications</b> | Automotive Grade   |
| <b>Feature</b>      | <div style="border: 1px solid black; padding: 2px; display: inline-block; margin-bottom: 2px;">AEC-Q200</div> AEC-Q200<br><div style="border: 1px solid black; padding: 2px; display: inline-block; margin-bottom: 2px; background-color: #f8d7da;">Wire Wound</div> Wire Wound<br><div style="border: 1px solid black; padding: 2px; display: inline-block; margin-bottom: 2px; background-color: #d4edda;">Shield</div> Magnetic Shield<br><div style="border: 1px solid black; padding: 2px; display: inline-block; margin-bottom: 2px; background-color: #d4edda;">Ferrite Core</div> Ferrite Core |
| <b>Series</b>       | CLF-NI-D   |
| <b>Status</b>       | Production   |



| Size                         |                 |
|------------------------------|-----------------|
| Length(L)                    | 12.80mm ±0.30mm |
| Width(W)                     | 12.50mm ±0.30mm |
| Thickness(T)                 | 7.70mm ±0.30mm  |
| Recommended Land Pattern (A) | 4.50mm Nom.     |
| Recommended Land Pattern (B) | 6.20mm Nom.     |
| Recommended Land Pattern (C) | 4.20mm Nom.     |

| Electrical Characteristics              |                      |
|---|----------------------|
| Inductance                              | 150µH ±20% at 100kHz |
| Rated Current (L Change) [Typ.]         | 2.4A (30% Down)      |
| Rated Current (L Change) [Max.]         | 1.8A (30% Down)      |
| Rated Current (Temperature Rise) [Typ.] | 2.1A (40°C Rise)     |
| Rated Current (Temperature Rise) [Max.] |                      |
| DC Resistance [Typ.]                    | 170mΩ                |
| DC Resistance [Max.]                    | 204mΩ                |
| Self Resonant Frequency [Min.]          |                      |
| Self Resonant Frequency [Typ.]          |                      |
| Q [Min.]                                |                      |
| Q [Typ.]                                |                      |

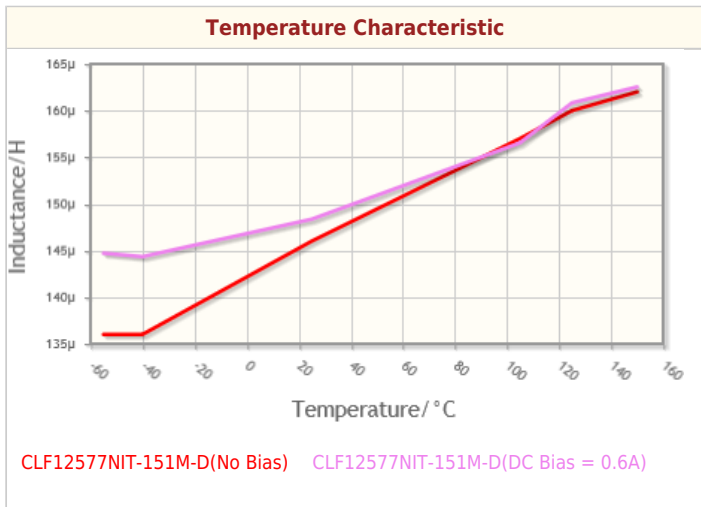
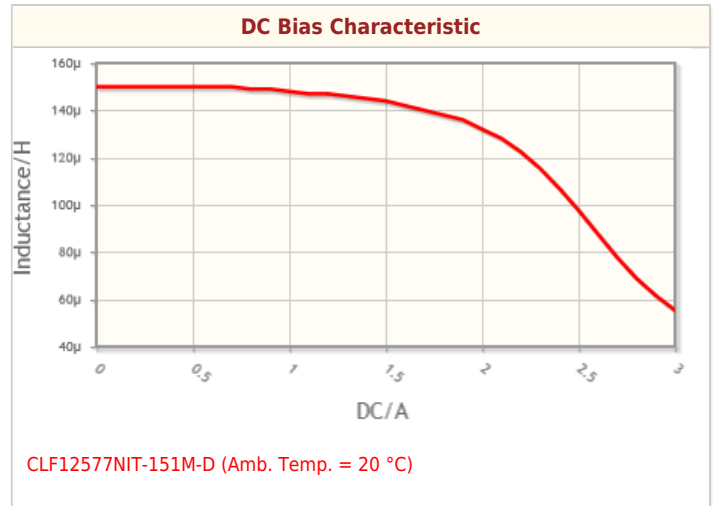
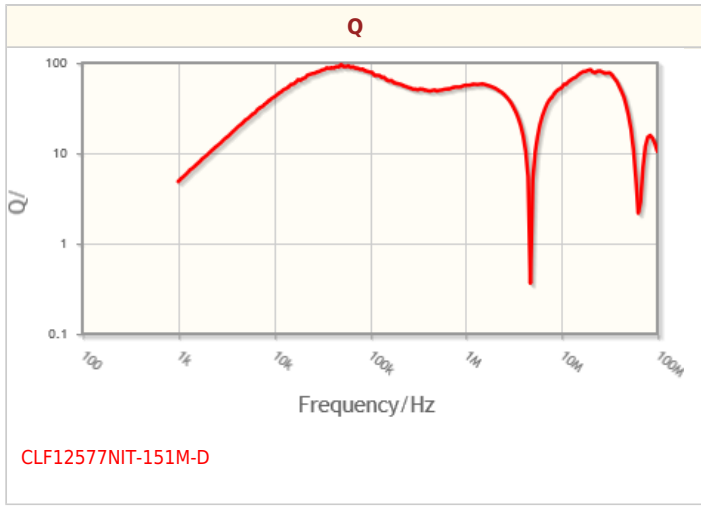
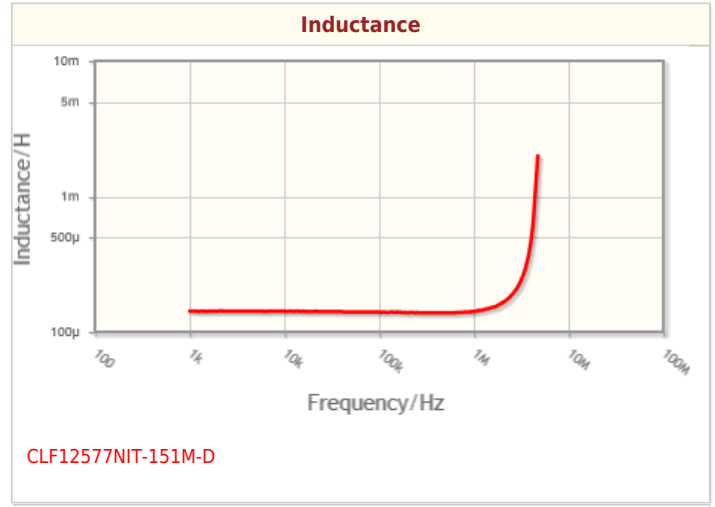
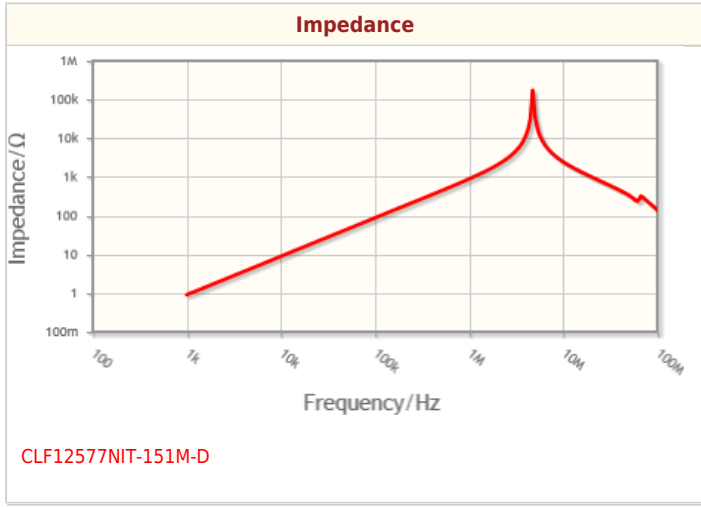
| Other   |                                      |
|---|--------------------------------------|
| Operating Temp. Range (Including Self-Temp. Rise) | -55 to 150°C                         |
| Soldering Method                                  | Reflow<br>Iron Soldering             |
| AEC-Q200  | Yes                                  |
| Packing   | Blister (Plastic)Taping [330mm Reel] |
| Package Quantity                                  | 500pcs                               |
| Weight  | 4g                                   |

! Images are for reference only and show exemplary products.  
 ! This PDF document was created based on the data listed on the TDK Corporation website.  
 ! All specifications are subject to change without notice.

CLF12577NIT-151M-D



Characteristic Graphs(This is reference data, and does not guarantee the products characteristics.)

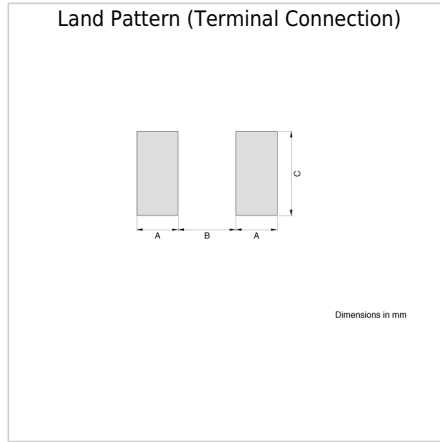
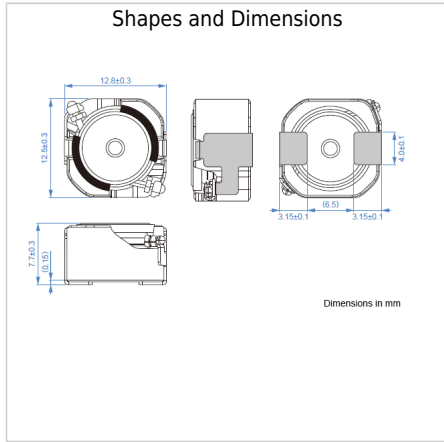


! Images are for reference only and show exemplary products.  
! This PDF document was created based on the data listed on the TDK Corporation website.  
! All specifications are subject to change without notice.

CLF12577NIT-151M-D



## Associated Images



! Images are for reference only and show exemplary products.  
! This PDF document was created based on the data listed on the TDK Corporation website.  
! All specifications are subject to change without notice.