

4

3

2

1


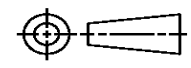
THIS DRAWING IS UNPUBLISHED. RELEASED FOR PUBLICATION
© COPYRIGHT ALL RIGHTS RESERVED.

LOC		DIST		REVISIONS			
P	LTR	DESCRIPTION		DATE	DWN	APVD	
	N4	ECR-14-001901		01APR2014	GK	HMR	

REPLACED BY OCEAN STYLE APPLICATOR PART NUMBER 2151698-2

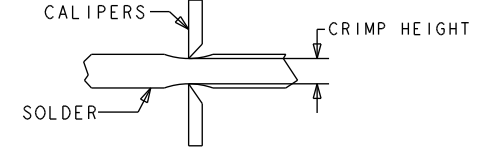
FOR REPLACEMENT PARTS FOR APPLICATOR 567041
REFER TO ADDITIONAL PAGE(S). SPARE PARTS KIT (IF LISTED)
WILL REMAIN AVAILABLE.

THE REPLACEMENT OCEAN STYLE APPLICATOR HAS THE
SAME TERMINATOR/PRESS INTERFACE AS APPLICATOR
567041

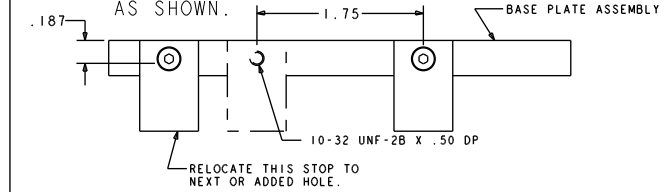
THIS DRAWING IS A CONTROLLED DOCUMENT.		DWN	GOPALAKRISHNA HV			TE Connectivity			
DIMENSIONS:		CHK	RAGHAVENDRA			NAME			
		TOLERANCES UNLESS OTHERWISE SPECIFIED:		APVD	SIDE FEED HDM APPLICATOR				
		0 PLC ±	1 PLC ±	RAGHAVENDRA		PRODUCT SPEC			
MATERIAL		2 PLC ±	3 PLC ±	APPLICATION SPEC		SIZE	CAGE CODE	DRAWING NO	RESTRICTED TO
FINISH		4 PLC ±	ANGLES ±	WEIGHT		A3		©- 567041	
				CUSTOMER ACCESSIBLE PRODUCTION DRAWING		SCALE	SHEET 1 OF 3	REV N4	

PART NUMBER	REV	FIRST USED	POWER UNIT	FEED TYPE
567041-1	M	854400-1	LEADMAKER	AIRFEED
567041-2	N	565435-5	BENCH MODEL K	AIRFEED
567041-3	M	843083-1	LEADMAKER	DOUBLE ACTING AIRFEED
567041-4	M	354500-1	BENCH MODEL G	AIRFEED
7-567041-7	L	-	SPARE TOOLING KIT	-

- △ RECOMMENDED SPARE PARTS.
- △ GREASE LIGHTLY.
- △ GUARD MUST BE IN PLACE WHEN OPERATING APPLICATOR IN A BENCH MACHINE.
- △ SEE DRAWING FOR COMPONENTS.
- △ TO CHECK CRIMP HEIGHT, CRIMP SOLDER (Ø.12 60/40 SOLID CORE) AND MEASURE AT CENTER OF SLUG.



- △ CUT TO LENGTH AT ASSEMBLY.
- △ ITEM 16 MUST BE REMOVED IF APPLICATOR IS REMOVED FROM LEADMAKER AND PLACED IN AMP-O-ELECTRIC* TERMINATING UNIT.
- △ ITEM 76 REQUIRED WHEN APPLICATOR IS REMOVED FROM LEADMAKER AND PLACED IN AMP-O-ELECTRIC* TERMINATING UNIT.
- △ INSTALL ITEM 75 IN CHIP RELIEF HOLE OF T-TERMINATOR UNIT BEFORE INSTALLING APPLICATOR.
- △ REMOVE WIRE FUNNEL WHEN USING THIS APPLICATOR ON AMPOMATOR* FEED SIDE T-TERMINATOR UNIT.
- △ IT MAY BE NECESSARY TO MODIFY THE T-TERMINATING UNIT'S BASE PLATE BEFORE INSTALLING THIS APPLICATOR BY ADDING A 10-32 HOLE TO RELOCATE THE FORWARD STOP AS SHOWN.



- △ FEED ADJUSTMENT MAY BE REQUIRED WHEN SWITCHING TERMINALS
- △ GROUP I: Ø.120 MAX INSULATION
GROUP II: Ø.200 MAX INSULATION.
- △ USE ITEMS 5 & 9 WITH GROUP I.
USE ITEMS 10 & 20 WITH GROUP II.
- △ AMPOMATOR* MODEL 48.
- △ LEADMAKER LM40 OR CS55.
- △ USE ITEM 46 WITH GROUP I.
USE ITEM 47 WITH GROUP II.
- △ ITEMS 75 AND 77 MUST BE INSTALLED IN THE G-TERMINATING UNIT CHIP RELIEF HOLE BEFORE INSTALLING THE APPLICATOR.
- △ ITEM NOT SHOWN.

TERMINAL NAME: FULLY INSULATED FASTON

GROUP I	GROUP II	AMP TERMINAL - AMP CRIMP SPECS			
520080	520306				
520083	520308	PAD LTR	CRIMP HEIGHT	WIRE SIZE	Ø SOLDER
520137	520310	A	.070±.002	18	Ø.125
520272	-	B	.065±.002	20 OR 22	Ø.125
521010	-	C	-	-	-
-	-	D	-	-	-
		CRIMP	SIZE	TYPE	RANGE
		WIRE	.176	D	22-18
		INSUL	-	-	△3

WIRE STRIP LENGTH	TERM APPL SPEC	FEED	APPL INSTRUCTIONS	SET UP GAGE	LAYOUT
.265-.291	114-2123	△3	408-8051	458637-1	L1040

-	1	1	1	1	-	4-21028-0	PIN, SLOTTED SPRING .094 X .750	121
-	3	3	3	3	-	21024-5	WASHER, SPRG LOCK, REG NO 10	117
-	4	4	4	4	-	21024-2	WASHER, SPRG LOCK, REG NO 4	114
-	1	1	1	1	-	21024-8	WASHER, SPRG LOCK, REG 3/8	112
-	4	4	4	4	-	21024-4	WASHER, SPRG LOCK, REG NO 8	111
-	1	1	1	1	-	22353-8	SCR, SHLD, SLOT HD, 3/16 DIA	105
-	1	1	1	1	-	21009-2	SCR, SET, SELF LOCKING 1/4-20 X .250	103
-	2	2	2	2	-	21017-2	SCREW, DRIVE	102
-	1	1	1	1	-	461264-1	PLATE, IDENTIFICATION	100
-	2	2	2	2	-	5-21006-6	SCR, SET, CUP POINT 10-32 X .750	99
-	1	1	1	1	-	22733-8	SCR, BHSC, SELF-LOCKING, 8-32 X .375	98
-	REF	REF	REF	REF	-	2-21002-9	SCR, BTN SKT HD CAP 10-32 X .750	97
-	REF	REF	REF	REF	-	2-22733-8	SCR, BHSC, SELF-LOCKING, 1/4-20 X .625	96
-	1	1	1	1	-	2-21002-7	SCR, BTN SKT HD CAP 10-32 X .500	95
-	4	4	4	4	-	2-21002-2	SCR, BTN SKT HD CAP 8-32 X .500	94
-	-	2	-	2	-	1-21002-7	SCR, BTN SKT HD CAP 6-32 X .375	92
-	2	2	2	2	-	1-21002-3	SCR, BTN SKT HD CAP 4-40 X .250	91
-	2	2	2	2	-	2-21000-9	SCR, SKT HD CAP 8-32 X .750	87
-	1	1	1	1	-	2-22603-1	SCREW, MACH, HEX HD, 8-32 X .375	86
-	4	6	4	6	-	1-21000-4	SCR, SKT HD CAP 4-40 X .375	85
-	1	1	1	1	-	2-21000-7	SCR, SKT HD CAP 8-32 X .500	84
-	1	1	1	1	-	3-21000-4	SCR, SKT HD CAP 10-32 X .375	81
-	-	1	-	1	-	1-18023-1	SCR, SHC, M4x10	80
-	-	-	1	-	-	462992-7	GUARD ASSEMBLY	79
-	REF	-	-	-	..	679532-1	INSERT, GUARD	78
-	-	1	-	1	..	189728-1	BRACKET, SPACER	77
-	REF	REF	-	REF	..	803931-1	BRACKET, HOLD DOWN	76
-	-	1	-	1	..	568681-1	SPACER, BASE PLATE	75
-	1	1	1	1	-	690603-1	SPRING ASSIST AMP-O-MATOR APPLICATOR	74
-	1	1	1	1	-	23030-1	SCR, SKT HD CAP, S-LOCK, 6-32 X .25	73
-	1	1	1	1	-	3-21001-5	SCR, SKT HD CAP 3/8-16 X 1.000	72
-	1	1	1	1	-	459610-3	MOUNT, FEED BRACKET	71
-	-	-	1	-	-	692655-5	AIR FEED VALVE ASSEMBLY	69
-	-	-	1	-	-	461065-4	AIR FEED ASSY	68
-	-	-	REF	-	-	24042-2	VALVE, SHUT-OFF	67
-	-	-	REF	-	-	692655-6	AIR FEED VALVE ASSEMBY	66
-	1	-	1	1	-	461065-1	ASSEMBLY, AIR FEED	65

LOC	QTY	DESCRIPTION	DATE	BY	REV
A	66	SCR, SKT HD CAP 10-32 X 1.000	21FEB2007	BW	TM
		ELBOW, MALE, PNEUMATIC PUSH-TO-CONNECT/RELEASE	08AUG2012	MY	TE
		INSERT, COUPLING	14AUG2012	MY	TE
		TUBING, POLY-FLO, NATURAL			
		VALVE, QUICK EXHAUST			
		CAP, RAM			
		HOUSING, APPL CSTG			
		NIPPLE, HEX, PIPE FITTING			
		FINGER, FEED			
		FEED FINGER ASSEMBLY			
		APPLICATOR, BASIC SUBASSEMBLY			
		APPLICATOR, BASIC SUBASSEMBLY			
		PLATE, REAR SHEAR			
		HOLDER, SHEAR			
		SUPPORT, INSULATION			
		SUPPORT, INSULATION			
		PLUG, NYLON			
		RAM, SIDE FEED			
		SHIM SUB-ASSY			
		WASHER, RAM (.115)			
		CRIMPER, BOLT SPECIAL			
		BALL, STEEL			
		SPRING, COMPRESSION			
		DISC, SPRING			
		WIRE DISC			
		SPRING, COMPRESSION			
		POST, RAM			
		PLATE, BASE			
		PLATE, BASE			
		ADJUSTMENT SCREW			
		WASHER, WAVE SPRING			
		BLOCK, STRIP GUIDE ADJUST			
		PLATE, STRIP GUIDE			
		SPRING, COMPRESSION			
		LEVER, DRAG RELEASE			
		DRAG, TERMINAL			
		FRONT STRIP GUIDE			
		GUIDE, STRIP, FRONT			
		SPRING, COMPRESSION			
		FUNNEL, WIRE			
		STRIPPER			
		HOLD DOWN, TERMINAL			
		GUIDE, CARRIER SCRAP			
		PLATE, REAR SHEAR			
		HOLDER, SHEAR, REAR			
		REAR FLOATING SHEAR			
		SPRING, COMPRESSION			
		STOP, SHEAR			
		TERMINAL SUPPORT			
		TERMINAL SUPPORT			
		ANVIL, SAND-BLASTED 22-18			
		SPACER			
		DEPRESSOR SHEAR, REAR			
		WIRE FUNNEL			
		BLOCK, FL CRIMPER SPACER			
		STABILIZER			
		SPACER			
		CRIMPER, SEMI-FLAT 22-18			

TRADEMARK - *

THIS DRAWING IS A CONTROLLED DOCUMENT. DIMENSIONING AND TOLERANCING PER ASME Y14.5M-2009.

DIMENSIONS: IN TOLERANCES UNLESS OTHERWISE SPECIFIED:

0 PLC	±
1 PLC	±
2 PLC	±
3 PLC	±
4 PLC	±

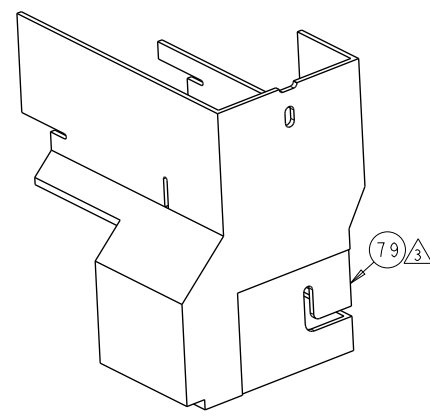
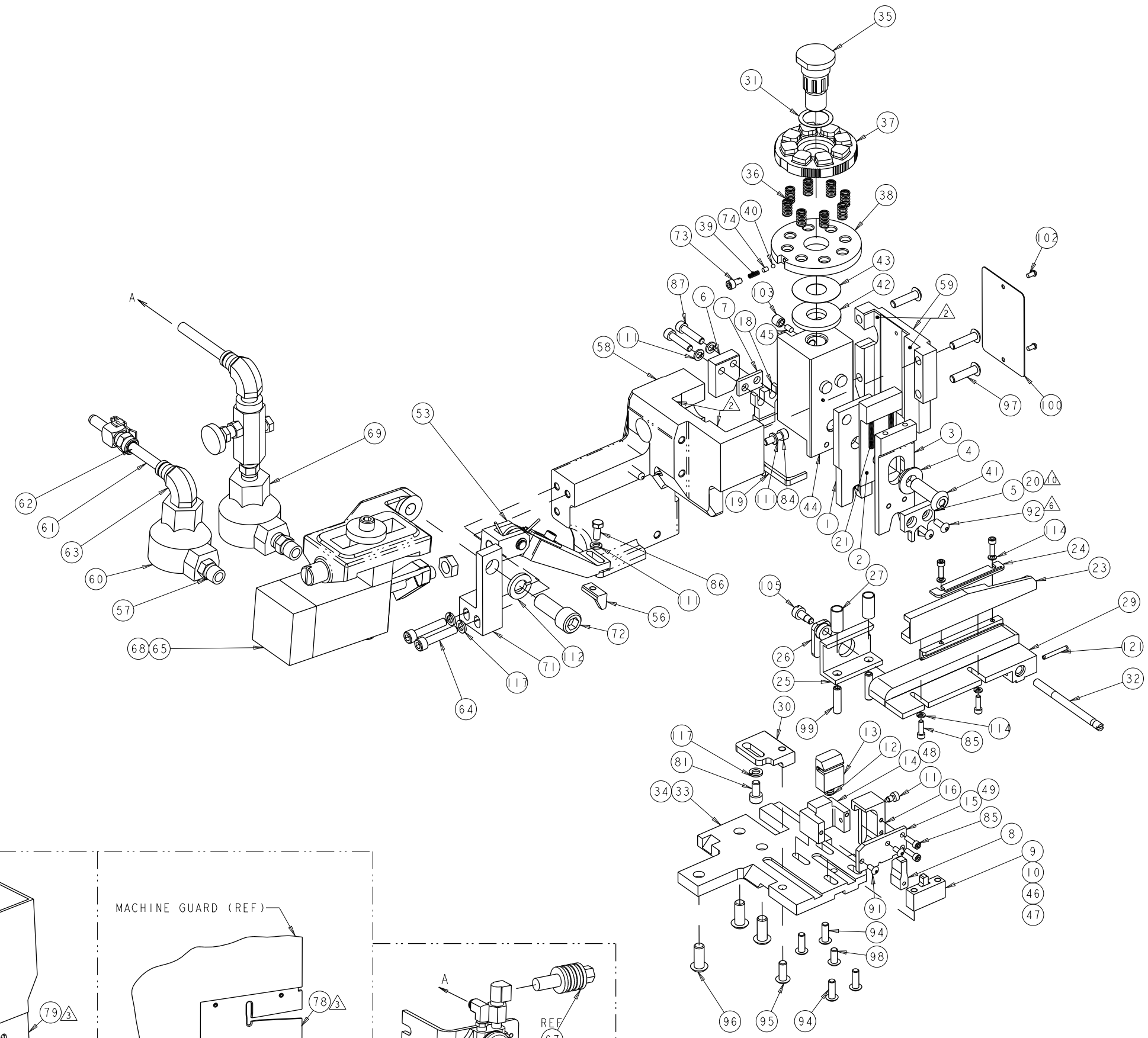
APPROVED: B. WEAVER 23JAN2007, T. ELBIN 23JAN2007, T. ELBIN 23JAN2007

PRODUCT SPEC: - APPLICATION SPEC: -

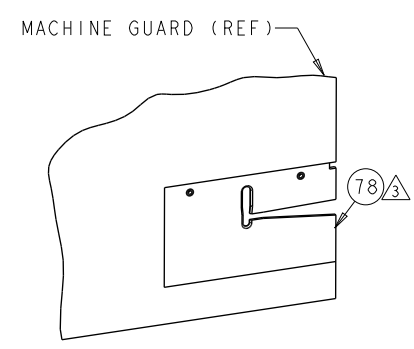
SIZE: A1 CAGE CODE: 00779 DRAWING NO: C=567041

Customer Drawing SCALE: 1:2 SHEET: 1 OF 2 REV: N3

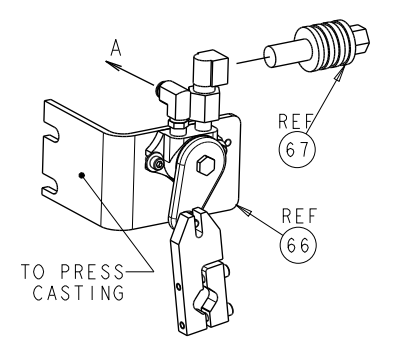
LOC		DIST		REVISIONS			
P	LYR	DESCRIPTION	DATE	OWN	APVD		
A	66	SEE SHEET 1					



AMP-O-LECTRIC* K TERMINATOR GUARD



MACHINE GUARD (REF)
G TERMINATOR GUARD



TO PRESS CASTING
REF 67
REF 66

THIS DRAWING IS A CONTROLLED DOCUMENT. DIMENSIONING AND TOLERANCING PER ASME Y14.5M-2009		OWN: B. WEAVER 23JAN2007	TE Connectivity
DIMENSIONS: IN		CHK: T. ELBIN 23JAN2007	
TOLERANCES UNLESS OTHERWISE SPECIFIED:		APVD: T. ELBIN 23JAN2007	NAME: SIDE FEED HDM APPLICATOR
0 PLC ±	1 PLC ±	PRODUCT SPEC	
2 PLC ±	3 PLC ±	APPLICATION SPEC	
4 PLC ±	ANGLES ±	REIGHT	
MATERIAL:		FINISH:	SIZE: A1
			CAGE CODE: 00779
			DRAWING NO: C=567041
			RESTRICTED TO: N3
		Customer Drawing	SCALE: 3:4 SHEET 2 OF 2 REV: N3