

AVS Adaptor Board for USB AVS System Mainboards

National Semiconductor
Application Note 2070
Michael Drake
August 4, 2010



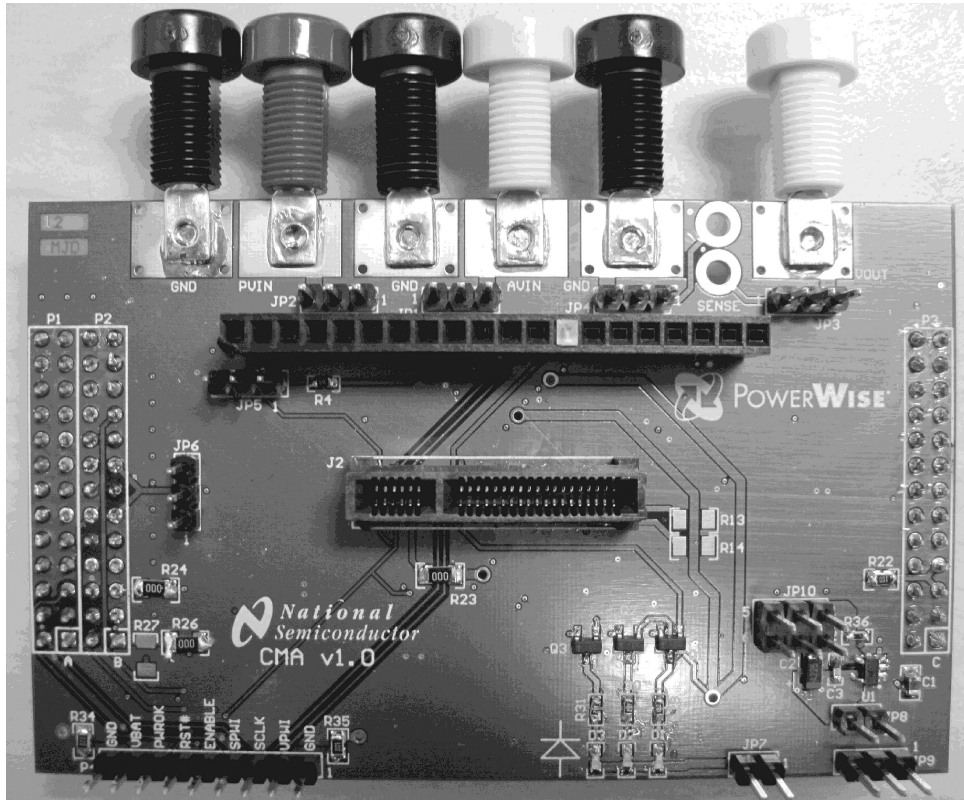
AVS Adaptor Board for USB AVS System Mainboards

The AVS Adaptor Board (AAB) is not intended for standalone use, but rather to enable interconnect of non-PEK/SPEK footprint daughterboards to National's PowerWise/SPMI System Mainboards. The AAB provides a means to plug in National evaluation boards with the modified DOSA style connector, the proprietary MAK style connector, or the standard 1x9 SIP interface. The AAB provides various power supply options for bench evaluation, and several jumper options to support the desired setup.

Evaluation Board Overview

The AAB is, for the most part, a passive board. The vast majority of its functionality is to appropriately route power and

signals from the system mainboard and/or bench equipment to the DUT. The only active circuitry on the board is a low-power LDO which can be used to provide the PWI/SPMI I/O signaling voltage. Because of the flexibility designed into the board, the user must be very careful with the jumper set-up of the board stack to ensure no damage is done to any of the circuitry. While it would be impossible to cover all combinations of board stacks, great effort will be taken to provide a method/procedure to ensure that the boards can be configured without damaging anything.



30127001

FIGURE 1. AVS Adaptor Board

LM10000 Evaluation Board Quick Start

A typical set up using AAB requires a National Semiconductor AVS System Mainboard, the AAB, and a compliant evaluation board to make up the board stack. The board is driven from a PC with a GUI that is tailored to the evaluation board and DUT. The system mainboard connects to the PC via USB. The board stack can be entirely standalone and powered from USB for quick evaluation/demo purposes, or can be powered from a bench supply for more thorough testing of the regulator (s).

BASIC SETUP

1. Set the appropriate jumpers for power supply on the chosen system board. Details of the supply can be found in the documentation for that National system board.

2. Plug the AAB into the system board..
3. Set the jumpers on the AAB per the following tables.
4. Plug the DUT board into the AAB.
5. Follow the associated documentation for the device you are working with as to power up sequence and special GUI considerations. As a general rule though, you want any external/bench supplies to be on prior to plugging in the USB cable.
6. Plug in the USB cable of the National system board and follow the documentation pertaining to that device and GUI.

There are many jumper options on the AAB to allow it to perform in as many roles as possible. Great care must be taken in setting up the jumpers prior to applying power to avoid damaging the boards in the board stack. The jumpers and their purpose is explained here:

Jumper	Purpose	Note
JP1	Selects the power source for AVIN. AVIN is typically used to power the power supply's control electronics.	1-2: AVIN is supplied via the system mainboard's "VBAT" input; DEFAULT.
		2-3: AVIN is supplied via the YELLOW banana jack on the AAB.
JP2	Selects the power source for PVIN. PVIN is typically used to power the power electronics of the power supply.	1-2: PVIN is supplied via the system mainboard's "VBAT" input; DEFAULT.
		2-3: PVIN is supplied via the RED banana jack on the AAB.
JP3 (+Sense) and JP4 (-Sense)	Selects either local feedback for the sense lines or remote sense.	1-2: The regulated sense point will be based on the remote sense points labeled "Sense" in the silkscreen.
		2-3: The regulated sense point for the supply will occur at the WHITE banana jack; DEFAULT.
JP5	ENABLE pull-up/pull-down strap.	1-2: ENABLE is pulled-up to AVIN via 10K.
		2-3: ENABLE is pulled-down to GND via 10K.
JP6	Selects the PWI/SPMI sideband (signals other than the 2-wire data and clock) I/O level reference.	1-2: Referenced to the "VBAT" supply from the system board; depends on what that supply is set to.
		2-3: Referenced to the same voltage as the PWI/SPMI signals, "VPWI"; DEFAULT.
JP7	LED supply On/Off. The LEDs are powered from the system board "VBAT".	On: With the jumper installed, the LED indicators will be functional; DEFAULT.
		Off: LEDs are disabled.
JP8	Short out on-board "VPWI" regulator.	On: U1, the "VPWI" LDO will be shorted. This will make "VPWI" equal to the system board "VBAT".
		Off: "VPWI" can be generated on-board or elsewhere; DEFAULT.
JP9	"VPWI" regulator On/Off.	1-2: "VPWI" LDO is enabled; DEFAULT.
		2-3: "VPWI" LDO is disabled.
JP10	"VPWI" regulator output voltage selection.	1-2: 3.3V; DEFAULT.
		3-4: 2.5V.
		5-6: 1.8V.

INTERCONNECTS

There are several ways to connect to/from the AAB board. The board will nearly always be paired with a system mainboard that will connect via P1, P2, and P3. These are male pin headers on the bottom side of the board that allow the board to plug down into the standard mainboard footprint. The AAB itself then breaks out the required power and signal traces to the appropriate locations on the interconnects.

J1 is the modified DOSA-style interconnect. It leverages the DOSA Standard for Non-Isolated 9.6 – 14.4VIN, 15/16/20A DC/DC Converters. It is completely backwards compatible with existing DOSA style parts, but expands upon the connector footprint to add in PWI/SPMI functionality. The pinout is in the below table:

DOSA Pin Number	AAB Pin Number	Function
1	1	VOUT
2	2	VOUT
3	3	SENSE
4	4	VOUT
5	5	GND
	6	GND
	7	GND
	<<KEY>>	Mechanical Key
	8	SCLK
	9	SPWI
	10	VPWI
	11	AVIN
	12	PGOOD
A	13	I Share - Not Routed
6	14	GND
7	15	VIN
8	16	VIN
B	17	SEQ - Not Routed
9	18	TRIM - Not Routed
10	19	ON/OFF

J2 is the “MAK” connector that is utilized to connect to a few National DUT boards. It is a vertical edge-card socket strip. Its use is relegated to a couple of very specific applications and will not be detailed here. The user is urged to reference the schematics and the DUT documentation for further details.

The last major connector is P4. This 1x9 SIP connector has been on the vast majority of National AVS products for several

years. It allows a convenient means to access most of the major signals involved in the PWI/SPMI interface, and can also be used to cable across to an external AVS setup to provide the proper signaling environment. The P4 pinout is found in the following table:

Pin Number	Function	Description
1	GND	System ground
2	VPWI	VPWI voltage
3	SCLK	Serial clock
4	SPWI	Serial data
5	ENABLE	Regulator enable
6	RST#	Regulator reset (active low)
7	PWROK	Regulator output of power okay indicator
8	VBAT	Mainboard “VBAT” voltage
9	GND	System ground

INDICATOR LEDS

When JP7 is ON and the indicator LEDs are enabled, they have the following functionality:

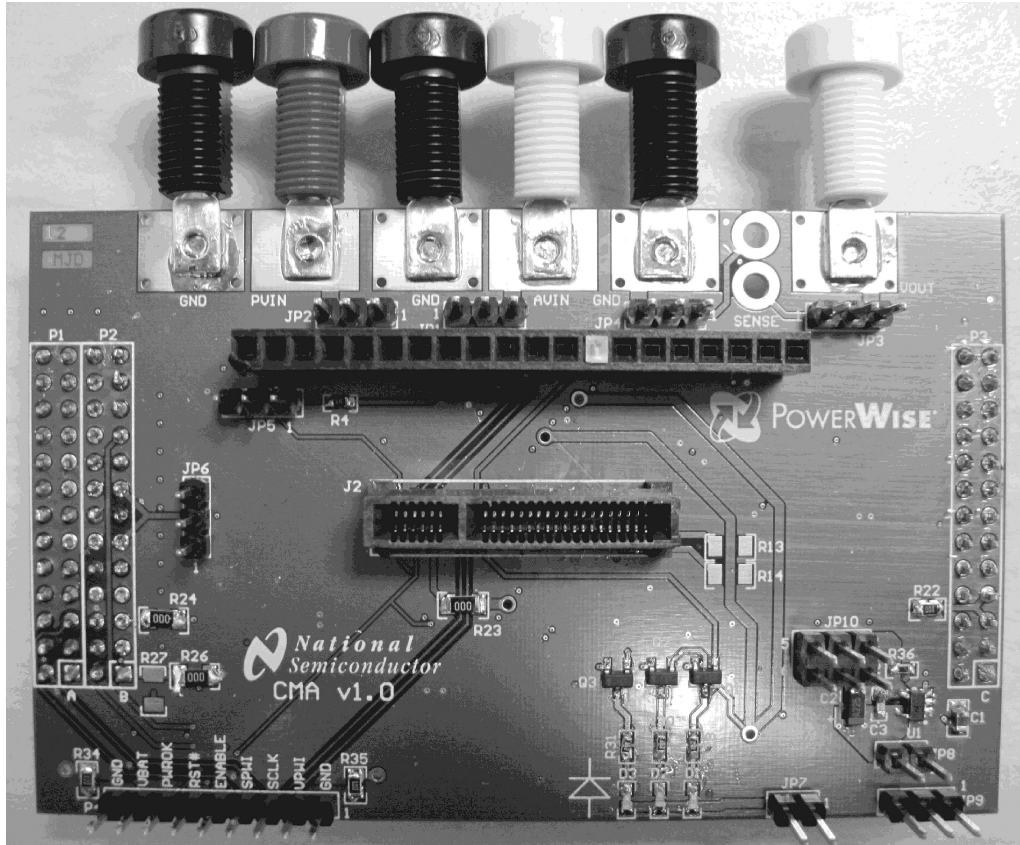
Ref Des	Color	Description
D1	Red	AVIN is powered up
D2	Yellow	VPWI is powered up
D3	Green	The PWROK signal is driven high

1. R26 and R27 can be used either as a voltage divider for the output voltage or as a RC for the ADC converter on the system mainboard. By default, R26 is shorted and R27 is open, but the user can mount these as desired. The user must ensure that the VOUT fed back to the mainboard does NOT exceed 3.3V for the USB Interface Board or 1.8V for the PEK/SPEK. VOUTs above this should be divided down to appropriate levels.
2. If "VPWI" is provided externally by the user in some fashion, care should be taken to disable U1 (set JP9 to 2-3) and open JP8. Additionally, the user should make sure that the provided "VPWI" does NOT exceed the mainboard "VBAT" by more than 1 diode drop or current may flow from "VPWI" to "VBAT". "VBAT" is dependent upon the system board used and the settings applied to it.

Bill of Materials

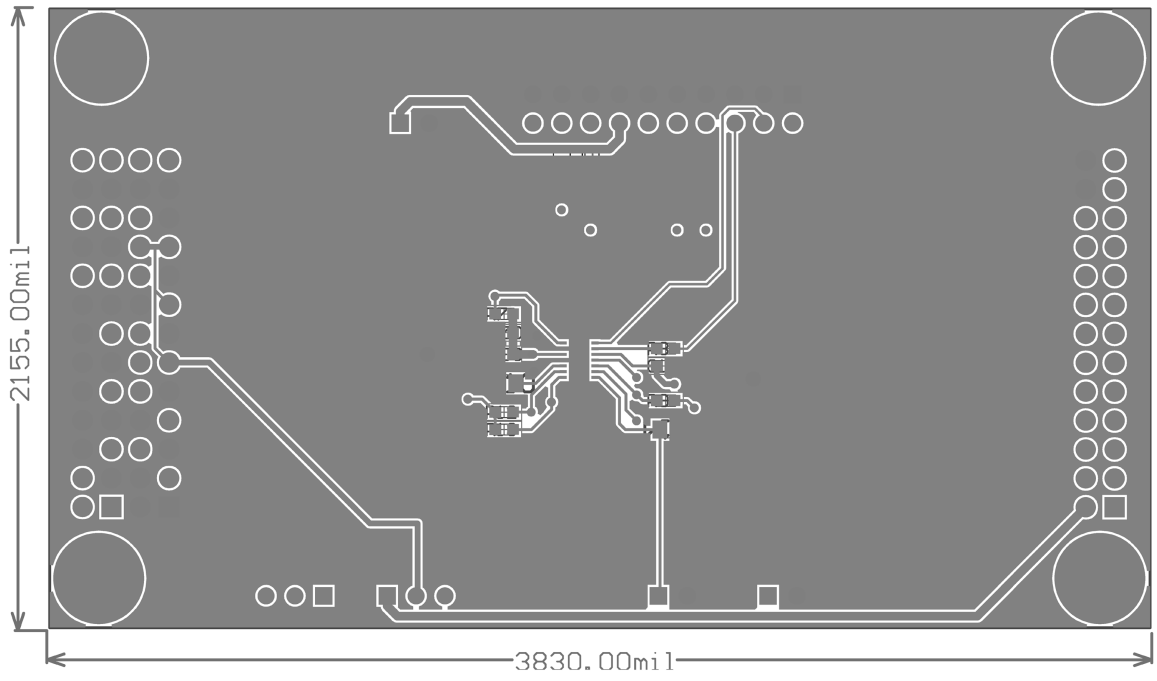
Designator	Value	Description	Qty.	Mfg. P/N
AVIN	Yellow Banana Jack	Yellow Nylon Banana Jack	1	Emerson 108-0907-001
C1	1 μ F/35V/X7R	VPWI C _{IN}	1	T-Y GMK212B7105KG-T
C2	2.2 μ F/10V/20%/Tant	VPWI C _{OUT}	1	Nichicon F931A225MAA
C3	7pF/50V/C0G	VPWI Feedback Bypass	1	TDK C1608C0G1H070D
D1	LS L29K-H1J2-1-Z	Red LED for AVIN Indicator	1	OSRAM LS L29K-H1J2-1-Z
D2	LY L29K-J1K2-26-Z	Yellow LED for VPWI Indicator	1	OSRAM LY L29K-J1K2-26-Z
D3	LG L29K-G2J1-24-Z	Green LED for PGOOD Indicator	1	OSRAM LG L29K-G2J1-24-Z
GND, GND2, GND3	Black Banana Jack	Black Nylon Banana Jack	3	Emerson 108-0903-001
J1	DOSA Receptacle	1x20 100-mil Receptacle	1	Tyco 6-534237-8
J1-Key	DOSA Receptacle Key	Key to make pin 8 inaccessible	1	Tyco 86286-1
J2	Samtec HSEC8	MAK Connector Receptacle	1	Samtec HSEC8-125-01-S-DV-A
JP1, JP2, JP3, JP4, JP5, JP6, JP9	1x3, 100-mil Header	1x3 100-mil Jumper	7	Molex 90120-0763
JP7, JP8	1x2, 100-mil Header	1x2 100-mil Jumper	2	Molex 90120-0762
JP10	2x3, 100-mil Header	VPWI Voltage Select Jumper	1	Molex 90131-0763
P1, P2, P3	A28694-ND	Baseboard Connectors	3	Tyco 1-87227-3
P4	1x9, 100-mil Header	1x9 PWI Access Header	1	Molex 90120-0769
PVIN	Red Banana Jack	Red Nylon Banana Jack	1	Emerson 108-0902-001
Q1, Q2, Q3	NDS331N	Logic NFET	3	Fairchild NDS331N
R1, R22, R34, R35	10R/0.25W/5%	Fuse Rs	4	Rohm ESR10EZPJ100
R2, R3	1.5K/0.1W/1%	Presence Detect Rs	2	Rohm MCR03EZPFX1501
R4, R9	10K/0.1W/1%	ENABLE P-U/P-D	2	Stackpole RMCF 1/16 10K 1% R
R5, R6, R7, R8, R10, R11, R12, R15, R16, R17, R18, R19, R20, R21, R23, R24, R25, R26	0R/0.25W	Pad shorts	18	Vishay CRCW12060000Z0EA
R13, R14, R27	No Load	Open pads	3	N/A
R28	53.6K/0.1W/1%	2.5V VPWI Divider R	1	Panasonic ERJ-3EKF5362V
R29, R30, R31	1.6K/0.1W/1%	LED Current Limit R	3	Yageo RC0603FR-071K6L
R32	86.6K/0.1W/1%	3.3V VPWI Divider R	1	Panasonic ERJ-3EKF8662V
R33	24.0K/0.1W/1%	1.8V VPWI Divider R	1	Panasonic ERJ-3EKF2402V
R36	51.1K/0.1W/1%	LS VPWI Divider R	1	Panasonic ERJ-3EKF5112V
TP1, TP2	No Load	Remote Sense pads	2	N/A
U1	LP2980IM5-ADJ	VPWI Adjust LDO	1	National Semi LP2980IM5-ADJ
VOUT	White Banana Jack	White Nylon Banana Jack	1	Emerson 108-0901-001
Jumper Shunts -- Installed Per Golden Sample	1x2 Shunt	Jumper	9	Sullins SPC02SYAN

Layout Artwork



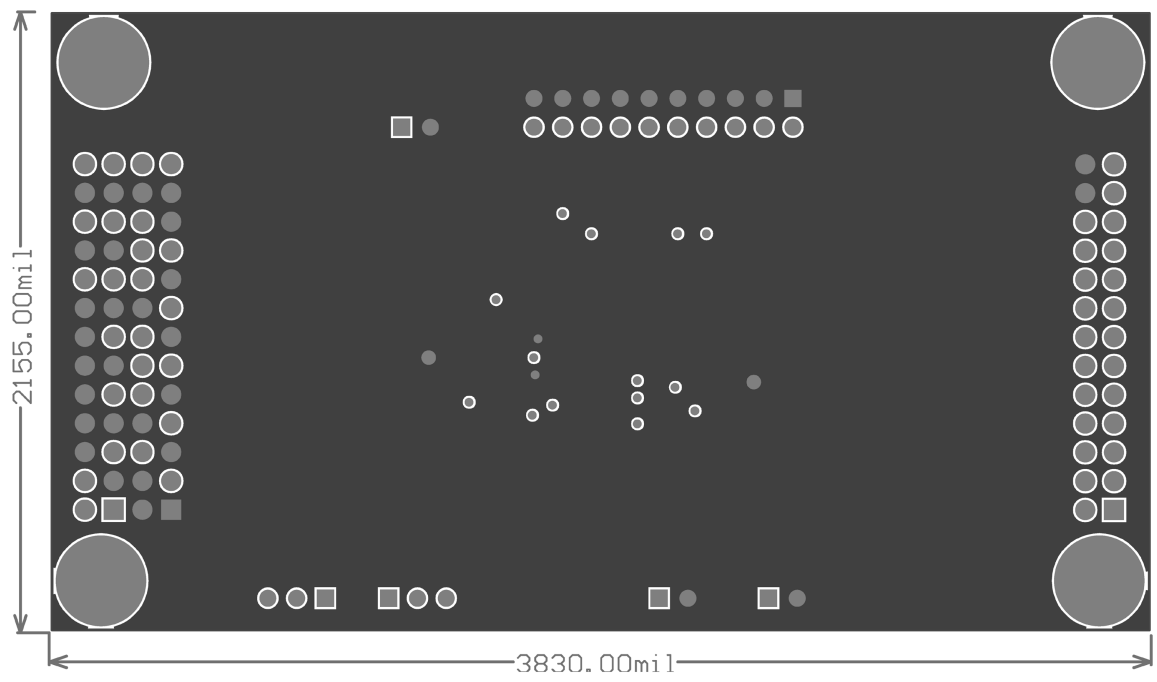
30127001

FIGURE 2. Evaluation Board (Top View)



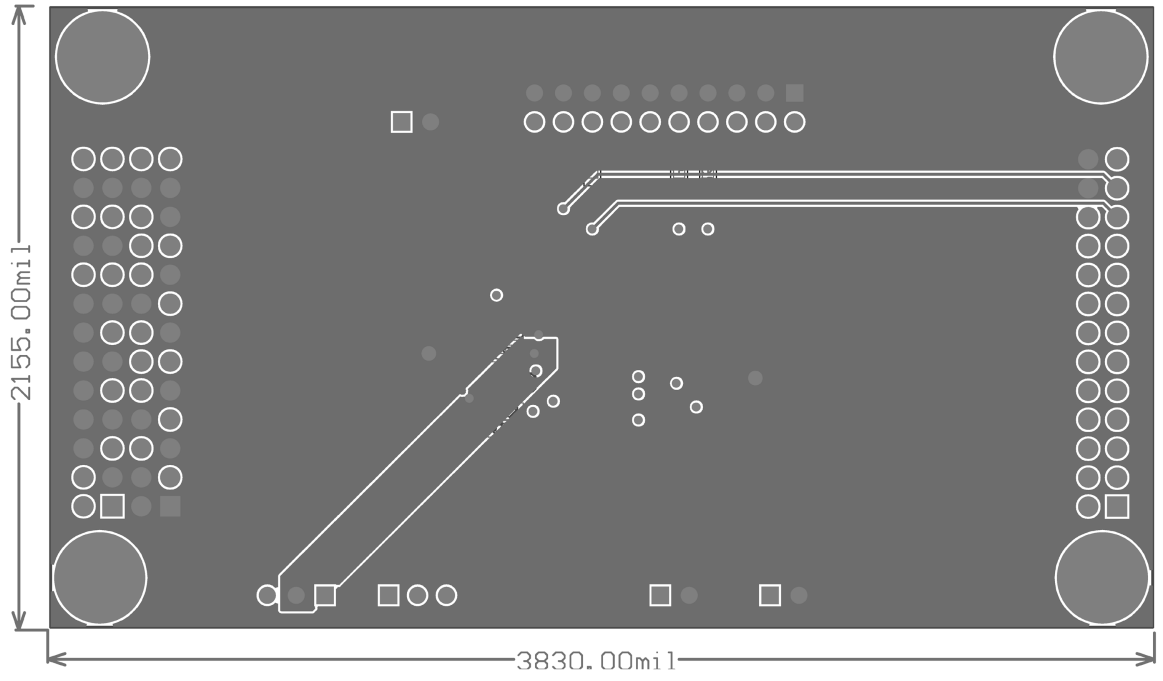
30127009

FIGURE 3. Top Layer



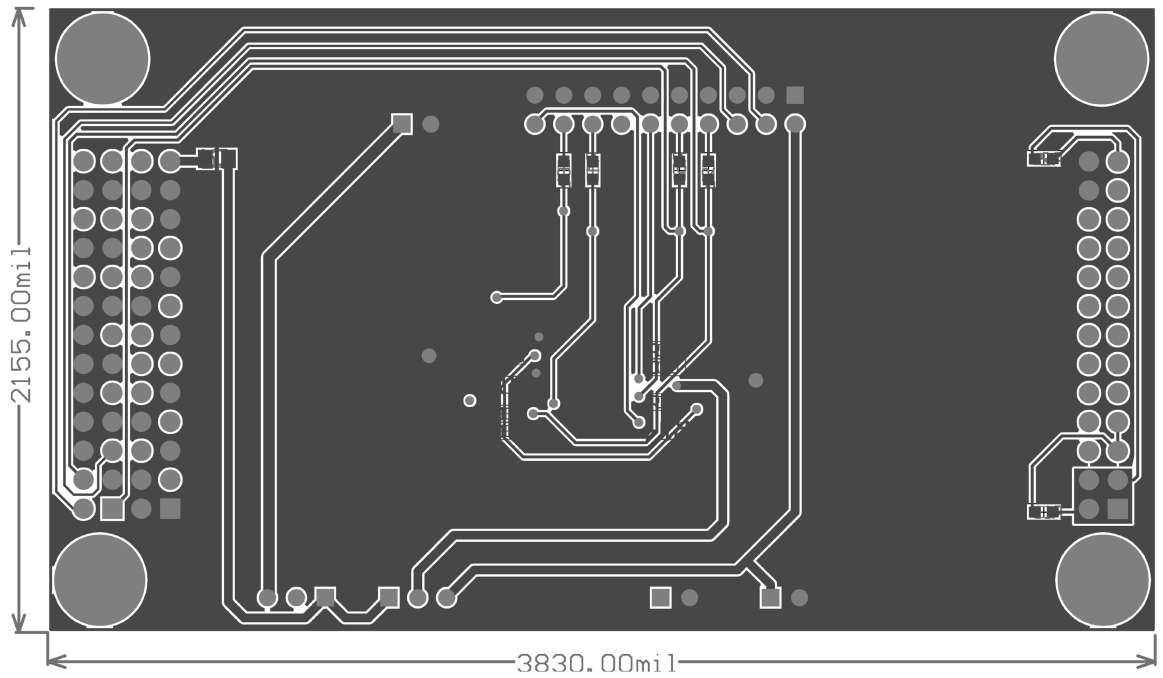
30127010

FIGURE 4. Mid-Layer 1



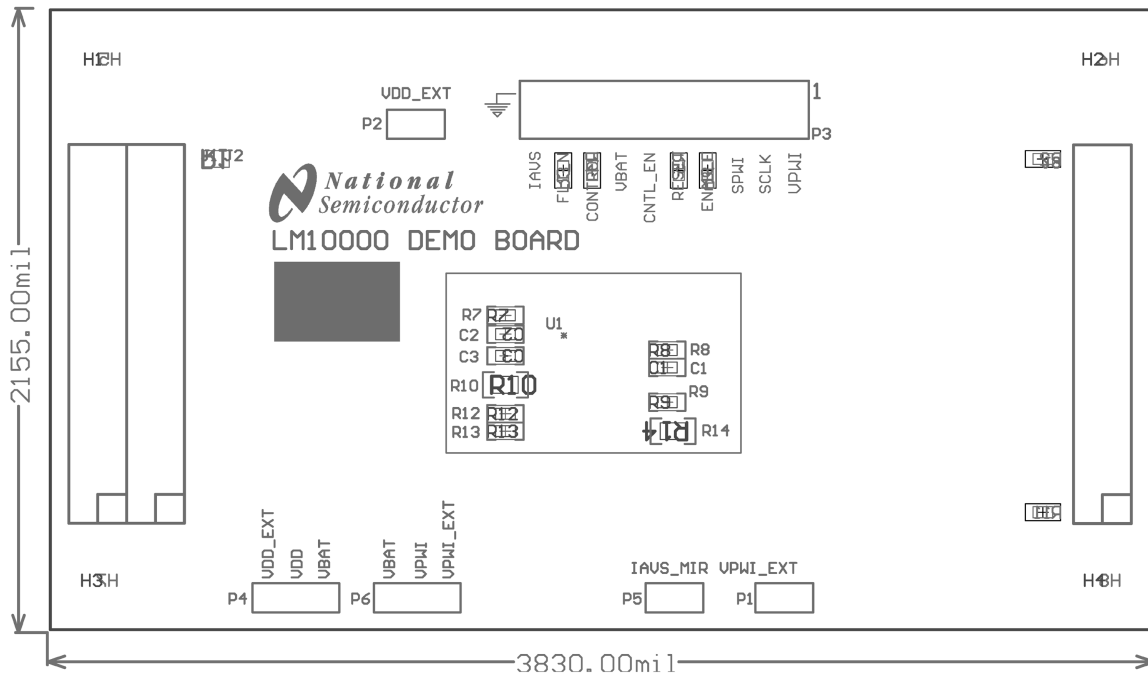
30127011

FIGURE 5. Mid-Layer 2



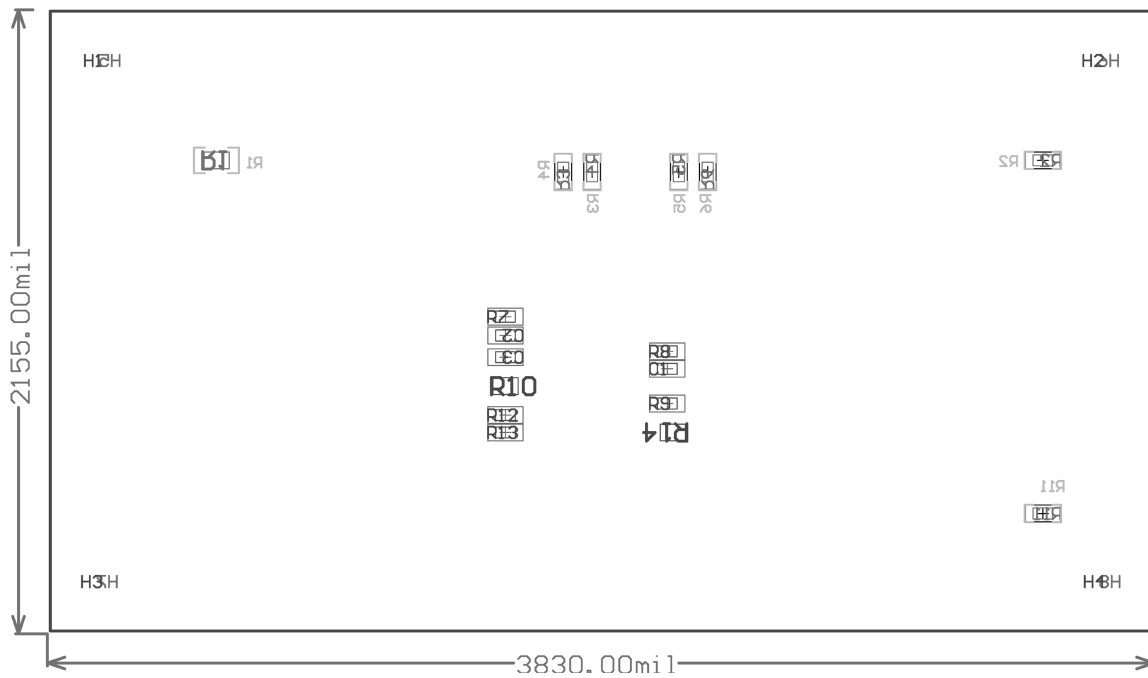
30127012

FIGURE 6. Bottom Layer



30127002

FIGURE 7. Top Silk Screen



30127013

FIGURE 8. Bottom Silk Screen

Notes

For more National Semiconductor product information and proven design tools, visit the following Web sites at:
www.national.com

Products		Design Support	
Amplifiers	www.national.com/amplifiers	WEBENCH® Tools	www.national.com/webench
Audio	www.national.com/audio	App Notes	www.national.com/appnotes
Clock and Timing	www.national.com/timing	Reference Designs	www.national.com/refdesigns
Data Converters	www.national.com/adc	Samples	www.national.com/samples
Interface	www.national.com/interface	Eval Boards	www.national.com/evalboards
LVDS	www.national.com/lvds	Packaging	www.national.com/packaging
Power Management	www.national.com/power	Green Compliance	www.national.com/quality/green
Switching Regulators	www.national.com/switchers	Distributors	www.national.com/contacts
LDOs	www.national.com/ldo	Quality and Reliability	www.national.com/quality
LED Lighting	www.national.com/led	Feedback/Support	www.national.com/feedback
Voltage References	www.national.com/vref	Design Made Easy	www.national.com/easy
PowerWise® Solutions	www.national.com/powerwise	Applications & Markets	www.national.com/solutions
Serial Digital Interface (SDI)	www.national.com/sdi	Mil/Aero	www.national.com/milaero
Temperature Sensors	www.national.com/tempensors	SolarMagic™	www.national.com/solarmagic
PLL/VCO	www.national.com/wireless	PowerWise® Design University	www.national.com/training

THE CONTENTS OF THIS DOCUMENT ARE PROVIDED IN CONNECTION WITH NATIONAL SEMICONDUCTOR CORPORATION ("NATIONAL") PRODUCTS. NATIONAL MAKES NO REPRESENTATIONS OR WARRANTIES WITH RESPECT TO THE ACCURACY OR COMPLETENESS OF THE CONTENTS OF THIS PUBLICATION AND RESERVES THE RIGHT TO MAKE CHANGES TO SPECIFICATIONS AND PRODUCT DESCRIPTIONS AT ANY TIME WITHOUT NOTICE. NO LICENSE, WHETHER EXPRESS, IMPLIED, ARISING BY ESTOPPEL OR OTHERWISE, TO ANY INTELLECTUAL PROPERTY RIGHTS IS GRANTED BY THIS DOCUMENT.

TESTING AND OTHER QUALITY CONTROLS ARE USED TO THE EXTENT NATIONAL DEEMS NECESSARY TO SUPPORT NATIONAL'S PRODUCT WARRANTY. EXCEPT WHERE MANDATED BY GOVERNMENT REQUIREMENTS, TESTING OF ALL PARAMETERS OF EACH PRODUCT IS NOT NECESSARILY PERFORMED. NATIONAL ASSUMES NO LIABILITY FOR APPLICATIONS ASSISTANCE OR BUYER PRODUCT DESIGN. BUYERS ARE RESPONSIBLE FOR THEIR PRODUCTS AND APPLICATIONS USING NATIONAL COMPONENTS. PRIOR TO USING OR DISTRIBUTING ANY PRODUCTS THAT INCLUDE NATIONAL COMPONENTS, BUYERS SHOULD PROVIDE ADEQUATE DESIGN, TESTING AND OPERATING SAFEGUARDS.

EXCEPT AS PROVIDED IN NATIONAL'S TERMS AND CONDITIONS OF SALE FOR SUCH PRODUCTS, NATIONAL ASSUMES NO LIABILITY WHATSOEVER, AND NATIONAL DISCLAIMS ANY EXPRESS OR IMPLIED WARRANTY RELATING TO THE SALE AND/OR USE OF NATIONAL PRODUCTS INCLUDING LIABILITY OR WARRANTIES RELATING TO FITNESS FOR A PARTICULAR PURPOSE, MERCHANTABILITY, OR INFRINGEMENT OF ANY PATENT, COPYRIGHT OR OTHER INTELLECTUAL PROPERTY RIGHT.

LIFE SUPPORT POLICY

NATIONAL'S PRODUCTS ARE NOT AUTHORIZED FOR USE AS CRITICAL COMPONENTS IN LIFE SUPPORT DEVICES OR SYSTEMS WITHOUT THE EXPRESS PRIOR WRITTEN APPROVAL OF THE CHIEF EXECUTIVE OFFICER AND GENERAL COUNSEL OF NATIONAL SEMICONDUCTOR CORPORATION. As used herein:

Life support devices or systems are devices which (a) are intended for surgical implant into the body, or (b) support or sustain life and whose failure to perform when properly used in accordance with instructions for use provided in the labeling can be reasonably expected to result in a significant injury to the user. A critical component is any component in a life support device or system whose failure to perform can be reasonably expected to cause the failure of the life support device or system or to affect its safety or effectiveness.

National Semiconductor and the National Semiconductor logo are registered trademarks of National Semiconductor Corporation. All other brand or product names may be trademarks or registered trademarks of their respective holders.

Copyright© 2010 National Semiconductor Corporation

For the most current product information visit us at www.national.com



National Semiconductor Americas Technical Support Center
 Email: support@nsc.com
 Tel: 1-800-272-9959

National Semiconductor Europe Technical Support Center
 Email: europe.support@nsc.com

National Semiconductor Asia Pacific Technical Support Center
 Email: ap.support@nsc.com

National Semiconductor Japan Technical Support Center
 Email: jpn.feedback@nsc.com